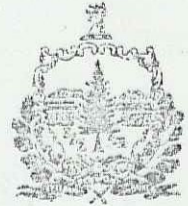


INDEX OF SHEETS

- 1. TITLE
- 2. SUMMARY AND DRAINAGE
- 3. PLAN AND TYPICAL SECTION
- 4. D-6 REINFORCED CONCRETE DRAINILET WITH GRATE (DITCHES) 4/2/73 R
- 5. C-1 PRECAST CEMENT CONCRETE CURB 5/30/73 R
- 6. D-2 HEADWALLS AND UNDERDRAIN 3/5/72 R
- 7. D-4 UNDERDRAIN FLUSHING BASIN 7/24/73 R
- 8. D-8 REINFORCED CONCRETE DROP INLET 12/5/71
- 9. D-4 GRATES 4/25/73 R
- 10. C-8 ON PROJECT CONSTRUCTION SIGNS 5/14/71 R
- 11. P.22 CROSS SECTIONS
- 12. DITCH PROFILE - R1 (VT 100)
- 13. CONTRACTOR - STATE OF VERMONT DISTRICT 6 CONSTRUCTION BEGAN - 19 MAY 1977
CONSTRUCTION COMPLETED - 25 JULY 1977 ACCEPTED - 2 AUGUST 1977
RESIDENT ENGINEER - CARL R. QUESNEL RECORD PLANS - PAUL E. SINGLETON
GRAVEL - MANOSH PIT, MORRISTOWN, VT.
BITUMINOUS CONCRETE PAVEMENT - COOLEY ASPHALT PAVING CORP., BARRE, VT.
CONCRETE - HUTCH MATERIAL SUPPLY CORP., MONTPELIER, VT.
REINFORCING STEEL - U.S. STEEL CORP., BOSTON, MASS.
AGGREGATE - NORTHEASTERN CULVERT CORP., WESTMINSTER, VT.
CAST IRON GRATES WITH FRAMES - L.E. LEBARRON FOUNDRY CO., BROCKTON, MASS.
CAST IN PLACE CONCRETE CURB - WRIGHT FARMS CONSTRUCTION INC., WILLISTON, VT.
SEED & FERTILIZER - OLD FOX CHEMICAL INC., BRANDON, VT.
AGRICULTURAL LIMESTONE - VERMAG, PROCTOR, VT.
TOPSOIL - MANOSH PIT, MORRISTOWN, VT.

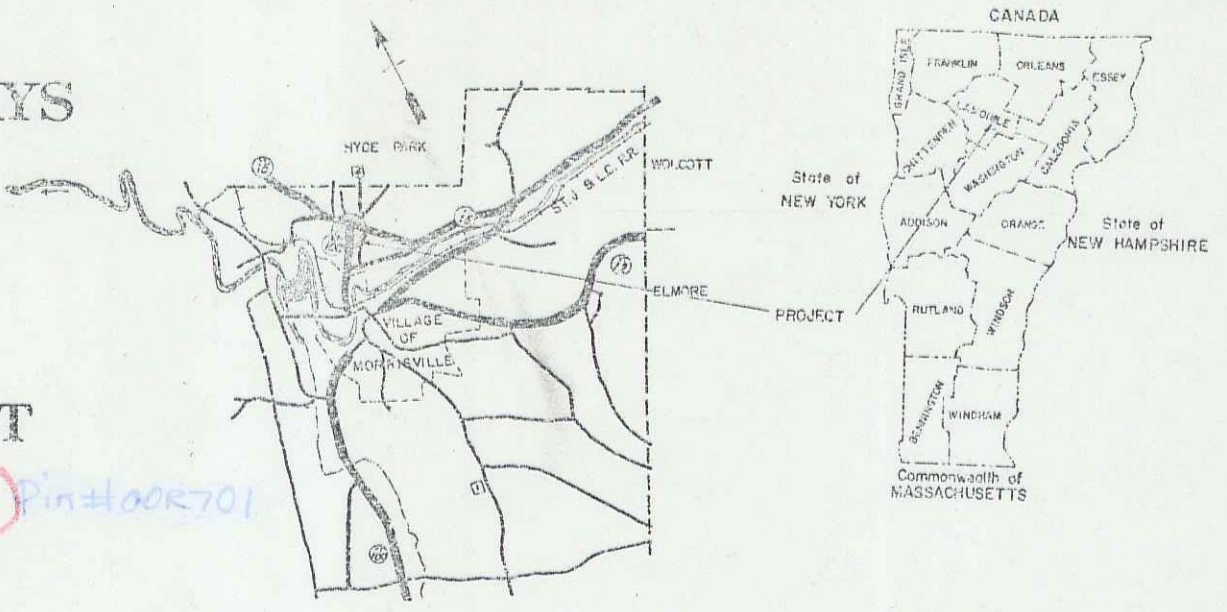
NOTE: ANY QUANTITIES, DIMENSIONS OR OTHER DETAILS RELATIVE TO THIS PROJECT MAY BE FOUND IN EITHER THE FIELD BOOK OR THE ESTIMATE FILE.

STATE OF VERMONT
DEPARTMENT OF HIGHWAYS

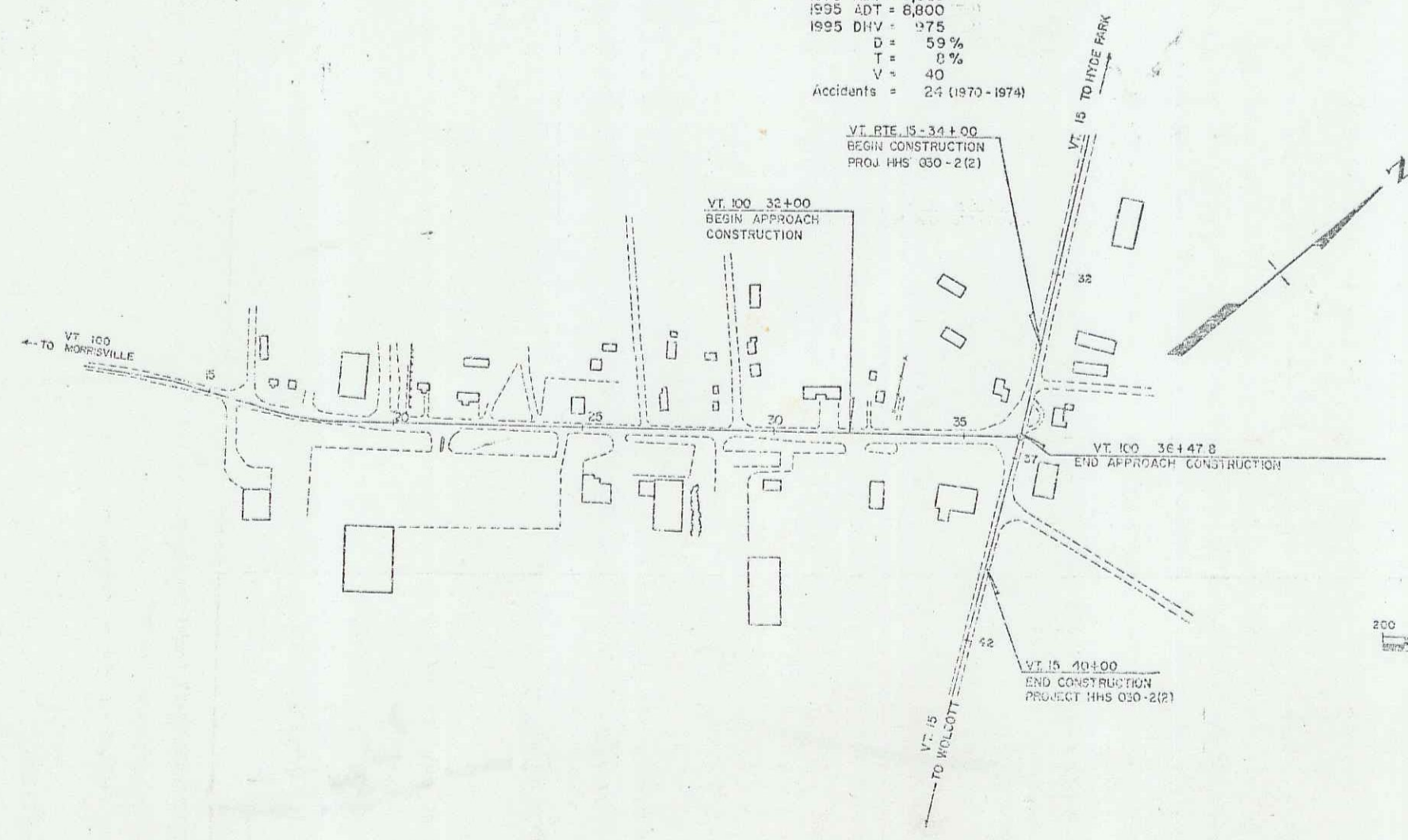


PROPOSED IMPROVEMENT
TOWN OF MORRISTOWN
COUNTY OF LAMOILLE
VERMONT ROUTE 15
STOWE-HARDWICK ROAD

CHANNELIZATION AT THE INTERSECTION WITH VERMONT ROUTE 100.
LENGTH OF PROJECT 600 FEET + 0.114 MILE

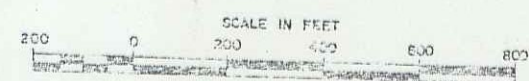


1975 ADT = 5,600
1995 ADT = 6,800
1995 DHV = 975
D = 5.9%
T = 0%
V = 40
Accidents = 24 (1970-1974)



MM0082-0093

- CONVENTIONAL SIGNS
- COUNTY LINE
 - TOWN LINE
 - LIMITS OF ACCESS
 - POINT OF ACCESS
 - FENCE LINE
 - STONE WALL
 - TRAVELLED WAY
 - GRAVEL RAIL
 - RAILROAD
 - SURVEY LINE
 - CULVERT
 - BRIDGE
 - UNDERPASS
 - TOP OF CUT
 - TOE OF BLUFF



These plans are subject to such engineering changes as may be required by the Federal Highway Administration or the Chief Engineer.
Construction is to be carried on in accordance with field notes and the Standard Specifications for Highway and Bridge Construction dated January 1, 1972 as approved by the Federal Highway Administration on December 28, 1971 for use on this project, including of subsequent revisions and such revised specifications and special provisions as are incorporated in these plans.

Pin# 76F124

APPROVED: *[Signature]* DATE: 7/30/75
CHIEF ENGINEER

DEPARTMENT OF TRANSPORTATION
FEDERAL HIGHWAY ADMINISTRATION

APPROVED: _____ DATE: _____
DIVISION ENGINEER

PROJECT HHS # 030-2(2)
SHEET 1 OF 23 SHEETS
S.E. 12/14/73

AUG 18 1980

SEEDING - URBAN AREA

1/2 wt	Lbs/A	Name	Pur. %	Grain %
38.46	25	Creeping Red Fescue	98	85
46.15	30	Kentucky Blue Grass	95	75
15.39	10	Annual Rye Grass	95	90
100.00	65			

The seed mixture shall not have a weed content exceeding .000% by weight and shall be free from all noxious weed seed.

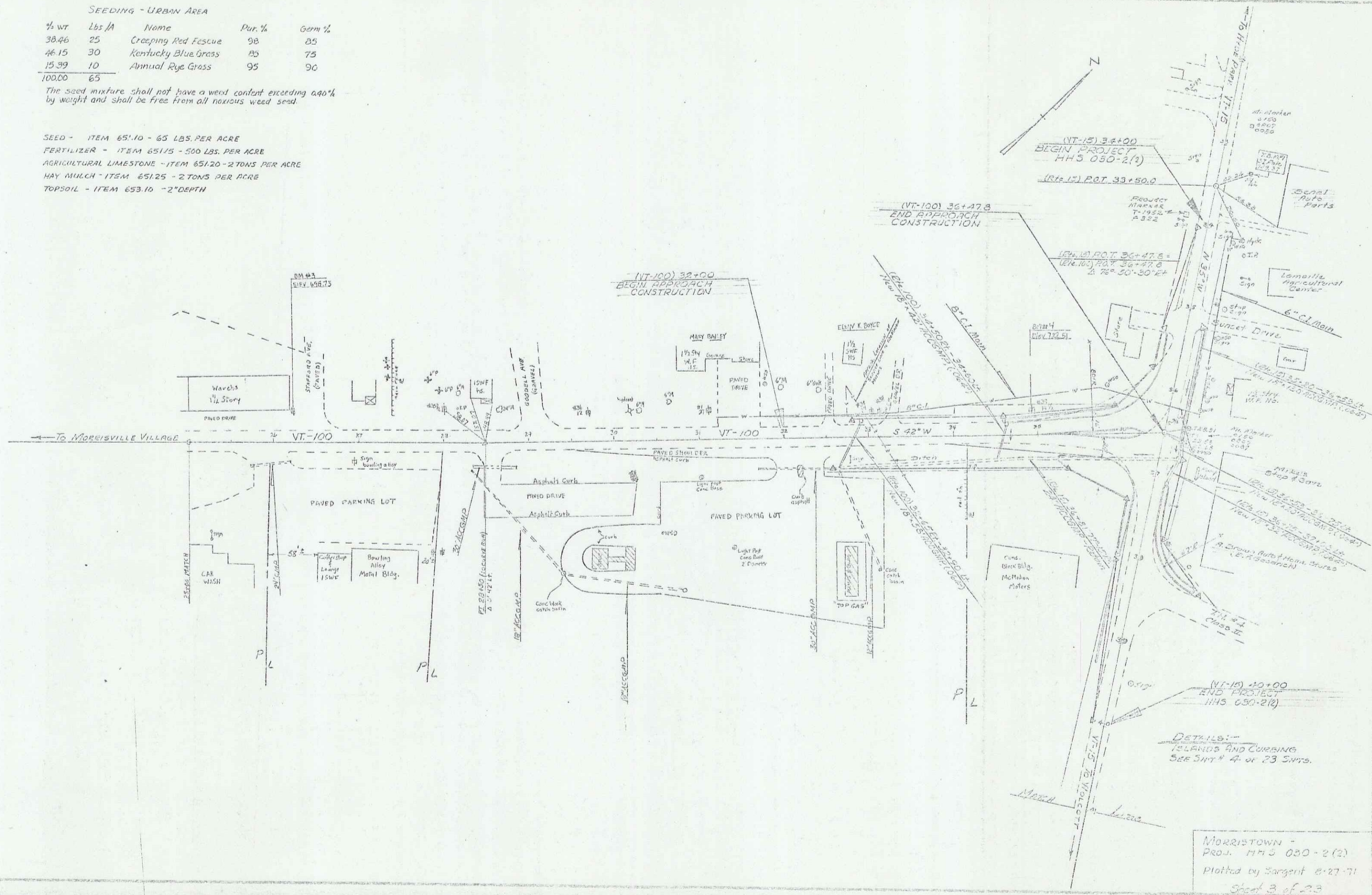
SEED - ITEM 65110 - 65 LBS. PER ACRE

FERTILIZER - ITEM 65115 - 500 LBS. PER ACRE

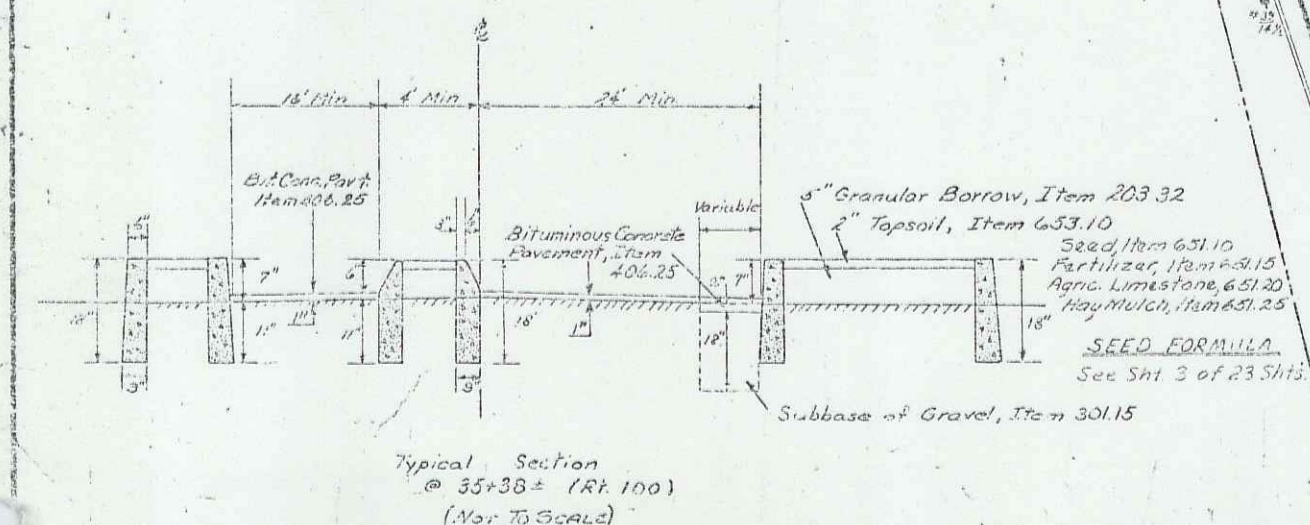
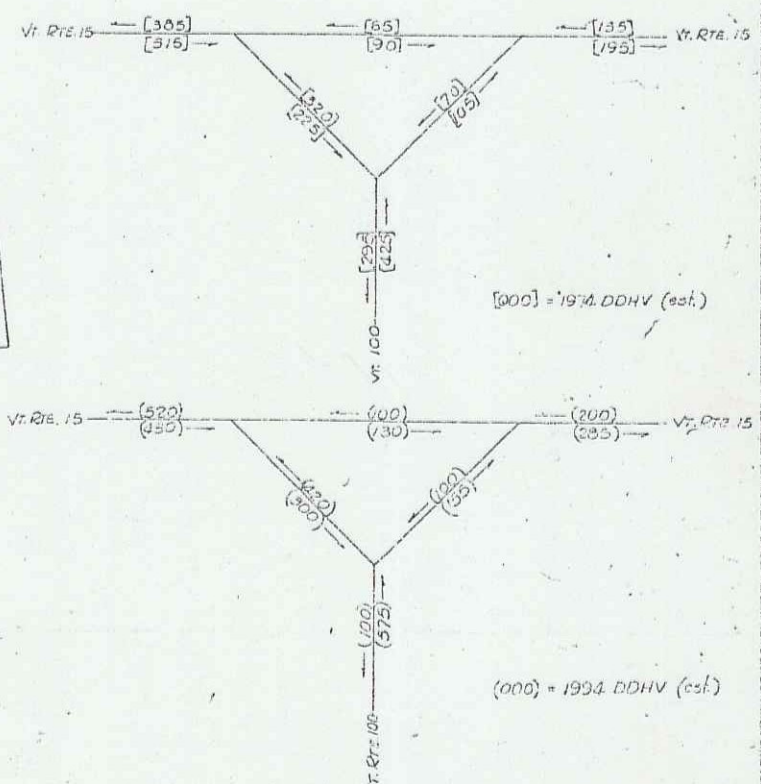
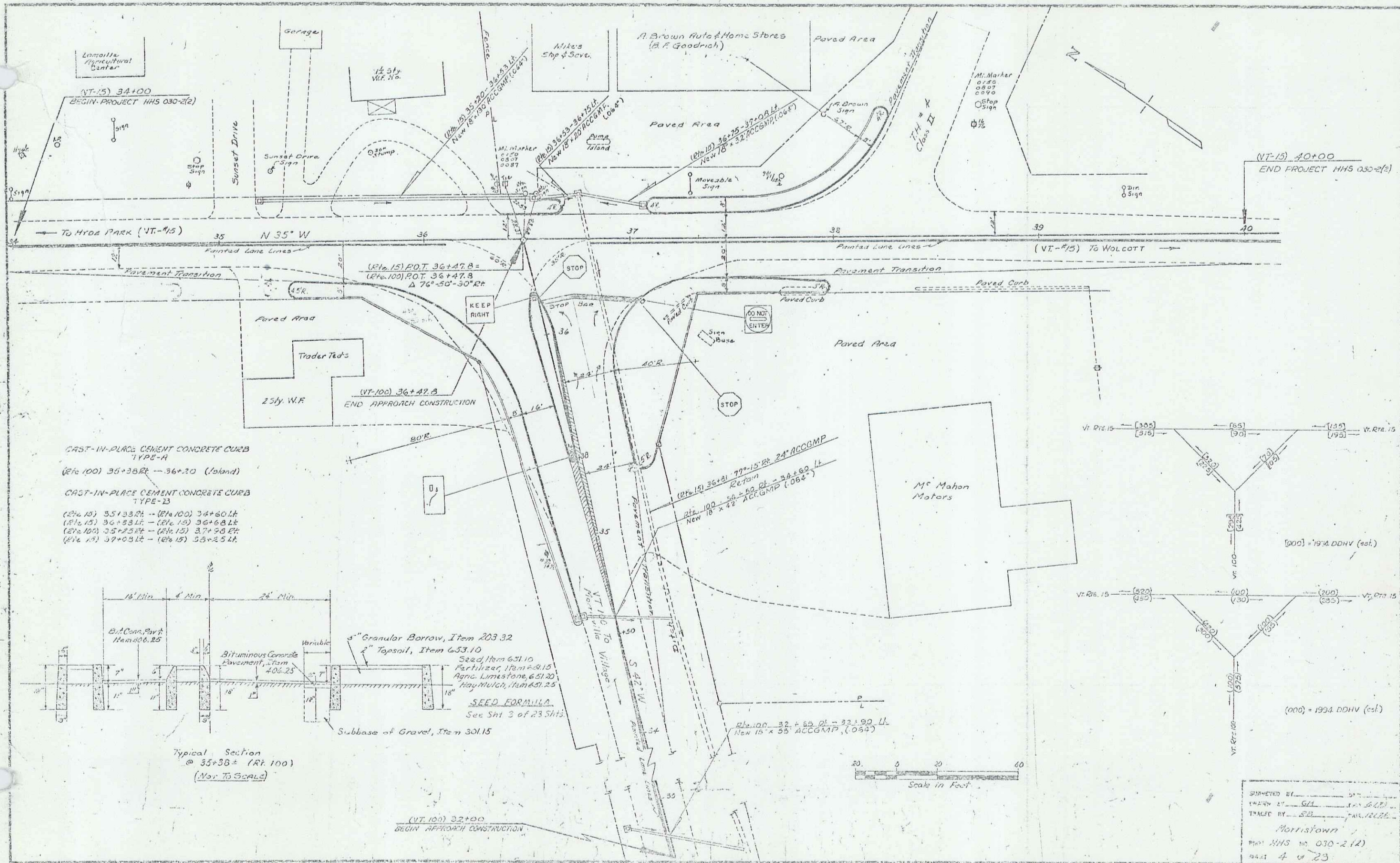
AGRICULTURAL LIMESTONE - ITEM 65120 - 2 TONS PER ACRE

HAY MULCH - ITEM 65125 - 2 TONS PER ACRE

TOPSOIL - ITEM 65310 - 2" DEPTH



AUG 18 1980 Z



DRAWN BY: S.L.
 CHECKED BY: S.L.
 TRACED BY: S.L.
 Morris Town
 Project: HHS No. 030-2(12)
 Date: 4/6/83

AUG 18 1980 3