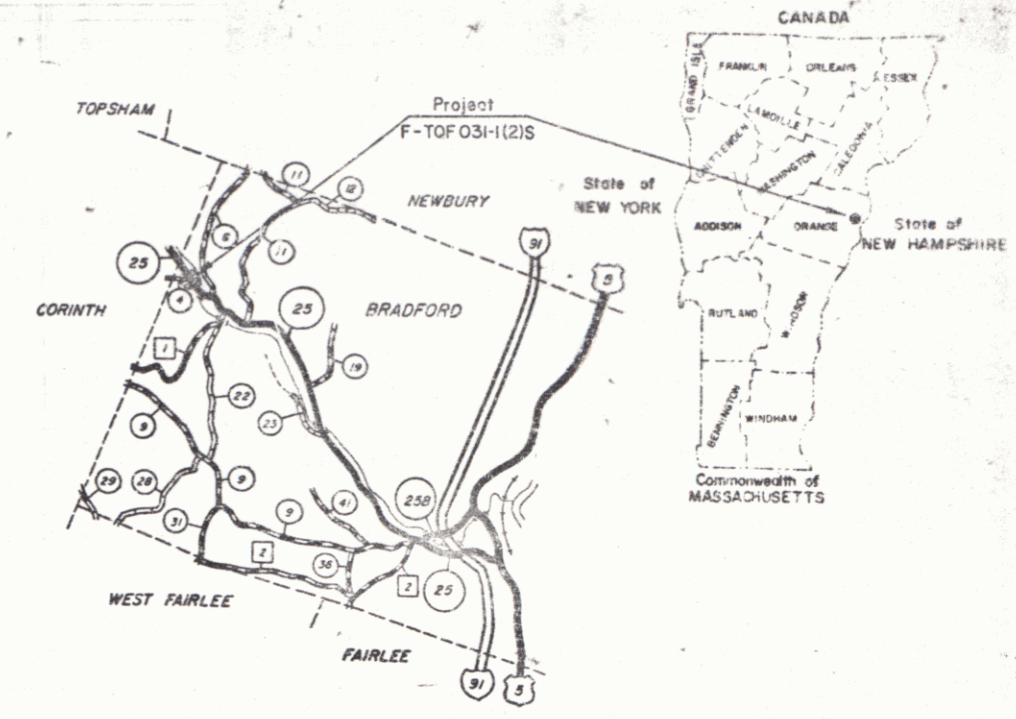


STATE OF VERMONT
AGENCY OF TRANSPORTATION



PROPOSED IMPROVEMENT
TOWN OF BRADFORD
COUNTY OF ORANGE
VT. RTE. 25



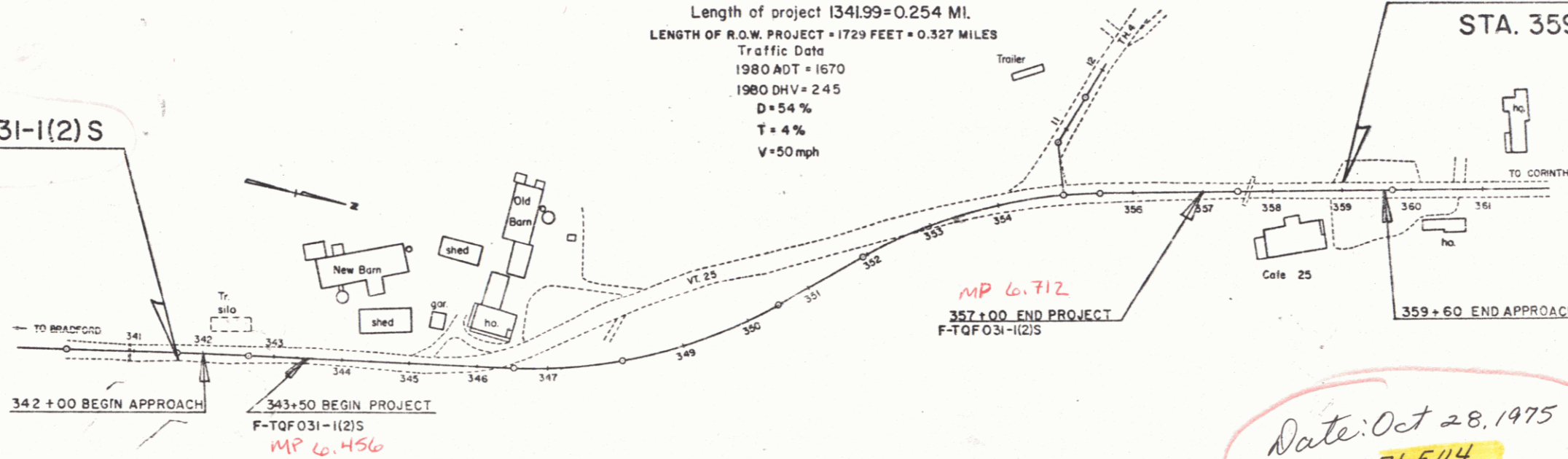
R.O.W. PLANS

Beginning at a point 5.953 miles north of the Intersection of U.S. Rte. 5 and Vt. Rte. 25 and extending northerly 0.254 mile.

Length of project 1341.99 = 0.254 MI.
LENGTH OF R.O.W. PROJECT = 1729 FEET = 0.327 MILES
Traffic Data
1980 ADT = 1670
1980 DHV = 245
D = 54 %
T = 4 %
V = 50 mph

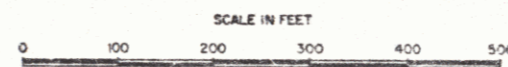
BEGIN ROW PROJECT F-TQF 031-1(2)S
STA. 341+63 RT.

END ROW PROJECT F-TQF 031-1(2)S
STA. 359+00 LT.



- CONVENTIONAL SIGNS
- COUNTY LINE
 - TOWN LINE
 - LIMITS OF ACCESS
 - POINT OF ACCESS
 - FENCE LINE
 - STONE WALL
 - TRAVELED WAY
 - GUARD RAIL
 - RAILROAD
 - SURVEY LINE
 - CULVERT
 - POWER POLE
 - TELEPHONE POLE
 - REES
 - CONTROL OF ACCESS
 - PROPERTY LINE
 - ROW TAKING LINE
 - SLOPE RIGHTS
 - TOP OF CUT
 - TOE OF SLOPE

DATUM
VERTICAL _____
HORIZONTAL _____



Date: Oct 28, 1975
Plan: 76F114

PROJECT PROCESSED UNDER
SECONDARY ROAD PLAN

These plans are subject to such engineering changes as may be required by the Federal Highway Administration or the Director of Engineering & Construction. Construction is to be carried on in accordance with these plans and the Standard Specifications for Highway and Bridge Construction dated March 1976, as approved by the Federal Highway Administration on October 27, 1976 for use on this project, including all subsequent revisions, and such revised specifications and special provisions as are incorporated in these plans.

APPROVED: _____
CHIEF, PROPERTY ADMINISTRATION
DATE: 10-28-75

SUBMITTED BY ORDER OF THE STATE TRANSPORTATION BOARD

APPROVED: _____ DATE: OCT 28 1975
DIRECTOR OF ENGINEERING AND CONSTRUCTION

DEPARTMENT OF TRANSPORTATION
FEDERAL HIGHWAY ADMINISTRATION

APPROVED: _____ DATE: _____
DIVISION ADMINISTRATION

PROJECT: F-TQF NO. 031-1(2)S
SHEET: 1 OF 5 SHEETS

EROSION MATING
 Rev 347+25-347+00 LT
 Rev 347+50-354+50 RT

EXCAVATION AND REMOVAL OF ROAD SURFACES AND PAVEMENTS
 Rev 348+25-353+16 LT

CONSTRUCT DRIVE
 346+00-348+16 RT
 348+16 LT
 356+00 RT

CONSTRUCT APPROACH
 Rev 354+92 LT (T.H. 4)

GUARD RAIL, STD STL BEAM W/ WOOD POSTS TYPE II
 Rev 346+00-347+725 RT

REMOVAL AND DISPOSAL OF EXISTING GUARD RAIL & SPRING
 Rev 356+89-357+66 LT
 Rev 357+38-358+05 RT

END ROW PROJECT F-TQF 031-1(2)S
STA. 359+00 LT.

DATE	BY
REVISION	BY
NO. 1	DATE
NO. 2	DATE
NO. 3	DATE
NO. 4	DATE
NO. 5	DATE
NO. 6	DATE
NO. 7	DATE
NO. 8	DATE
NO. 9	DATE
NO. 10	DATE

DATE	BY
REVISION	BY
NO. 1	DATE
NO. 2	DATE
NO. 3	DATE
NO. 4	DATE
NO. 5	DATE
NO. 6	DATE
NO. 7	DATE
NO. 8	DATE
NO. 9	DATE
NO. 10	DATE

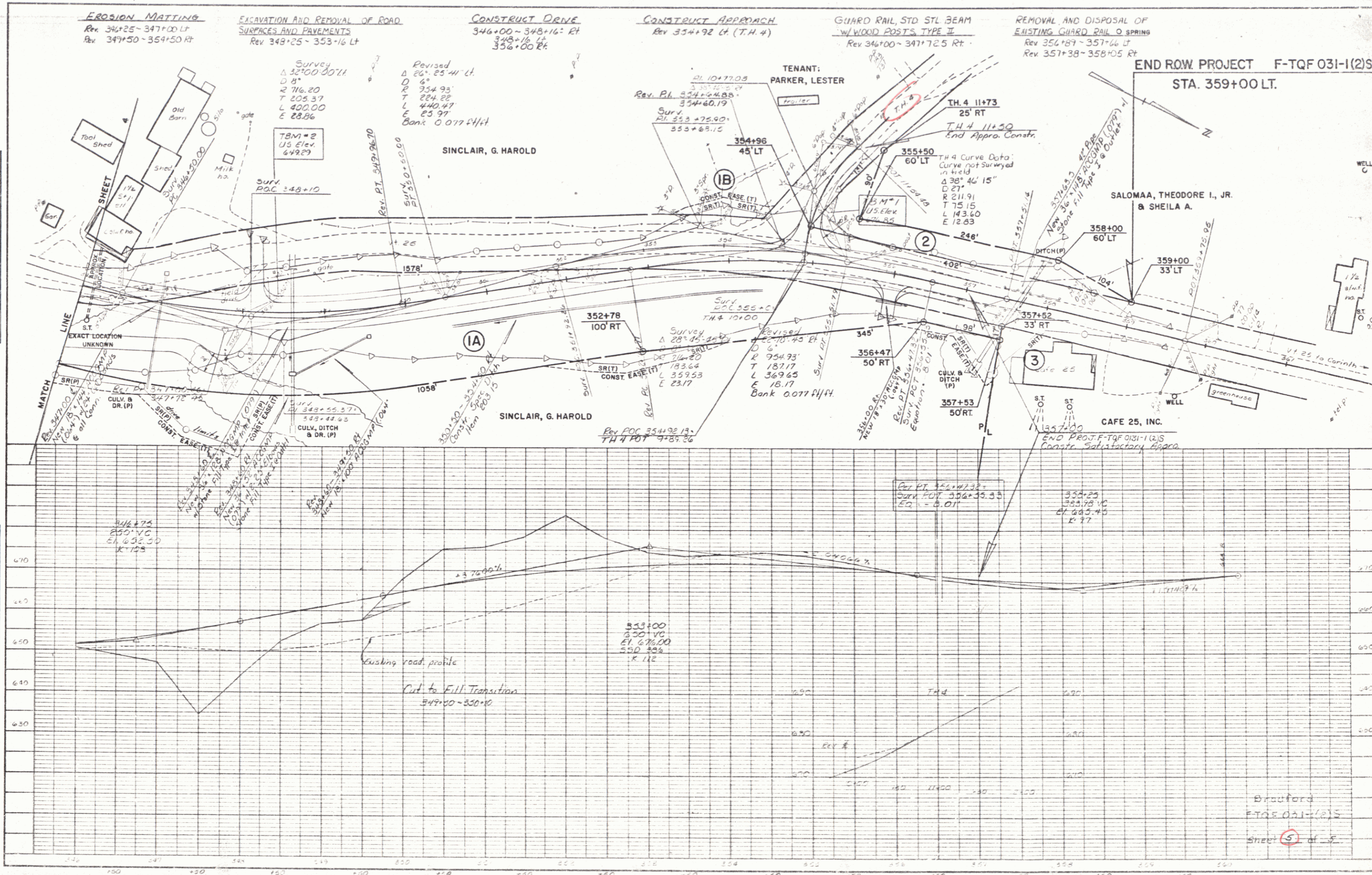


PLATE: PLAN PROFILE

Bradford
 F-TQF 031-1(2)S
 Sheet 5 of 5