

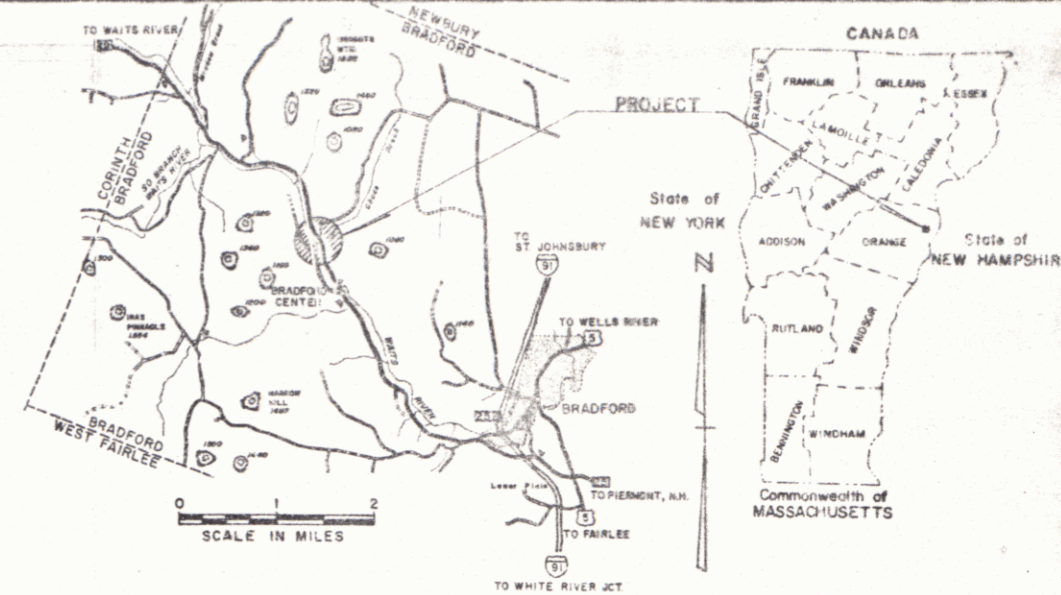
INDEX OF SHEETS

- 1 TITLE PAGE
- 2 TYPICAL
- 3 DRAINAGE SHEET
- 4 EARTHWORKS
- 5 PLAN - PROFILE
- 6-15 CROSS SECTIONS

STATE OF VERMONT
DEPARTMENT OF HIGHWAYS



PROPOSED IMPROVEMENT
TOWN OF BRADFORD
COUNTY OF ORANGE
VT. RTE. 25
BRADFORD-BARRÉ ROAD



R.O.W. PLANS

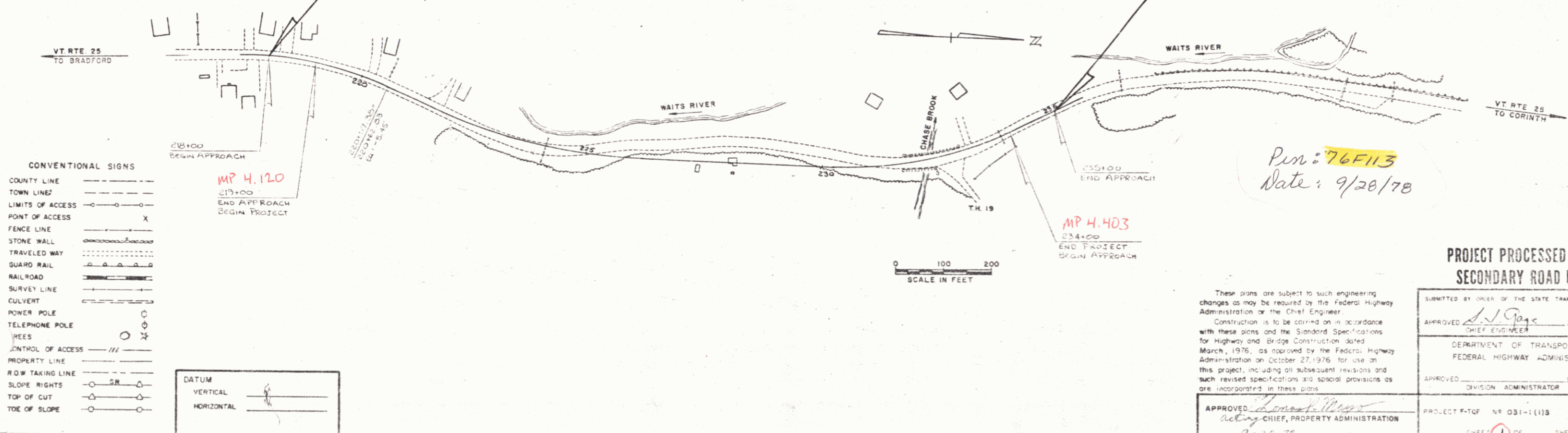
BEGIN R.O.W. PROJECT F-TQF 031-1(1)S
STA. 218+00.0

END R.O.W. PROJECT F-TQF 031-1(1)S
STA. 235+00.0

BEGINNING AT A POINT APPROXIMATELY 2.027 MILES
SOUTHEASTERLY OF THE BRADFORD-CORINTH TOWN
LINE AND EXTENDING 0.283 MILES NORTHWESTERLY
LENGTH OF ROADWAY 1476.35 FEET = 0.280 MILES
LENGTH OF BRIDGE 18.17 FEET = 0.003 MILES (Incl. in Plan)
LENGTH OF PROJECT 1494.52 FEET = 0.283 MILES

1979 AADT = 2150
1979 DHV = 325
1989 AADT = 2595
1989 DHV = 390
D = 58%
T = 5%
V = 40 MPH

LENGTH OF R.O.W. PROJECT = 1694.55 FEET = 0.321 MILES



- CONVENTIONAL SIGNS
- COUNTY LINE
 - TOWN LINE
 - LIMITS OF ACCESS
 - POINT OF ACCESS
 - FENCE LINE
 - STONE WALL
 - TRAVELED WAY
 - GUARD RAIL
 - RAILROAD
 - SURVEY LINE
 - CULVERT
 - POWER POLE
 - TELEPHONE POLE
 - WEEPS
 - CONTROL OF ACCESS
 - PROPERTY LINE
 - R.O.W. TAKING LINE
 - SLOPE RIGHTS
 - TOP OF CUT
 - TOE OF SLOPE

DATUM
VERTICAL
HORIZONTAL

These plans are subject to such engineering changes as may be required by the Federal Highway Administration or the Chief Engineer.
Construction is to be carried on in accordance with these plans and the Standard Specifications for Highway and Bridge Construction dated March, 1976, as approved by the Federal Highway Administration on October 27, 1976 for use on this project, including all subsequent revisions and such revised specifications and special provisions as are incorporated in these plans.

PROJECT PROCESSED UNDER
SECONDARY ROAD PLAN

SUBMITTED BY ORDER OF THE STATE TRANSPORTATION BOARD

APPROVED: *[Signature]* DATE 9-28-78
CHIEF ENGINEER

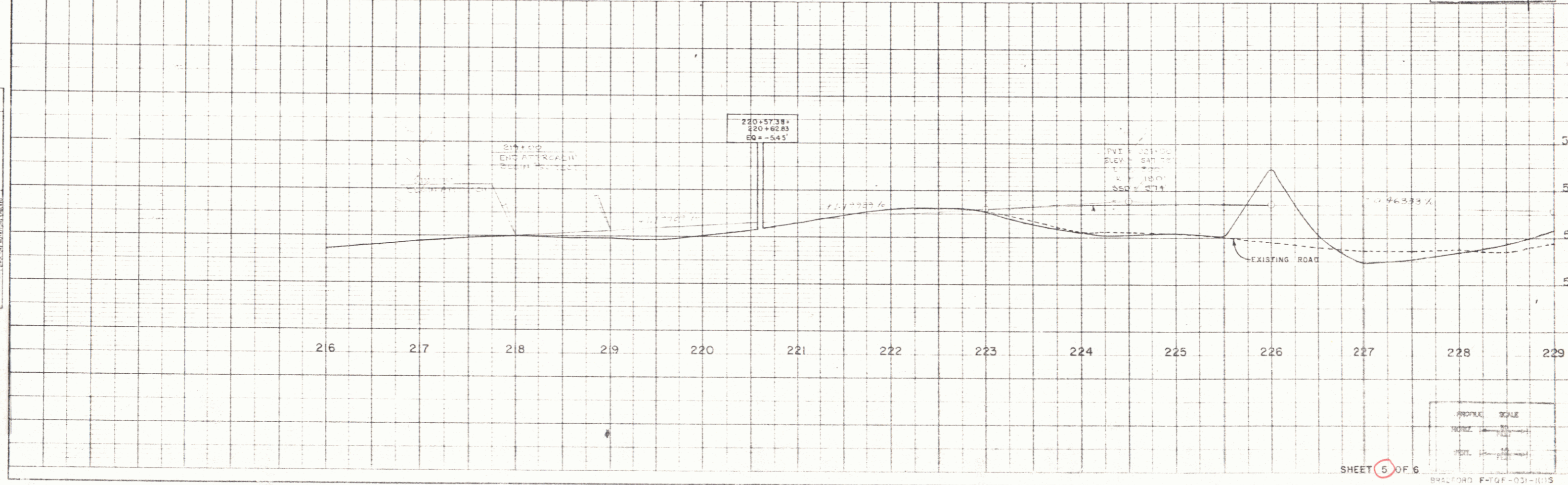
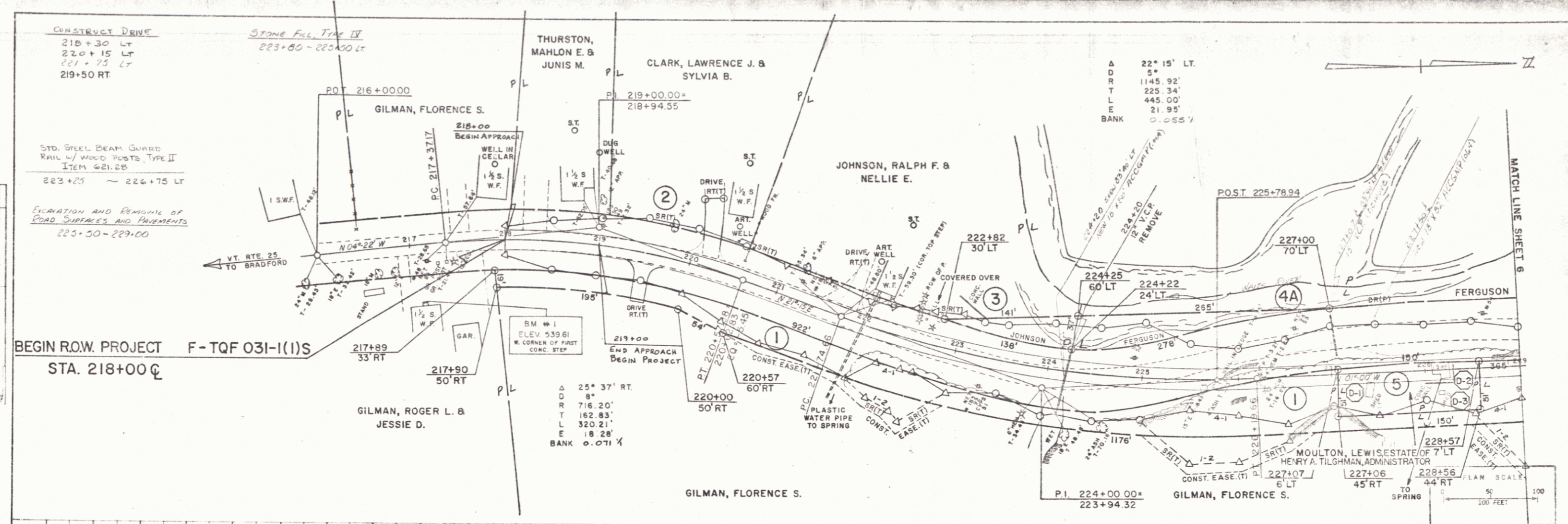
DEPARTMENT OF TRANSPORTATION
FEDERAL HIGHWAY ADMINISTRATION

APPROVED: _____ DATE _____
DIVISION ADMINISTRATOR

PROJECT F-TQF NR 031-1(1)S
SHEET 1 OF 1 SHEETS

SRS 02/10/70

APPROVED: *[Signature]*
ACTING CHIEF, PROPERTY ADMINISTRATION
DATE 9-28-78



PLAN
 DATE: 1/17/77
 DRAWN BY: [illegible]
 CHECKED BY: [illegible]
 PROJECT: [illegible]

PROFILE
 DATE: 1/17/77
 DRAWN BY: [illegible]
 CHECKED BY: [illegible]
 PROJECT: [illegible]

