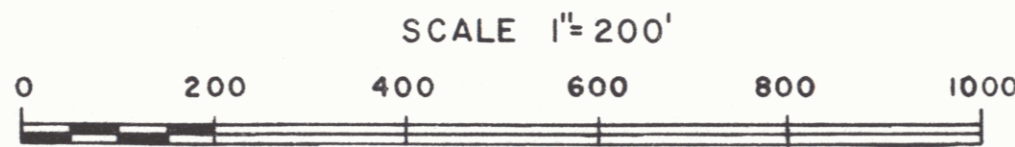
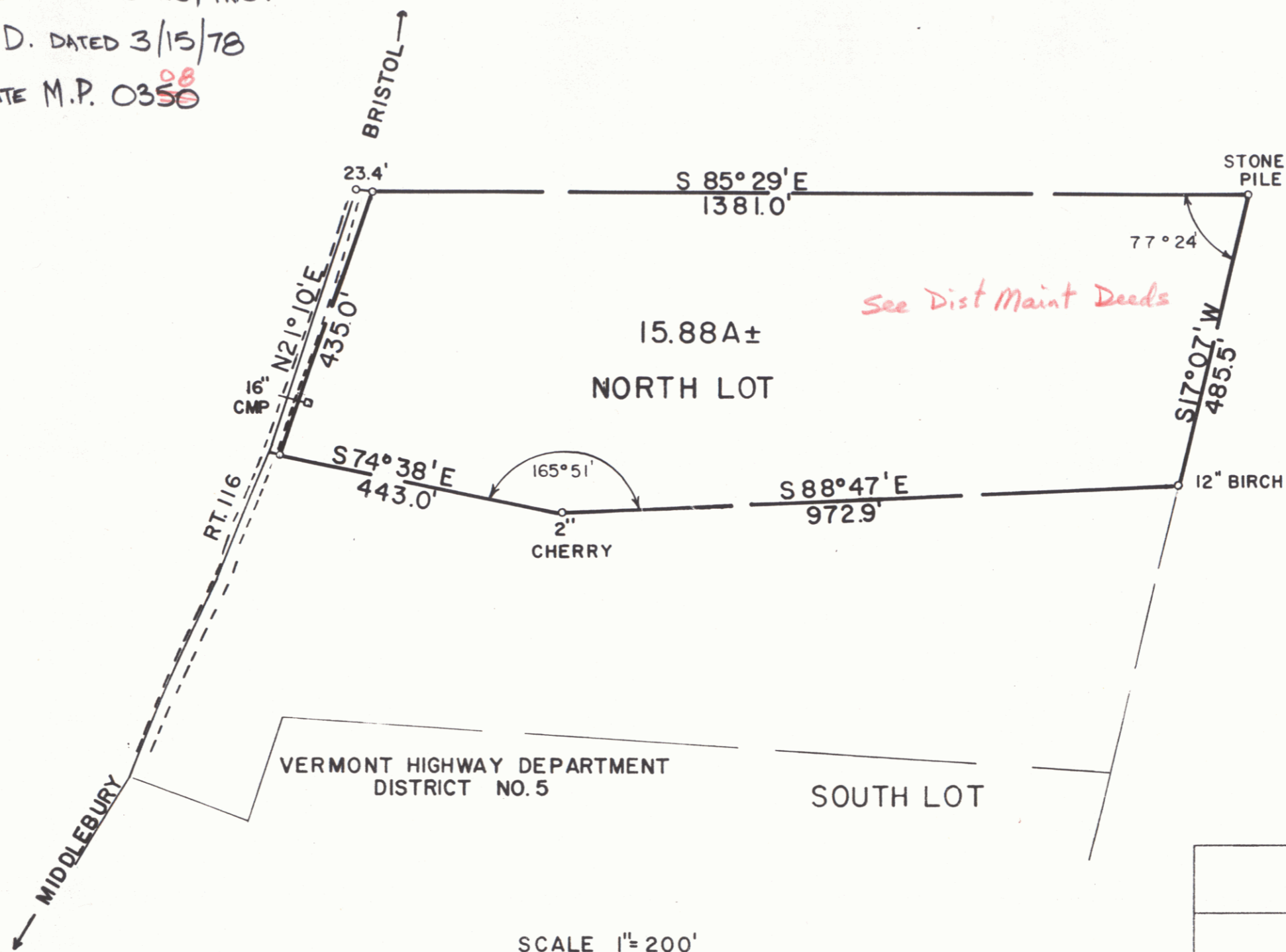


ACQUIRED FROM ROY W. PALMER & CARRIE A. PALMER
BY WD DATED 6-13-41 & RECORDED IN BK. 47 PG. 249

STATE OF VERMONT TO
J.P. CARRARA AND SONS, INC.
BY Q.C.D. DATED 3/15/78
APPROXIMATE M.P. 0350⁰⁸



MAINTANCE AREA <i>VT 116</i>		
STATE OF VERMONT DEPT. OF HIGHWAYS		
TOWN OF MIDDLEBURY		
PROJECT	ROW	16-1977
APPROX. SCALE	1"=200'	DATE 2-21-78
DRAWN BY		FJM

SHEET *3B*

21 6