

Removal and Disposal of Existing Guard Rail

190+44 - 190+69 LT  
 190+44 - 190+56 RT  
 190+38 - 191+22 RT  
 191+01 - 191+12 LT  
 192+75 - 194+00 RT\*

\* Place New Fender for Two Curb  
 G.R. on Remaining G.R.

BEGIN R.O.W. PROJECT TQF 026-1(21)  
 STA. 187+50 C

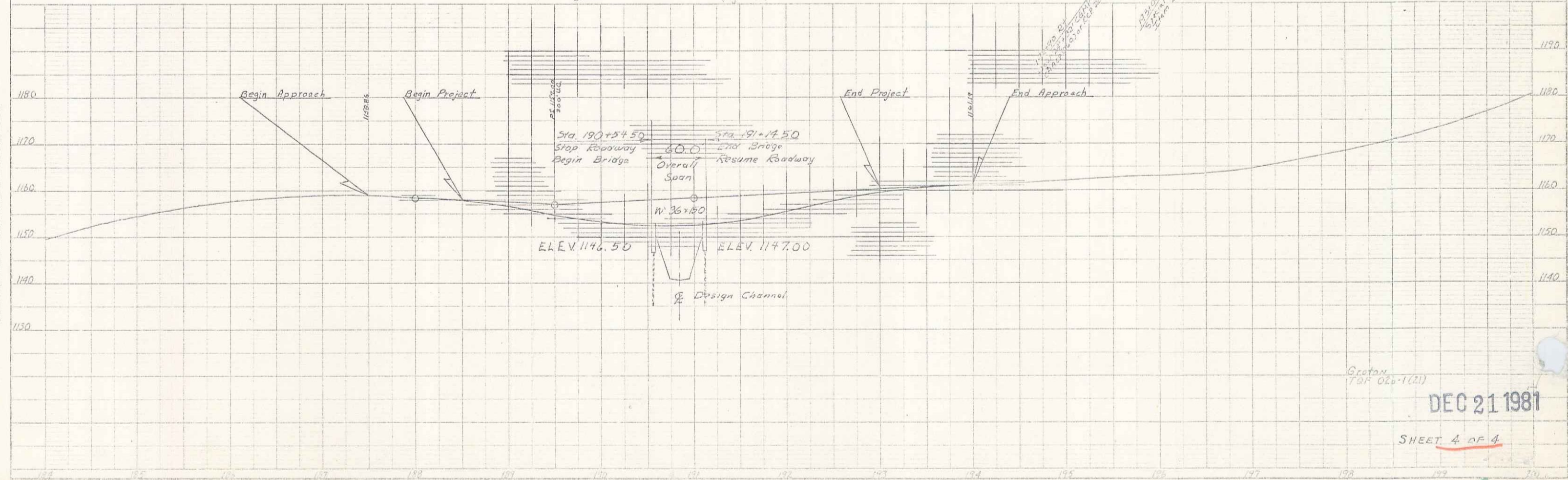
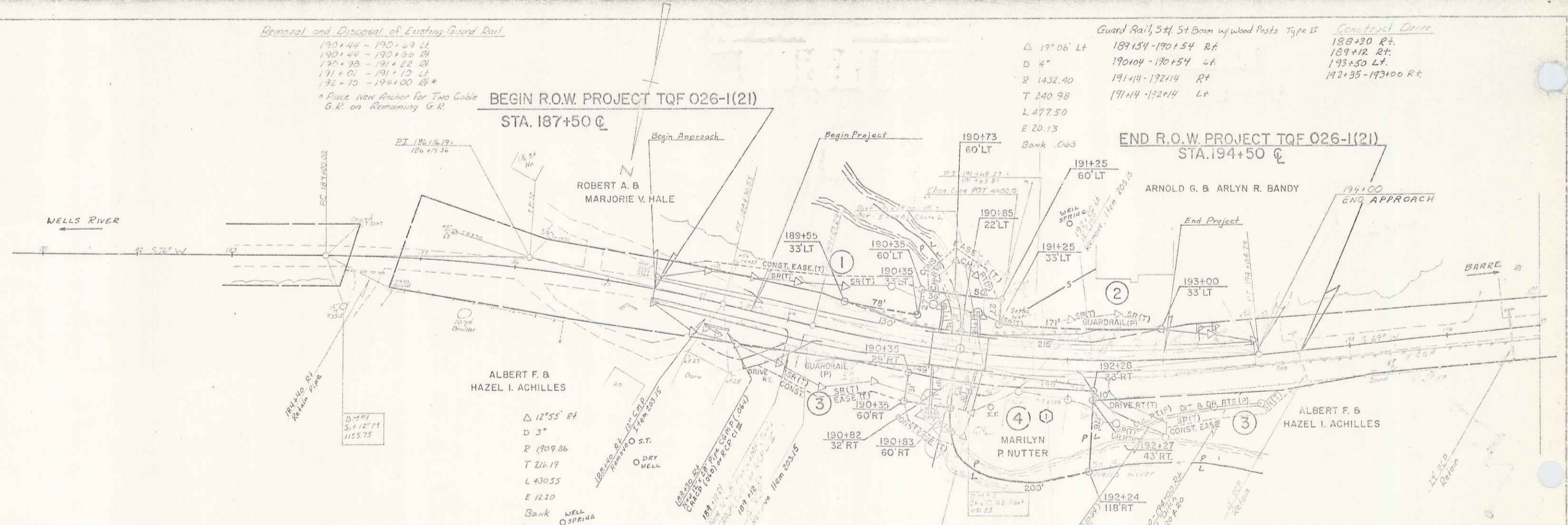
Guard Rail, 5ft St Beam w/ Wood Posts Type II

Δ 19° 06' LT  
 D 4"  
 R 1432.40  
 T 240.98  
 L 477.50  
 E 20.13  
 Bank 0.03

Contract Drive

189+30 RT  
 189+42 RT  
 193+50 LT  
 192+35 - 193+00 RT

END R.O.W. PROJECT TQF 026-1(21)  
 STA. 194+50 C



Gorton  
 TQF 026-1(21)

DEC 21 1981

SHEET 4 OF 4

3

PLAN  
 SCALE: 1" = 40'  
 DATE: 12/17/81  
 DRAWN BY: J. W. GORTON  
 CHECKED BY: J. W. GORTON

PROFILE  
 SCALE: 1" = 10'  
 DATE: 12/17/81  
 DRAWN BY: J. W. GORTON  
 CHECKED BY: J. W. GORTON

PLATE 1 PLAN PROFILE  
 1/8" = 100' 1/8" = 200'