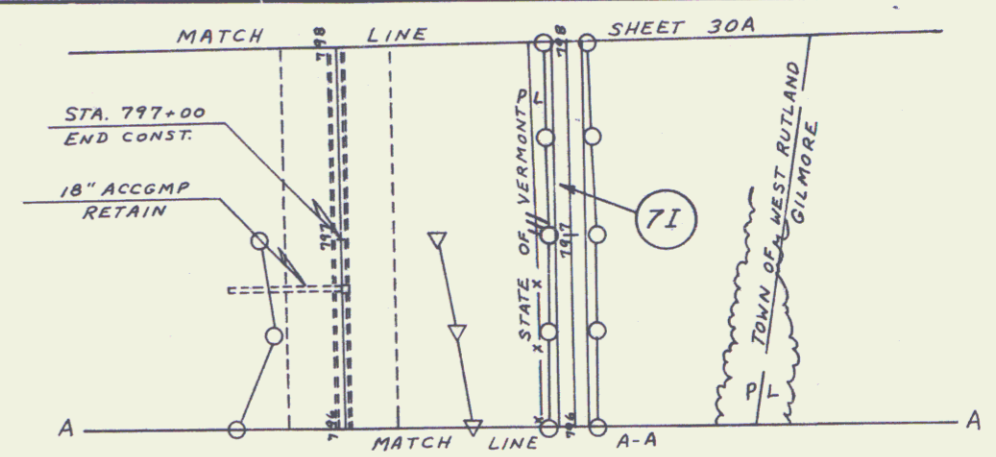
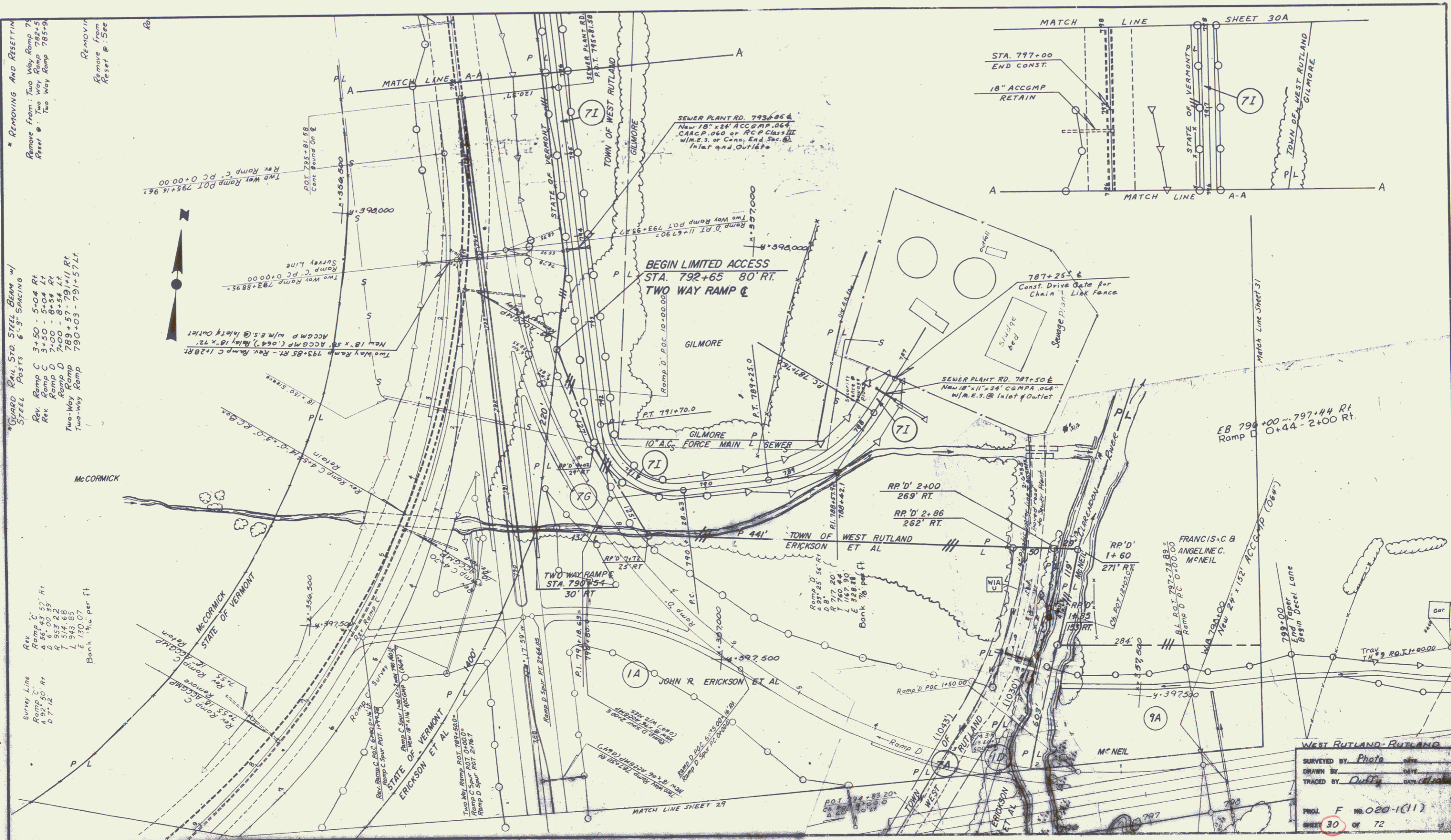


\* REMOVING AND RESETTING  
 Remove from Two Way Ramp 74  
 Reset # Two Way Ramp 782+5  
 Two Way Ramp 785+9  
 Remove from  
 Reset # See

GUARD RAIL STD. STEEL BEAM w/  
 STEEL POSTS 6"x3" SPACING  
 Rev Ramp C 3+50 - 5+04 Rt  
 Rev Ramp C 3+50 - 5+04 Lt  
 Rev Ramp D 7+00 - 8+54 Rt  
 Rev Ramp D 7+00 - 8+54 Lt  
 Two-Way Ramp 789+57 - 791+11 Rt  
 Two-Way Ramp 790+03 - 791+57 Lt

Survey Line  
 Ramp C  
 4.95' 30' Rt  
 0.7712  
 Ramp C  
 4.95' 30' Rt  
 0.7712  
 Ramp D  
 5.14' 68'  
 1.5458  
 Ramp D  
 5.14' 68'  
 1.5458  
 Bank 1/4" per ft



WEST RUTLAND - RUTLAND  
 SURVEYED BY: Photo  
 DRAWN BY: Duff  
 TRACED BY: Duff  
 PROJ. F. NO. 020-1(11)  
 SHEET 30 OF 72