

APPROACH BRIDGE
 EB 775+30 - 777+30.41
 EB 775+34 - Ramp A C-46.5 ft
 WB 774+90 - 777+30.41
 WB 775+00 - 777+30.41

CHAIN LINK FENCE Item 620.11
 EB 775+35 - Ramp A 4100.2 ft

* GUARD RAIL THREE CABLE W/ LIGHT STEEL POSTS
 WB 776+50.5 - 780+00.11
 Ramp A 0100 - 4100 ft

* TREATED TIMBER CURB
 WB 774+90 - 777+30.41
 Ramp A 3130 - 4100 ft

REMOVING AND RESETTING FENCE
 Remove from EB 779+00 Rt. Two Way Ramp 793+88 ft
 Reset @ See Special Provisions
 to be removed by State force prior to construction by Contractor

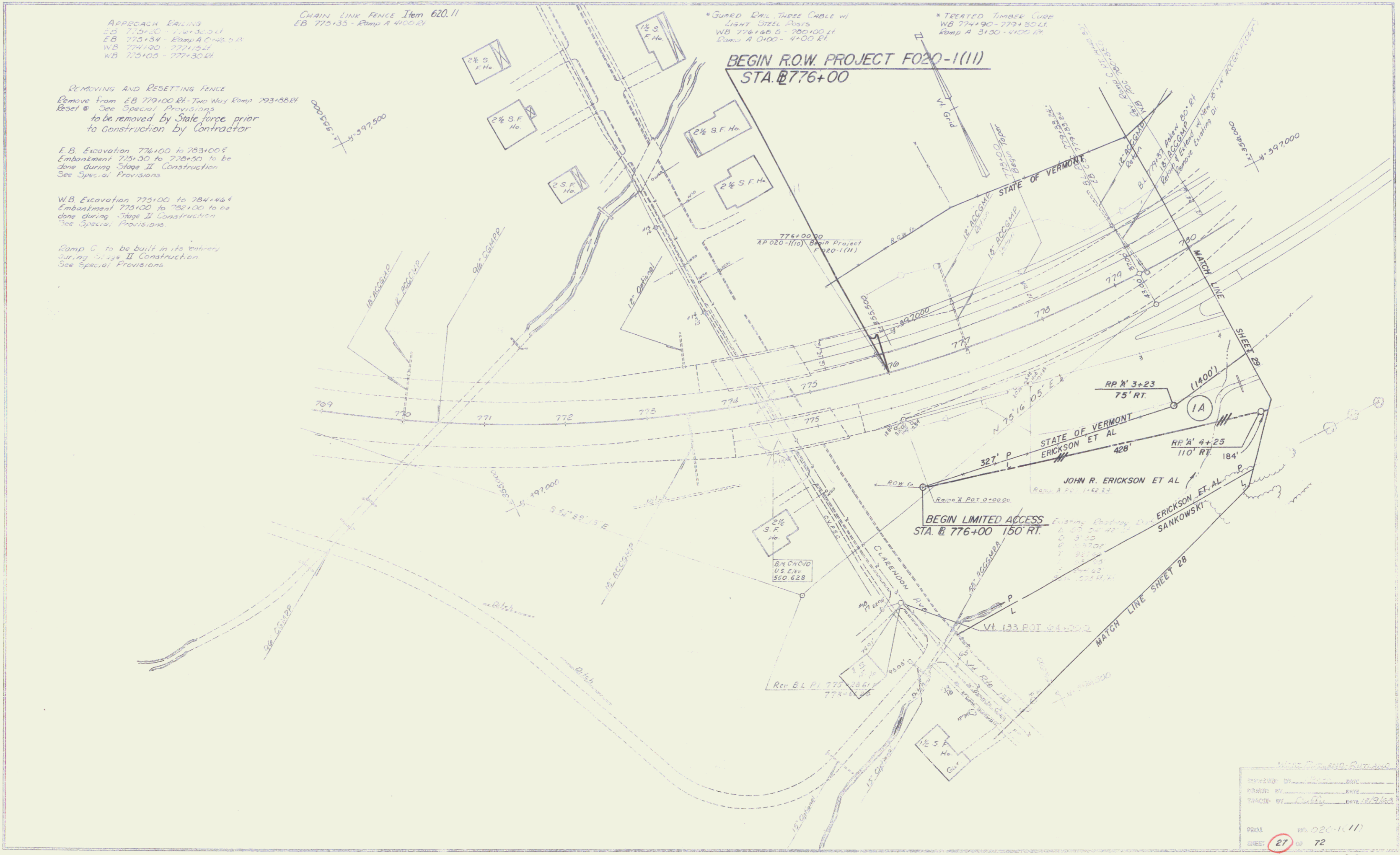
E.B. Excavation 776+00 to 783+00.5
 Embankment 775+00 to 778+00 to be done during Stage II Construction
 See Special Provisions

W.B. Excavation 775+00 to 784+46.6
 Embankment 775+00 to 780+00 to be done during Stage II Construction
 See Special Provisions

Ramp C to be built in its entirety during Stage II Construction
 See Special Provisions

BEGIN R.O.W. PROJECT F020-1(11)
 STA. @ 776+00

BEGIN LIMITED ACCESS
 STA. @ 776+00 150' RT.



DESIGNED BY	DATE
DRAWN BY	DATE
CHECKED BY	DATE
PROJECT	NO. 020-1(11)
SHEET	27 of 72