

CONCRETE DRIVE  
 LT 1570+75 1572+82  
 1571+10 Conn. 12140  
 1572+82  
 Con. 13+50

ROCK FILL  
 LT 1576+00-1576+10

DEMOLITION & REMOVAL OF BUILDING  
 #1 12x30 RT US 2 CONNECTOR  
 #2 12x30 RT US 2 CONNECTOR  
 #3 12x75 RT US 2 CONNECTOR

REMOVAL & DISPOSAL OF EXISTING GUARD RAIL  
 RT 1579+00-1579+90

DRAINING & BLASTING OF SAND PILES SURROUNDING  
 LT 1580+75-1583+0

CONCRETE APPROACH  
 LT 1574+00 (14'x37')

22' SAND BARRIERS  
 1580+75 - 1581+25

EXCAVATION & REMOVAL OF ROAD SURFACES & PAVEMENT  
 RT 1571+50 - 1579+20

NOTE:  
 LINES ARE TO BE CONFLICTED WITH A MINIMUM  
 WIDTH OF 4 FEET AND A CLEAR RADIUS OF AT  
 LEAST 20 FEET OR AS DIRECTED BY THE  
 RESIDENT ENGINEER.

TREATED TIMBER CURB  
 LT 1576+75 - 1578+50

GRAVEL 23' 570 STEP 3874  
 1576+25-1577+00 1576+58-Conn. 11715  
 1577+00-1577+10 1577+00-1577+10

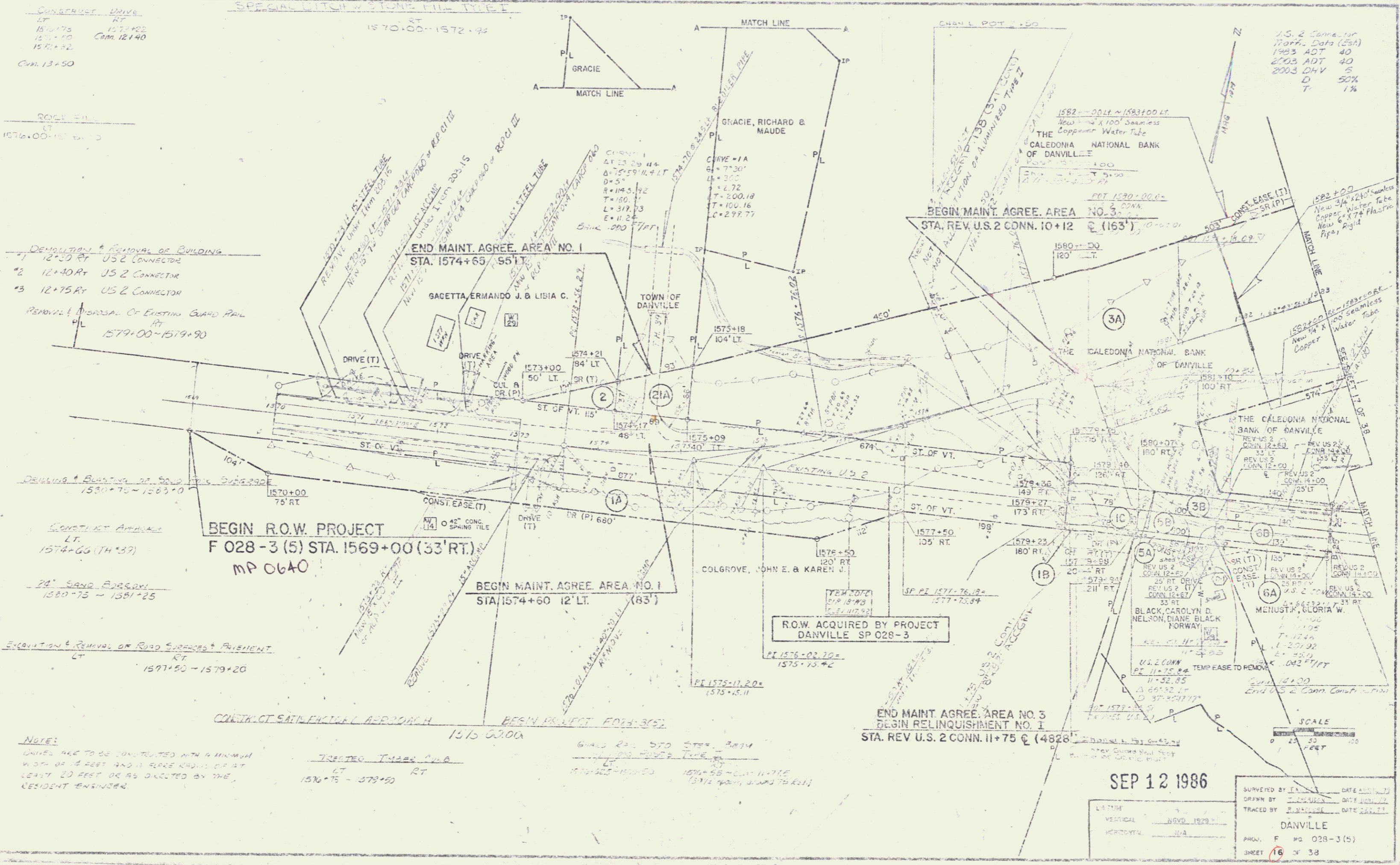
BEGIN R.O.W. PROJECT  
 F 028-3 (5) STA. 1569+00 (33' RT.)  
 MP 0640

BEGIN MAINT. AGREE. AREA NO. 1  
 STA. 1574+60 12' LT. (83')

END MAINT. AGREE. AREA NO. 1  
 STA. 1574+65 55' LT.

END MAINT. AGREE. AREA NO. 3  
 BEGIN RELINQUISHMENT NO. 1  
 STA. REV. U.S. 2 CONN. 11+75 @ (4828')

R.O.W. ACQUIRED BY PROJECT  
 DANVILLE SP 028-3



U.S. 2 Conn. for  
 1700 ft. Data (15A)  
 1983 ADT 40  
 2003 ADT 40  
 2003 OHV 5  
 D 50%  
 T 1%