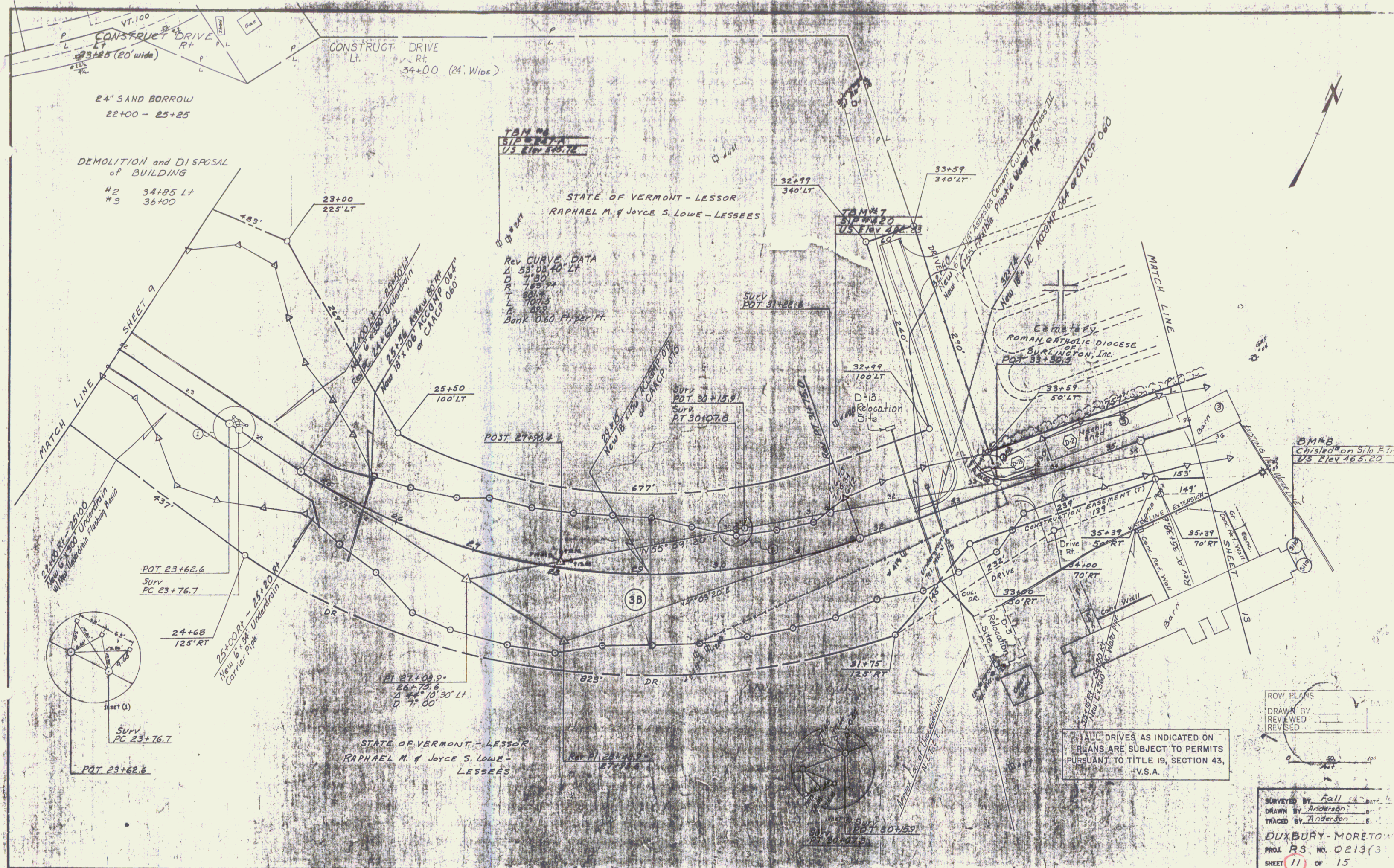


POOR ORIGINAL COPY



24" SAND BORROW  
22+00 - 25+25

DEMOLITION and DISPOSAL  
of BUILDING  
#2 34+85 LT  
#3 36+00

TAN #6  
SIP #20  
US ELEV 465.76

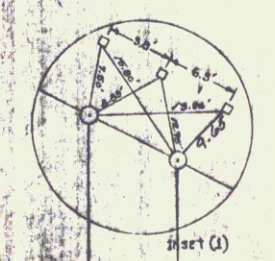
STATE OF VERMONT - LESSOR  
RAPHAEL M. & JOYCE S. LOWE - LESSEES

REV CURVE DATA  
D 53' 03" 40' LT  
R 780.00  
L 707.5  
A 88.8  
Bank 0.60 FT/100 FT

TAN #7  
SIP #20  
US ELEV 465.83

CEMETERY  
ROMAN CATHOLIC DIOCESE  
SURT. OF  
SURTINGTON, Inc.  
POT 33+59.4

TAN #8  
Chisled on Silo E. In  
US Elev 465.20



POT 23+62.6  
Surv  
PC 23+76.7

Surv  
PC 23+76.7

POT 23+62.6

STATE OF VERMONT - LESSOR  
RAPHAEL M. & JOYCE S. LOWE - LESSEES

REV P.I. 24+15.5  
ELEV 465.76



POT 30+25.7  
Surv  
PC 30+42.8

ALL DRIVES AS INDICATED ON  
PLANS ARE SUBJECT TO PERMITS  
PURSUANT TO TITLE 19, SECTION 43,  
V.S.A.

ROW PLANS  
DRAWN BY  
REVISED  
REVISED

SURVEYED BY Fall  
DRAWN BY Anderson  
CHECKED BY Anderson  
DUXBURY-MORETOWN  
PROJ. RS. NO. 0213(3)  
SHEET 11 OF 15