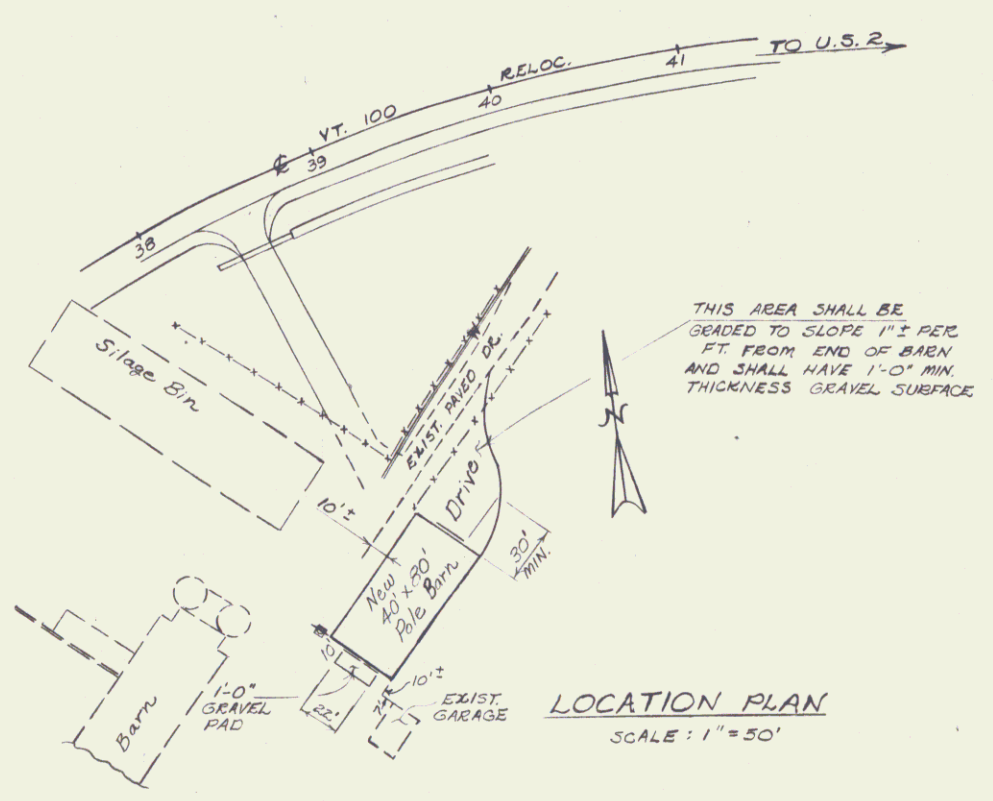
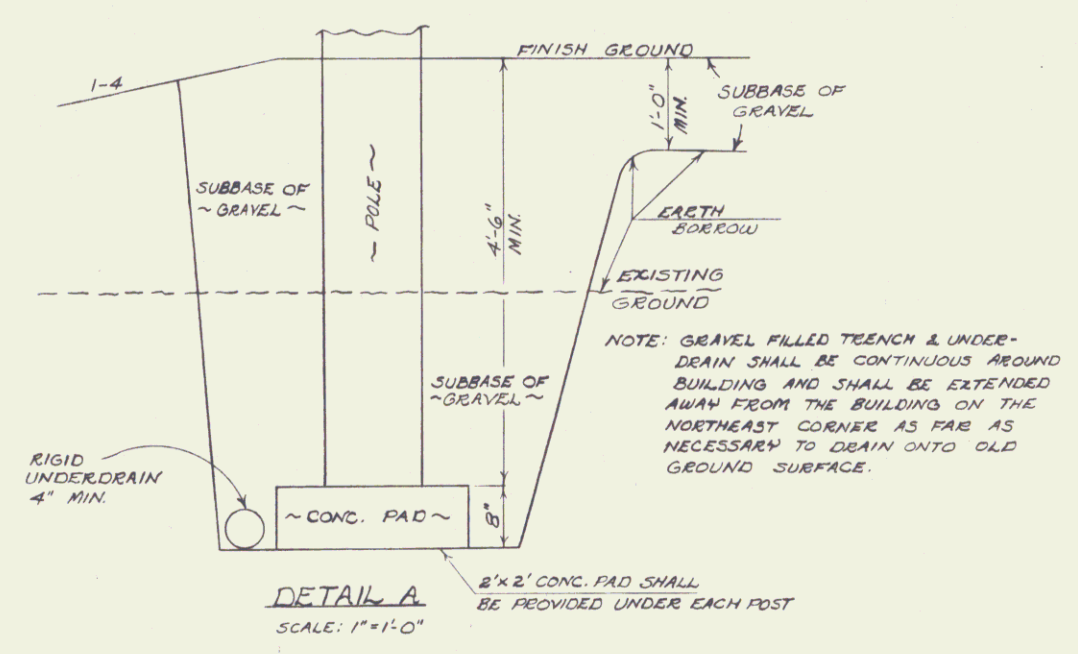


TYPICAL SECTION  
SCALE: 1"=5'

NOTES

1. SEE SPECIFICATIONS FOR ADDITIONAL DETAILS.
2. FINISH FLOOR SHALL BE LEVEL, WITH ELEVATION EQUAL TO DRIVEWAY ELEVATION AT THE SOUTHWEST CORNER OF THE BUILDING.
3. ALL VEGETATION AND POOR MATERIAL SHALL BE REMOVED FROM THE BUILDING SITE PRIOR TO EXCAVATION FOR THE GRAVEL-FILLED TRENCH. ALL EXCAVATED MATERIAL SHALL BE STOCKPILED ALONG THE NORTHEAST LIMIT OF CONSTRUCTION FOR USE BY OTHERS.



STATE OF VERMONT DEPARTMENT OF HIGHWAYS	
TOWN OF <b>DUXBURY</b>	Bridge No.
PROJECT NO.	Log Sta.
	Surv. Sta.
NEW POLE BARN DETAILS	
Designed by	Drawn by <b>J. WEAVER</b>
Checked by <b>W. TRIPP</b> date	Bridge Design Supervisor <b>W. TRIPP</b> date
PROJECT <b>DUXBURY-MORETOWN</b>	PROJECT NO.
Bridge Sheet No.	Sheet <b>2</b> of 2