

STATE OF VERMONT DEPARTMENT OF HIGHWAYS

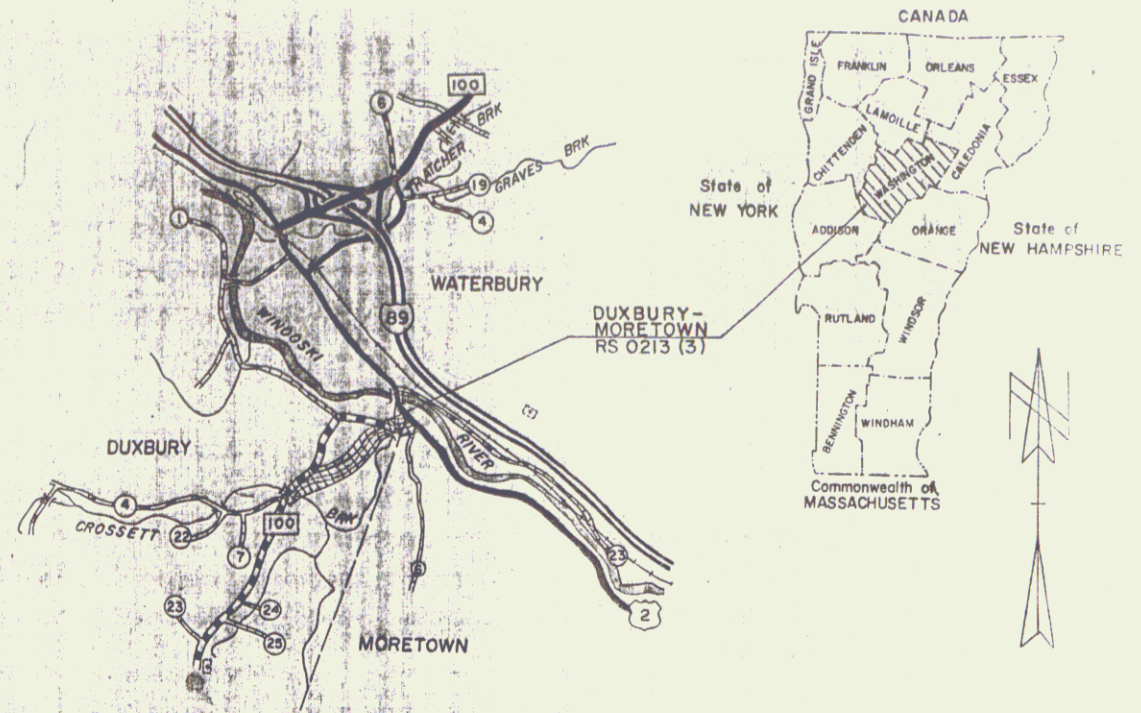


FEDERAL AID SECONDARY

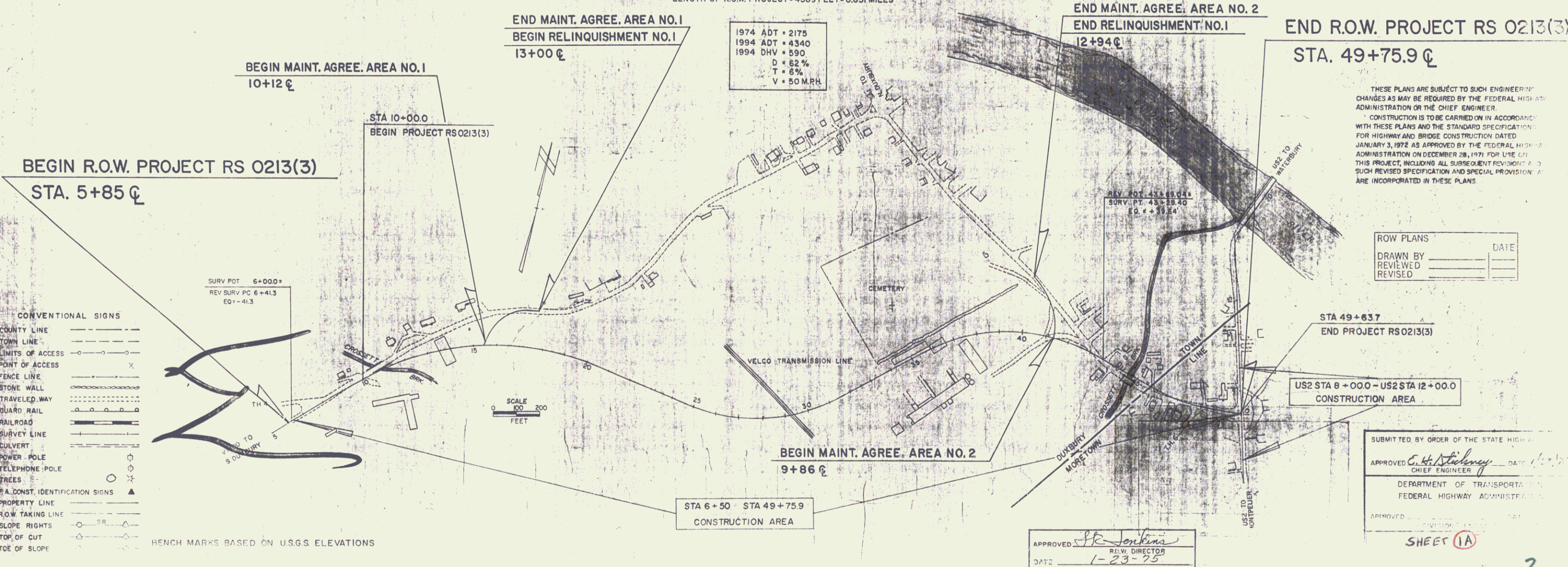
PROPOSED IMPROVEMENT TOWNS OF DUXBURY - MORETOWN COUNTY OF WASHINGTON VERMONT ROUTE 100

BEGINNING AT A POINT ON VT. ROUTE 100, 0.047 MILES NORTHEASTERLY OF THE INTERSECTION OF VT. ROUTE 100 AND TH 4 IN THE TOWN OF DUXBURY AND EXTENDING 0.758 MILES NORTHEASTERLY TO U.S. ROUTE 2 IN THE TOWN OF MORETOWN

LENGTH OF ROADWAY 1003.3 Feet = 0.758 Miles
LENGTH OF BRIDGE
LENGTH OF PROJECT
LENGTH OF R.O.W. PROJECT = 4389 FEET = 0.831 MILES



R.O.W. PLANS



1974 ADT = 2175
1994 ADT = 4340
1994 DHV = 590
D = 62%
T = 6%
V = 50 MPH

THESE PLANS ARE SUBJECT TO SUCH ENGINEERING CHANGES AS MAY BE REQUIRED BY THE FEDERAL HIGHWAY ADMINISTRATION OR THE CHIEF ENGINEER. CONSTRUCTION IS TO BE CARRIED ON IN ACCORDANCE WITH THESE PLANS AND THE STANDARD SPECIFICATIONS FOR HIGHWAY AND BRIDGE CONSTRUCTION DATED JANUARY 3, 1972 AS APPROVED BY THE FEDERAL HIGHWAY ADMINISTRATION ON DECEMBER 28, 1971 FOR USE ON THIS PROJECT, INCLUDING ALL SUBSEQUENT REVISIONS. SUCH REVISED SPECIFICATION AND SPECIAL PROVISIONS ARE INCORPORATED IN THESE PLANS.

- CONVENTIONAL SIGNS
- COUNTY LINE
 - TOWN LINE
 - LIMITS OF ACCESS
 - POINT OF ACCESS
 - FENCE LINE
 - STONE WALL
 - TRAVELED WAY
 - QUARD RAIL
 - RAILROAD
 - SURVEY LINE
 - CULVERT
 - POWER POLE
 - TELEPHONE POLE
 - TREES
 - P.A. CONST. IDENTIFICATION SIGNS
 - PROPERTY LINE
 - R.O.W. TAKING LINE
 - SLOPE RIGHTS
 - TOP OF CUT
 - TOE OF SLOPE

BENCH MARKS BASED ON U.S.G.S ELEVATIONS

ROW PLANS	DATE
DRAWN BY	
REVIEWED	
REVISED	

SUBMITTED BY ORDER OF THE STATE HIGHWAY ENGINEER

APPROVED *E. H. McKinley* CHIEF ENGINEER DATE 1-23-75

DEPARTMENT OF TRANSPORTATION
FEDERAL HIGHWAY ADMINISTRATION

APPROVED _____

SHEET 1A

APPROVED *P. R. Jenkins* R.O.W. DIRECTOR DATE 1-23-75