

INDEX OF SHEETS

1	TITLE
2-3	ALIGNMENT AND TIES
4	TYPICAL SECTIONS
5-7	SUMMARY OF QUANTITIES
8-9	ITEM DETAIL AND DRAINAGE
10-15	EARTHWORK AND GRADE
16-3	BLANK
32-44	R.O.W. DETAIL-MONTPELIER
45	R.O.W. DETAIL-MIDDLESEX
46-56	PLAN AND PROFILE
57	GOULD HILL BRIDGE PLAN SHEET
58-61	UTILITIES
61A-61O	SIGN DETAIL SHEET
62-69	BR SERIES 740 @ 157+75
70-74	BR SERIES 750 @ 208+5.5
75-88	BR SERIES 760 @ 227+26.75
82	BLANK
83	A-61 SOLID ROCK EXCAVATION 8-26-B1R
84	B-5 TYPICAL SLOPE ROUNDING 12-6-71
85	B-11 UNDERDRAIN IN SHATTERED ROCK 12-12-74R
86	C-1 CURBS, BITUMINOUS SIDEWALK 12-16-80R
87	D-2 HEADWALLS, UNDERDRAIN 12-16-76R
88	D-3 GUTTERS 4-27-73R
89	D-4 METAL END SECTIONS AND FLUSH BASINS 7-24-75R
90	D-6 DROP INLET 4-4-73 R
91	D-8 DROP INLET 12-6-71
92	D-9 DROP INLET TOPS 12-6-71
93	D-10 DROP INLET TOPS 12-6-71
94	D-11 CAST IRON GRATE TYPE A 8-24-B1R
95	D-12 CAST IRON GRATE TYPE D 10-6-78R
96	D-16 CAST IRON GRATE TYPE B 11-14-72R
97	E-2 ROAD CONSTRUCTION APPROACH SIGNS 3-4-81R
98	E-6 ON PROJECT SIGNS 4-1-80R
99	E-7 DELINEATION AND BARRICADES 2-12-82 R
100	E-7A BREAKAWAY BARRICADE 4-8-82
100A	E-13 ROUTE MARKER 2-3-82R
101	E-15 REGULATORY SIGNS 7-29-81
102	E-17 REGULATORY SIGNS 1-8-74R
103	E-20 WARNING SIGN 5-16-78R
104	E-23 GUIDE SIGNS 12-29-71
105	E-24A SIGN SUPPORTS 1-8-81R
106	E-25 SIGN SUPPORTS 6-17-81R
107	E-29 SIGN PLACEMENT 8-25-81R
108	E-34 TRAFFIC SIGNAL DETAIL 8-23-82R
109A	E-36 VEHICLE DETECTOR LOOP 8-23-82R
109B	G-1 GUARD RAIL, STEEL BEAM 12-16-80R
110	G-10 GUARD RAIL, STEEL BEAM 12-16-80R
111	G-4 MARKER POSTS 5-25-82R
112	G-11 ANCHOR FOR STEEL BEAM GUARD RAIL 5-29-79R
113	J-1 BOUNDARY MARKERS 6-27-80
114	T-1 TEMPORARY EROSION CONTROL 12-7-76R
115	T-2 TEMPORARY EROSION CONTROL 7-5-72
116	SB-R6-82 BRIDGE RAILING 6-18-82R
117	SCB-DI-75 GENERAL INFORMATION 9-14-81R
118	SCB-D6-75 BRIDGE DETAILS 1-3-79R
119	SCB-D9-71 CURTAIN WALLS 1-27-75R
120-191	CROSS SECTIONS

RECORD PLANS  
 CONTRACT DATED - FEB. 22, 1983  
 CONSTRUCTION BEGAN - FEB. 25, 1983  
 COMPLETED & ACCEPTED - JAN 3, 1985  
 CONTRACTOR - EARTH CONSTRUCTION INC.  
 RESIDENT ENGINEER - JACQUES G. COUTURE  
 RECORD PLANS - JAMES F. MARSCHELL

STATE OF VERMONT  
 AGENCY OF TRANSPORTATION



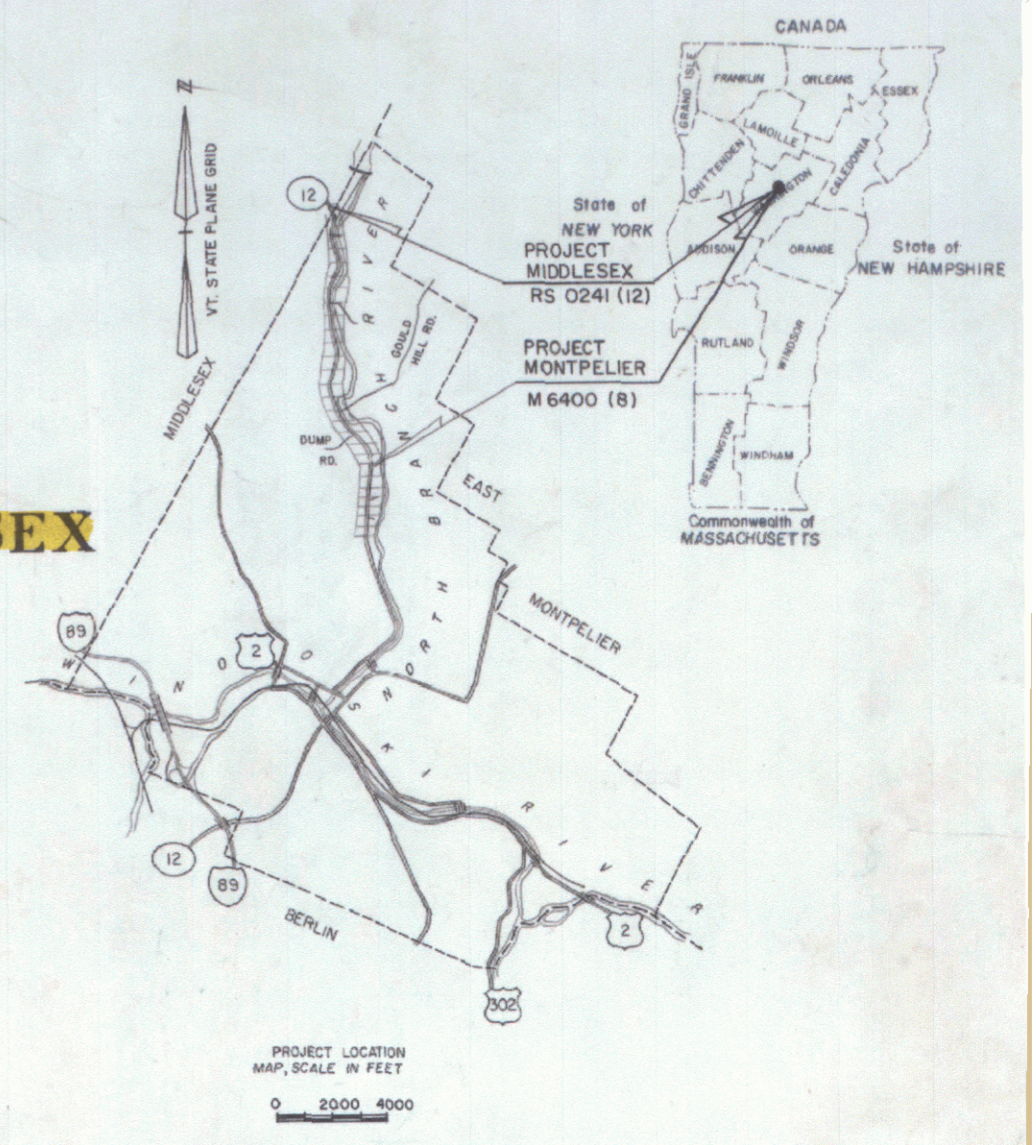
PROPOSED IMPROVEMENT  
 CITY OF MONTPELIER - TOWN OF MIDDLESEX

MATERIAL SUPPLIERS  
 GRAN BACKFILL FOR STRUCTURES - ALEXANDER PIT, MONTPELIER, VT.  
 SUBBASE OF GRAVEL - ALEXANDER PIT, MONTPELIER, VT.  
 PLANT MIX BASE COURSE - COOLEY, BERLIN, VT.  
 BITUMINOUS CONC. PAVEMENT - COOLEY, BERLIN, VT.  
 CONCRETE - ANDERSON, BERLIN, VT.  
 REINFORCING STEEL - PIONEER VALLEY STEEL CO., MEDFORD, MASS.  
 CGMP - ARCH-LANE METAL PRODUCTS, BALSTON SPA, NY.  
 WATER REPELLENT - SONNEBORN BUIL. PRO., MASPETH, NY.  
 SHEET MEMBRANE WATERPROOFING - A.D. ROSSI, ST. J., VT.  
 ACCGMP - LANE METAL PRODUCTS, BALSTON SPA, NY.  
 RCP - FIELD CONCRETE PIPE CO., WAUREGAN, CT.  
 CGMP - LANE METAL PRODUCTS, BALSTON SPA, NY.  
 CAST IRON GRATE - E.L. LEBARON, BROCKTON, MASS.  
 6" UNDERDRAIN - LANE METAL PRODUCTS, BALSTON SPA, NY.  
 GUARD RAIL - Q.W. HUBBEL & SONS, NEW HARTFORD, N.Y.  
 ABS SEWER PIPE, SOLID WALL - ARMO INC. MIDDLETOWN, OHIO  
 SEAMLESS COPPER WATER TUBE - CERRO COPPER PRODUCTS, E. ST. LOUIS, ILL.  
 DUCTILE IRON PIPE, CEMENT LINED - GRIFFIN PIPE PRODUCTS CO., FLORENCE, N.J.  
 EXTENSION SERVICE BOX & CURB STOP - E.J. PRESCOTT INC., MONTPELIER, VT.  
 GATE VALVE & HYDRANT - E.J. PRESCOTT INC., MONTPELIER, VT.  
 PIPE INSULATION - E.J. PRESCOTT INC. MONTPELIER, VT.

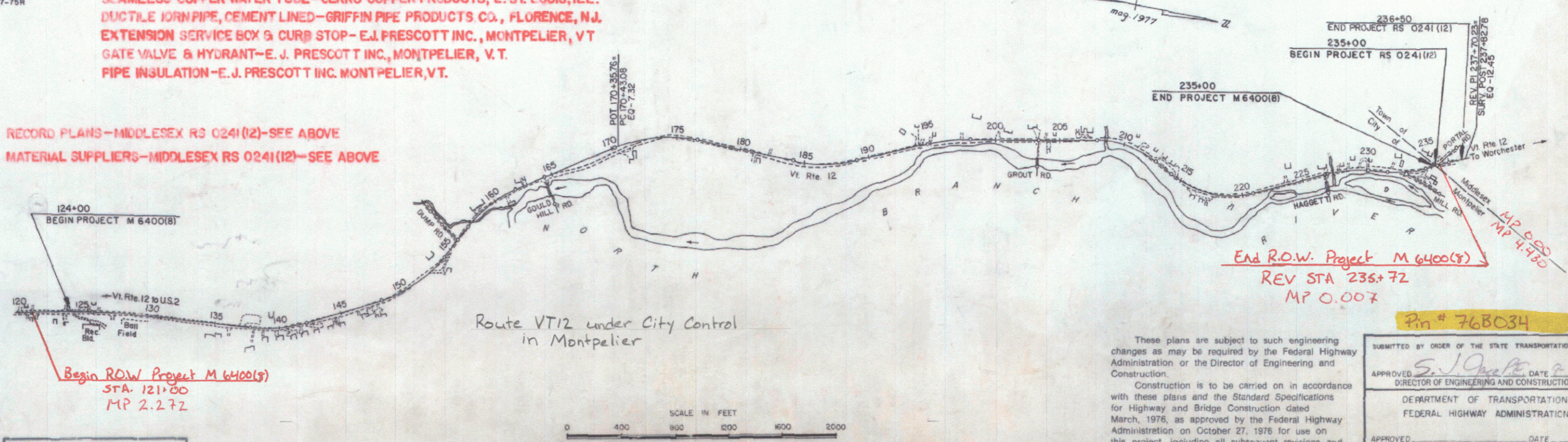
COUNTY OF WASHINGTON

VT. ROUTE 12 - (ELM STREET)

PROJECT MONTPELIER M 6400(8) (VT ROUTE 12) BEGINS AT A POINT ON ELM ST. IN MONTPELIER 2.101 MILES SOUTH OF THE MONTPELIER-MIDDLESEX TOWN LINE AND EXTENDS NORTHERLY 2.101 MILES. MIDDLESEX RS 0241(12) BEGINS ON VT ROUTE 12 AT THE MONTPELIER-MIDDLESEX TOWN LINE AND EXTENDS NORTHERLY 0.028 MILES.  
 1979 ADT = 1970 3000  
 2000 ADT = 2840-4320  
 2000 DHV = 400-570  
 V = 40 MPH  
 LENGTH OF MONTPELIER PROJECT M 6400(8) 11,092.68 FT. = 2.101 MILES  
 LENGTH OF MIDDLESEX PROJECT RS 0241(12) 150 FT. = 0.028 MILES  
 LENGTH OF CONTRACT 11,242.68 FT. = 2.129 MILES



RECORD PLANS - MIDDLESEX RS 0241(12) - SEE ABOVE  
 MATERIAL SUPPLIERS - MIDDLESEX RS 0241(12) - SEE ABOVE

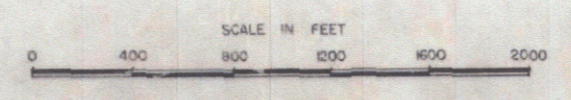


CONVENTIONAL SIGNS

---	COUNTY LINE
---	TOWN LINE
---	LIMITS OF ACCESS
X	POINT OF ACCESS
---	FENCE LINE
---	STONE WALL
---	TRAVELED WAY
---	GUARD RAIL
---	RAILROAD
---	SURVEY LINE
---	CULVERT
○	POWER POLE
○	TELEPHONE POLE
○	TREES
---	CONTROL OF ACCESS
---	PROPERTY LINE
---	R.O.W. TAKING LINE
○	SLOPE RIGHTS
○	TOP OF CUT
○	TOE OF SLOPE

DATUM

VERTICAL	NGVD 1929
HORIZONTAL	N/A



These plans are subject to such engineering changes as may be required by the Federal Highway Administration or the Director of Engineering and Construction.  
 Construction is to be carried on in accordance with these plans and the Standard Specifications for Highway and Bridge Construction dated March, 1976, as approved by the Federal Highway Administration on October 27, 1976 for use on this project, including all subsequent revisions and such revised specifications and special provisions as are incorporated in these plans.

SUBMITTED BY ORDER OF THE STATE TRANSPORTATION BOARD

APPROVED: *S. J. O'Connell* DATE: *5/28/85*  
 DIRECTOR OF ENGINEERING AND CONSTRUCTION

DEPARTMENT OF TRANSPORTATION  
 FEDERAL HIGHWAY ADMINISTRATION

APPROVED: \_\_\_\_\_ DATE: \_\_\_\_\_  
 DIVISION ADMINISTRATOR

PROJECT M 6400(8)  
 RS 0241(12)  
 SHEET 1 OF 19 SHEETS

End R.O.W. Project M 6400(8)  
 REV STA 235+72  
 MP 0.007

Pin # 768034

5/28/1985

STATE OF VERMONT  
AGENCY OF TRANSPORTATION  
RIGHT-OF-WAY PLANS  
ALPHABETICAL INDEX

GRANTOR	SHEET NO.	PARCEL NO.
A		
ALEXANDER, ROBERT C.	15,24	43
ALEXANDER, ALBERT A.	15,24	43
ALEXANDER, ALLEN B.	15,24	43
B		
BARNES, ROBERT B.	9,20	21
BROUSSEAU, FREDERICK L.	12,23	35
BROUSSEAU, PAULINE G.	12,23	35
BROWN, BURTON P.	9,20	22
BROWN, PATRICIA M.	9,20	22
BUTTERFIELD, DAVID	13,20	37
BUTTERFIELD CAROL	13,20	37
BURZYCHI, DONNA L.	14,23	41
BURZYCHI, STANLEY J.	14,23	41
BUSHEY, ROBERTA L.	15,24	43
C		
CAMPBELL, ALICE E.	15,24	43
CHOUNARD, ADELARD A.	16,25	50
CHOUNARD, DORINA	16,25	50
CITRINI, NELLIE B.	16,25	54
COATES, CLIFTON T.	7,19	12
COATES, PHYLLIS J.	7,19	12
CONE, HAROLD ROY	9,20	20
CONE, DOROTHY L.	9,20	20
COTA, D. EILEEN	13,23	39
CITY OF MONTPELIER RECREATION DEPT.	6,18 19	7

GRANTOR	SHEET NO.	PARCEL NO.
D		
DANA CORPORATION	8,19	17
DASHNER, EDITH V.	14,23	40
DEMASI, JOSEPH P.	11,21	30
DEMASI, THERESA M.	11,21	30
DONOVAN, RHODA C.	10,20	26
DUFRESNE, JOHN L.	9,20	19
DUFRESNE, BEVERLY B.	9,20	19
DUQUETTE, IDA F.	14,24	42
E		
ELDRED, ALVIN R.	11,22	31
ELDRED, ARDYS R.	11,22	31
ELDRED, ROBERT A.	12,22	33
ELDRED, CAROL M.	12,22	33
EMMONS, RICHARD A.	11,21	29
EMMONS, JANICE J.	11,21	29
F		
FIELDER, FLOYD R.	16,25	51
FIELDER, ALBERTA M.	16,25	51
FROSTICK, THOMAS	10,21	27
FROSTICK, VERONICA	10,21	27

GRANTOR	SHEET NO.	PARCEL NO.
G		
GAVIN, JAMES A.	8,19	15
GAVIN, HOLLY R.	8,19	15
GOVE, DENNIS E.	12,22	32
GOVE, NANCY E.	12,22	32
GOVE, DONALD E.	12,22	32
GOSS, ARTHUR J.	15,24	49
GOSS, JANIS P.	15,24	49
H		
HEALY, CHARLES E.	5,18	5
HEALY, CARMELITA W.	5,18	5
I		
HUNTINGTON, HENRY D.	6,19	9
J		
INTERSTATE EQUIPMENT & SUPPLIES CO. INC.	5,18 19	6

GRANTOR	SHEET NO.	PARCEL NO.
K		
KOENEMANN, EDWARD J.	5,18	4
KOENEMANN, DONA M.	5,18	4
L		
LAGUE, INC.	17,19	55
LUPIEN, LEON	12,23	34
LUPIEN, GRACE L.	12,23	34
M		
JANEWAY, EDWARD G., JR.	10,20	25
JANEWAY, CLAUDE M.	10,20	25
JANGRAW, JOHN J.	16,25	52
JANGRAW, BETTE E.	16,25	52
JOHNSON, LINDA	8,19	14

GRANTOR	SHEET NO.	PARCEL NO.
N		
NICHOLS, CHARLES B., JR.	8,19	18
NICHOLS, HELEN A.	8,19	18
NICHOLSON, ELIZABETH L.	9,20	23
NICHOLSON, PETER A.	9,20	23
NIES, ALEXANDER	10,21	28
O		
M		
MAGOON, WENDELL A.	16,25	53
MAGOON, LILLIAN M.	16,25	53
MATKOWSKI, GEORGE T.	7,19	13
MATKOWSKI, JEWELL E.	7,19	13
MCDONALD, ROBERT W.	15,24	47
MCDONALD, LYNN B.	15,24	47
MEARS, STEPHEN A.	15,24	48
MEARS, CRISTINE GOSS	15,24	48
MERCHANT, CAROL V.	15,24	45
MERCHANT, MICHAEL A.	15,24	45
MERRILL, BETTY W.	5,18	3
MERRILL, RAYMOND E.	5,18	3

MADE BY F. T. JORDAN DATE 12-18-81

CHECKED BY B. L. STANCLIFF DATE 12-18-81

MAY 28 1985

PROJECT MONTPELIER

NO. M 6400 (8)

SHEET 3 OF 25

STATE OF VERMONT  
DEPARTMENT OF HIGHWAYS  
RIGHT-OF-WAY PLANS  
ALPHABETICAL INDEX

GRANTOR	SHEET NO.	PARCEL NO.
P		
PEPIN, BRENDA	5,18	2
PEPIN, ROLAND	5,18	2
PERRY, CHRISTINE BROWN	5,25 21	44
PHILLIPS, CAROL W.	6,18	8
PHILLIPS, CHARLES S.	6,18	8
Q		
R		
RELATION, DOROTHY M.	15,24	46
RELATION, LESLIE A.	15,24	46
ROBY, LINDA M.	13,23	36
ROBY, STEPHEN E.	13,23	36
ROOD, ROBERT C.	8,19	16
ROOD, RUTH A.	8,19	16

GRANTOR	SHEET NO.	PARCEL NO.
S		
SHIU, KAYAU	6,7,19	10
STATE OF VERMONT (FORMERLY FLANDERS, ROY H. & REBECCA)	5,25	1
SHIU, KAYAU - LESSOR	17,19	60
T		
THE ASSOCIATES, INC. d/b/g ALPINE ESTATES	8,9,20	17
U		
V		
W		
WOODBURY ASSOCIATES	7,19	11
WOODBURY ASSOCIATES - LESSEE	17,19	60

GRANTOR	SHEET NO.	PARCEL NO.
X		
Y		
Z		

GRANTOR	SHEET NO.	PARCEL NO.
---------	-----------	------------

GRANTOR	SHEET NO.	PARCEL NO.
---------	-----------	------------

MAY 28 1985

MADE BY B. STANCLIFF DATE 12-18-81

CHECKED BY E.T. JORDAN DATE 12-18-81

PROJECT MONTPELIER  
NO. M 6400 (8)  
SHEET 4 OF 25

STATE OF VERMONT  
AGENCY OF TRANSPORTATION  
RIGHT-OF-WAY PLANS  
DETAIL SHEET

TABLE OF PROJECT PROPERTY ACQUISITION

PARCEL NO.	GRANTOR	SHEET NO.	BEGINNING STATION	ENDING STATION	TAKING	REM.	RIGHTS	TITLE TAKEN	DATE	TOWN OR CITY RECORDED	BK.	PG.	REMARKS
1	STATE OF VERMONT <i>Flanders</i>	25						WD	11-13-81	MONTPELIER	168	408,410	FORMERLY FLANDERS, ROY H. & REBECCA A.
2	PEPIN, ROLAND & BRENDA	18	121+44 RT. 121+44 RT.	121+50 RT.			CULVERT (P) DITCH (P)	WDCE	9-24-82	MONTPELIER	173	243-4	
3	MERRILL, RAYMOND E. & BETTY W.	18	121+28 LT. 121+60 LT. 121+81 LT. 121+84 LT. 121+84 LT. REV. 122+40 LT.	REV. 122+50 LT. REV. 122+10 LT. REV. 122+40 LT. REV. 122+50 LT.	0.01A±		DRIVE (T) CULVERT (P) DITCH (P) CULVERT (P) CULVERT (P) DITCH (P)	WDCE	8-26-82	MONTPELIER	173	189-90	260 S.F.± 14' PAVED 175 S.F.± TO INSTALL HEAD WALL
3A		18	121+44 RT. REV. 121+60 RT.	121+50 RT.			CULVERT (P) DITCH (P) DRIVE (T)	WDCE	9-16-82	MONTPELIER	173	231-2	Release 8-11-82 Not recorded 22' GRAVEL
4	KOENEMANN, EDWARD J. & DONA M.	18	121+44 RT. 121+44 RT. REV. 121+60 RT.	121+50 RT.			CULVERT (P) DITCH (P) DRIVE (T)	WDCE	9-16-82	MONTPELIER	173	231-2	Release 8-11-82 Not recorded 22' GRAVEL
5	HEALY, CHARLES E. & CARMELITA M.	18	REV. 122+59 LT. REV. 123+62 LT.	REV. 124+00 LT.	0.01A±		DRIVE (T)	WDCE	7-8-82	MONTPELIER	173	55-5	635' S.F.± 16' GRAVEL
6A	INTERSTATE EQUIPMENT & SUPPLIES CO., INC.	18, 19	REV. 123+97 LT. REV. 124+85 LT.	REV. 125+02 LT.	0.01A±		DRIVE (T)	WDCE	7-9-82	MONTPELIER	173	99-100	515 S.F.± 18' GRAVEL
6B			REV. 126+47 LT. REV. 126+47 LT. REV. 126+47 LT. REV. 126+47 LT.	REV. 130+40 LT. REV. 130+40 LT. REV. 130+40 LT. REV. 130+40 LT.	0.08A±		SLOPE (P) 0.27A± CONST. EASE. (T) 0.09A± DITCH (P) 0.05A± CULVERT (P)						3580 S.F.± 3850 S.F.± 1880 S.F.±
TOTAL					0.09A±								

TABLE OF REVISIONS

REVISION NO.	SHEET NO.	DESCRIPTION OF REVISION	DATE	MADE BY	APPROVED BY
1	14, 25	Parcel 54 A Citini, Revised taking area to read, Rev. 230+62 Rt. - Rev. 230+62 Rt., 0.18 A±, All R.T. & I. As per c.o. # 5164	1-12-82	NWJ	T.P.M.
2	14, 25	Parcel 53 A Magoon, Revised taking area to read, Rev. 235+07 Rt. - Rev. 230+62 Rt., 0.03 A±, All R.T. & I. Added slope Rt. (P). As per c.o. # 5165	1-12-82	NWJ	T.P.M.
3	14, 25	Parcel 52 A Jangraw, Revised taking area to read, Rev. 218+96 Rt. - Rev. 228+10 Rt., 0.01 A±, All R.T. & I. Added slope Rt. (P). As per c.o. # 5166	1-12-82	NWJ	T.P.M.
4	14, 25	Parcel 51 A Fuller, Added slope Rt. (P). As per c.o. # 5167	1-12-82	NWJ	T.P.M.
5	14, 24	Parcel 42 A Duquette, Added slope Rt. (P). As per c.o. # 5168	1-12-82	NWJ	J.P.
6	13, 23	Parcel 38 A Hess, Revised taking area to read, Rev. 189+10 Rt. - Rev. 200+85 Rt., 375 S.F.±. Added slope Rt. (P). As per c.o. # 5169	1-12-82	NWJ	J.P.
7	13, 23	Parcel 37 A Butterfield, Revised taking area to read, Rev. 185+58 Rt. - Rev. 189+10 Rt., 0.69 A±. Added slope Rt. (P). As per c.o. # 5170	1-12-82	NWJ	J.P.
8	13, 23	Parcel 36 A Ruby, Revised taking area to read, Rev. 185+34 Rt. - Rev. 185+58 Rt., 100 S.F.±. As per c.o. # 5171	1-12-82	NWJ	J.P.
9	12, 23	Parcel 35 Brasseur, Deleted parcel 35 A. Changed parcel 35 B to 35. As per c.o. # 5172	1-11-82	NWJ	J.P.
10	13, 23	Parcel #38 Hess, Deleted parcel from plans Per Co. # 5182	2-2-82	JDP	T.P.M.
11	10	Parcel #28 Nies, Change ending sta. on ditch from 120+52 Lt. to 129+62 Lt. Per c.o. # 5197	2-2-82	JDP	T.P.M.
12	14, 24	Parcel #42 Duquette, Deleted 2 drives & added new drive at sta. 217+84 Rt. also added drain rt. at 218+00 Rt. & added rts at 217+82 Rt. & 218+35 Rt. Per Co. # 5200	2-11-82	JDP	T.P.M.
13	14, 24	Parcel #40 Dastnar, Corrected name spelling on layout. Added right to install (T) at Rev. 204+60 Lt. - Rev. 204+75 Lt. Per c.o. # 5201	2-16-82	NWJ	T.P.M.

MADE BY: NBB DATE 12-15-81  
CHECKED BY: BLS DATE 12-18-81

DR RT - DRAINAGE RIGHT  
DIT RT - DITCHING RIGHT  
CH RT - CHANNEL RIGHT  
DRIVE RT - DRIVE RIGHT  
CUL RT - CULVERT RIGHT  
D - DEMOLITION OR REMOVAL  
W - WATER SOURCES

PRESENT R.O.W.  
--- TAKING WITHOUT ACCESS  
--- TAKING WITHOUT ACCESS ALONG PROPERTY LINES  
--- TAKING WITH ACCESS  
(P) PERMANENT EASEMENT  
(T) TEMPORARY EASEMENT

LEGEND  
--- CONST. EASE. --- CONST. EASEMENT  
--- SR --- SLOPE RIGHTS  
--- P --- PROPERTY LINE  
--- Δ --- TOP OF CUT  
--- ○ --- TOP OF SLOPE

APPROVED: Thomas P. Moore DATE 12-18-81  
CHIEF OF PLANS & TITLES

MAY 28 1985  
PROJECT MONTPELIER  
NO. M 6400 (8)  
SHEET 5 OF 25

STATE OF VERMONT  
AGENCY OF TRANSPORTATION  
RIGHT-OF-WAY PLANS  
DETAIL SHEET

TABLE OF PROJECT PROPERTY ACQUISITION

PARCEL NO.	GRANTOR	SHEET NO.	BEGINNING STATION	ENDING STATION	TAKING	REM.	RIGHTS	TITLE TAKEN	DATE	TOWN OR CITY RECORDED	BK.	PG.	REMARKS
7	CITY OF MONTPELIER	18, 19	REV. 127+17 RT.	REV. 136+00 RT.			DRIVE (T)	RAW		MONTPELIER			PAVED APPROACH
			REV. 135+35 RT. REV. 136+85 RT. REV. 136+19 RT. REV. 136+35 RT. REV. 136+80 RT. REV. 136+84 RT.	REV. 136+88 RT. REV. 136+90 RT.				CULVERT (P) CULVERT (P) DRIVE (T) CONST. EASE. (T) 2305 S.F.± SLOPE (T) 105 S.F.± CULVERT (P)	AGREE.				
8	PHILLIPS, CHARLES S. & CAROL W.	18	REV. 125+02 LT.	REV. 126+47 LT.	0.02A±			CAN		MONTPELIER			950 S.F.± CEDAR RAIL FENCE
			REV. 125+02 LT. REV. 125+47 LT. REV. 126+24 LT. REV. 126+30 LT.	REV. 126+47 LT. REV. 126+47 LT.				SLOPE (T) 0.02A± DRIVE (T) DRIVE (T) DITCH (P) 855 S.F.±	WOOD				
9	HUNTINGTON, HENRY D.	19	REV. 130+40 LT.	REV. 136+40 LT.	0.14A±					MONTPELIER	173	140-142	2845 S.F.±
			REV. 130+40 LT. REV. 130+40 LT. REV. 130+40 LT. REV. 130+65 LT. REV. 136+22 LT.	REV. 136+40 LT. REV. 136+40 LT. REV. 136+40 LT. REV. 136+09 LT.				SLOPE (P) 0.58A± CONST. EASE. (T) 0.18A± DITCH (P) 0.07A± CULVERT (P) DRIVE (T)	WOOD	8-3-82			
10A	SHIU, KAYAU	19	REV. 136+40 LT.	REV. 137+40 LT.	0.02A±					MONTPELIER	176	8-10	800 S.F.±
			REV. 136+40 LT. REV. 136+40 LT. REV. 136+84 LT.	REV. 137+40 LT. REV. 137+40 LT. REV. 137+40 LT.				SLOPE (T) 25 S.F.± CONST. EASE. (T) 0.02A± CULVERT (P)	OPTION	9-9-82			
10B			REV. 137+40 LT.	REV. 137+90 LT.	0.01A±								400 S.F.±
			REV. 137+40 LT. REV. 137+40 LT. REV. 137+65 LT.	REV. 137+90 LT. REV. 137+90 LT.				CONST. EASE. (T) 0.01A± CULVERT (P) DRIVE (T)					

TABLE OF REVISIONS

REVISION NO.	SHEET NO.	DESCRIPTION OF REVISION	DATE	MADE BY	APPROVED BY
14	12	Parcel # 34 Lupien, Added All RT. 240 S.F.±, Slope (P) at Rev. 114+05 Rt. - Rev. 115+34 Rt. Per. C.O. # 5203	2-16-82	NWT	T.P.M.
15	13	Parcel # 36 Ruby, Added All RT. 25 S.F.±, Slope (P) at Rev. 185+34 Rt. - Rev. 185+53 Rt. Per. C.O. # 5204	2-16-82	NWT	T.P.M.
16	13	Parcel # 37 Butter-Roll, Changed Slope Right (P) to All RT. 11, 300 S.F.±, Slope (P) at Rev. 115+15 Rt. - Rev. 115+60 Rt. Per. C.O. # 5205	2-16-82	NWT	T.P.M.
17	14	Parcel # 42 Duquette, Changed Slope Right (P) to All RT. 11, 504 S.F.±, Slope (P) at Rev. 201+20 Rt. - Rev. 210+80 Rt. Per. C.O. # 5206	2-16-82	NWT	T.P.M.
18	14	Parcel # 51 Keller, Changed Slope Right (P) to All RT. 11, 32 S.F.±, Slope (P) at Rev. 228+30 Rt. - Rev. 228+44 Rt. Per. C.O. # 5207	2-17-82	NWT	T.P.M.
19	16	Parcel # 52 Jangraw, Changed Slope Right (P) to All RT. 11, 300 S.F.±, Slope (P) at Rev. 228+14 Rt. - Rev. 228+07 Rt. Per. C.O. # 5208	2-17-82	NWT	T.P.M.
20	16	Parcel # 53 Magann, Changed Slope Right (P) to All RT. 11, 0.02 AS 750 S.F.±, Slope (P) at Rev. 228+07 Rt. - Rev. 230+63 Rt. Per. C.O. # 5209	2-17-82	NWT	T.P.M.
21	14, 22	Parcel # 29 Emmons, Added Ditch (P) & Drainage (P) Rights at Rev. 171+71 Rt. - Rev. 171+78 Rt. Per. C.O. # 5213	2-18-82	NWT	EFF
22	22	Parcel # 30 Demasi, Changed Const. Ease. (P) to Const. Eas. (P) opposite Rev. 171+50 Lt. Per. C.O. # 5214	2-18-82	NWT	EFF
23	10, 21	Parcel # 28 Nick, Changed take area ending station from Rev. 149+89 Rt. to Rev. 149+77 Rt. Per. C.O. # 5215	2-18-82	NWT	EFF
24	12	Parcel # 32 Gove, Changed Slope (P) stations from 186+25 Rt. - 187+60 Rt. to Rev. 186+25 Rt. - Rev. 187+60 Rt.	2-18-82	NWT	EFF
25	9, 20	Parcel # 22.B BROWN, Added Culvert And Took CUL. Rt. (P) & DR. Rt. (P) Per Revised Design & C.O. # 5223	2-23-82	BAM	T.P.M.
26	9, 20	Parcel # 23 NICHOLSON, Changed Culvert & CUL. Rt. (P) Beginning Sta. Per. C.O. # 5224	2-23-82	BAM	T.P.M.

MADE BY: NBB DATE 12-18-81  
CHECKED BY: RLS DATE 12-18-81

DR RT - DRAINAGE RIGHT  
DIT RT - DITCHING RIGHT  
CH RT - CHANNEL RIGHT  
DRIVE RT - DRIVE RIGHT  
CUL. RT - CULVERT RIGHT  
D - DEMOLITION OR REMOVAL  
W - WATER SOURCES

PRESENT R.O.W.  
TAKING WITHOUT ACCESS  
TAKING WITHOUT ACCESS ALONG PROPERTY LINES  
TAKING WITH ACCESS  
(P) PERMANENT EASEMENT  
(T) TEMPORARY EASEMENT

LEGEND  
CONST. EASE - CONST. EASEMENT  
SR - SR - SLOPE RIGHTS  
P - P - PROPERTY LINE  
- Δ - Δ - TOP OF CUT  
- O - O - TDE OF SLOPE

APPROVED: *Thomas Mass* DATE: \_\_\_\_\_  
CHIEF OF PLANS & TITLES

MAY 28 1985

PROJECT: MONTPELIER  
NO. M 6400(S)  
SHEET 6 OF 25

STATE OF VERMONT  
AGENCY OF TRANSPORTATION  
RIGHT-OF-WAY PLANS  
DETAIL SHEET

TABLE OF PROJECT PROPERTY ACQUISITION

PARCEL NO.	GRANTOR	SHEET NO.	BEGINNING STATION	ENDING STATION	TAKING	REM.	RIGHTS	TITLE TAKEN	DATE	TOWN OR CITY RECORDED	BK.	PG.	REMARKS
PARCEL 10 CONTINUED FROM PREVIOUS SHEET													
10C			REV. 137+80 LT.	REV. 141+87 LT.	0.13A±	✓	SLOPE (P) 0.4A± CONST. EASE. (T) 0.09A± CULVERT (P)						4000 S.F.±
			REV. 137+80 LT.	REV. 141+87 LT.									1635 S.F.±
10D			REV. 137+80 LT.	REV. 141+87 LT.	0.01A±	✓	DITCH (P) 0.04A± CULVERT (P)						SIGN POST
			REV. 138+60 LT.	REV. 141+87 LT.									600 S.F.±
			REV. 138+97 LT.	REV. 141+87 LT.	0.01A±	✓	SLOPE (P) 0.08A± CONST. EASE. (T) 0.01A± DITCH (P) 250 S.F.±						3800 S.F.±
			REV. 140+30 LT.										800 S.F.±
				TOTAL	0.17A±								
11	WOODBURY ASSOCIATES	19	REV. 136+84 RT.	REV. 138+00 RT.			CULVERT & DITCH (P) CONST. EASE. (T) 0.02A± SLOPE (T) 300 S.F.± DRIVE (T)	WOOD		MONTPELIER			1000 S.F.± 12' GRAVEL
12	COATES, CLIFTON T. & PHYLLIS J.	19	REV. 138+77 RT.				DRIVE (T)	REL.					14' GRAVEL
13	MATKOWSKI, GEORGE T. & JEWELL E.	19	REV. 139+85 RT.	REV. 140+43 RT.			SLOPE (T) 0.02A± DRIVE (T)	AGREE.					930 S.F.± 20' GRAVEL

TABLE OF REVISIONS

REVISION NO.	SHEET NO.	DESCRIPTION OF REVISION	DATE	MADE BY	APPROVED BY
27	10, 20	Parcel #25 JANEWAY, Changed Culvert, Deleted CUL RT. (P) - DIT. RT. (P) ! Revised Slope Area. Per Revised Design f Co. # 5225	2-23-82	B.R.M.	T.P.M.
28	11, 22	Parcel #31 Eldred, Moved drive from Rev. 182-15 Lt. to 183+52 Lt. Added CUL. Rt. (P) at Rev. 183+32 - Rev. 183+70 Lt. Per C.O. # 5250	3-22-82	N.W.J.	T.P.M.
29	12, 22	Parcel #32 Gore, Added CUL. Rt. (P) at Rev. 188+45 Rt. - Rev. 189+50 Rt. Added Dr. Rt. (P) at Rev. 188+50 Rt. Per C.O. # 5252	3-22-82	N.W.J.	T.P.M.
30	11, 22	Parcel #31 Eldred, Added CUL. Rt. (P) at Rev. 187+30 Lt. - Rev. 187+30 Lt. Added CUL. Rt. (P) at Rev. 187+00 Lt. - 187+07 Lt. Changed ending Sta. to read Rev. 187+36 and running distance from 960' to 967'. Per C.O. # 5253	3-22-82	N.W.J.	T.P.M.
31	11, 22	Parcel #30 DeMassi, Changed name spelling from DEMASSI to DeMASSI. Per C.O. # 5272	3-22-82	N.W.J.	T.P.M.
32	9	Parcel #22 Brown, Changed total take from #03 Rt. to 0.13 Rt. Per C.O. # 5273	3-22-82	N.W.J.	T.P.M.
33	22	Parcel #32 Gore, Added 'save' to 24' Ash tree at Rev. 181+50 Rt. Per Co # 5274	3-22-82	N.W.J.	T.P.M.
34	9	Parcel #22 Brown, Changed DIT & Dr. (P) at Rev. 189+55 Rt. to CUL, DIT., & Dr. (P). Per Co # 5277	3-22-82	N.W.J.	T.P.M.
35	9	Parcel #17 Dana Corp, Changed file taken from WD to WDCO. Per C.O. # 5279	3-22-82	N.W.J.	T.P.M.
36	20	Parcel #22 Brown, Changed 'L' tree at Rev. 152+20 68' Rt. from Ash to Butternut and added 'save' Per C.O. # 5281	3-22-82	N.W.J.	T.P.M.
37	9, 20	Parcel #22 Brown, Added CUL. Rt. (P) at Rev. 143+87 - Rev. 143+97 Rt. Added Dr. Rt. (P) at Rev. 143+77 Rt. Per C.O. # 5275	3-22-82	N.W.J.	T.P.M.
38	10	Parcel #25 Janeway, Added Right to Install new waterline at Rev. 161+05 - Rev. 162+05 Lt. Per C.O. # 5290	3-22-82	N.W.J.	T.P.M.

MADE BY: WBB DATE: 12-17-81  
CHECKED BY: RLS DATE: 12-18-81

DR RT - DRAINAGE RIGHT  
DT RT - DITCHING RIGHT  
CH RT - CHANNEL RIGHT  
DRIVE RT - DRIVE RIGHT  
CUL RT - CULVERT RIGHT  
⊙ - DEMOLITION OR REMOVAL  
W - WATER SOURCES

----- PRESENT R.O.W.  
/// - - - - TAKING WITHOUT ACCESS  
/// P - - - - TAKING WITHOUT ACCESS ALONG PROPERTY LINES  
----- TAKING WITH ACCESS  
(P) PERMANENT EASEMENT  
(T) TEMPORARY EASEMENT

LEGEND  
--- CONST. EASE. --- CONST. EASEMENT  
--- SR --- SR SLOPE RIGHTS  
P - - - - P - - - - PROPERTY LINE  
- Δ - Δ - Δ - TOP OF CUT  
○ - ○ - ○ - TIE OF SLOPE

APPROVED: James P. [Signature] DATE: 12-18-81  
CHIEF OF PLANS & TITLES

MAY 28 1985

PROJECT: MONTPELIER  
NO. M 6400 (8)  
SHEET 7 OF 25

STATE OF VERMONT  
AGENCY OF TRANSPORTATION  
RIGHT-OF-WAY PLANS  
DETAIL SHEET

TABLE OF PROJECT PROPERTY ACQUISITION

PARCEL NO.	GRANTOR	SHEET NO.	BEGINNING STATION	ENDING STATION	TAKING	REM.	RIGHTS	TITLE TAKEN	DATE	TOWN OR CITY RECORDED	BK.	PG.	REMARKS
14	JOHNSON, LINDA	19	REV. 140+45 RT. REV. 140+75 RT.	REV. 141+40 RT.			SLOPE (T) 0.03A± DRIVE (T)	AGREE.					1300 S.F.± 16' GRAVEL
15	GAVIN, JAMES A. & HOLLY R.	19	REV. 141+40 RT. REV. 141+65 RT.	REV. 142+30 RT.			SLOPE (T) 0.02A± DRIVE (T)	AGREE.					690 S.F.± 12' PAVED
16	ROOD, ROBERT C. & RUTH A.	19	REV. 142+10 RT.				DRIVE (T)	REL.					18' PAVED
17	DANA CORPORATION MORRILL, ARTHUR E. D/B/A ALPINE ESTATES	19,20	REV. 142+37 LT. REV. 142+37 LT. REV. 142+37 LT. REV. 142+84 LT. REV. 142+97 LT.	REV. 150+10 LT. REV. 150+10 LT. REV. 150+35 LT. REV. 150+42 LT.		0.32A±	DITCH (P) 0.09A± SLOPE (P) 1.38A± CONST. EASE. (T) 0.22A± DRIVE (T) CULVERT (P)	CAND WOOD		MONTPELIER			3865 S.F.±  20' GRAVEL
18	NICHOLS, CHARLES B., JR. & HELENA.	19,20	REV. 144+28 RT.				DRIVE (T)	REL.					20' PAVED

TABLE OF REVISIONS

REVISION NO.	SHEET NO.	DESCRIPTION OF REVISION	DATE	MADE BY	APPROVED BY
37	11,21	Parcel # 21 Emmons, Added Cul. (R) at Rev. 142+38 Rt. - Rev. 142+42 Rt. Added Dr. R. (P) at Rev. 142+38 Rt. Added Cul. & Dr. R. (P) at Rev. 170+50 Rt. Per C.O. # 5297	3-22-82	NWJ	T.P.M.
40	11,22	Parcel # 11 WOODBURY ASSOC. & Parcel # 32 COVE ET AL., Added Remove To Trees At Sta. 137+40 Rt., 138+15 Rt. & 181+45 Rt. Per C.O. # 5300	3-26-82	BAM	T.P.M.
41	13	Parcel # 37 BUTTERFIELD, Changed Total Take From 0.11A± To 0.10A± Per C.O. # 5305	4-6-82	BAM	T.P.M.
42	11	Parcel # 31 ELDRED, Changed Ditch (R) (P) Ending Sta. From 182+10 Lt. To 183+32 Lt. & Ditch (R) (P) Beginning Sta. From 182+40 Lt. To 183+70 Lt. ALL Sta. Revised. Per C.O. # 5312	4-6-82	BAM	T.P.M.
43	19,20	Parcel # 16, 19, 20, Added Save To Trees At Sta. 193+05 Rt., 193+27 Rt., 194+70 Rt., 194+80 Rt., 194+85 Rt., 194+88 Rt., 197+50 Rt. And Added Save To Mirror At Sta. 197+45 Rt. Per C.O. # 5313	4-6-82	BAM	T.P.M.
44	8,19,20	Parcel 17, Deleted The Assoc. Inc. From Title & added Morrill, A.E. Per C.O. # 5326	4-13-82	SWT	T.P.M.
45	6	Parcel # 10B, Shire: deleted slope at Sta. Rev. 137+40 Lt. to Sta. Rev. 137+70 Lt., also changed take from 275 S.F. to 700 S.F. to agree with legend per C.O. # 5346	4-29-82	SWT	T.P.M.
46	18	Parcel # 9 Alpine, Changed Cherry tree to crab and added oak. Also added save to 3' pine lot at Sta. 126+00 Lt. - Rev. 126+15 Lt. Per C.O. # 5341	4-27-82	NWJ	T.P.M.
47	7	Parcel 10 D Shire, Added (P) to slope At. Also changed const. ease. (P) area from 0.01 A±, 400 S.F. to 0.01 A±, 600 S.F. Per C.O. # 5342	4-27-82	NWJ	T.P.M.
48	6,7	Parcel # 10 A & D Shire, On 10A changed take area from 0.01 A±, 450 S.F. to 0.02 A±, 800 S.F. Also changed slope area from 0.02 A±, 1000 S.F. to 28 S.F. On 10D changed take total from 0.16 A± to 0.11 A± Per C.O. # 5348	4-27-82	NWJ	T.P.M.
49	18	Parcel # KOENEMANN Added "save" to 18' w/d at station 122+50 Rt. Per C.O. # 5343	5-12-82	Kdp	T.P.M.
50	18	Parcel # 5 HEALY Added "save" to 8' cut at Sta. 123+40 Lt. and 36" Pine at Sta. 124+00 Lt. Per C.O. # 5344	5-12-82	Kdp	T.P.M.

MADE BY: RBB DATE 12-17-81  
CHECKED BY: RLS DATE 12-18-81

DR RT - DRAINAGE RIGHT  
DIT RT - DITCHING RIGHT  
CH RT - CHANNEL RIGHT  
DRIVE RT - DRIVE RIGHT  
CUL. RT - CULVERT RIGHT  
⊙ - DEMOLITION OR REMOVAL  
W - WATER SOURCES

PRESENT R.O.W.  
--- TAKING WITHOUT ACCESS  
--- TAKING WITHOUT ACCESS ALONG PROPERTY LINES  
--- TAKING WITH ACCESS  
(P) PERMANENT EASEMENT  
(T) TEMPORARY EASEMENT

LEGEND  
--- CONST. EASE. --- CONST. EASEMENT  
SR --- SR --- SLOPE RIGHTS  
P --- P --- PROPERTY LINE  
--- Δ --- Δ --- TOP OF CUT  
--- ○ --- ○ --- TOE OF SLOPE

APPROVED Thomas P. Hill DATE 12-18-81  
CHIEF OF PLANS & TITLES

MAY 28 1985

PROJECT MONTPELIER  
NO. M 6400(8)  
SHEET (8) OF 25

STATE OF VERMONT  
AGENCY OF TRANSPORTATION  
RIGHT-OF-WAY PLANS  
DETAIL SHEET

TABLE OF PROJECT PROPERTY ACQUISITION

PARCEL NO.	GRANTOR	SHEET NO.	BEGINNING STATION	ENDING STATION	TAKING	REM.	RIGHTS	TITLE TAKEN	DATE	TOWN OR CITY RECORDED	BK.	PG.	REMARKS
19	DUFRESNE, JOHN L. & BEVERLY B.	20	REV. 144+55 RT.				DRIVE (T)	RELEASE					20' PAVED
20	CONE, HAROLD ROY & DOROTHY L.	20	REV. 146+32 RT. REV. 147+27 RT.				DRIVE (T) DRIVE (T)	RELEASE					12' PAVED 16' PAVED
21	BARNES, ROBERT B.	20	REV. 147+86 RT. REV. 148+46 RT.	REV. 148+60 RT.			DRIVE (T) CONST. EASE. (T) (40 S.F.)	AGREE.					16' PAVED
22 A	BROWN, BURTON P. & PATRICIA M.	20, 21	REV. 150+05 RT. REV. 148+60 RT. REV. 148+60 RT. REV. 148+76 RT. REV. 149+95 RT. REV. 153+47 RT. REV. 154+37 RT. REV. 148+87 RT. REV. 148+97 RT. REV. 152+45 RT.	REV. 154+40 RT. REV. 151+92 RT. REV. 154+93 RT. REV. 148+75 RT. REV. 154+95 RT. REV. 155+00 RT. REV. 154+81 RT. REV. 148+97 RT. REV. 152+45 RT.	0.08 A±		CONST. EASE. (T) (0.07 A±) SLOPE (T) (0.40 A±) CUL. (P) ✓ DR. (P) ✓ CUL., DIT. & DR. (P) ✓ DRIVE (T) ✓ CONST. EASE. (T) (0.03 A±) CUL. (P) ✓ DR. (P) ✓ DRIVE (T) ✓	WOOE	8-11-82	MONTPELIER	173	163-64	3500 S.E.± 3100 S.E.±  1100 S.E.± (TO REMOVE 8" VCP)
22 B			REV. 155+00 RT. REV. 155+00 RT.	REV. 159+18 RT. REV. 159+45 RT.	0.05 A±		SLOPE (T) (0.14 A±)						2300 S.E.±
			REV. 155+40 RT. REV. 157+75 RT. REV. 157+60 RT. REV. 158+04 RT.	REV. 160+05 RT. REV. 160+00 RT. REV. 159+04 RT. REV. 160+00 RT.			CONST. EASE. (T) (0.14 A±) DR. (P) ✓ DR. (P) ✓ DR. (P) ✓						
				TOTAL	0.13 A±								
23	NICHOLSON, PETER A. & ELIZABETH L.	20	REV. 150+65 LT. REV. 150+35 LT. REV. 153+75 LT. REV. 153+95 LT. REV. 155+38 LT.	REV. 151+20 LT. REV. 152+10 LT. REV. 155+82 LT. REV. 155+65 LT. REV. 155+60 LT.			SLOPE (T) (75 S.F.) CONST. EASE. (T) (0.02 A±) SLOPE (T) (0.07 A±) CONST. EASE. (T) (0.03 A±) CUL. (P) ✓	WOOE	9-10-83	MONTPELIER	173	215-6	850 S.E.± 3050 S.E.± 1500 S.E.±

TABLE OF REVISIONS

REVISION NO.	SHEET NO.	DESCRIPTION OF REVISION	DATE	MADE BY	APPROVED BY
51	8, 20	Parcel # 22 Brown Eliminate drive rights at stations 152+45 RT and 155+00 RT. Combine into one drive right to reflect new drive design. Decreased slope area and changed ending sta. for slope between sta. Per 154+93 RT - Rev. 154+93 RT. Added in Remarks column opposite Const. Eas. 0.03 Rev. 154+93 RT - Rev. 154+93 RT. (to Remove 8" V.C.P.) Per C.O. # 5358	5-12-82	KJP	
52	18	PARCELS # 3 & 4 MERRILL & KOENEMAN Added culvert information on layout for Culvert at sta. 121+44 ± Per C.O. # 5357	5-13-82	KJP	
53	11, 15	Parcel # 42 DUGUETTE, Revised Drive at Sta. 217+84 RE. Added Drive 1 Drive Rt (T) At Sta. 219+00 RT = 220+00 RT. Reduced Take Area To D.H.R. Revised Slope (T) STA. Rev. 217+85 RT - Rev. 222+00 RT. And Area To D.H.R. Revised Beginning Sta. Of Slope (P) To Rev. 220+00 RT. Revised Beginning STA. CUL. (P) To Rev. 217+54 RT. Added DIT. (P) Rev. 218+00 RT - Rev. 218+15 RT. Per Revised Design (L.O. # 5405	6-2-82	B.A.M.	T.E.M.
54	4, 17, 18	Added Parcel # 60 Per C.O. # 5410	6-2-82	B.A.M.	T.E.M.
55	25	Parcel # 51 Fielder - retained cellar drain Per C.O. # 5411	6-7-82	B.A.M.	JDP
56	5, 18	Parcel # 3 Merrill Add cul. (P) at sta. 121+81 LT & ditch (D) from sta. 121+81 LT - 122+10 LT. Per C.O. # 5433	6-14-82	JDP	T.E.M.
57	11, 22	Parcel # 31 Eldred Added drive (T) & CUL. (P) at sta. Rev. 100+70 LT. Per C.O. # 5434	6-14-82	JDP	T.E.M.
58	16, 15	Parcel 540 CITRINI, Revised Drive At Mill Rd. 52+00 RT. Moved To Mill Rd. 51+30 RT. Per Revised Design (C.O. # 5437	6-22-82	B.A.M.	E.H.S.
59	9, 20	Parcel # 22 Brown Added Drive At Sta. 152+45 RT. Per C.O. # 5449	6-23-82	B.A.M.	JDP
60	18, 19, 6	Parcel # 7 CITY OF MONT. DELETED REC. DEPT. FROM TITLE & CHANGED TITLE TAKEN TO AGREE. PER C.O. # 5457	6-23-82	B.A.M.	JDP
61	10, 21	Parcel # 26 DONOVAN, Added Trees & EASE TO LANDSCAPE (T) At Sta. Rev. 159+75 RT - 161+60 RT. Per Revised Design (C.O. # 5456	6-24-82	B.A.M.	T.E.M.
62	5, 18	Parcel # 3 Merrill, Added Cul. (P) at sta. 121+44 LT. Per C.O. # 5461	6-28-82	JDP	T.E.M.

MADE BY: N.W.J. DATE: 11-18-81  
CHECKED BY: R.L.S. DATE: 11-18-81

DR RT - DRAINAGE RIGHT  
DIT RT - DITCHING RIGHT  
CH RT - CHANNEL RIGHT  
DRIVE RT - DRIVE RIGHT  
CUL RT - CULVERT RIGHT  
D - DEMOLITION OR REMOVAL  
W - WATER SOURCES

PRESENT R.O.W.  
--- TAKING WITHOUT ACCESS  
--- TAKING WITHOUT ACCESS ALONG PROPERTY LINES  
--- TAKING WITH ACCESS  
(P) PERMANENT EASEMENT  
(T) TEMPORARY EASEMENT

LEGEND  
--- CONST. EASE. --- CONST. EASEMENT  
--- SR --- SR --- SLOPE RIGHTS  
--- P --- P --- PROPERTY LINE  
--- Δ --- Δ --- TOP OF CUT  
--- O --- O --- TOE OF SLOPE

APPROVED: \_\_\_\_\_ DATE: \_\_\_\_\_  
CHIEF OF PLANS & TITLES

MAY 28 1985  
PROJECT MONTPELIER  
NO. M 6400 (8)  
SHEET 8 OF 25

STATE OF VERMONT  
AGENCY OF TRANSPORTATION  
RIGHT-OF-WAY PLANS  
DETAIL SHEET

TABLE OF PROJECT PROPERTY ACQUISITION

PARCEL NO.	GRANTOR	SHEET NO.	BEGINNING STATION	ENDING STATION	TAKING	REM.	RIGHTS	TITLE TAKEN	DATE	TOWN OR CITY RECORDED	BK.	PG.	REMARKS
24	DELETED												FORMERLY CITY OF MONTPELIER
25	JANEWAY, EDWARD JR. & CLAUDE M.	20,21	REV 150+78 LT.	REV 161+77 LT.	0.01 A±			COND WOOL		MONTPELIER			280 S.E. 3450 S.E. 2800 S.E. 1750 S.E. 900 S.E. WATERLINE
			REV 156+10 LT.	REV 158+00 LT.			SLOPE (T) (0.08 A±)						
			REV 156+13 LT.	REV 157+92 LT.			CONST. EASE. (T) (0.06 A±)						
			REV 160+30 LT.	REV 161+77 LT.			SLOPE (T) (0.04 A±)						
			REV 160+30 LT.	REV 161+77 LT.			CONST. EASE. (T) (0.02 A±)						
			REV 161+05 LT.	REV 162+05 LT.			RIGHT TO INSTALL						
26	DONOVAN, RHODA C.	20,21	REV 157+81 RT.	REV 160+78 RT.	0.05 A±			WOOL	11-3-82	MONTPELIER	173	323-26	2050 S.E. 2200 S.E. WATERLINE WATERLINE 930 S.E.
			REV 159+18 RT.	REV 161+40 RT.			SLOPE (T) (0.05 A±)						
			REV 159+65 RT.	REV 159+76 RT.			CUL. (P)						
			REV 159+65 RT.	REV 159+16 RT.			DIT. (P) (50 S.E.)						
			REV 160+90 RT.	REV 161+00 RT.			DRIVE (T)						
			REV 160+94 LT.	REV 161+40 RT.			ALL R.T. & L.						
			REV 161+40 RT.	REV 163+40 RT.			SLOPE (P) (0.15 A±)						
			REV 161+50 RT.	REV 161+83 LT.			ALL R.T. & L.						
			REV 161+90 RT.	REV 162+26 RT.			CUL. (P)						
			REV 162+92 RT.	REV 163+97 RT.			DR. (P)						
			REV 162+92 RT.	REV 161+80 RT.			CONST. EASE. (T) (0.02 A±)						
			REV 159+75 RT.	REV 161+80 RT.			EASE. TO LANDSCAPE (T)						
27	FROSTICK, THOMAS & VERONICA	21	REV 161+77 LT.	REV 163+58 LT.	0.02 A±			WOOL	11-12-82	MONTPELIER	173	241-42	820 S.E. 1435 S.E. CELLAR DRAIN 2000 S.F.
			REV 161+77 LT.	REV 162+92 LT.			SLOPE (T) (0.03 A±)						
			REV 162+30 LT.	REV 162+30 RT.			ALL R.T. & L.						
			REV 162+70 LT.	REV 163+58 LT.			DRIVE (T)						
			REV 162+92 LT.	REV 163+58 LT.			DIT. (P) (280 S.E.)						
			REV 162+92 LT.	REV 163+58 LT.			CUL. (P)						
			REV 163+15 LT.	REV 163+58 LT.			CONST. EASE. (T) (350 S.E.)						
			REV 162+92 LT.	REV 163+58 LT.			SLOPE (P) (0.05 A±)						
28	NIES, ALEXANDER	21	REV 163+58 LT.	REV 169+83 RT.	0.44 A±			COND WOOL		MONTPELIER			2725 S.F.
			REV 163+58 LT.	REV 169+62 LT.			SLOPE (P) (1.39 A±)						
			REV 163+58 LT.	REV 169+30 LT.			CONST. EASE. (T) (0.15 A±)						
			REV 163+58 LT.	REV 163+85 LT.			DIT. (P) (1.25 S.E.)						
			REV 163+91 LT.	REV 169+62 LT.			DRIVE (T)						
			REV 164+00 LT.	REV 169+62 LT.			DIT. (P) (0.06 A±)						
			REV 164+35 LT.	REV 164+41 LT.			CUL. (P)						

TABLE OF REVISIONS

REVISION NO.	SHEET NO.	DESCRIPTION OF REVISION	DATE	MADE BY	APPROVED BY
63	18	Parcel # 29A Changed tree to remove at sta. 122+55 RT, 3000' save to free up sta. 121+25 RT and added stone pit to cul. at sta. 121+44 RT. Per CO # 5462 & 5463	7-1-82	JSP	J.F.M.
64	21	Parcel # 29A Added a second 3/4" copper waterline inside the 6" sewer at Rev. 172+74 RT ~ 173+09 LT. Per CO # 5467	7-13-82	DEM	
65	5,18	Parcel # 29A Added Ditch RT (P) RT STA 121+44 RT ~ 121+50 RT. Per CO # 5477	7-19-82	DEM	
66	5,18	Parcel # 4, Koenemann Added Ditch RT (P) RT STA 121+44 RT ~ 121+50 RT. Per CO # 5475	7-19-82	DEM	
67	18	Parcel # 2 DEPIN, Added Remove To 40" Pine Rt Surv. Sta. 121+25 Rt. Per Revised Design: CO # 5504	8-19-82	B.A.M.	
68	13,22	Corrected Equations on sheets to agree with design. Per CO 5520	8-30-82	S.G.M.	
69	10,21	Parcel # 27, FROSTICK, REVISED SLOPE RIGHTS. Per CO # 5545	9-15-82	DEM	AG
70	11,22	Parcel # 31 ELDRED, Deleted Drive i Drive Rt. (T) At Sta. 183+22 Lt. Added Drives i Drive Rt. (T) At Sta. 182+35 Lt. & Rev. 185+25 Lt. Per Revised Design: CO # 5553	9-20-82	B.A.M.	
71	5,18	Parcel # 31 MERRILL, Added Parcel # 3A Per CO # 6291	10-12-84	B.A.M.	J.S.B.

MADE BY: R.W.J. DATE: 11-18-81  
CHECKED BY: R.L.S. DATE: 11-18-81

DR. RT. - DRAINAGE RIGHT  
DIT. RT. - DITCHING RIGHT  
CH. RT. - CHANNEL RIGHT  
DRIVE RT. - DRIVE RIGHT  
CUL. RT. - CULVERT RIGHT  
D - DEMOLITION OR REMOVAL  
W - WATER SOURCES

--- PRESENT R.O.W.  
--- TAKING WITHOUT ACCESS  
--- TAKING WITHOUT ACCESS ALONG PROPERTY LINES  
--- TAKING WITH ACCESS  
(P) PERMANENT EASEMENT  
(T) TEMPORARY EASEMENT

LEGEND  
--- CONST. EASE. --- CONST. EASEMENT  
--- SR --- SR --- SLOPE RIGHTS  
--- P --- P --- PROPERTY LINE  
--- Δ --- Δ --- TOP OF CUT  
--- O --- O --- TOE OF SLOPE

APPROVED: \_\_\_\_\_ DATE: \_\_\_\_\_  
CHIEF OF PLANS & TITLES

MAY 28 1985

PROJECT MONTPELIER  
NO. M 6400 (8)  
SHEET 10 OF 25



STATE OF VERMONT  
AGENCY OF TRANSPORTATION  
RIGHT-OF-WAY PLANS  
DETAIL SHEET

TABLE OF PROJECT PROPERTY ACQUISITION

PARCEL NO.	GRANTOR	SHEET NO.	BEGINNING STATION	ENDING STATION	TAKING	REM.	RIGHTS	TITLE TAKEN	DATE	TOWN OR CITY RECORDED	BK.	PG.	REMARKS
32 A	COVE, DENNIS E. & NANCY E. COVE, DONALD E.	22,23	REV 180+56 RT REV 181+22 RT REV 184+17 RT	REV 182+00 RT	0.01 A±		DRIVE (T) DRIVE (T)	W.D.O.E.	7-22-82	MONTPELIER	173	117,118	580 SF±
32 B			REV 185+40 RT REV 185+65 RT REV 186+25 RT REV 186+88 RT REV 191+70 RT REV 193+65 RT REV 188+45 RT REV 188+50 RT	REV 193+86 RT REV 183+95 RT REV 187+60 RT REV 186+95 RT REV 193+86 RT REV 193+86 RT REV 188+50 RT	0.35 A±		CONST. EASE. (T) (0.03 A±) SLOPE (T) (70 S.F.±) DIT. (P) CONST. EASE. (T) (0.03 A±) SLOPE (T) (40 S.F.±) CUL. (P) DR. (P)					1100 SF± 1330 SF±	
				TOTAL	0.36 A±								
33	ELDRED, ROBERT A. & CAROL M.	22,23	190+90 LT 190+85 LT 190+92 LT REV 194+03 LT	REV 193+80 LT REV 193+95 LT 192+55 LT			DIT. (P) (0.03 A±) SLOPE (T) (0.08 A±) CONST. EASE. (T) (0.03 A±) DRIVE (T)	W.D.O.E.	8-4-82	MONTPELIER	173	153-154	1450 SF± 2500 SF± 1400 SF±
34 A	LUPIEN, LEON A. & GRACE L.	23	REV 193+86 RT REV 194+65 RT	REV 195+34 RT REV 195+34 RT	0.06 A±		ALL R. T. & L. SLOPE (P)	W.D.	10-1-82	MONTPELIER	173	265-66	2520 SF± 200 SF±
34 B			REV 193+86 R	REV 195+34 R	0.08 A±		ALL R. T. & L.						3625 SF± ELM STREET
				TOTAL	0.14 A±								
35	BROUSSEAU, FREDERICK L. & PAULINE G.	23	REV 194+15 LT REV 194+24 LT REV 194+35 LT REV 194+54 LT REV 194+55 LT	REV 194+81 LT REV 194+88 LT REV 195+74 LT REV 194+81 LT			SLOPE (T) (0.01 A±) CONST. EASE. (T) (0.01 A±) DRIVE (T) DIT. (P) (130 SF±) CUL. (P)	COND. W.D.O.E.		MONTPELIER			650 SF± 650 SF±

TABLE OF REVISIONS

REVISION NO.	SHEET NO.	DESCRIPTION OF REVISION	DATE	MADE BY	APPROVED BY

MADE BY: R.W.J. DATE 11-20-81  
CHECKED BY: R.L.S. DATE 11-23-81

DR. RT. - DRAINAGE RIGHT  
DIT. RT. - DITCHING RIGHT  
CH. RT. - CHANNEL RIGHT  
DRIVE RT. - DRIVE RIGHT  
CUL. RT. - CULVERT RIGHT  
⊖ - DEMOLITION OR REMOVAL  
W - WATER SOURCES

PRESENT R.O.W.  
--- TAKING WITHOUT ACCESS  
--- TAKING WITHOUT ACCESS ALONG PROPERTY LINES  
--- TAKING WITH ACCESS  
(P) PERMANENT EASEMENT  
(T) TEMPORARY EASEMENT

LEGEND  
--- CONST. EASE. --- CONST. EASEMENT  
SR --- SR --- SLOPE RIGHTS  
P --- P --- PROPERTY LINE  
--- Δ --- Δ --- TOP OF CUT  
--- ○ --- ○ --- TOE OF SLOPE

APPROVED: [Signature] DATE 11-23-81  
CHIEF OF PLANS & TITLES

MAY 27 1985

PROJECT MONTPELIER  
NO. M 6400 (8)  
SHEET (12) OF 25

STATE OF VERMONT  
AGENCY OF TRANSPORTATION  
RIGHT-OF-WAY PLANS  
DETAIL SHEET

TABLE OF PROJECT PROPERTY ACQUISITION

PARCEL NO.	GRANTOR	SHEET NO.	BEGINNING STATION	ENDING STATION	TAKING	REM.	RIGHTS	TITLE TAKEN	DATE	TOWN OR CITY RECORDED	BK.	PG.	REMARKS
36 A	ROBY, STEPHEN E & LINDA M.	23	REV. 195+34 RT. REV. 195+34 RT.	REV. 195+58 RT. REV. 195+58 RT.			ALL R.T. & L. ALL R.T. & L. SLOPE (P)	COND WOOD		MONTPELIER			100 SF± 25 SF±
36 B			REV. 194+79 LT. REV. 195+10 LT.	REV. 195+55 LT.			SLOPE (T) DRIVE (T)	(0.01 A±)					445 SF±
37 A	BUTTERFIELD, DAVID & CAROL M.	23	REV. 195+58 RT. REV. 195+85 RT.	REV. 199+60 RT. REV. 199+60 RT.	0.09 A±		ALL R.T. & L. ALL R.T. & L. SLOPE (P)	WOOD	9-9-82	MONTPELIER	173	211-2	4000 SF± 300 SF±
37 B			REV. 198+50 LT. REV. 195+55 LT. REV. 197+49 LT. REV. 199+35 LT. REV. 199+40 LT.	REV. 199+60 LT. REV. 199+30 LT. REV. 199+60 LT.	0.01 A±		SLOPE (T) DRIVE (T) DIT. (P) CUL. (P)						450 SF± 1150 SF±
				TOTAL	0.10 A±								
38 A	DELETED												FORMERLY HESS, R.N. & J.W.
38 B													
39 A	COTA, D. EILEEN	23	REV. 200+89 RT. REV. 200+89 RT.	REV. 203+04 RT. REV. 203+03 RT.			SLOPE (T) CONST. EASE. (T)	(0.07 A±) (0.06 A±)	AGREE.				3180 SF± 2640 SF±
39 B			REV. 201+90 LT. REV. 203+22 LT. REV. 201+90 LT. REV. 203+14 LT. REV. 203+32 LT.	REV. 203+65 LT. REV. 203+67 LT.			SLOPE (T) DRIVE (T)	(0.01 A±)					560 SF± PAVED CEDAR RAIL FENCE CEDAR RAIL FENCE CEDAR RAIL FENCE

*never acquired not in deed*

TABLE OF REVISIONS

REVISION NO.	SHEET NO.	DESCRIPTION OF REVISION	DATE	MADE BY	APPROVED BY

MADE BY: N.W.J. DATE: 11-20-81  
CHECKED BY: R.L.S. DATE: 11-23-81

DR. RT. - DRAINAGE RIGHT  
DIT. RT. - DITCHING RIGHT  
CH. RT. - CHANNEL RIGHT  
DRIVE RT. - DRIVE RIGHT  
CUL. RT. - CULVERT RIGHT  
⊖ - DEMOLITION OR REMOVAL  
W - WATER SOURCES

PRESENT R.O.W.  
--- TAKING WITHOUT ACCESS  
--- P --- TAKING WITHOUT ACCESS ALONG PROPERTY LINES  
--- TAKING WITH ACCESS  
(P) - PERMANENT EASEMENT  
(T) - TEMPORARY EASEMENT

LEGEND  
--- CONST. EASE. --- CONST. EASEMENT  
--- SR --- SR --- SLOPE RIGHTS  
P --- P --- PROPERTY LINE  
--- Δ --- Δ --- TOP OF CUT  
--- O --- O --- TOP OF SLOPE

APPROVED: \_\_\_\_\_ DATE: \_\_\_\_\_  
CHIEF OF PLANS & TITLES

MAY 27 1985

PROJECT: MONTPELIER  
NO. M 6400 (8)  
SHEET 13 OF 25

STATE OF VERMONT  
 AGENCY OF TRANSPORTATION  
 RIGHT-OF-WAY PLANS  
 DETAIL SHEET

TABLE OF PROJECT PROPERTY ACQUISITION

PARCEL NO.	GRANTOR	SHEET NO.	BEGINNING STATION	ENDING STATION	TAKING	REM.	RIGHTS	TITLE TAKEN	DATE	TOWN OR CITY RECORDED	5K.	PG.	REMARKS	
40 A	DASHNER, EDITH V.	23,24	REV. 204+00 RT.	REV. 208+58 RT.	0.09 Ac		SLOPE (T) (0.07 Ac) ALL R. T. & L. DRIVE (T) CONST. EASE. (T) (0.09 Ac) CUL. & DIT. (P) (0.03 Ac) CH. (P)	WDOE	7-9-82	MONTPELIER	173	93-4	3300 S.E.±	
			REV. 203+55 RT.	REV. 208+30 RT.									3100 S.E.±	
			REV. 203+55 RT.	REV. 203+77 LI.									SEWER LINE	
			REV. 204+08 RT.										PAVED	
			REV. 204+50 RT.	REV. 208+30 RL.									3950 S.E.±	
			REV. 204+72 RT.	REV. 208+30 RT.									1250 S.E.±	
40 B			REV. 203+65 LI.	REV. 203+75 LI.			SLOPE (T) (90 S.E.±) DRIVE (T) RIGHT TO INSTALL (T)						PAVED	
			REV. 203+81 LI.	REV. 204+73 LI.									FLAP VALVE TO CELLAR DRAIN	
			REV. 204+60 LI.											
41	BURZYCHI, STANLEY J. & DONNA L.	23,24	REV. 206+38 LI.				DRIVE (T) DRIVE (T) CONST. EASE. (T) (0.02 Ac) CH. (P) (0.02 Ac)	WDOE		MONTPELIER	173	173-N	PAVED	
			REV. 207+48 LI.										PAVED	
			REV. 208+15 LI.	REV. 208+55 LI.									975 S.E.±	
			REV. 208+30 LI.	REV. 203+58 LI.									760 S.E.±	
42 A	DUQUETTE, IDA E.	24,25	REV. 208+54 RT.	REV. 215+50 RT.	0.72 Ac		SLOPE (T) (300 S.E.±) DRIVE (T) ALL R. T. & L. SLOPE (P)	WDOE	10/18/82	MONTPELIER	173	295-96	2500 S.E.±	
			REV. 215+31 RT.	REV. 215+90 RT.										
			REV. 216+23 RT.											
			REV. 209+20 RT.	REV. 212+80 RT.										
42 B			REV. 217+00 RT.	REV. 226+48 RT.	0.11 Ac		SLOPE (T) (0.11 Ac) DRIVE (T) SLOPE (P) (0.11 Ac) CONST. EASE. (T) (0.14 Ac) DR. (P) CUL. (P) DR. (P) DIT. (P) DRIVE (T)							
			REV. 217+85 RT.	REV. 220+00 RT.										
			REV. 217+84 RT.											
			REV. 220+00 RT.	REV. 226+48 RT.										
			REV. 220+25 RT.	REV. 226+48 RT.										
			REV. 222+96 RT.											
			REV. 217+58 RT.	REV. 218+00 RT.										
			REV. 218+00 RT.	REV. 218+25 RT.										
			REV. 218+00 RT.	REV. 218+15 RT.										
			REV. 219+00 RT.	REV. 220+00 RT.										
42C			REV. 226+90 RT.	REV. 227+34 RT.	0.06 Ac		ALL R. T. & L.						2025 S.E.±	
			TOTAL		0.89 Ac									

TABLE OF REVISIONS

REVISION NO.	SHEET NO.	DESCRIPTION OF REVISION	DATE	MADE BY	APPROVED BY

MADE BY: KWJ DATE: 11-24-81

CHECKED BY: R.L.S. DATE: 11-24-81

DR RT - DRAINAGE RIGHT  
 DIT RT - DITCHING RIGHT  
 CH RT - CHANNEL RIGHT  
 DRIVE RT - DRIVE RIGHT  
 CUL. RT - CULVERT RIGHT  
 (D) - DEMOLITION OR REMOVAL  
 (W) - WATER SOURCES

PRESENT R.O.W.  
 --- TAKING WITHOUT ACCESS  
 --- TAKING WITHOUT ACCESS ALONG PROPERTY LINES  
 (P) PERMANENT EASEMENT  
 (T) TEMPORARY EASEMENT

LEGEND

CONST. EASE. --- CONST. EASEMENT  
 SR --- SR --- SLOPE RIGHTS  
 P --- P --- PROPERTY LINE  
 --- TOP OF CUT  
 --- TOP OF SLOPE

APPROVED: [Signature] DATE: 11-24-81  
 CHIEF OF PLANS & TITLES

MAY 27 1985

PROJECT: MONTPELIER

NO. M 6400 (8)

SHEET 14 OF 25

STATE OF VERMONT  
AGENCY OF TRANSPORTATION  
RIGHT-OF-WAY PLANS  
DETAIL SHEET

TABLE OF PROJECT PROPERTY ACQUISITION

PARCEL NO.	GRANTOR	SHEET NO.	BEGINNING STATION	ENDING STATION	TAKING	REM.	RIGHTS	TITLE TAKEN	DATE	TOWN OR CITY RECORDED	BK.	PG.	REMARKS
43	ALEXANDER, ROBERT C. ALEXANDER, ALBERT A. ALEXANDER, ALLEN B. CAMPBELL, ALICE E. BUSHEY, ROBERTA L.	24	REV. 208+52 LT. REV. 208+54 LT. REV. 209+10 LT.	REV. 210+40 LT. REV. 209+97 LT. REV. 210+00 LT.			CONST. EASE. (T) 0.05 A± CHANNEL (P) 0.02 A± SLOPE (T) 0.02 A±	WOOD		MONTPELIER			2355 S.F.± 700 S.F.± 900 S.F.±
44	PERRY, CHRISTINE BROWN	21-25	REV. 161+00 RT.	MILL RD. 52+00 RT.			ALL R. T. & I.	CCD	7-29-82	MONTPELIER	160	479,480	FLOWAGE RTS. IN NORTH BRANCH RIVER
45	MERCHANT, MICHAEL A. & CAROL V.	24	REV. 211+38 LT.	REV. 212+40 LT.			SLOPE (T) 0.02 A±	AGREE.					735 S.F.±
46	RELATION, LESLIE A. & DOROTHY M.	24	REV. 212+40 LT.	REV. 213+33 LT.			SLOPE (T) 300 S.F.±	AGREE.					
47	MCDONALD, ROBERT W. & LYNN B.	24	REV. 214+72 LT. REV. 213+33 LT. REV. 214+47 LT. REV. 214+60 LT. REV. 214+60 LT. REV. 214+70 LT. REV. 214+72 LT.	REV. 215+47 LT. REV. 214+35 LT. REV. 216+45 LT. REV. 216+20 LT. REV. 216+45 LT.	0.03 A±		SLOPE (T) 300 S.F.± DRIVE (T) SLOPE (P) 0.34 A± CONST. EASE. (T) 0.04 A± CUL. (P) DIT. (P) 0.02 A±	WOOD	8-12-82	MONTPELIER	173	171-72	1100 S.F.± PAVED 1600 S.F.± 865 S.F.±
48	WEARS, STEPHEN A. & CHRISTINE GOSS	24	REV. 216+45 LT. REV. 216+14 LT. REV. 216+18 LT. REV. 216+45 LT. REV. 219+28 LT. REV. 219+50 LT.	REV. 219+79 LT. REV. 219+88 LT. REV. 219+85 LT. REV. 219+81 LT. REV. 219+72 LT.	0.04 A±		CONST. EASE. (T) 0.08 A± SLOPE (P) 0.58 A± DIT. (P) 0.04 A± CUL. (P) DRIVE (T)	WOOD	8-11-82	MONTPELIER	173	165-66	1950 S.F.± 3700 S.F.± 1680 S.F.±
49	GOSS, ARTHUR J. & JANIS P.	24, 25	REV. 219+79 LT. REV. 219+85 LT. REV. 222+50 LT. REV. 222+98 LT. REV. 223+52 LT. REV. 219+81 LT.	REV. 221+45 LT. REV. 223+50 LT. REV. 223+50 LT. REV. 221+40 LT.			SLOPE (T) 0.03 A± CONST. EASE. (T) 0.07 A± SLOPE (T) 200 S.F.± CUL. (P) DRIVE (T) DIT. (P) 0.02 A±	WOOD	7-28-82	MONTPELIER	173	131,132	1285 S.F.± 3200 S.F.± PAVED 785 S.F.±

TABLE OF REVISIONS

REVISION NO.	SHEET NO.	DESCRIPTION OF REVISION	DATE	MADE BY	APPROVED BY

MADE BY: J. PATERSON DATE: NOV. 23, 1981  
CHECKED BY: R. STANOLIFF DATE: NOV. 23, 1981

DR. RT. - DRAINAGE RIGHT  
DIT. RT. - DITCHING RIGHT  
CH. RT. - CHANNEL RIGHT  
DRIVE RT. - DRIVE RIGHT  
CUL. RT. - CULVERT RIGHT  
Ⓧ - DEMOLITION OR REMOVAL  
Ⓜ - WATER SOURCES

PRESENT R.O.W.  
--- TAKING WITHOUT ACCESS  
--- P --- TAKING WITHOUT ACCESS ALONG PROPERTY LINES  
--- TAKING WITH ACCESS  
(P) PERMANENT EASEMENT  
(T) TEMPORARY EASEMENT

LEGEND  
--- CONST. EASE. --- CONST. EASEMENT  
--- SR --- SR --- SLOPE RIGHTS  
P L P L PROPERTY LINE  
--- Δ --- Δ --- TOP OF CUT  
--- ○ --- ○ --- T.O.E. OF SLOPE

APPROVED *Thomas J. Mason* DATE: 12-18-81  
CHIEF OF PLANS & TITLES

MAY 27 1985

PROJECT MONTPELIER  
NO. M 6400 (B)  
SHEET 15 OF 25

14

STATE OF VERMONT  
AGENCY OF TRANSPORTATION  
RIGHT-OF-WAY PLANS  
DETAIL SHEET

TABLE OF PROJECT PROPERTY ACQUISITION

PARCEL NO.	GRANTOR	SHEET NO.	BEGINNING STATION	ENDING STATION	TAKING	REM.	RIGHTS	TITLE TAKEN	DATE	TOWN OR CITY RECORDED	BK.	PG.	REMARKS
50	CHOQUINARD, ADELARD A. & DORINA	25	REV. 226+90 RT.	REV. 227+34 RT.	0.06 A±			W.D.E.	1-28-84	MONTPELIER	173	413-14	2625 S.F.±
51A	FIELDER, FLOYD R. & ALBERTA W.	25	REV. 227+18 RT. REV. 228+30 RT. REV. 227+85 LT. REV. 228+25 LT.	REV. 228+48 RT. REV. 228+46 RT. REV. 233+83 LT.	0.12 A±		ALL R.T. & L. SLOPE (P) DRIVE (T) ALL R.T. & L.	COND W.D.E.		MONTPELIER			32 S.F.±  WATERLINE
52A	JANGRAW, JOHN J. & BETTE E.	25	REV. 228+46 RT. REV. 228+46 RT. REV. 228+55 LT. REV. 228+70 LT.	REV. 229+10 RT. REV. 229+07 RT.	0.01 A±		ALL R.T. & L. SLOPE (P) DRIVE (T) CUL. (P)	W.D.E.	8-3-82	MONTPELIER	173	437-39	600 S.F.± 300 S.F.± PAVED
53A	MAGDOON, WENDELL A. & LILLIAN M.	25	REV. 228+07 RT. REV. 229+07 RT. REV. 229+14 LT. REV. 229+25 LT. REV. 229+40 LT. REV. 230+00 LT. REV. 230+57 LT. REV. 230+82 LT.	REV. 230+87 RT. REV. 230+82 RT. REV. 230+87 LT. REV. 231+56 LT. REV. 230+82 LT. REV. 230+94 LT.	0.03 A± 0.02 A± TOTAL 0.05 A±		ALL R.T. & L. SLOPE (P) SLOPE (T) 0.05 A± DRIVE (T) DRIVE (T) CUL. (P) DIT. (P) 160 S.F.±	COND W.D.E.		MONTPELIER			1500 S.F.± 750 S.F.± 700 S.F.± 2300 S.F.±
54A	CITRINI, NELLIE	25	REV. 230+82 RT. REV. 233+53 RT. REV. 235+15 RT. MILL RD. 51+50 LT. REV. 235+05 RT.	MILL RD. 52+00 RT. REV. 234+41 RT. REV. 235+72 RT. REV. 235+40 RT.	0.18 A± 0.07 A± TOTAL 0.25 A±		ALL R.T. & L.  SLOPE (T) 300 S.F.± DRIVE (T) ALL R.T. & L.	W.D.E.	7-20-82	MONTPELIER	173	103-104	3180 S.F.±  WATERLINE

TABLE OF REVISIONS

REVISION NO.	SHEET NO.	DESCRIPTION OF REVISION	DATE	MADE BY	APPROVED BY

MADE BY: J. PATERSON DATE NOV 23, 1981  
CHECKED BY: R. STANCLIFF DATE NOV 23, 1981

DR. RT. - DRAINAGE RIGHT  
DT. RT. - DITCHING RIGHT  
CH. RT. - CHANNEL RIGHT  
DRIVE RT. - DRIVE RIGHT  
CUL. RT. - CULVERT RIGHT  
⊙ - DEMOLITION OR REMOVAL  
W - WATER SOURCES

PRESENT R.O.W.  
TAKING WITHOUT ACCESS  
TAKING WITHOUT ACCESS ALONG PROPERTY LINES  
TAKING WITH ACCESS  
(P) PERMANENT EASEMENT  
(T) TEMPORARY EASEMENT

LEGEND  
--- CONST. EASEMENT  
SR SR SLOPE RIGHTS  
P L PROPERTY LINE  
△ TOP OF CUT  
○ TOE OF SLOPE

APPROVED: *Henry J. Maguire* DATE 12-18-81  
CHIEF OF PLANS & TITLES

MAY 27 1985  
PROJECT MONTPELIER  
NO. M 6400 (8)  
SHEET 16 OF 25

STATE OF VERMONT  
AGENCY OF TRANSPORTATION  
RIGHT-OF-WAY PLANS  
DETAIL SHEET

TABLE OF PROJECT PROPERTY ACQUISITION

PARCEL NO.	GRANTOR	SHEET NO.	BEGINNING STATION	ENDING STATION	TAKING	REM.	RIGHTS	TITLE TAKEN	DATE	TOWN OR CITY RECORDED	BK.	PG.	REMARKS
55A	LAGUE, INC.	19	REV. 137+40 LT.	REV. 137+90 LT.			ALL R, T & I	WDOE	9-7-82	MONTPELIER	173	209-D	50' R.O.W.
55B			REV. 141+87 LT.	REV. 142+37 LT.			ALL R, T & I						50' R.O.W.
56	NEW ENGLAND TELEPHONE & TELEGRAPH CO.												UTILITY
57	MONTPELIER CABLE T.V., INC.												UTILITY
58	GREEN MOUNTAIN POWER CORP.												UTILITY
59	CITY OF MONTPELIER PUBLIC WORKS DEPT.												UTILITY
60	SHUJI KATAU - LESSOR WOODBURY ASSOCIATES - LESSEE	19	REV. 137+00 LT. REV. 137+00 LT. REV. 137+00 LT. REV. 137+00 LT.	REV. 138+50 LT. REV. 137+40 LT. REV. 138+50 LT. REV. 138+50 LT.	0.05 Ac		CULVERT (P) SLOPE (T) (300 SF±) CONST. EASE. (T) (0.03 Ac±)	OPTION	9-9-82	MONTPELIER	176	11-13	(1350 SF±) (1500 SF±)

TABLE OF REVISIONS

REVISION NO.	SHEET NO.	DESCRIPTION OF REVISION	DATE	MADE BY	APPROVED BY

MADE BY: 888 DATE 12-17-81  
CHECKED BY: RLS DATE 12-18-81

DR RT - DRAINAGE RIGHT  
DIT RT - DITCHING RIGHT  
CH RT - CHANNEL RIGHT  
DRIVE RT - DRIVE RIGHT  
CUL RT - CULVERT RIGHT  
ⓓ - DEMOLITION OR REMOVAL  
W - WATER SOURCES

————— PRESENT R.O.W.  
- - - - - TAKING WITHOUT ACCESS  
- - - - - TAKING WITHOUT ACCESS ALONG PROPERTY LINES  
- - - - - TAKING WITH ACCESS  
(P) PERMANENT EASEMENT  
(T) TEMPORARY EASEMENT

LEGEND  
- - - - - CONST. EASE. - - - - - CONST. EASEMENT  
SR - SR - SLOPE RIGHTS  
P - P - PROPERTY LINE  
- Δ - Δ - TOP OF CUT  
- O - O - TOE OF SLOPE

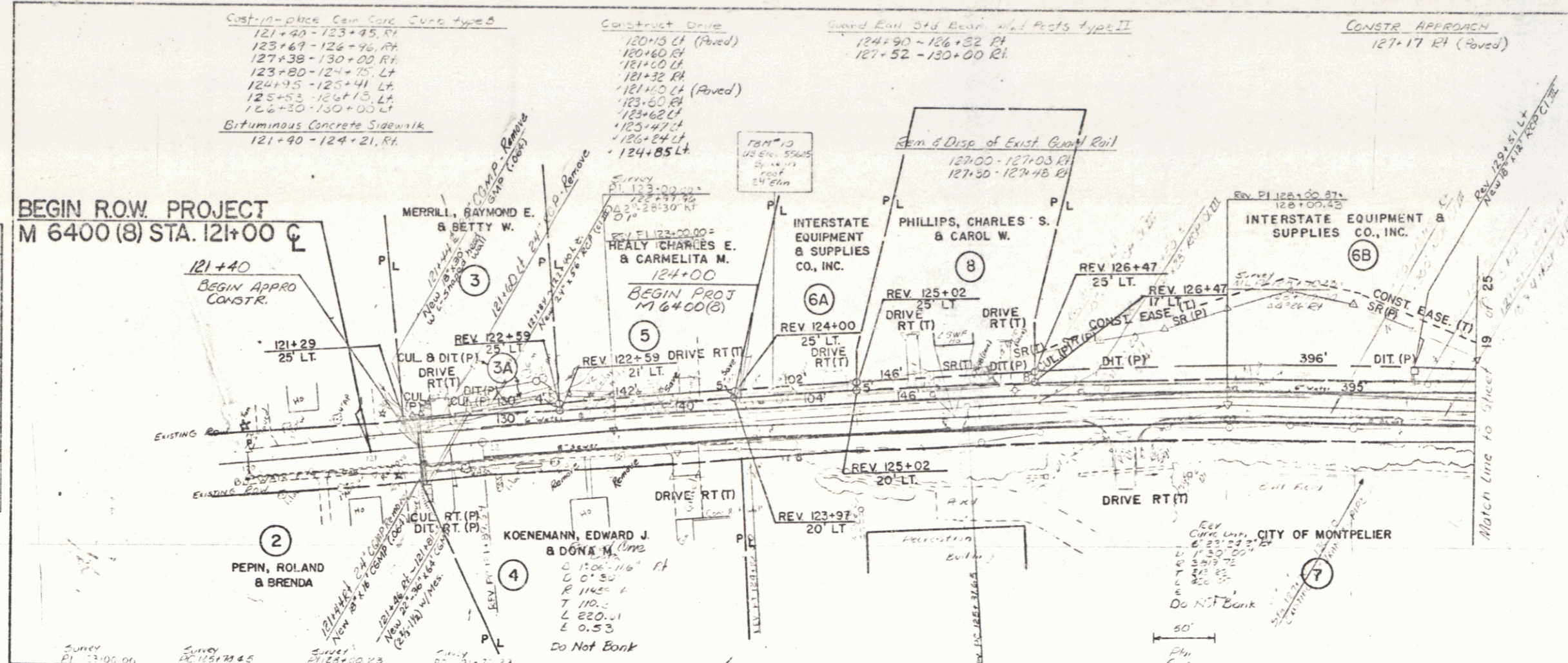
APPROVED: *Thomas P. Mass* DATE 12-18-81  
CHIEF OF PLANS & TITLES

MAY 27 1985

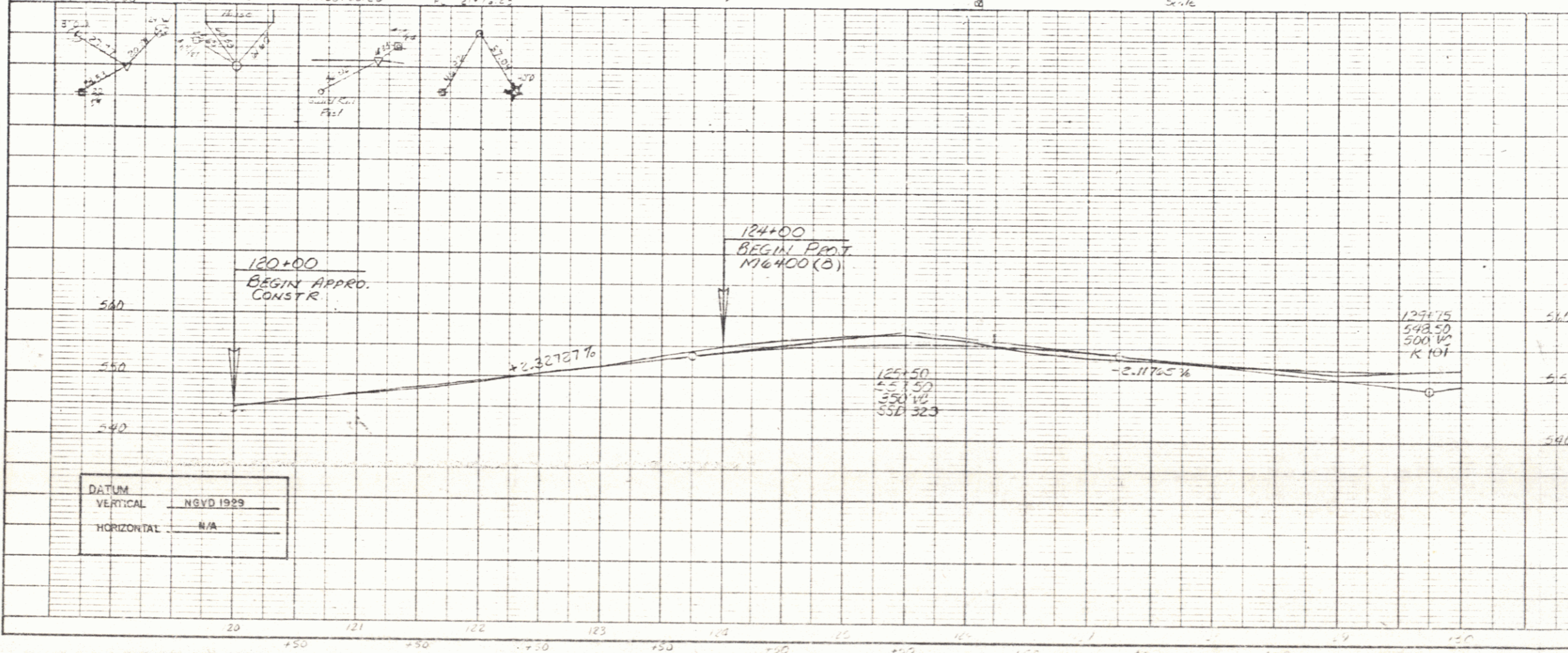
PROJECT MONTPELIER  
NO. M 6400 (8)  
SHEET 17 OF 23

DATE	
BY	
PROJECT	
LOCATION	
SCALE	
NOTE BOOK	
NO.	
PLAN	
DATE	
BY	
PROJECT	
LOCATION	
SCALE	
NOTE BOOK	
NO.	

**BEGIN ROW PROJECT**  
**M 6400 (8) STA. 121+00 C**



DATE	
BY	
PROJECT	
LOCATION	
SCALE	
NOTE BOOK	
NO.	
PROFILE	
DATE	
BY	
PROJECT	
LOCATION	
SCALE	
NOTE BOOK	
NO.	



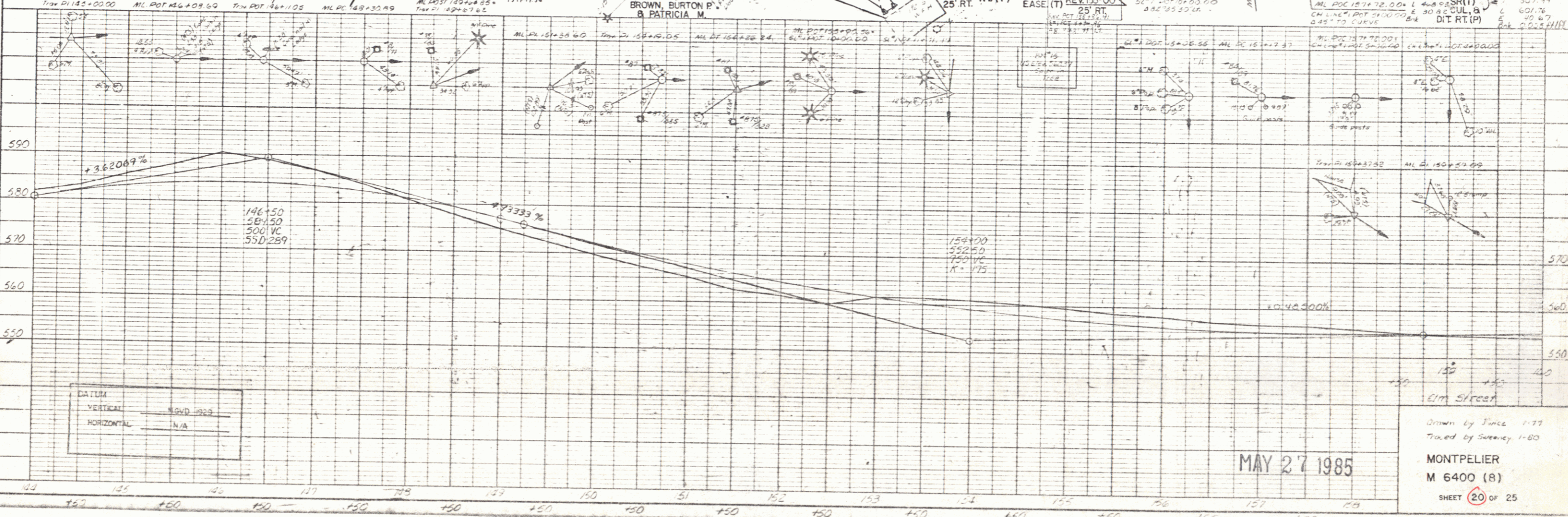
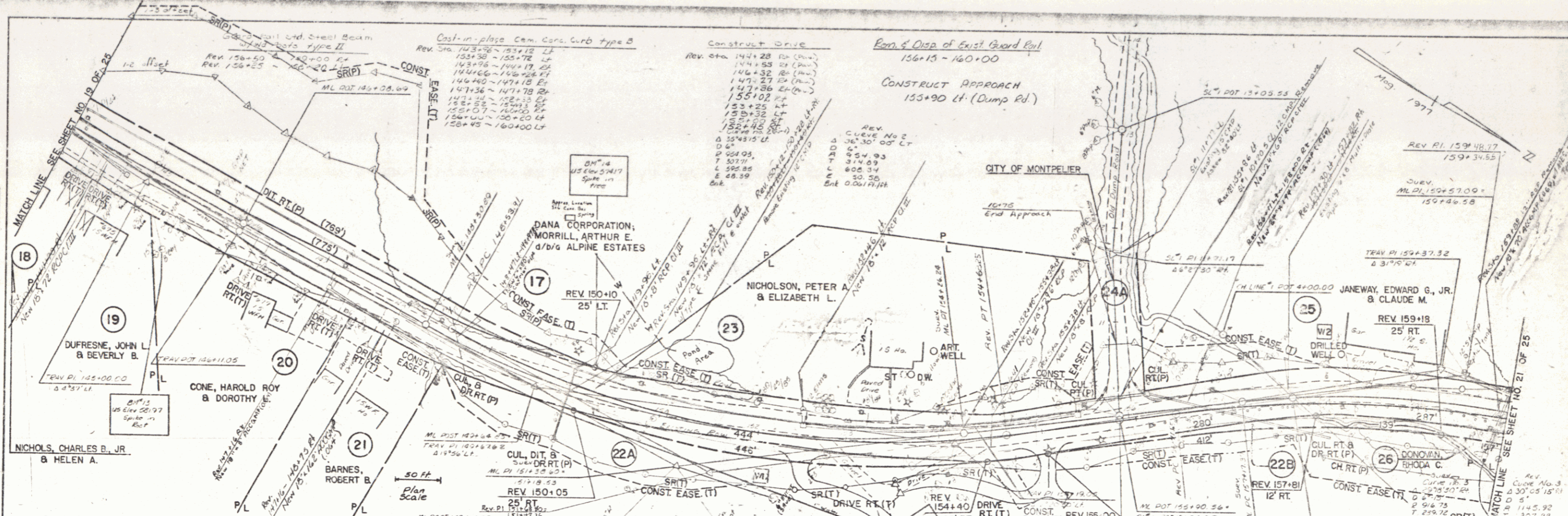
DATUM  
 VERTICAL NGVD 1929  
 HORIZONTAL N/A

MAY 27 1985  
 Elm Street  
 Drawn by Sweeney & Co  
 Traced by Sweeney & Co  
 Montpelier  
**M 6400 (8)**  
 Sheet 18 of 25



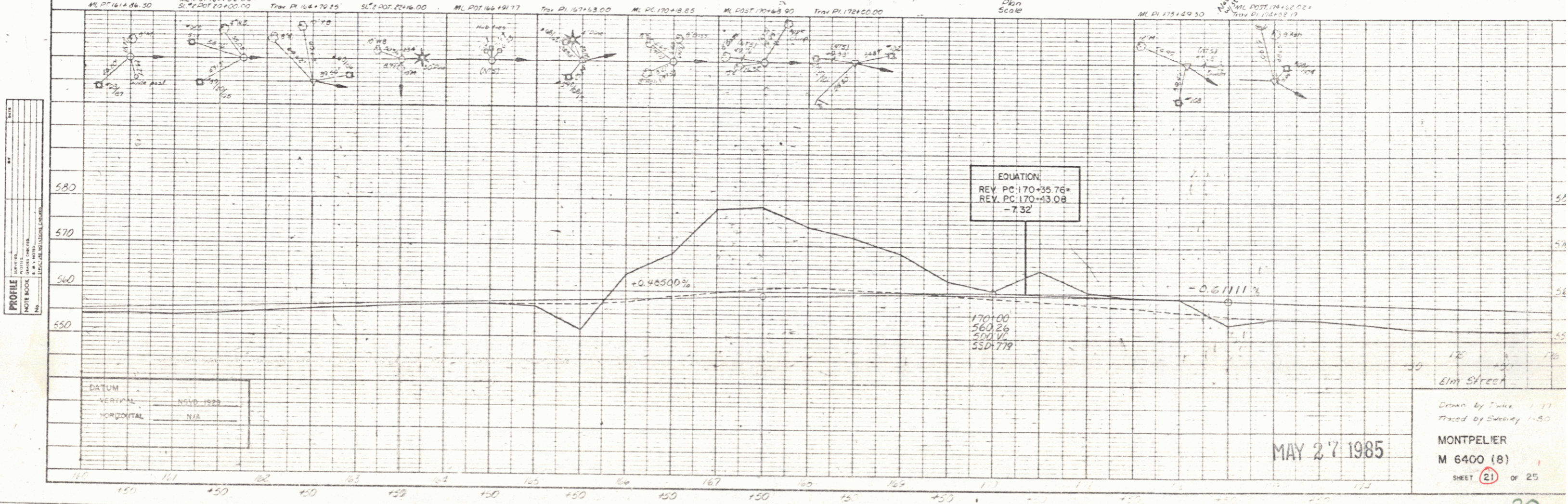
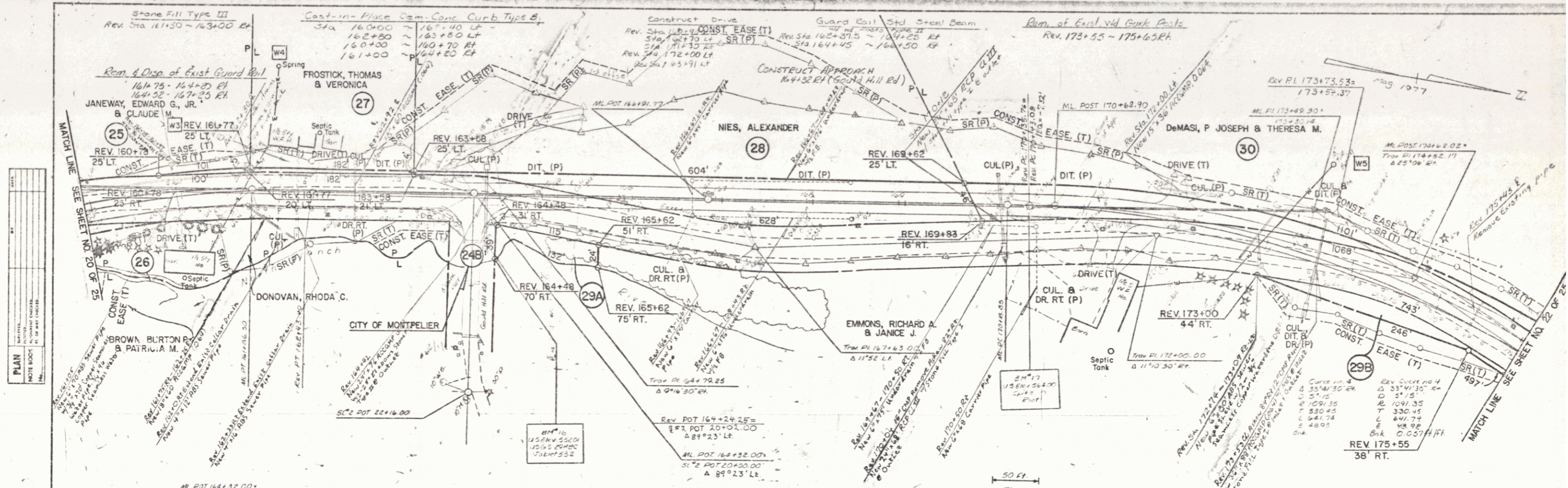
DATE	
BY	
CHECKED	
APPROVED	
PROJECT	
NOTE BOOK	
NO.	
SCALE	
LOCATION	

DATE	
BY	
CHECKED	
APPROVED	
PROJECT	
NOTE BOOK	
NO.	
SCALE	
LOCATION	



MAY 27 1985

Drawn by Jince 1-77  
 Traced by Sweeney 1-80  
 MONTPELIER  
 M 6400 (B)  
 SHEET 20 OF 25

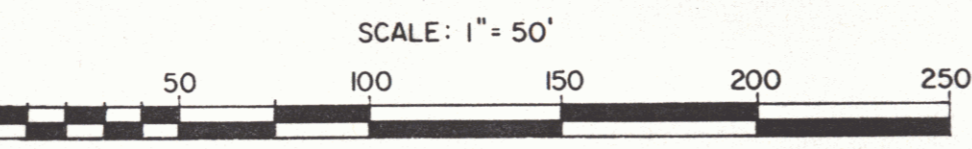
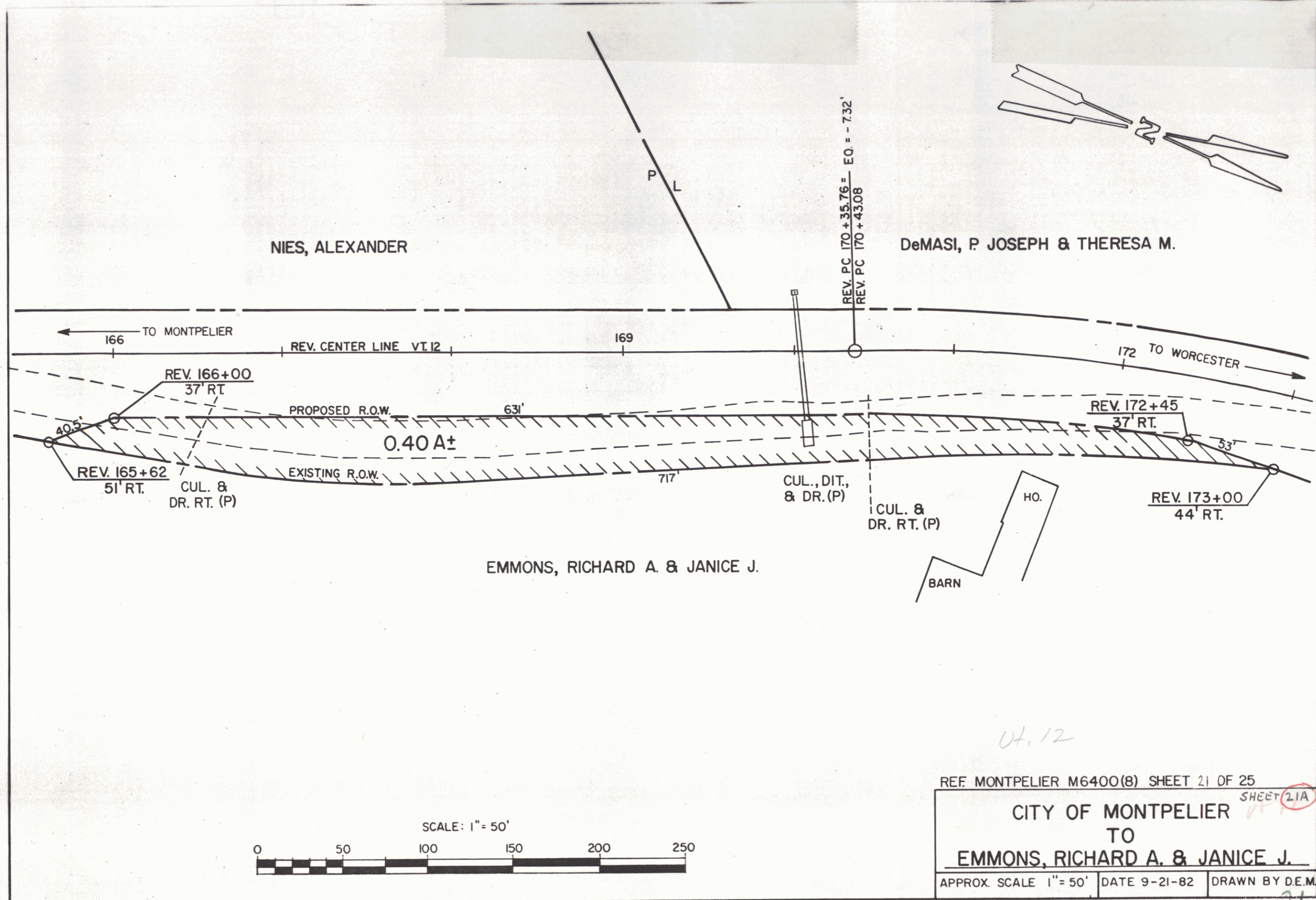


**PLAN**  
 NOTES:  
 1. SEE SHEET NO. 20 OF 25  
 2. SEE SHEET NO. 21 OF 25

**PROFILE**  
 NOTES:  
 1. SEE SHEET NO. 20 OF 25  
 2. SEE SHEET NO. 21 OF 25

MAY 27 1985

Drawn by [Name]  
 Traced by [Name]  
 MONTPELIER  
 M 6400 (8)  
 SHEET 21 OF 25



04.12

REF. MONTPELIER M6400(8) SHEET 21 OF 25

CITY OF MONTPELIER  
TO  
EMMONS, RICHARD A. & JANICE J.

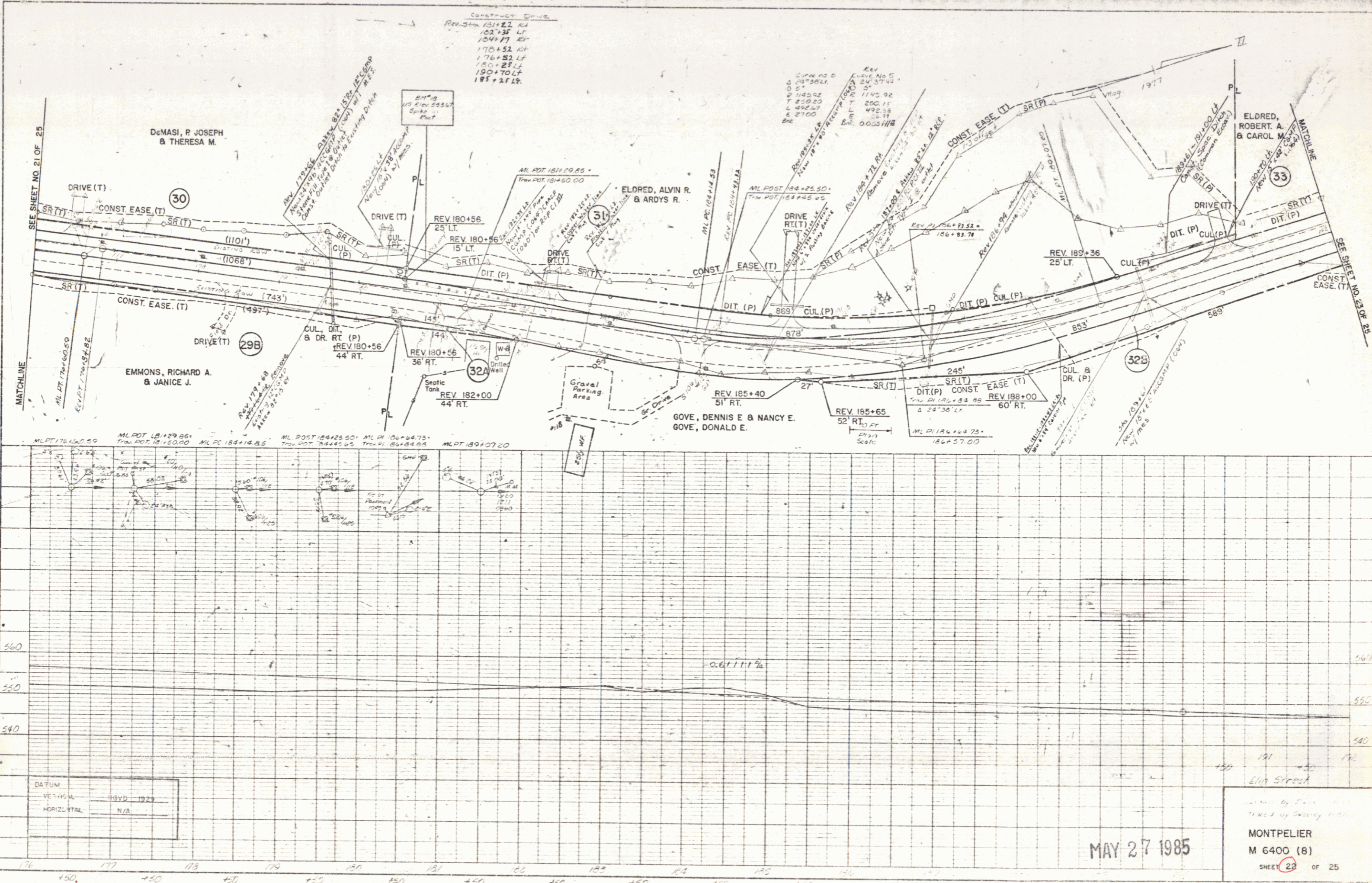
APPROX. SCALE 1" = 50'    DATE 9-21-82    DRAWN BY D.E.M.

SHEET 21A

21

PLAN  
 1088 BOOK  
 No. 1088

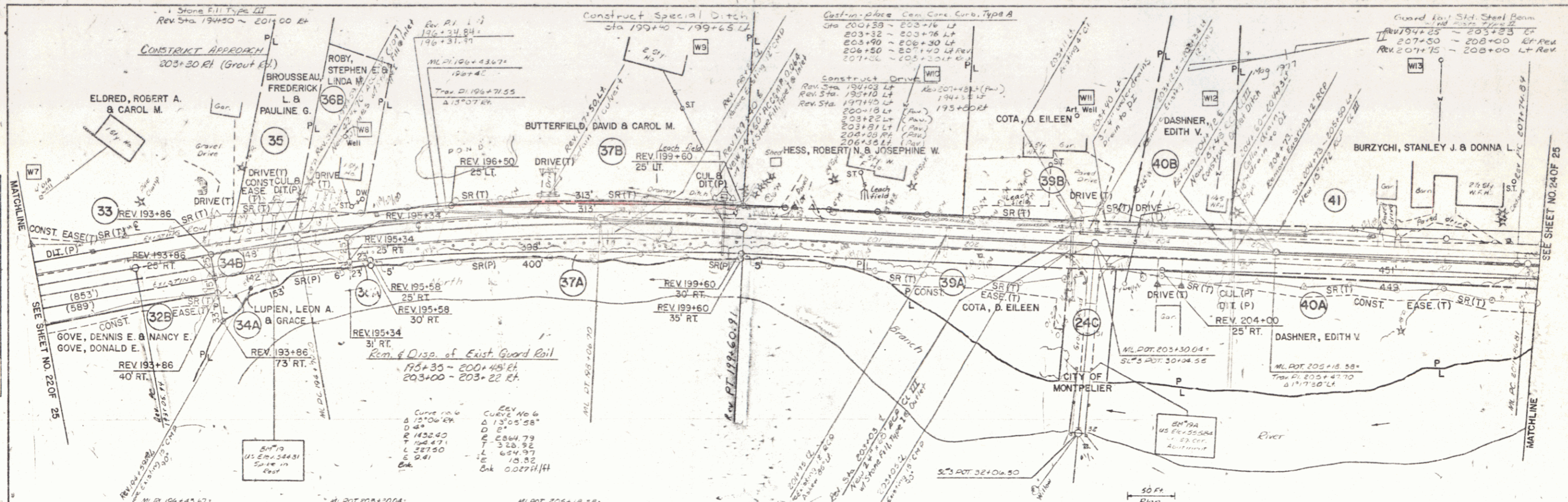
PROFILE  
 1088 BOOK  
 No. 1088



MAY 27 1985

MONTPELIER  
 M 6400 (8)  
 SHEET 22 OF 25

22



PLAN

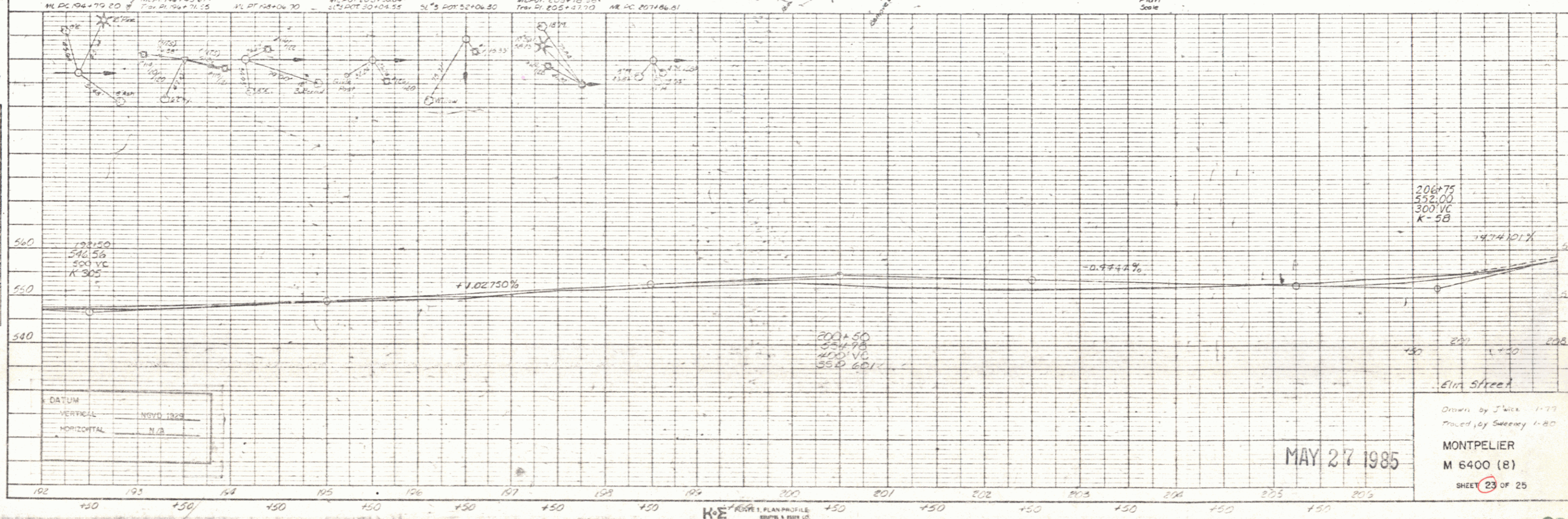
NOTES:

1. ALL DISTANCES UNLESS OTHERWISE SPECIFIED ARE IN FEET.
2. ALL CURVES UNLESS OTHERWISE SPECIFIED ARE IN FEET.
3. ALL ANGLES UNLESS OTHERWISE SPECIFIED ARE IN DEGREES.
4. ALL DIMENSIONS UNLESS OTHERWISE SPECIFIED ARE IN FEET.
5. ALL DIMENSIONS UNLESS OTHERWISE SPECIFIED ARE IN FEET.
6. ALL DIMENSIONS UNLESS OTHERWISE SPECIFIED ARE IN FEET.
7. ALL DIMENSIONS UNLESS OTHERWISE SPECIFIED ARE IN FEET.
8. ALL DIMENSIONS UNLESS OTHERWISE SPECIFIED ARE IN FEET.
9. ALL DIMENSIONS UNLESS OTHERWISE SPECIFIED ARE IN FEET.
10. ALL DIMENSIONS UNLESS OTHERWISE SPECIFIED ARE IN FEET.

PROFILE

NOTES:

1. ALL ELEVATIONS UNLESS OTHERWISE SPECIFIED ARE IN FEET.
2. ALL DISTANCES UNLESS OTHERWISE SPECIFIED ARE IN FEET.
3. ALL ANGLES UNLESS OTHERWISE SPECIFIED ARE IN DEGREES.
4. ALL DIMENSIONS UNLESS OTHERWISE SPECIFIED ARE IN FEET.
5. ALL DIMENSIONS UNLESS OTHERWISE SPECIFIED ARE IN FEET.
6. ALL DIMENSIONS UNLESS OTHERWISE SPECIFIED ARE IN FEET.
7. ALL DIMENSIONS UNLESS OTHERWISE SPECIFIED ARE IN FEET.
8. ALL DIMENSIONS UNLESS OTHERWISE SPECIFIED ARE IN FEET.
9. ALL DIMENSIONS UNLESS OTHERWISE SPECIFIED ARE IN FEET.
10. ALL DIMENSIONS UNLESS OTHERWISE SPECIFIED ARE IN FEET.



DATUM

VERTICAL: NAD 83

HORIZONTAL: N/A

206+75  
552.00  
300' VC  
K=58

14.74101%

480 490 500 510 520 530 540 550 560

192 193 194 195 196 197 198 199 200 201 202 203 204 205 206

50 FT  
Plan Scale

Elm Street

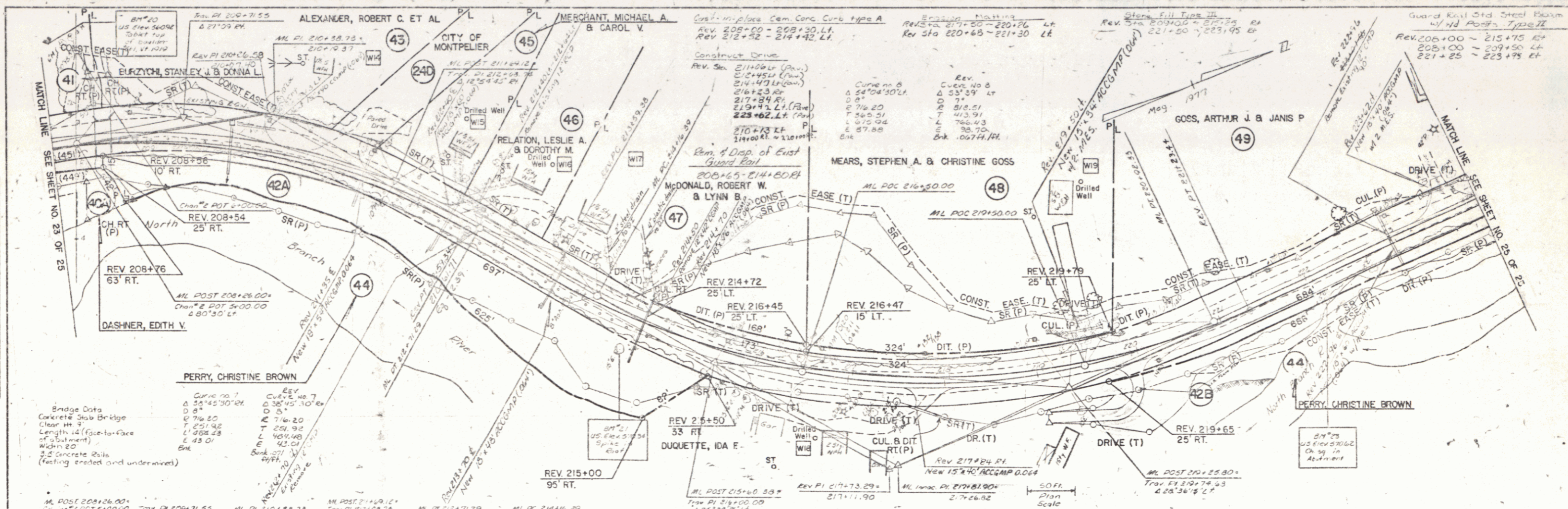
Drawn by J Wick 1-77  
Placed by Sweeney 1-80

MONTPELIER  
M 6400 (B)

SHEET 23 OF 25

MAY 27 1985

K&E

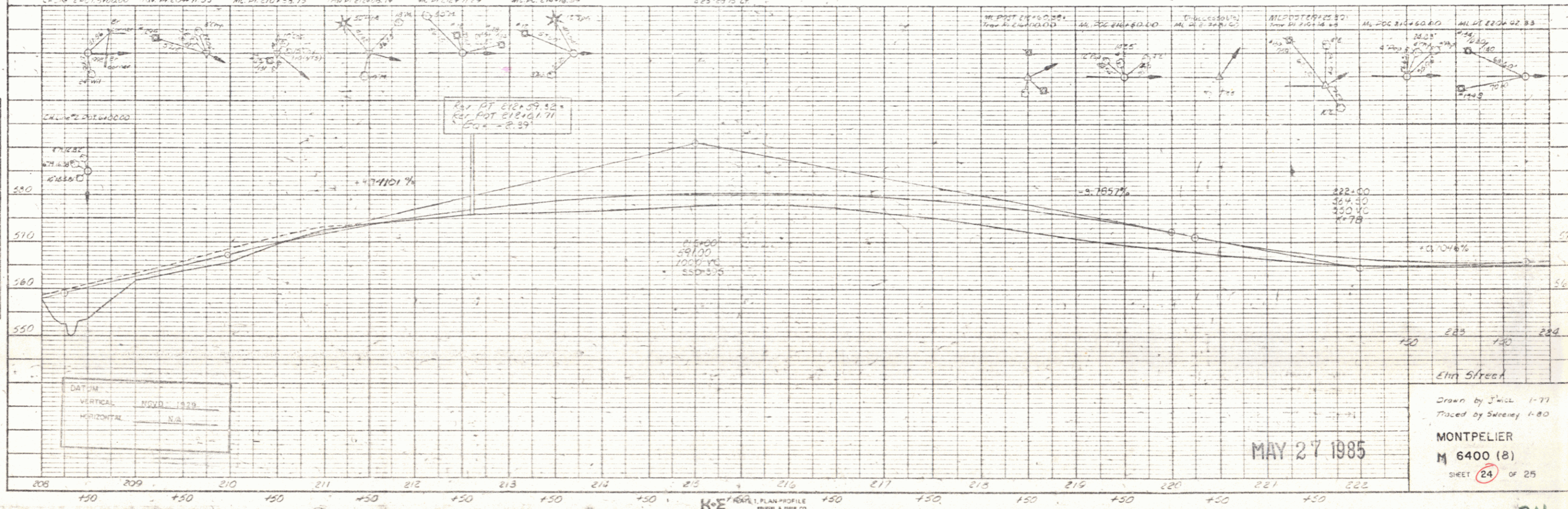


**PLAN**

NOTE BOOK

DATE

NO.



**PROFILE**

NOTE BOOK

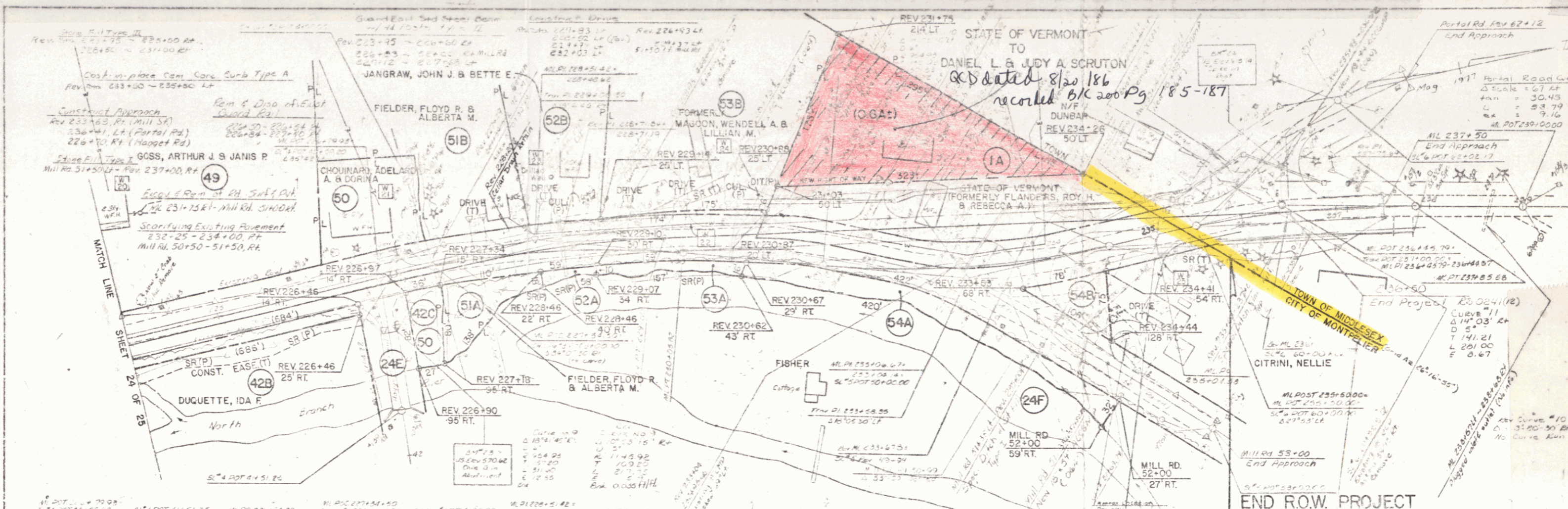
DATE

NO.

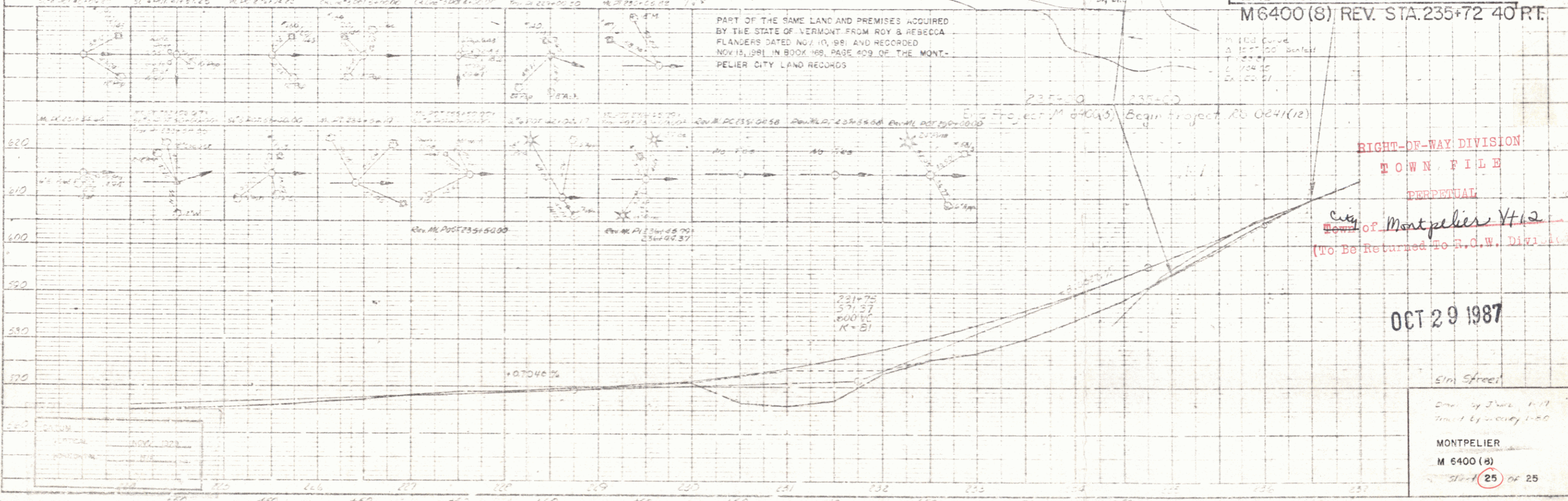
DATUM  
 VERTICAL MVDL 1929  
 HORIZONTAL N.A.

MAY 27 1985

Drawn by J. Wilc 1-77  
 Placed by Sweeney 1-80  
**MONTPELIER**  
**M 6400 (8)**  
 SHEET 24 OF 25



PLAN  
NOTES



PROFILE  
NOTES

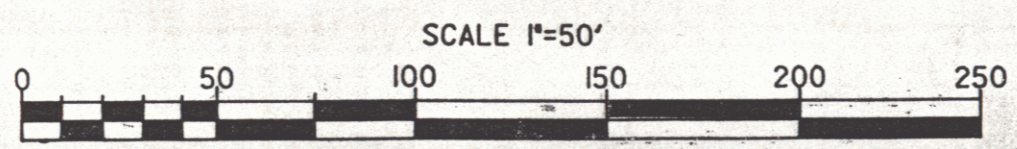
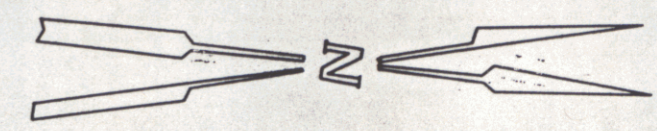
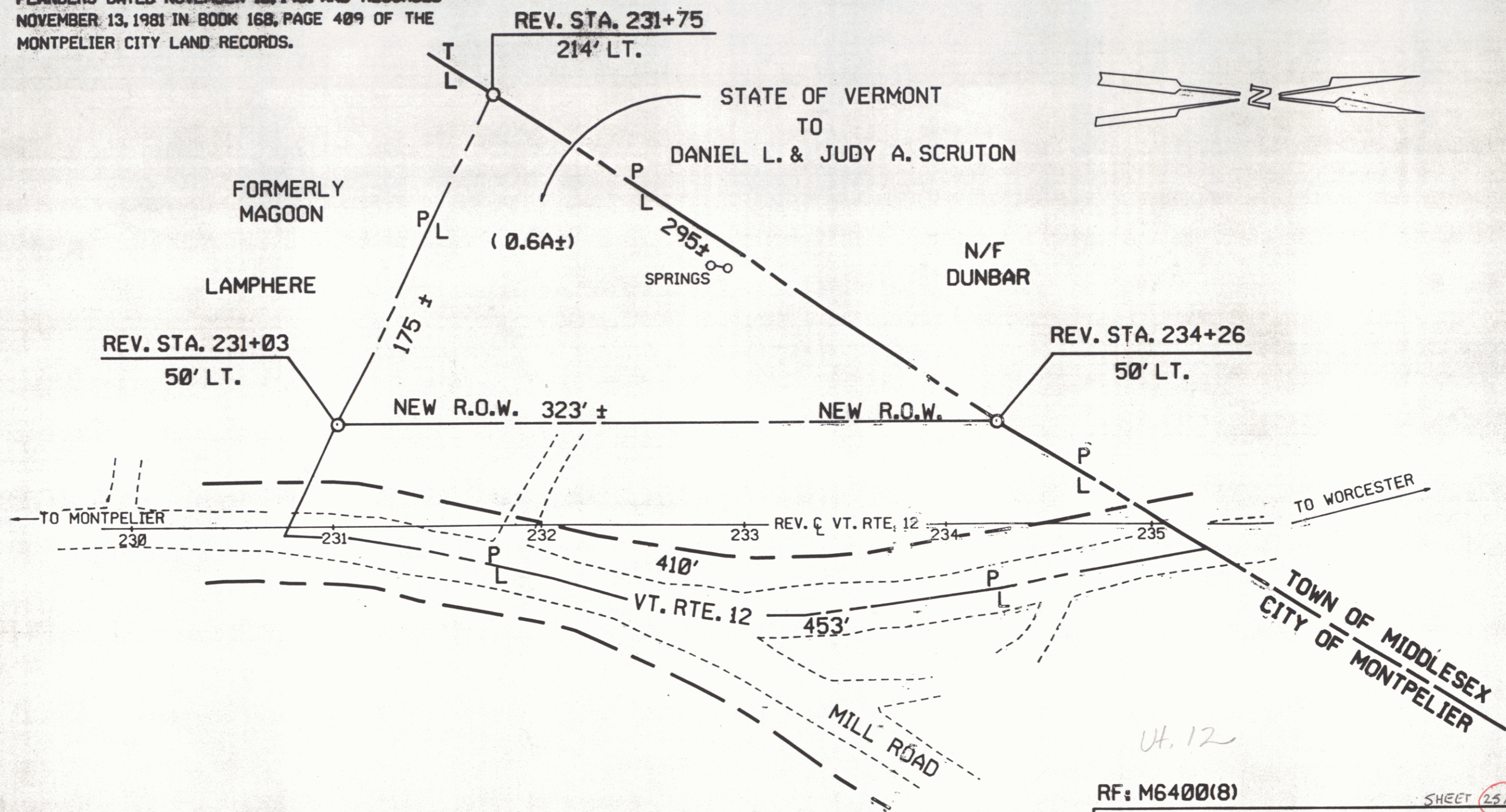
END R.O.W. PROJECT  
M6400 (8) REV. STA. 235+72.40 RT.

RIGHT-OF-WAY DIVISION  
TOWN FILE  
PERPETUAL  
City of Montpelier Vt  
(To Be Returned To R.O.W. Div.)

OCT 29 1987

5th Street  
Montpelier  
M 6400 (8)  
Sheet 25 of 25

PART OF THE SAME LAND AND PREMISES ACQUIRED BY THE STATE OF VERMONT FROM ROY AND REBECCA FLANDERS DATED NOVEMBER 10, 1981 AND RECORDED NOVEMBER 13, 1981 IN BOOK 168, PAGE 409 OF THE MONTPELIER CITY LAND RECORDS.



RF: M6400(8) SHEET 25A

STATE OF VERMONT  
AGENCY OF TRANSPORTATION

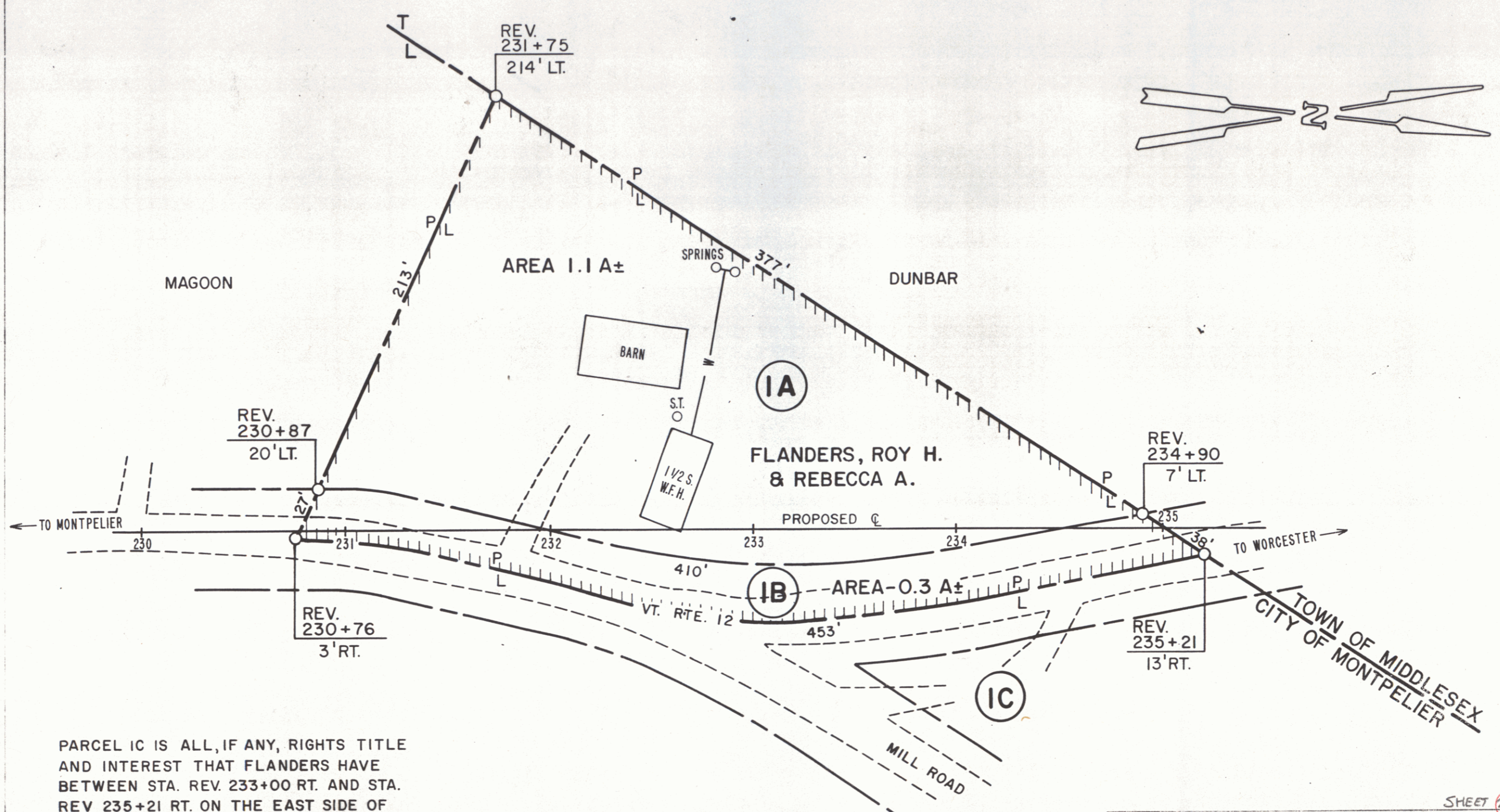
CITY OF MONTPELIER

APPROX. SCALE: 1" = 50' DATE 7-28-86 DRAWN BY M.J.R.

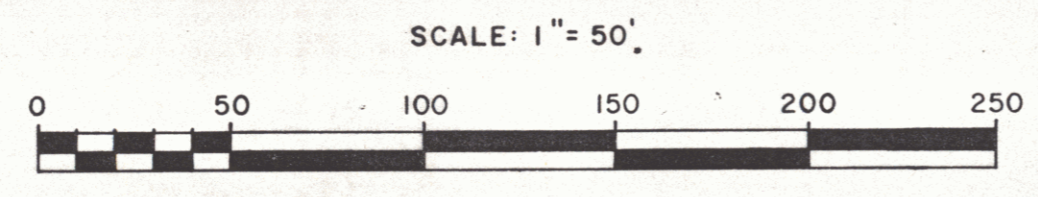
*vt. 12*

*26*

23



PARCEL IC IS ALL, IF ANY, RIGHTS TITLE AND INTEREST THAT FLANDERS HAVE BETWEEN STA. REV. 233+00 RT. AND STA. REV. 235+21 RT. ON THE EAST SIDE OF ROUTE 12 INCLUDING THE EXISTING HWY EASEMENT.



SHEET 25B

STATE OF VERMONT  
AGENCY OF TRANSPORTATION

CITY OF MONTPELIER

PROJECT M 6400 (8)

APPROX. SCALE 50' DATE 7/20/81 DRAWN BY B.A.M.

27