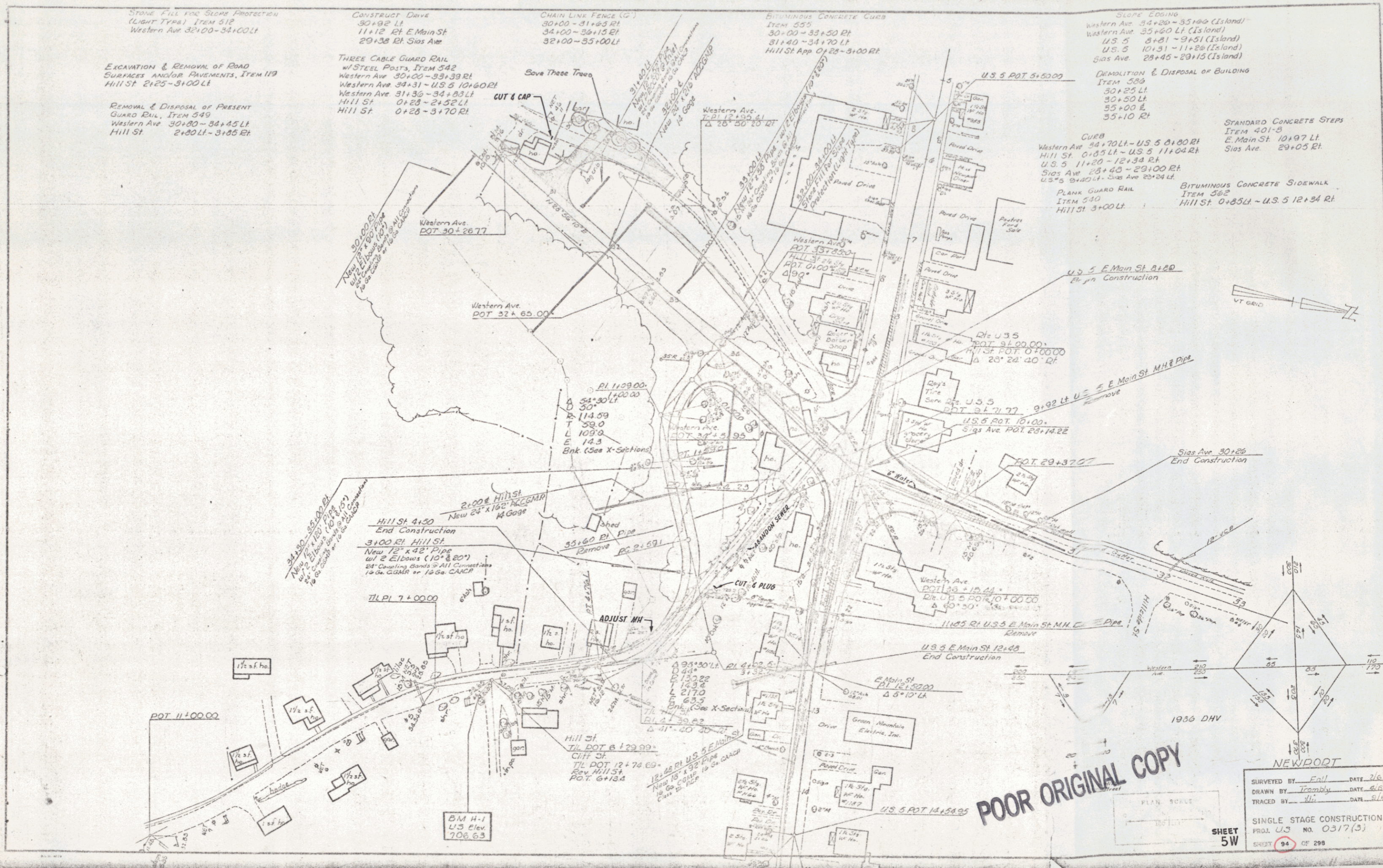


- STONE FILL FOR SLOPE PROTECTION (LIGHT TYPE) ITEM 512
Western Ave 32+00-34+00 Lt
- CONSTRUCT DRIVE
30+92 Lt
11+12 Rt. E. Main St
29+38 Rt. Sias Ave
- CHAIN LINK FENCE (G)
30+00-31+05 Rt
34+00-35+15 Rt
32+00-35+00 Lt
- BITUMINOUS CONCRETE CURB
ITEM 555
30+00-33+50 Rt
31+40-34+70 Lt
Hill St App 0+28-3+00 Rt
- SLOPE CODING
Western Ave 34+20-35+00 (Island)
Western Ave 35+00 Lt (Island)
U.S. 5 3+81-3+51 (Island)
U.S. 5 10+31-11+20 (Island)
Sias Ave 28+45-29+15 (Island)
- DEMOLITION & DISPOSAL OF BUILDING
ITEM 509
32+25 Lt
30+50 Lt
55+00 E
35+10 Rt
- EXCAVATION & REMOVAL OF ROAD SURFACES AND/OR PAVEMENTS, ITEM 119
Hill St 2+25-3+00 Lt
- THREE CABLE GUARD RAIL w/ STEEL POSTS, ITEM 542
Western Ave 30+00-33+39 Rt
Western Ave 34+31-U.S. 5 10+60 Rt
Western Ave 31+30-34+03 Lt
Hill St 0+23-2+52 Lt
Hill St 0+23-3+70 Rt
- REMOVAL & DISPOSAL OF PRESENT GUARD RAIL, ITEM 549
Western Ave 30+30-34+45 Lt
Hill St 2+20 Lt-3+05 Rt
- STANDARD CONCRETE STEPS
ITEM 401-5
E. Main St 10+97 Lt
Sias Ave 29+05 Rt
- CURB
Western Ave 34+70 Lt-U.S. 5 0+00 Rt
Hill St 0+05 Lt-U.S. 5 11+04 Rt
U.S. 5 11+20-12+38 Rt
Sias Ave 28+45-29+00 Rt
U.S. 5 3+40 Lt-Sias Ave 20+24 Lt
- BITUMINOUS CONCRETE SIDEWALK
ITEM 502
Hill St 0+85 Lt-U.S. 5 12+34 Rt
- PLANK GUARD RAIL
ITEM 510
Hill St 3+00 Lt



POOR ORIGINAL COPY

NEWDOT

SURVEYED BY Enl DATE 2/67
 DRAWN BY Tranby DATE 6/67
 TRACED BY JL DATE 8/69

SINGLE STAGE CONSTRUCTION
 PROJ. U.S. NO. 0317(3)
 SHEET 94 OF 296

SHEET 5W