

REMOVAL & DISPOSAL OF
PRESENT GUARD RAIL, ITEM 549
17+80 - 18+00 Lt Clyde St

24+60 Rt Western Ave
P.O.C. 141+1089+
Western Ave
R.O.T. 201+01

POST 141+1100+
Western Ave
R.O.T. 20+00
Δ 88°01'

EXCAVATION & REMOVAL OF ROAD
SURFACES AND/OR PAVEMENTS, ITEM 119
22+80 - 24+60 Rt
24+75 - 25+40 Rt

THREE CABLE GUARD RAIL
W/STEEL POSTS, ITEM 542
140+12 Rt - 21+10 Rt
19+97 Rt (Clyde St) - 22+93 Rt (Western Ave)
22+39 Lt - 22+35 Lt
24+25 Rt - 30+00 Rt
24+25 Lt - 24+37 Lt

CHAIN LINK FENCE (C)
21+00 - 21+30 Rt
22+80 - 23+35 Rt
24+00 - 30+00 Rt
20+70 - 23+00 Lt
23+85 - 30+00 Lt

REMOVAL OF PRESENT
SUPERSTRUCTURE
24+70 Rt

STONE FILL FOR SLOPE PROTECTION
(LIGHT TYPE) ITEM 512
Western Ave 21+50 Lt - 23+05 Lt
Channel P.O.T.
4+31.00

ONE COURSE CEMENT SIDEWALK
ITEM 580
142+63 Rt - Western Ave 22+27 Lt (274')

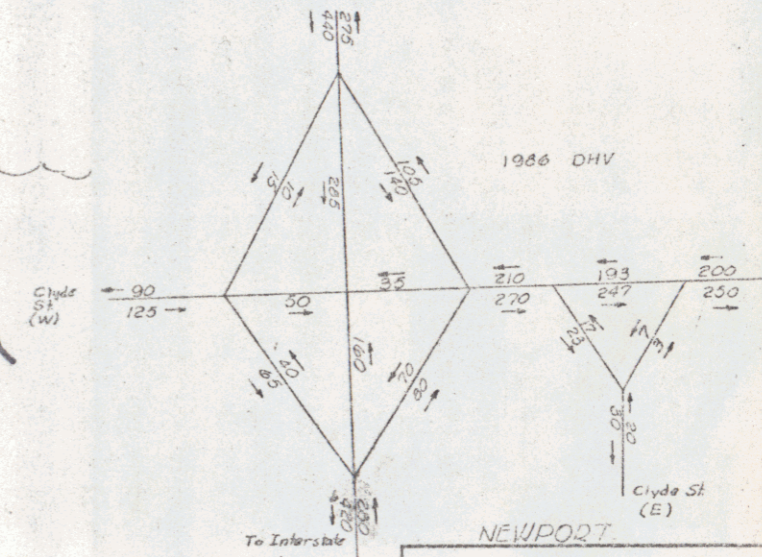
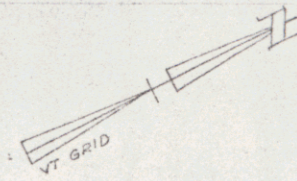
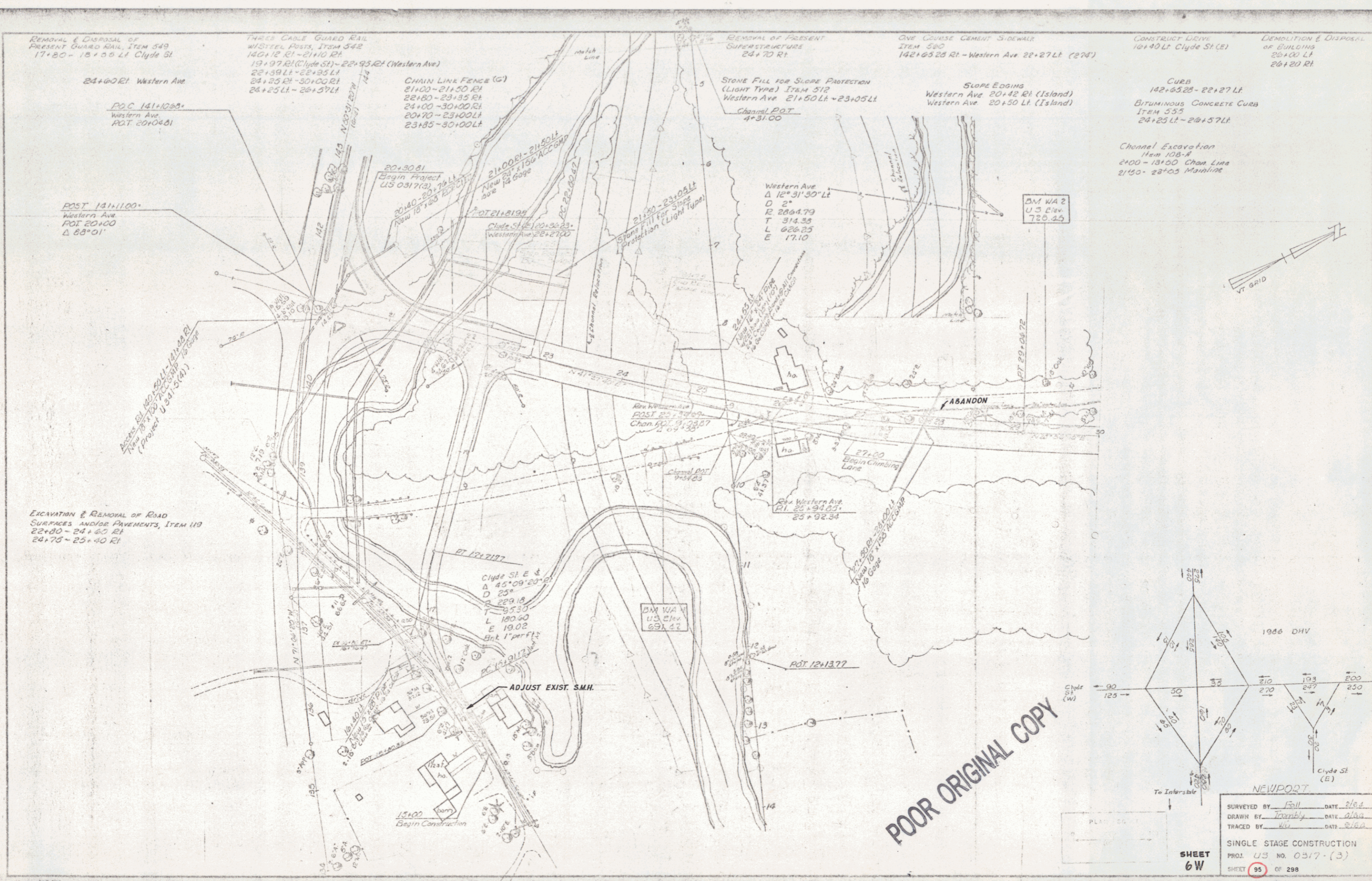
SLOPE EDGING
Western Ave 20+42 Rt (Island)
Western Ave 20+50 Lt (Island)

CONSTRUCT DRIVE
10+40 Lt Clyde St (E)

DEMOLITION & DISPOSAL
OF BUILDING
20+00 Lt
24+20 Rt

CURB
142+63 Rt - 22+27 Lt
BITUMINOUS CONCRETE CURB
ITEM 555
24+25 Lt - 24+37 Lt

Channel Excavation
Item 108-A
2100 - 13+00 Chan Line
2150 - 23+05 Mainline



POOR ORIGINAL COPY

SURVEYED BY	Full	DATE	2/64
DRAWN BY	Traphy	DATE	2/64
TRACED BY	W	DATE	2/64
SINGLE STAGE CONSTRUCTION			
PROJ. U.S. NO. 0517-(3)			
SHEET 6W		SHEET 95 OF 298	

8