

STATE OF VERMONT DEPARTMENT OF HIGHWAYS PROPOSED IMPROVEMENT FEDERAL AID SECONDARY

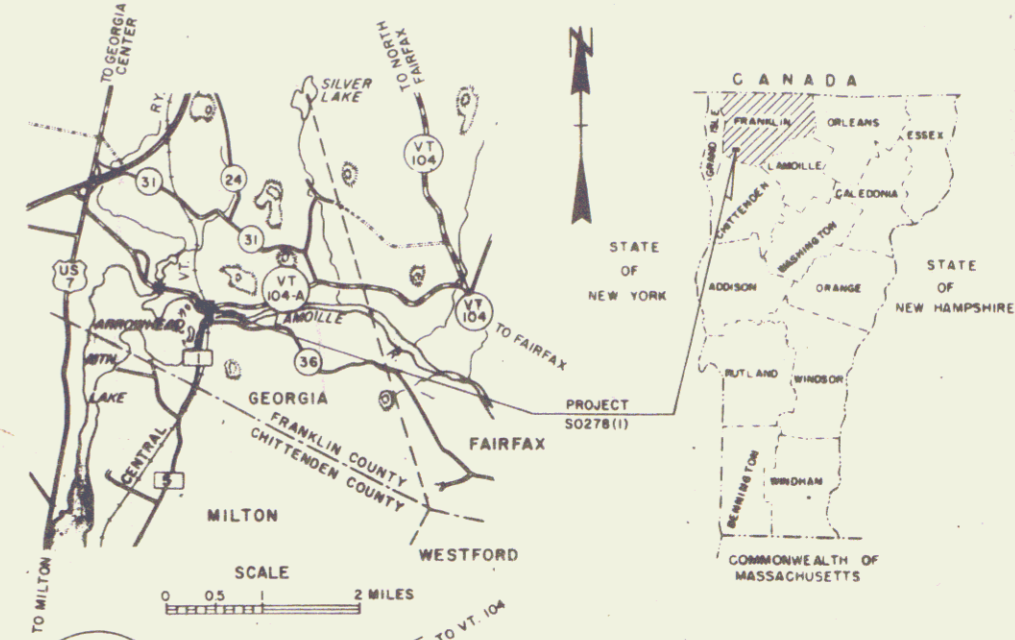
TOWN OF GEORGIA COUNTY OF FRANKLIN VERMONT ROUTE 104-A EAST GEORGIA-FAIRFAX ROAD

BEGINNING AT A POINT APPROXIMATELY 1.802 MILES
WESTERLY OF THE GEORGIA-FAIRFAX TOWN LINE AND
EXTENDING EASTERLY 0.227 MILES.

LENGTH OF PROJECT 1200 FEET = 0.227 MILES

1972 ADT 485
1992 ADT 810
1992 DMV 130
V = 40 MPH
D = 62%
T = 7%

R.O.W. PLANS



BEGIN R.O.W. PROJECT S0278 (1)
STA. 93+00 LT.

STA 94+00
BEGIN PROJECT S0278 (1)
MP 1.567

LENGTH OF R.O.W. PROJECT 1489 FEET = 0.282 MILES

REV. STA. 106+00
END PROJECT S0278 (1)
MP 1.744

REV. STA. 110+65.0 =
SURV. STA. 110+87.6
EQ. = -22.6'

END R.O.W. PROJECT S0278 (1)
STA. 107+89 LT.

BENCH MARKS BASED ON USGS ELEVATIONS

- CONVENTIONAL SIGNS
- POINT OF ACCESS ----- X
 - LIMITS OF ACCESS -----
 - COUNTY LINE -----
 - TOWN LINE -----
 - FENCE LINE -----
 - STONE WALL -----
 - UNFENCED PROPERTY -----
 - GUARD RAIL -----
 - TRAVELED WAY -----
 - RAILROAD -----
 - RETAINING WALL -----
 - CENTER LINE -----
 - SURVEY LINE -----
 - CULVERT -----
 - DROP INLET -----
 - TROLLEY POLE -----
 - POWER POLE -----
 - TELEPHONE POLE -----
 - TREES -----
 - HEDGE -----
 - F.A. CONSTRUCTION IDENTIFICATION SIGNS -----

- SLOPE RIGHTS
- GROUND ELEVATION
- GRADE ELEVATION
- CURVE DATA
- DEFLECTION OF ANGLE A
 - DEGREE OF CURVE D
 - RADIUS OF CURVE R
 - TANGENT DISTANCE T
 - LENGTH OF CURVE L
 - EXTERNAL DISTANCE E
 - POINT OF INTERSECTION P.I.
 - POINT OF CURVE P.C.
 - POINT OF TANGENT P.T.
 - POINT ON TANGENT P.O.T.
 - POINT ON SUB-TANGENT P.O.S.T.
 - R.O.W. LIMITS P.O.S.T.

93+00 - REV 107+50
CONSTRUCTION AREA



RIGHT-OF-WAY DIVISION
TOWN FILE
PERPETUAL
Town of VT 104 A
(To Be Returned To R.O.W. Division)

THESE RIGHT-OF-WAY PLANS
ARE SUBJECT TO SUCH ENGINEERING CHANGES AS MAY BE
REQUIRED BY THE FEDERAL HIGHWAY ADMINISTRATION OR THE CHIEF
ENGINEER.
CONSTRUCTION IS TO BE CARRIED ON IN ACCORDANCE WITH
THESE PLANS AND THE STANDARD SPECIFICATIONS FOR HIGHWAY AND BRIDGE
CONSTRUCTION DATED JANUARY 8, 1972 AS APPROVED BY THE FEDERAL
HIGHWAY ADMINISTRATION FOR USE ON THIS PROJECT; INCLUDING ALL
SUBSEQUENT APPROVED REVISIONS AND SUCH SUPPLEMENTAL
SPECIFICATION AND SPECIAL PROVISIONS AS ARE INCORPORATED
IN THESE PLANS.

Pin# 68C121

APPROVED DATE 5-22-72	APPROVED DATE 5/23/72	PROJECT S NO 0278 (1)	SHEET 1 OF 9 SHEETS
--------------------------	--------------------------	-----------------------	---------------------

DEPARTMENT OF TRANSPORTATION FEDERAL HIGHWAY ADMINISTRATION	
APPROVED	DATE
DIVISION ENGINEER	DATE
PROJECT S NO 0278 (1)	
SHEET 1 OF 9 SHEETS	

STATE OF VERMONT
DEPARTMENT OF HIGHWAYS
RIGHT-OF-WAY PLANS
DETAIL SHEET
1 OF 1

TABLE OF PROJECT PROPERTY ACQUISITION

PARCEL NO.	GRANTOR	SHEET NO.	BEGINNING STATION	ENDING STATION	TAKING	REM.	RIGHTS	TITLE TAKEN	DATE	TOWN OR CITY RECORDED	BK.	PG.	REMARKS
1A	SHEPARD, JED H. & DORIS L.	5,6	93+00 LT.	95+55 LT.	0.14 A±								
B		6	94+51 LT.	96+69 LT.	0.12 A±								
C		6	95+18 LT.	98+28 LT.	0.22 A±								
		5,6	93+00 LT.	97+78 LT.		13.52 A±							
		6	94+90 LT.	95+90 LT.			DRIVE (T)						
				TOTALS	0.48 A±	13.52 A±							
2A	CENTRAL VERMONT RAILWAY INC.	6	94+51 LT.	96+69 LT.	0.12 A±	N/A	ALL R.T.B.I						RAILROAD RIGHT OF WAY
B		6	97+78 LT.	100+58 LT.			CROSSING EASEMENT (P) 0.7 A±						
C		6	98+77 RT.	100+76 RT.			CROSSING EASEMENT (P) 0.35 A±						
		6	98+86 LT.	99+02 LT.			CULVERT (P)						
		6	99+10 RT.	99+21 RT.			CULVERT, DITCHING & DRAINAGE (P)						
		6	98+60 LT.	100+24 LT.			CULVERT & DITCHING (P)						
		6	100+58 RT.	100+68 RT.			CULVERT (P)						
3	CROSS, BEATRICE G.	6	100+28 LT.	101+27 LT.	0.2 A±	NONE	ALL R.T.B.I.						HOUSE & WELL WELL ON RAILROAD PROPERTY
4	WELLS, DOROTHY S.	6	102+09 LT.	103+34 LT.	0.2 A±								
		8	107+89 LT.	112+25 LT.		3.55 A±							
5	MRAZ, WILLIAM A. & PATRICIA B.	6,8	103+31 LT.	107+89 LT.	0.5 A±	2695 A±							
6A	CENTRAL VERMONT PUBLIC SERVICE CORP.	6	96+60 RT.	99+09 RT.	N/A	N/A	SLOPE (P) 0.35 A±						
B		6	100+68 RT.				DITCHING & DRAINAGE (P)						
7A	TOWN OF GEORGIA	6	102+84 RT.		N/A	N/A	CULVERT & DRAINAGE (P)						
B		6	105+85 RT.				CULVERT & DRAINAGE (P)						
C		6,8	105+77 RT.	107+20 RT.			SLOPE (P) 0.06 A±						2700 SF ±

TABLE OF REVISIONS

REVISION NO.	SHEET NO.	DESCRIPTION OF REVISION	DATE	MADE BY	APPROVED BY
1	4	Parcel #1 Spelling Change From Shepard to Shepard R. Change Order # 2356		KNO	R.G.G.

MADE BY: J.T.A. DATE: 5-23-72
CHECKED BY: ABB DATE: 5-24-72

DR. RT. - DRAINAGE RIGHT
DIT. RT. - DITCHING RIGHT
CH. RT. - CHANNEL RIGHT
DRIVE RT. - DRIVE RIGHT
CUL. RT. - CULVERT RIGHT
D - DEMOLITION OR REMOVAL
W - WATER SOURCES

PRESENT R.O.W.
- - - - - TAKING WITHOUT ACCESS
- - - - - TAKING WITHOUT ACCESS ALONG PROPERTY LINES
- - - - - TAKING WITH ACCESS
(P) PERMANENT EASEMENT
(T) TEMPORARY EASEMENT

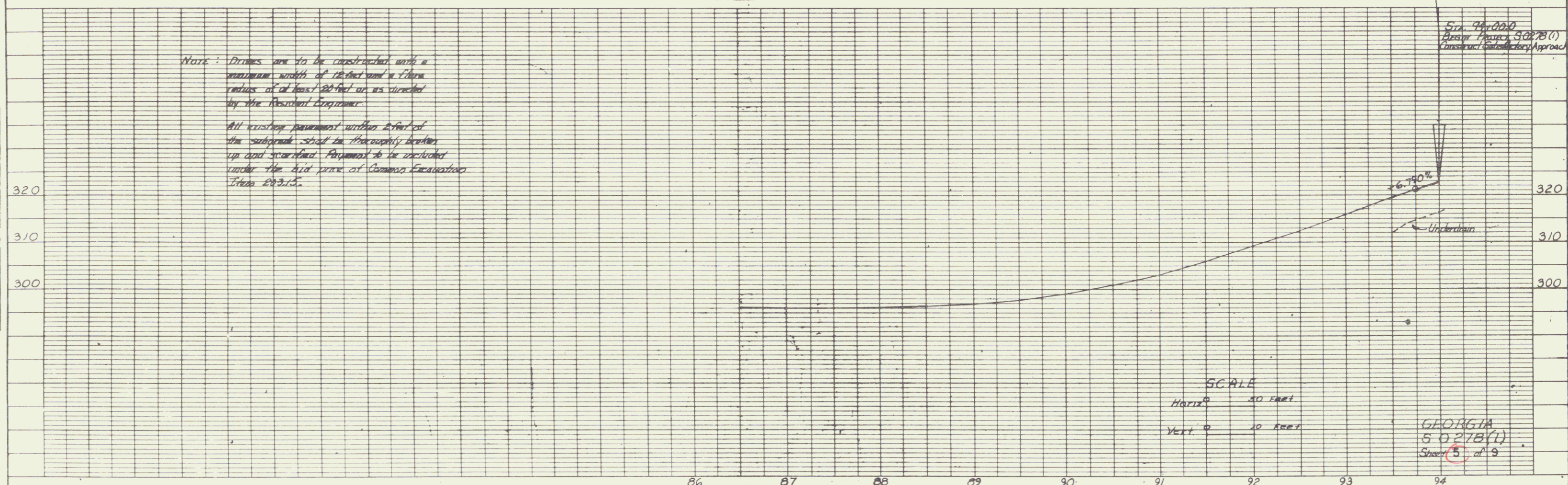
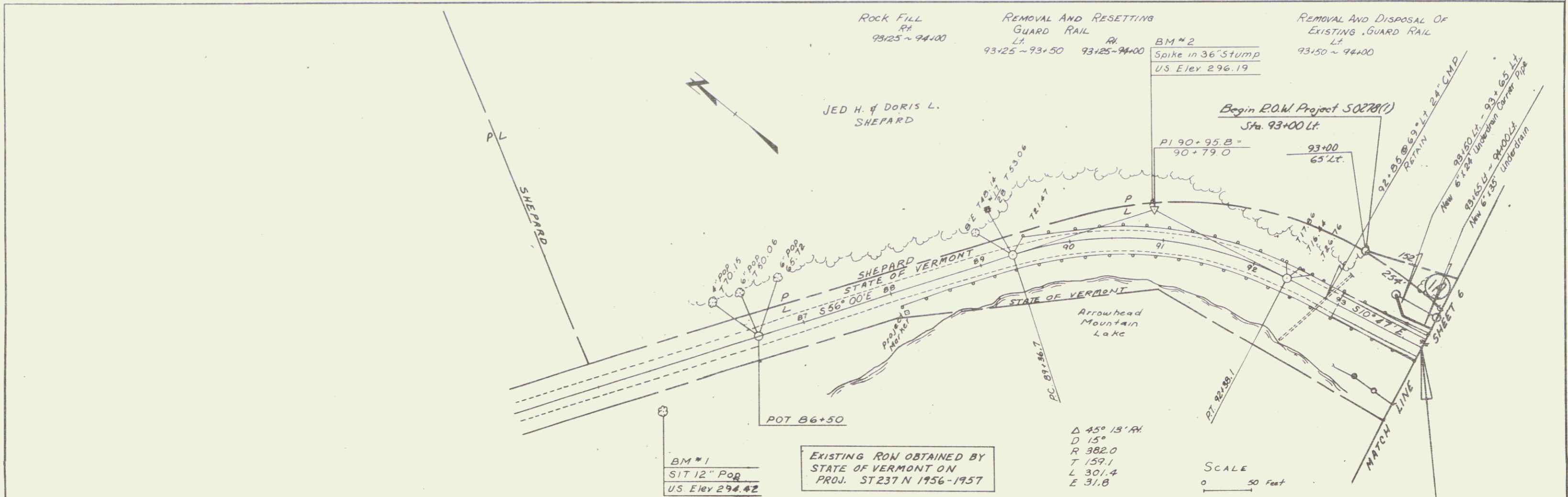
LEGEND
SR - SR - SLOPE RIGHTS
P - P - PROPERTY LINE
- Δ - Δ - TOP OF CUT
- O - O - TOE OF SLOPE

APPROVED: [Signature] DATE: 5-23-72
CHIEF OF PLANS & TITLES
APPROVED: _____ DATE: _____
APPROVED: _____ DATE: _____
R.O.W. DIRECTOR

PROJECT GEORGIA
NO. S0278(1)
SHEET 4 OF 9

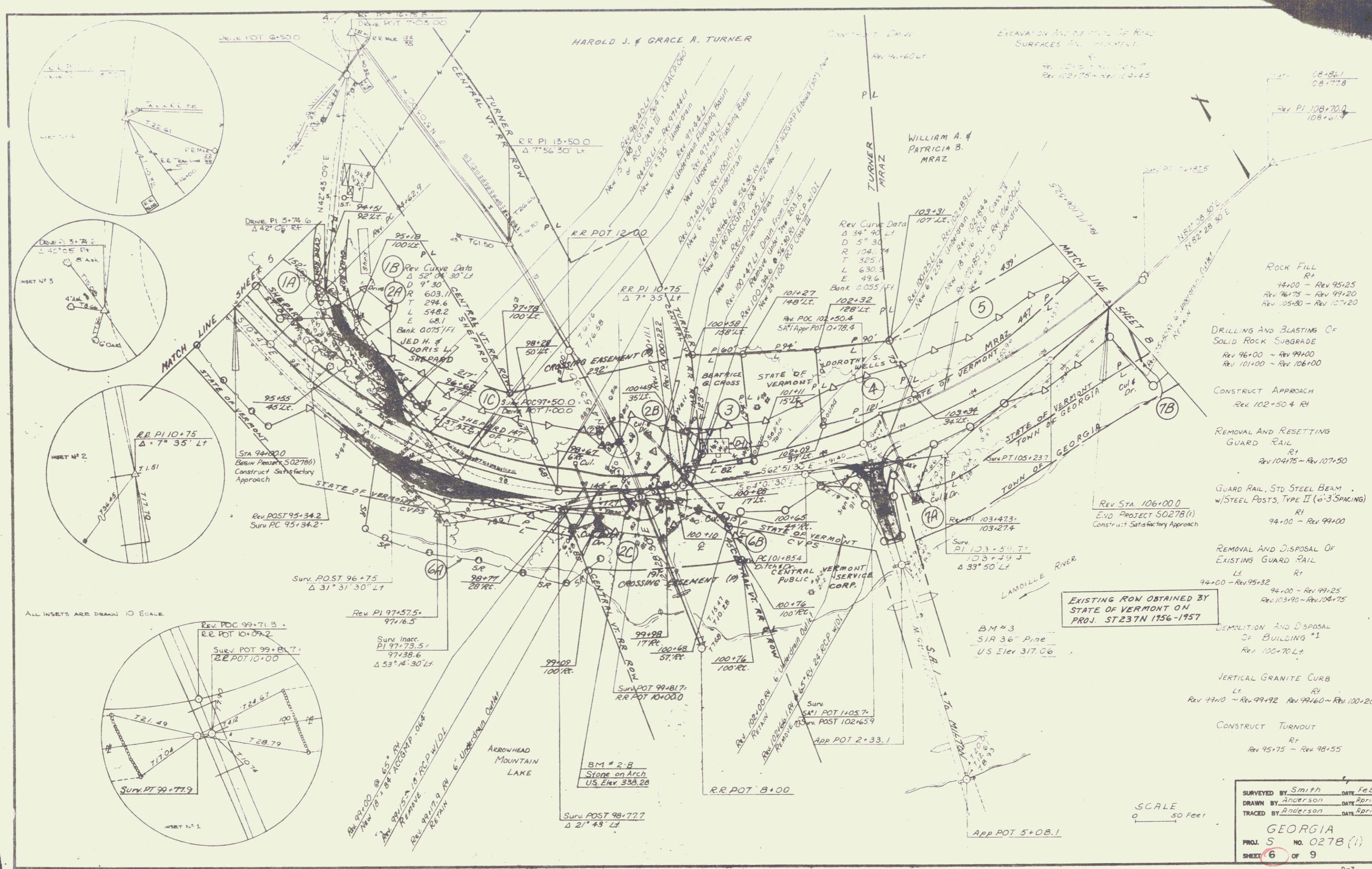
PLAN
 DESIGNED BY: [Signature]
 CHECKED BY: [Signature]
 DATE: 3/7/77
 SHEET NO. 5 OF 9

PROFILE
 DESIGNED BY: [Signature]
 CHECKED BY: [Signature]
 DATE: 3/7/77
 SHEET NO. 5 OF 9



Sta. 94+00.00
 Begin Project 5027B(1)
 Construct Substructure Approach

GEORGIA
 5027B(1)
 Sheet 5 of 9

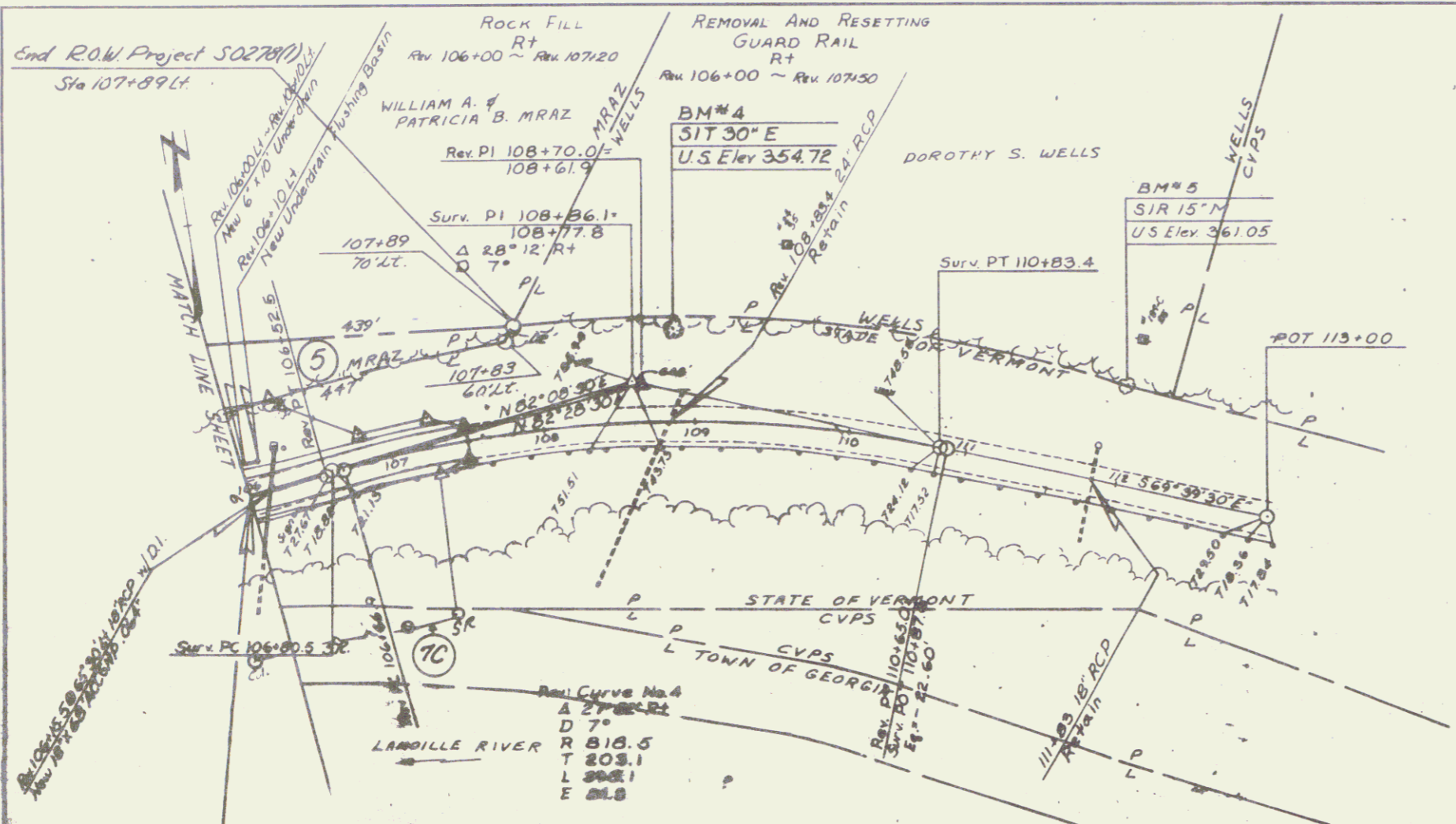


ALL INSETS ARE DRAWN TO SCALE

EXISTING ROW OBTAINED BY STATE OF VERMONT ON PROJ. ST 237N 1956-1957

SCALE
0 50 Feet

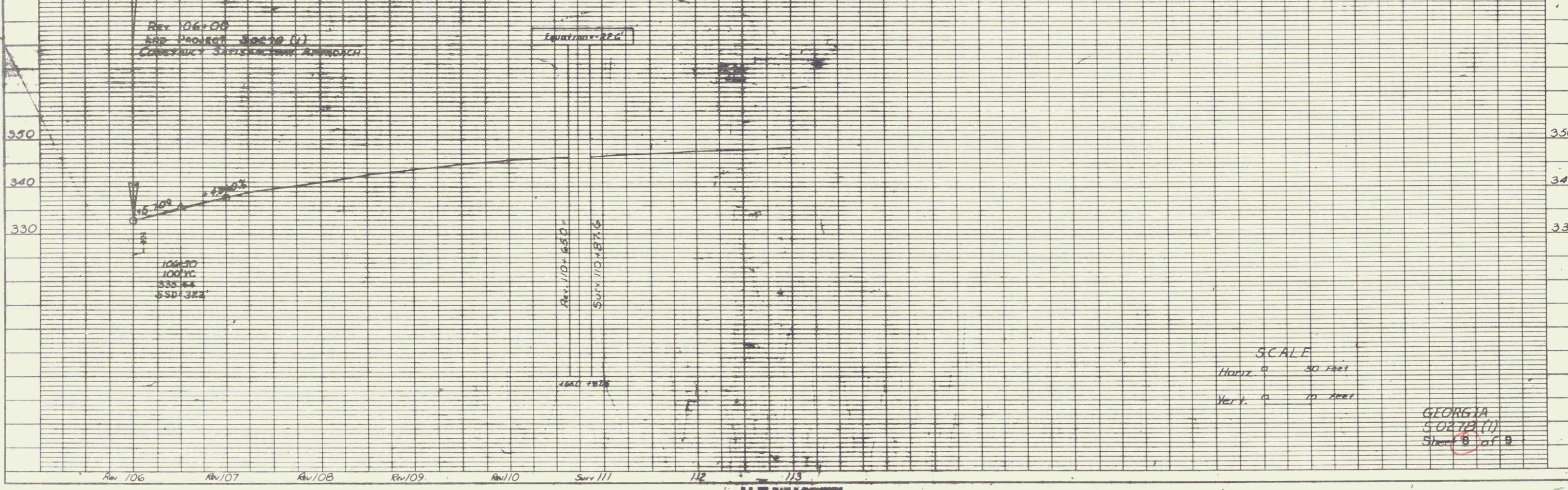
SURVEYED BY Smith DATE Feb 71
 DRAWN BY Anderson DATE April 71
 TRACED BY Anderson DATE April 71
 GEORGIA
 PROJ. 5 NO. 0278 (1)
 SHEET 6 OF 9



EXISTING ROW OBTAINED BY STATE OF VERMONT ON PROJ. ST 237N 1956-1957

SCALE
0 50 FEET

DATE	REV
12/17/77	1
12/17/77	2
12/17/77	3
12/17/77	4
12/17/77	5
12/17/77	6
12/17/77	7
12/17/77	8
12/17/77	9
12/17/77	10
12/17/77	11
12/17/77	12
12/17/77	13
12/17/77	14
12/17/77	15
12/17/77	16
12/17/77	17
12/17/77	18
12/17/77	19
12/17/77	20
12/17/77	21
12/17/77	22
12/17/77	23
12/17/77	24
12/17/77	25
12/17/77	26
12/17/77	27
12/17/77	28
12/17/77	29
12/17/77	30
12/17/77	31
12/17/77	32
12/17/77	33
12/17/77	34
12/17/77	35
12/17/77	36
12/17/77	37
12/17/77	38
12/17/77	39
12/17/77	40
12/17/77	41
12/17/77	42
12/17/77	43
12/17/77	44
12/17/77	45
12/17/77	46
12/17/77	47
12/17/77	48
12/17/77	49
12/17/77	50
12/17/77	51
12/17/77	52
12/17/77	53
12/17/77	54
12/17/77	55
12/17/77	56
12/17/77	57
12/17/77	58
12/17/77	59
12/17/77	60
12/17/77	61
12/17/77	62
12/17/77	63
12/17/77	64
12/17/77	65
12/17/77	66
12/17/77	67
12/17/77	68
12/17/77	69
12/17/77	70
12/17/77	71
12/17/77	72
12/17/77	73
12/17/77	74
12/17/77	75
12/17/77	76
12/17/77	77
12/17/77	78
12/17/77	79
12/17/77	80
12/17/77	81
12/17/77	82
12/17/77	83
12/17/77	84
12/17/77	85
12/17/77	86
12/17/77	87
12/17/77	88
12/17/77	89
12/17/77	90
12/17/77	91
12/17/77	92
12/17/77	93
12/17/77	94
12/17/77	95
12/17/77	96
12/17/77	97
12/17/77	98
12/17/77	99
12/17/77	100



SCALE
Horiz 0 50 FEET
Vert 0 10 FEET

GEORGIA
S.O.R. (1)
Sheet 8 of 8