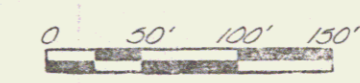
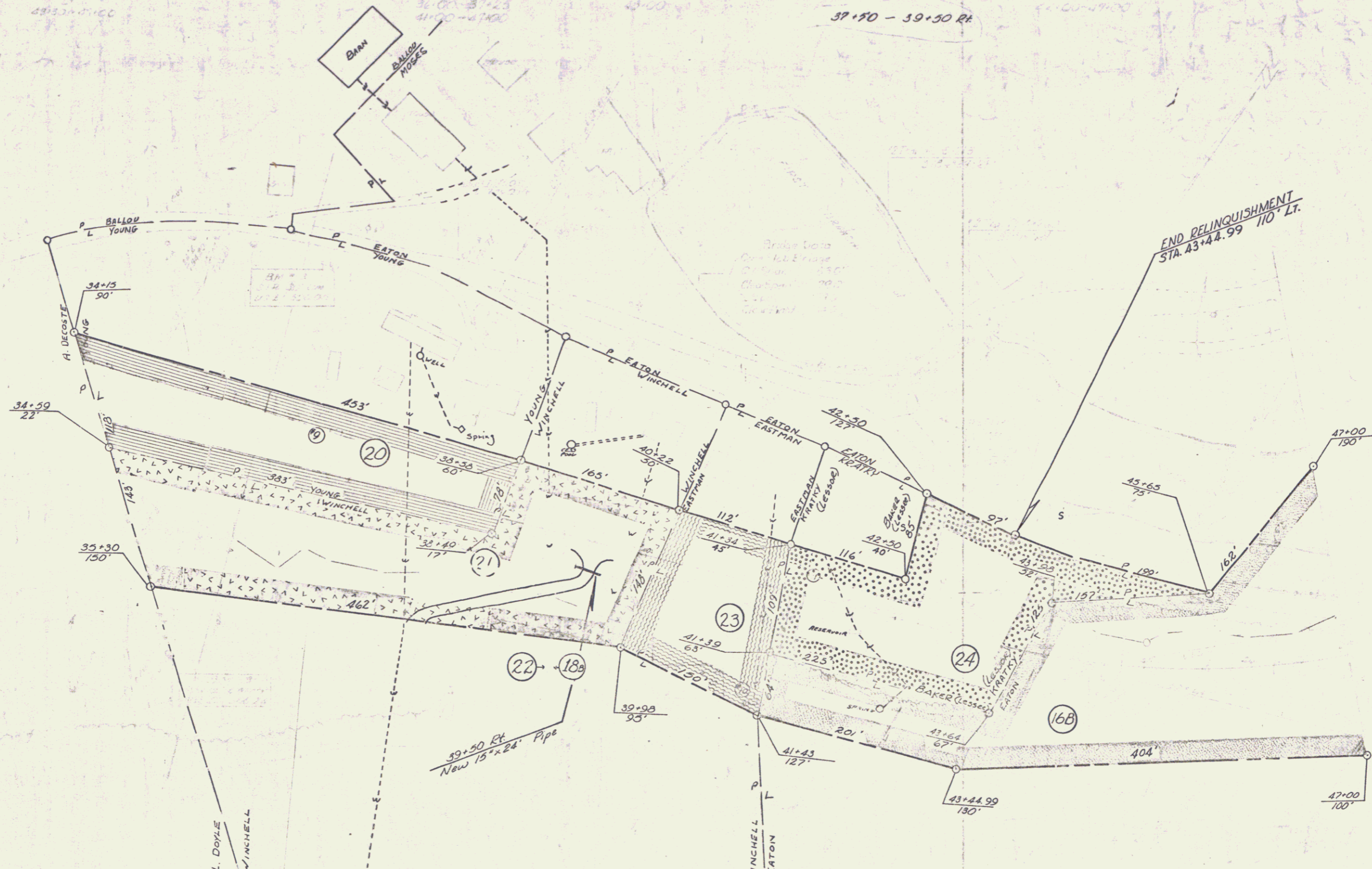


**DEMOLITION AND DISPOSAL
OF BUILDINGS**

#7 36' x 72' LT. SHED
#8 41' x 30' LT. SHED
EXCAVATION AND REMOVAL OF ROAD
AND BRICK PAVEMENT - 1150' LT.
4110-42100



VERMONT DEPARTMENT OF HIGHWAYS
RIGHT-OF-WAY PLANS
PROJECT ROYALTON - TUNBRIDGE
NO 50169 (1)
SHEET 19 OF 35