

**INDEX OF SHEETS**

1.	Title Sheet
2-4.	Typical Cross Sections of Improvements
5-7.	Quantity Sheets
8-10.	Drainage Sheets
11-16.	Earthworks
17-26.	ROW Detail Sheets
27-43.	Plan and Profile
44.	A-61 Solid Rock Excavation
45.	B-1 Banking Tables
46.	B-5 Typical Slope Grading
47.	B-10 Enhancement on a Slope
48.	B-11 Methods of Slope Stabilization
49.	C-1 Bituminous Concrete Sidewalk
50.	C-15 Curbs
51.	C-2a Curbs at Drives
52.	C-2b Curbs at Drives
53.	D-2 Underdrain and Headwalls
54.	D-3 Treated Gutters
55.	D-4 Elbows and Flushing Basins
56.	D-6 Drop Inlets
57.	D-8 Drop Inlets
58.	D-9 Drop Inlet Tops
59.	D-10 Drop Inlet Tops
60.	D-11 Grates
61.	D-15 Manholes, Type III
62.	D-16 Drop Inlet, Type II
63.	E-31 Federal Aid Construction Identification Signs
64.	E-32 Road Construction Approach Signs
65.	E-33 Bridge Construction Approach Signs
66.	F-9 On-Project Construction Signs
67.	G-3 Guard Rail
68.	G-4 Steel Marker Posts and Guide Posts
69.	F-8 Bridge Railing
70.	J-1 Project Markers
71.	J-2 Metal Hand Railing
72-80.	BR 100-BR 108
81-85.	BR 201-BR 205
86-95.	BR 306-BR 302
88A.	SCB-D1-67-Details of WF Beam Bridges
88B.	SCB-D2-67-Details of WF Beam Bridges
88C.	SCB-D3-67-Details of WF Beam Bridges
88D.	SCB-D5-67-Details of WF Beam Bridges
88E.	SCB-D6-67-Details of WF Beam Bridges
88F.	SCB-D7-67-Details of WF Beam Bridges
88G.	SCB-D8-67-Details of WF Beam Bridges
88H.	SB-R1-64-Alum. Bridge Railing Details
88I.	SB-R1-64-Alum. Bridge Railing Details
88J.	SB-R2-65-Steel. Bridge Railing Details
88K.	F-2 Galv. Chain Line Fence
89-90.	Utilities
91-100.	Cross Sections
101.	Channel Sections
102-109.	Banking Transition Diagrams

**STATE OF VERMONT  
DEPARTMENT OF HIGHWAYS  
ROYALTON-TUNBRIDGE SO169(I) BIT. CONC. 33,259 S.Y.  
RECORD PLANS  
MATERIALS**

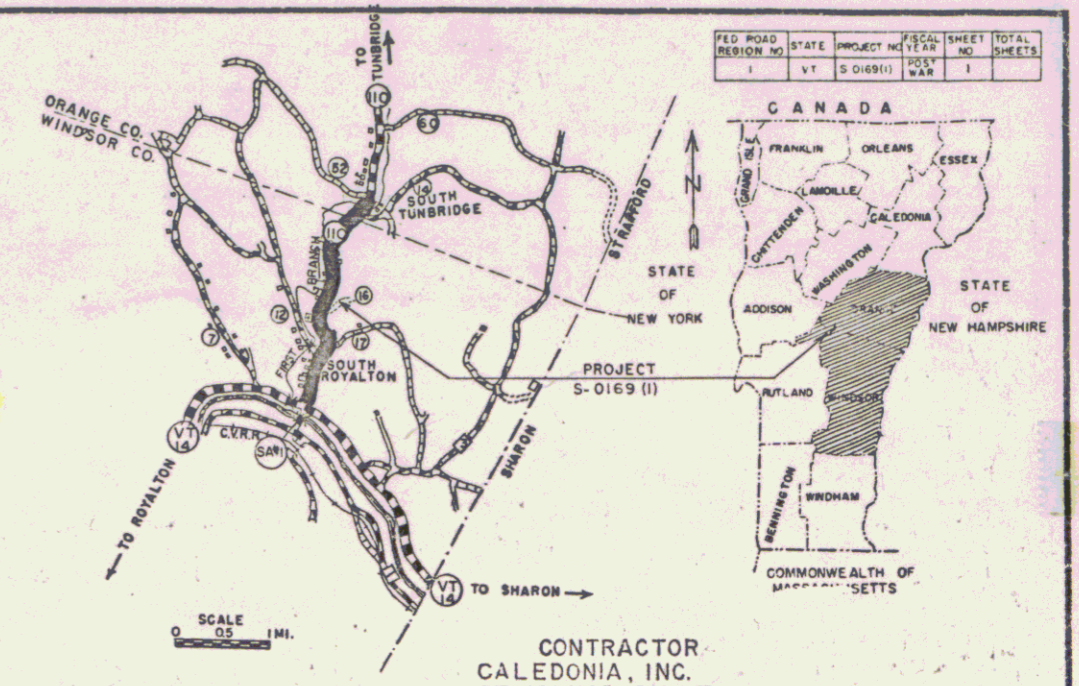
**PROPOSED IMPROVEMENT**  
FEDERAL AID SECONDARY

**TOWNS OF ROYALTON - TUNBRIDGE  
COUNTIES OF ORANGE - WINDSOR  
VERMONT ROUTE 110**

BEGINNING AT THE JUNCTION OF VT. RTES. 14 AND 110, 2.32 MILES  
SOUTH OF THE ROYALTON-TUNBRIDGE TOWN LINE, AND EXTENDING  
NORTH 2.577 MILES

LENGTH OF ROADWAY 13,457.9' = 2.549 MI.  
LENGTH OF BRIDGE 148 FT. = 0.028 MI.  
LENGTH OF PROJECT 13,605.9' = 2.577 MI.

1965 ADT	820
1985 ADT	1130
1985 DHV	180
D	6.4%
T	6%
V	50 MPH

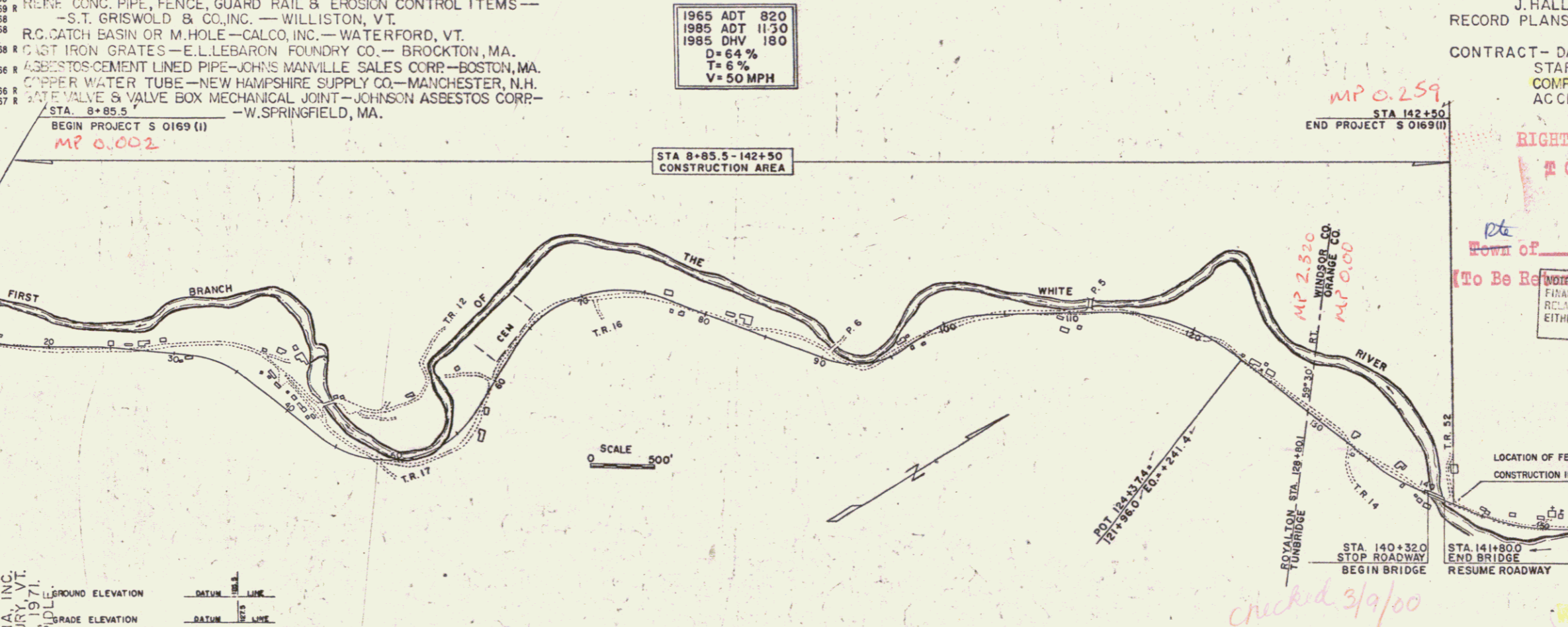


NOTE: FOR R.O.W. DETAILS SEE R.O.W. DETAIL SHEETS FOR THIS PROJECT.



**CONVENTIONAL SIGNS**

RIGHT-OF-WAY	[Symbol]
SLOPE RIGHTS	[Symbol]
COUNTY LINE	[Symbol]
TOWN LINE	[Symbol]
FENCE LINE	[Symbol]
STONE WALL	[Symbol]
UNFENCED PROPERTY	[Symbol]
GUARD RAIL	[Symbol]
TRAVELED WAY	[Symbol]
RAILROAD	[Symbol]
PFTAINING WALL	[Symbol]
CENTER LINE	[Symbol]
SURVEY LINE	[Symbol]
GULVERT	[Symbol]
DROP INLET	[Symbol]
TROLLEY POLE	[Symbol]
POWER POLE	[Symbol]
TELEPHONE POLE	[Symbol]
TREES	[Symbol]
MEDE	[Symbol]



CONTRACTOR  
CALEDONIA, INC.  
ST. JOHNSBURY, VT.  
RESIDENT ENGINEER—THOMAS K. PIERCE.  
ASSIST. RES. ENG.—RODERICK J. MACLAY.  
INSPECTORS—W.R. STODDARD, D.W. NEWTON, F.  
J. HALL, JR. & R.C. LANCE.  
RECORD PLANS—A.G. SPIDLE.

CONTRACT—DATED—FEBRUARY 11, 1970.  
STARTED—FEBRUARY 16, 1970.  
COMPLETED—JULY 30, 1971.  
ACCEPTED—JULY 30, 1971.

RIGHT-OF-WAY DIVISION  
TOWN FIDE  
PERPETUAL  
Town of UT 110  
(To Be Repealed by Further Information Concerning Final Quantities, Amounts or Other Details Relative to this Project May be Found in either the Field Books or the Estimate File.)

THESE PLANS ARE SUBJECT TO SUCH REVISIONS AS MAY BE REQUIRED BY THE BUREAU OF PUBLIC ROADS OR THE COMMISSIONER OF HIGHWAYS.  
CONSTRUCTION IS TO BE CARRIED ON IN ACCORDANCE WITH THESE PLANS AND THE STANDARD SPECIFICATIONS FOR HIGHWAY AND BRIDGE CONSTRUCTION DATED APRIL 1964, AS APPROVED BY THE BUREAU OF PUBLIC ROADS ON OCTOBER 12, 1964, INCLUDING ALL SUBSEQUENT APPROVED REVISIONS AND SUCH REVISED SPECIFICATIONS AND SPECIAL PROVISIONS AS ARE INCORPORATED IN THESE PLANS.

APPROVED: <i>[Signature]</i> DATE: 7/3/69 CONSTRUCTION ENGINEER	APPROVED: <i>[Signature]</i> DATE: 7/3/69 ASSISTANT ENGINEER	APPROVED: <i>[Signature]</i> DATE: 7/3/69 ASSISTANT ENGINEER	APPROVED: <i>[Signature]</i> DATE: 12/20/65 BRIDGE ENGINEER	APPROVED: <i>[Signature]</i> DATE: 12/20/65 DISTRICT ENGINEER	APPROVED: <i>[Signature]</i> DATE: 12/20/65 HIGHWAY ENGINEER	APPROVED: <i>[Signature]</i> DATE: 1/18/66 CHIEF ENGINEER
---	--	--	---	---	--	---

DEPARTMENT OF TRANSPORTATION  
BUREAU OF PUBLIC ROADS

APPROVED: \_\_\_\_\_  
DIVISION ENGINEER DATE \_\_\_\_\_

PROJECT S NO. 0169(I)  
SHEET 1 OF 164 SHEETS

UT 110

MP 0.259  
STA 142+50  
END PROJECT S 0169(I)

MP 2.520  
WINDSOR CO.  
ORANGE CO.

STA 140+30  
STOP ROADWAY  
BEGIN BRIDGE

STA 141+800  
END BRIDGE  
RESUME ROADWAY

Pin # 68C116

checked 3/9/00