

THREE CABLE GUARD RAIL
1/4" STEEL POSTS, ITEM 538
333+00 - 342+07.1L

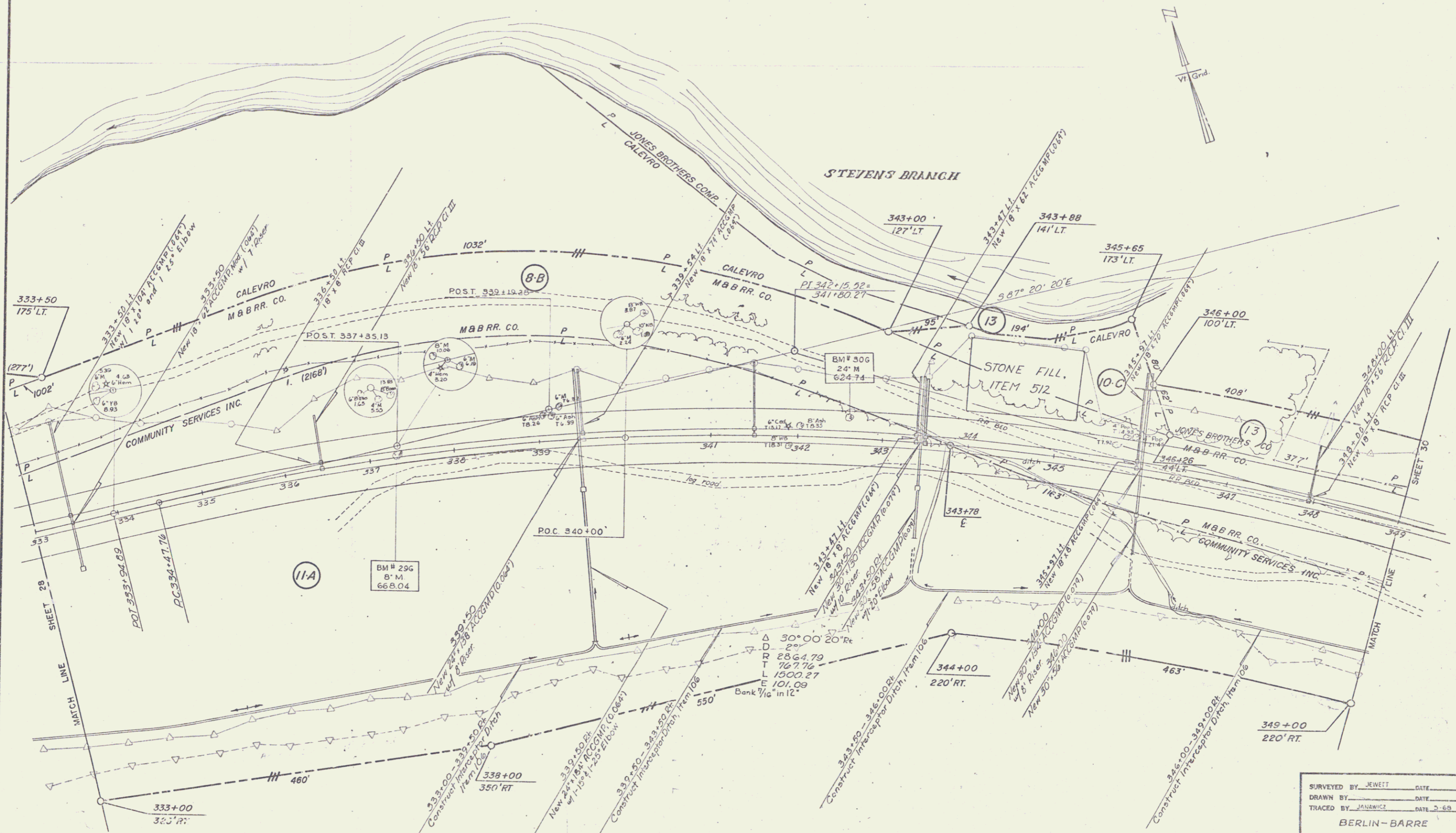
STONE FILL FOR SLOPE PROTECTION,
LIGHT TYPE, ITEM 512
344+00 - 345+25.1L

SUB-BASE OF SAND, ITEM 202
333+00 - 349+00

GRANITE SLOPE EDGING ITEM 556-A
333+00 - 349+00 L&R

STANDARD STEEL BEAM GUARD RAIL
1/4" STEEL POSTS (6' 3" SPACING), ITEM 545A
342+01 - 346+14.1L

CHANNEL EXCAVATION, ITEM 108
344+00 - 345+25.1L



SURVEYED BY JEWETT DATE _____
 DRAWN BY _____ DATE _____
 TRACED BY JANAKWICZ DATE 2-68
 BERLIN-BARRE
 PROJ. F. NO. 026-1(7) 4
 SHEET 29 OF 63