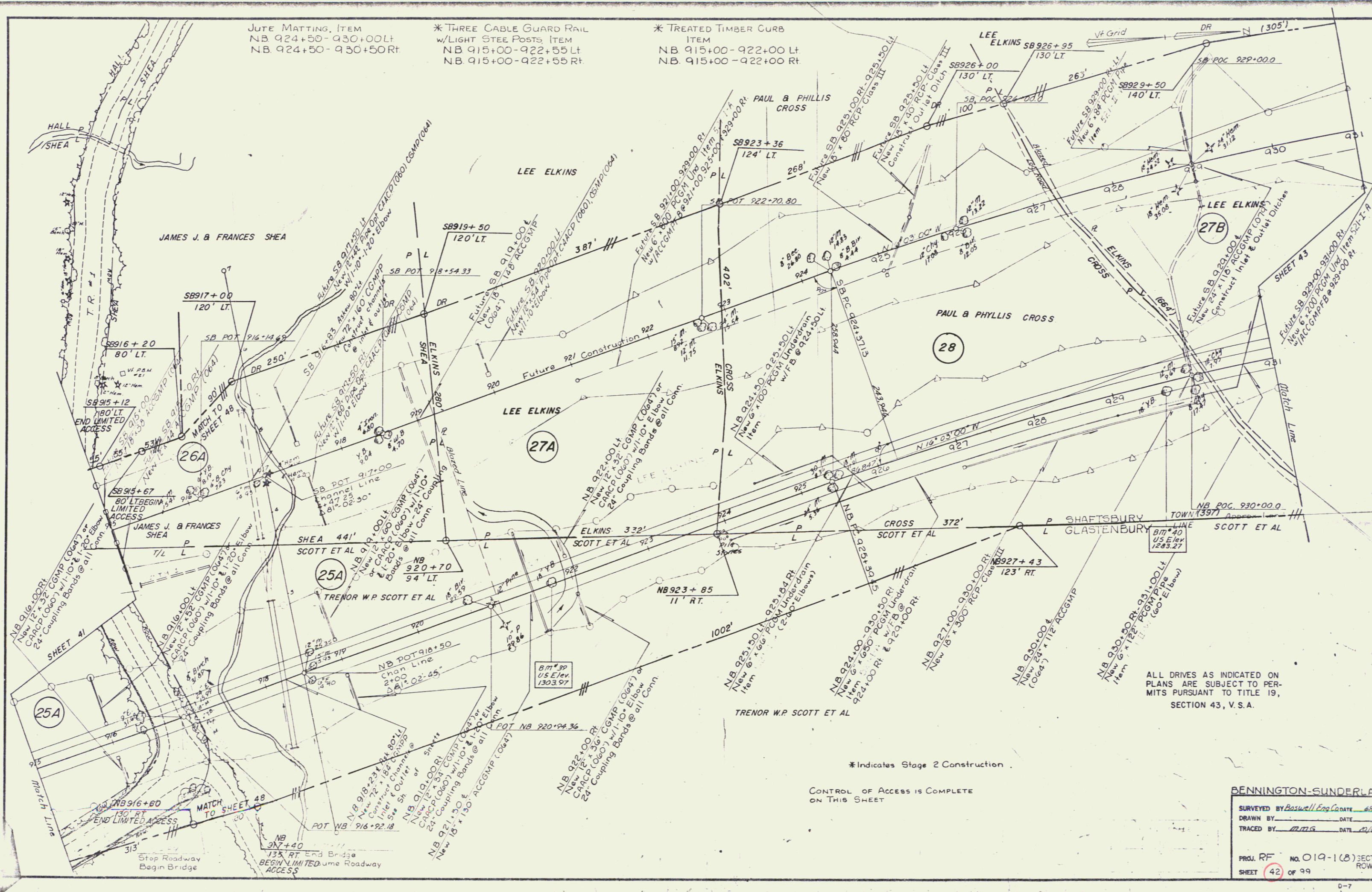


JUTE MATTING, ITEM  
 NB 924+50-930+00LT  
 NB 924+50-930+50RT

\* THREE CABLE GUARD RAIL  
 w/LIGHT STEE POSTS ITEM  
 NB 915+00-922+55LT  
 NB 915+00-922+55RT

\* TREATED TIMBER CURB  
 ITEM  
 NB 915+00-922+00LT  
 NB 915+00-922+00RT



ALL DRIVES AS INDICATED ON  
 PLANS ARE SUBJECT TO PER-  
 MITS PURSUANT TO TITLE 19,  
 SECTION 43, V.S.A.

\* Indicates Stage 2 Construction.

CONTROL OF ACCESS IS COMPLETE  
 ON THIS SHEET

**BENNINGTON-SUNDERLAND**

SURVEYED BY Boswell Eng Co date 68  
 DRAWN BY \_\_\_\_\_ DATE \_\_\_\_\_  
 TRACED BY mmg DATE 8/1/68

PROJ. RF NO. 019-108 SECT. ROW  
 SHEET 42 OF 99