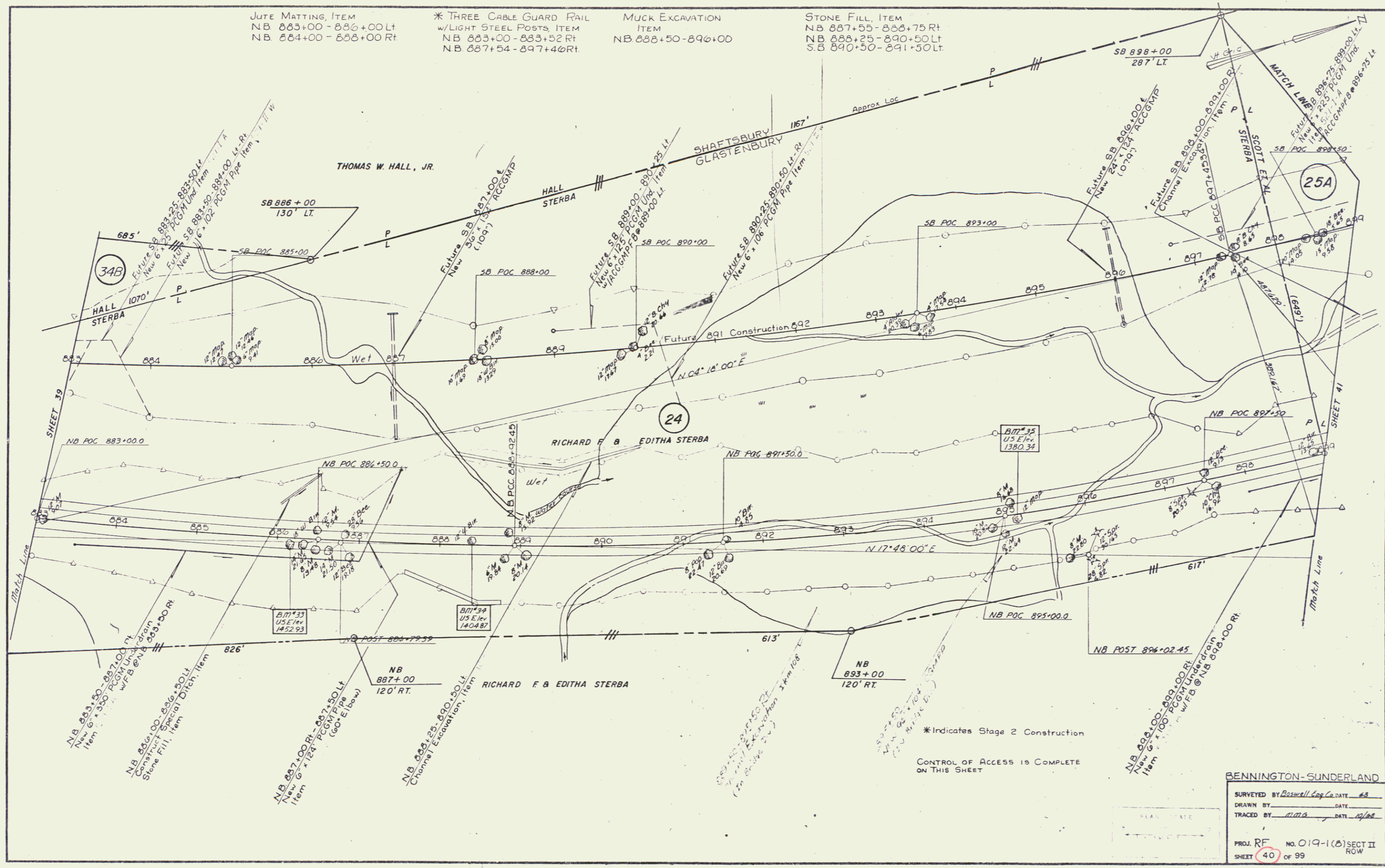


JUTE MATTING, ITEM  
 NB 883+00 - 886+00 Lt  
 NB 884+00 - 886+00 Rt

\* THREE CABLE GUARD RAIL  
 w/LIGHT STEEL POSTS, ITEM  
 NB 883+00 - 883+52 Rt  
 NB 887+54 - 897+46 Rt

MUCK EXCAVATION  
 ITEM  
 NB 888+50 - 890+00

STONE FILL, ITEM  
 NB 887+55 - 888+75 Rt  
 NB 888+25 - 890+50 Lt  
 S.B. 890+50 - 891+50 Lt



\* Indicates Stage 2 Construction

CONTROL OF ACCESS IS COMPLETE  
 ON THIS SHEET

**BENNINGTON-SUNDERLAND**

SURVEYED BY Boswell Eng Co. DATE 68  
 DRAWN BY \_\_\_\_\_ DATE \_\_\_\_\_  
 TRACED BY mmg DATE 12/68

PROJ. RF No. 019-1(8) SECT II  
 SHEET 40 OF 99 ROW

D-7