

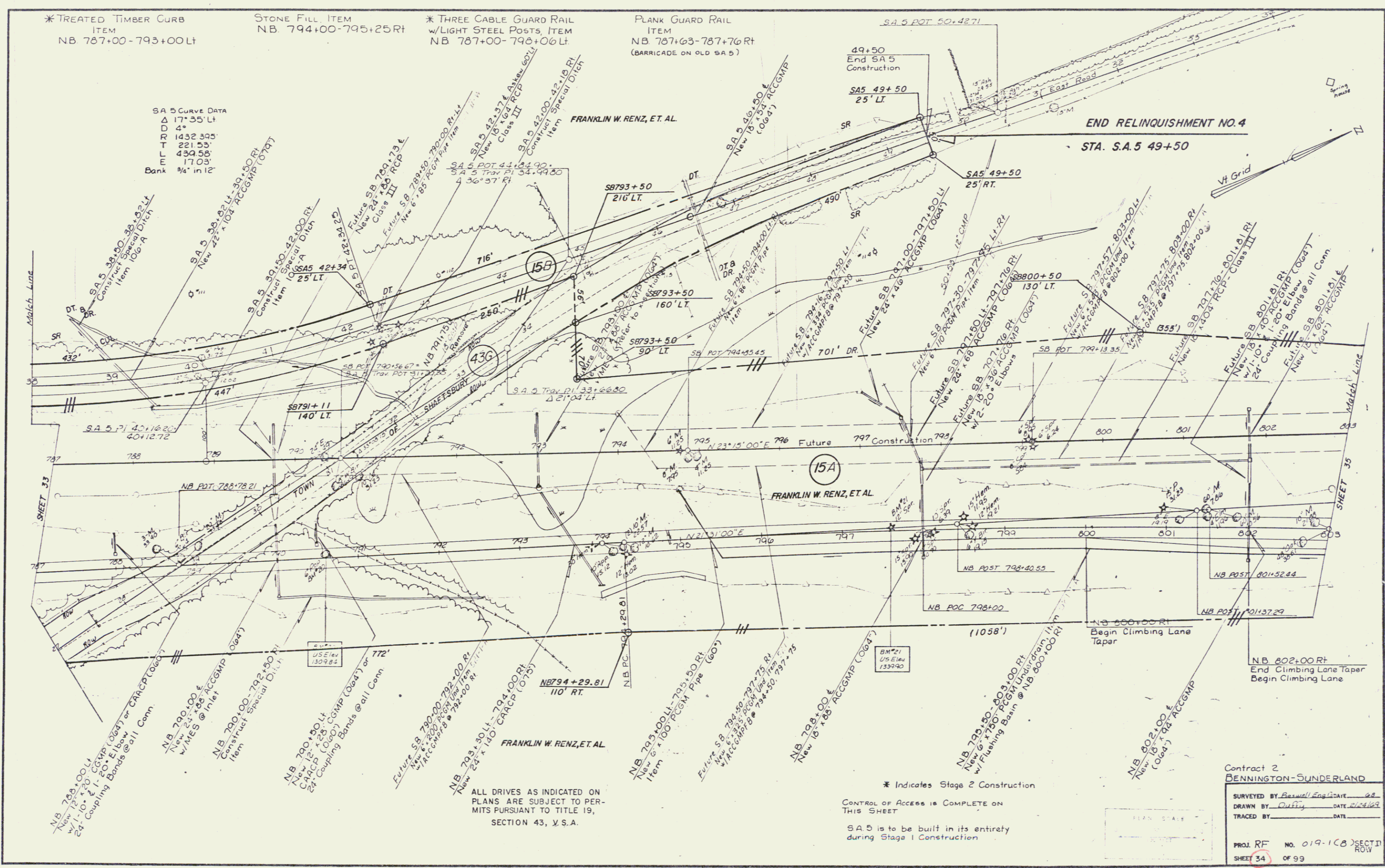
* TREATED TIMBER CURB
ITEM
NB 787+00-793+00 LT

STONE FILL ITEM
NB 794+00-795+25 RT

* THREE CABLE GUARD RAIL
w/LIGHT STEEL POSTS, ITEM
NB 787+00-798+00 LT

PLANK GUARD RAIL
ITEM
NB 787+63-787+76 RT
(BARRICADE ON OLD SA 5)

SA 5 CURVE DATA
D 171.55 LT
R 1432.305
T 221.53
L 439.58
E 17.03
Bank 3/4" in 12'



ALL DRIVES AS INDICATED ON
PLANS ARE SUBJECT TO PER-
MITS PURSUANT TO TITLE 19,
SECTION 43, V.S.A.

* Indicates Stage 2 Construction
CONTROL OF ACCESS IS COMPLETE ON
THIS SHEET
SA 5 IS TO BE BUILT IN ITS ENTIRETY
DURING STAGE 1 CONSTRUCTION

Contract 2
BENNINGTON-SUNDERLAND

SURVEYED BY *Barwell Engineering* DATE *02*
DRAWN BY *Duffy* DATE *2/24/09*
TRACED BY _____ DATE _____

PROJ. RF NO. 019-108 SECTION
SHEET 34 OF 99 ROW