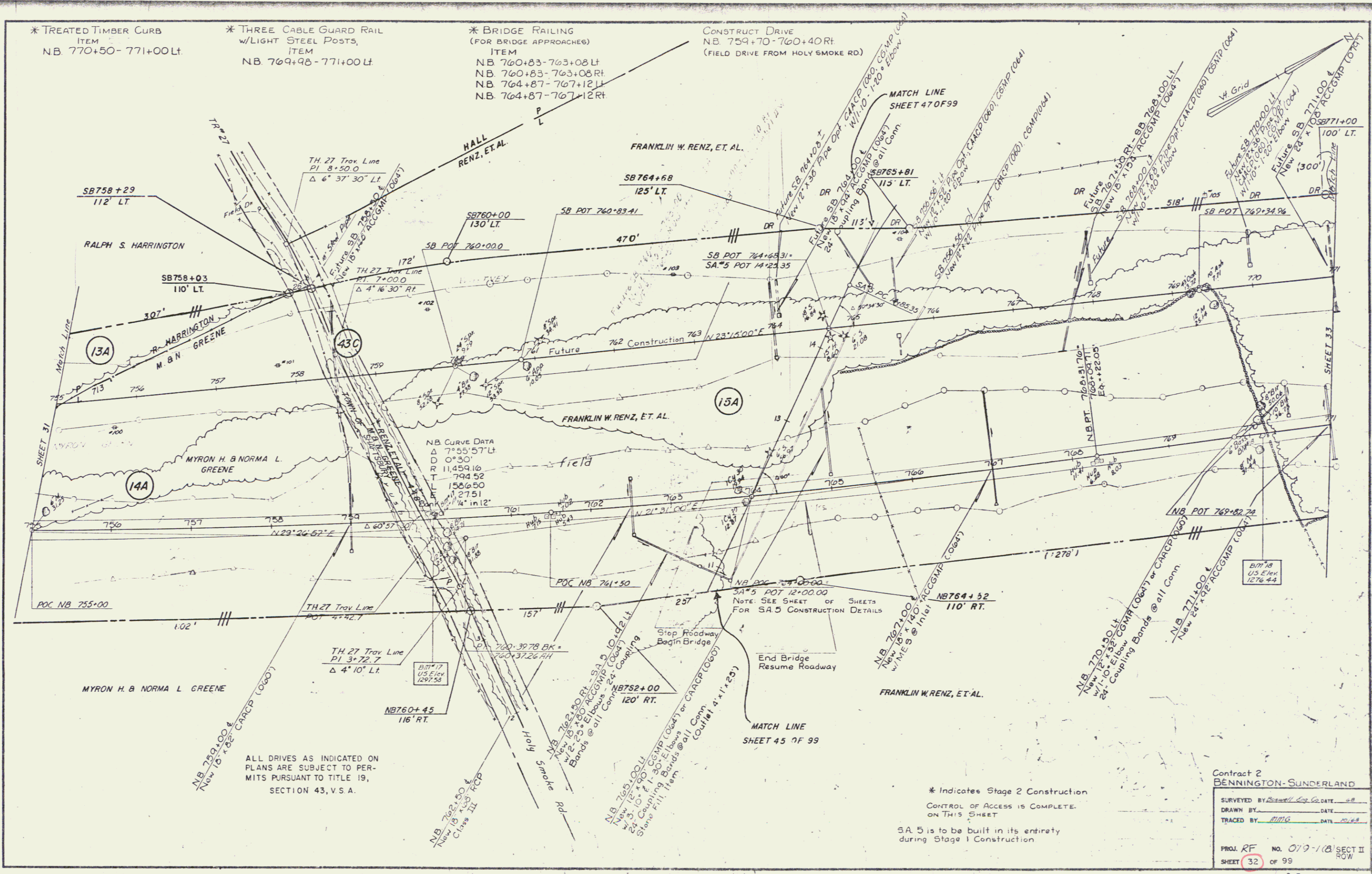


* TREATED TIMBER CURB
ITEM
NB. 770+50-771+00 LT.

* THREE CABLE GUARD RAIL
w/LIGHT STEEL POSTS,
ITEM
NB. 769+98-771+00 LT.

* BRIDGE RAILING
(FOR BRIDGE APPROACHES)
ITEM
NB. 760+83-763+08 LT.
NB. 760+83-763+08 RT.
NB. 764+87-767+12 LT.
NB. 764+87-767+12 RT.

CONSTRUCT DRIVE
NB. 759+70-760+40 RT.
(FIELD DRIVE FROM HOLY SMOKE RD)



ALL DRIVES AS INDICATED ON PLANS ARE SUBJECT TO PERMITS PURSUANT TO TITLE 19, SECTION 43, V.S.A.

* Indicates Stage 2 Construction
CONTROL OF ACCESS IS COMPLETE ON THIS SHEET
SA. 5 is to be built in its entirety during Stage 1 Construction

Contract 2
BENNINGTON-SUNDERLAND

| | |
|-------------|------|
| SURVEYED BY | DATE |
| DRAWN BY | DATE |
| TRACED BY | DATE |

PROJ. RF NO. 079-118 SECT II
SHEET 32 OF 99 ROW

D-7