

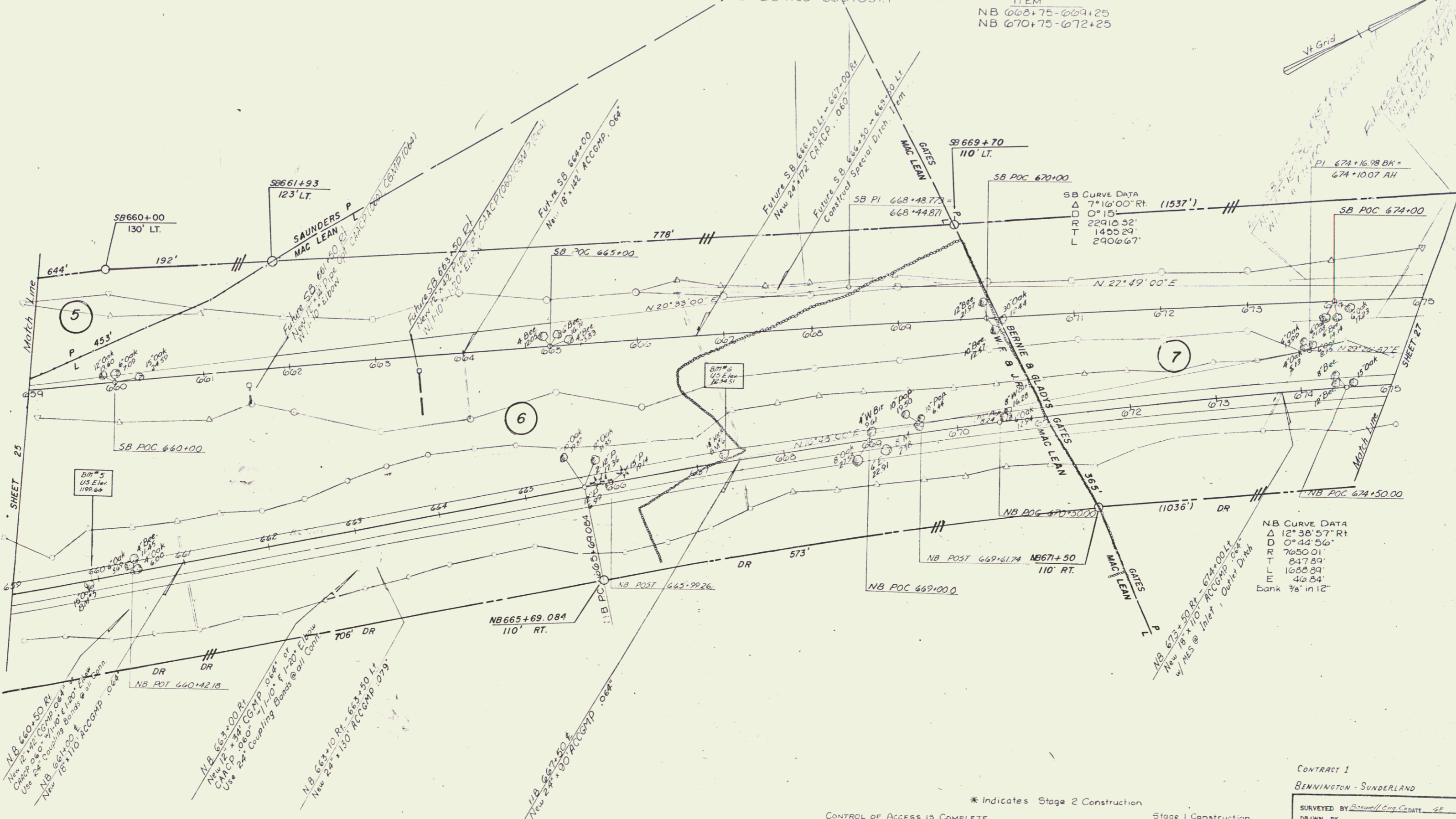
* TREATED TIMBER CURB
ITEM
NB 659+00-665+50 RT.

STONE FILL
ITEM
NB 663+50-665+50 Lt.

UTE MATTING
ITEM
NB 659+00-661+00 Lt.

* THREE CABLE GUARD RAIL
w/ LIGHT STEEL POSTS, ITEM
NB 659+00-669+03 RT.

DRILLING & BLASTING OF
SOLID ROCK SUBGRADE
ITEM
NB 668+75-669+25
NB 670+75-672+25



CONTRACT 1
BENNINGTON - SUNDERLAND

SURVEYED BY	Rescoe/Eng. Co. DATE 68
DRAWN BY	DATE
TRACED BY	DATE 9/82

PROJ. 97 NO. 019-1 (8) SECT. II
SHEET 26 OF 99 ROW