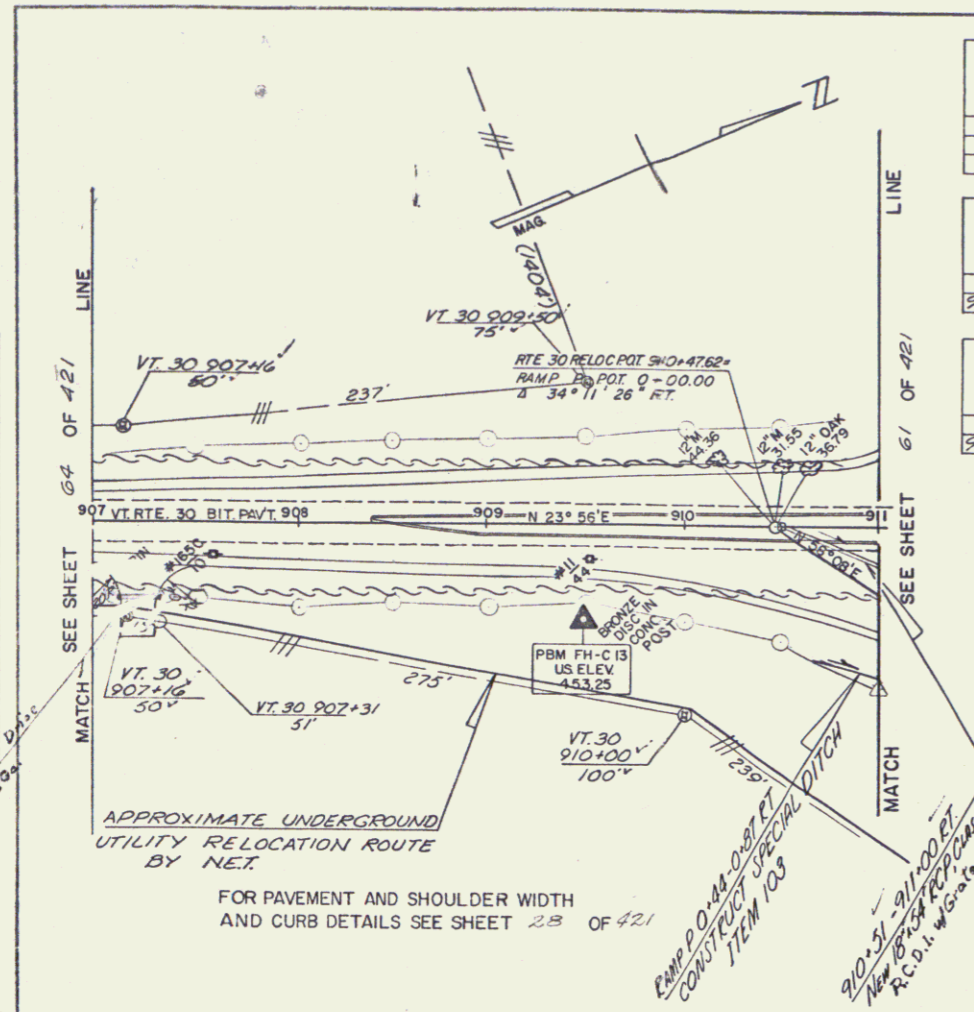


PLAN
 DATE: _____
 DRAWN BY: _____
 CHECKED BY: _____
 IN CHARGE: _____
 SCALE: AS SHOWN
 DATE: NOV. 1988



STATION	STATION	POS.
907+00	911+00	RT
907+00	909+50	RT

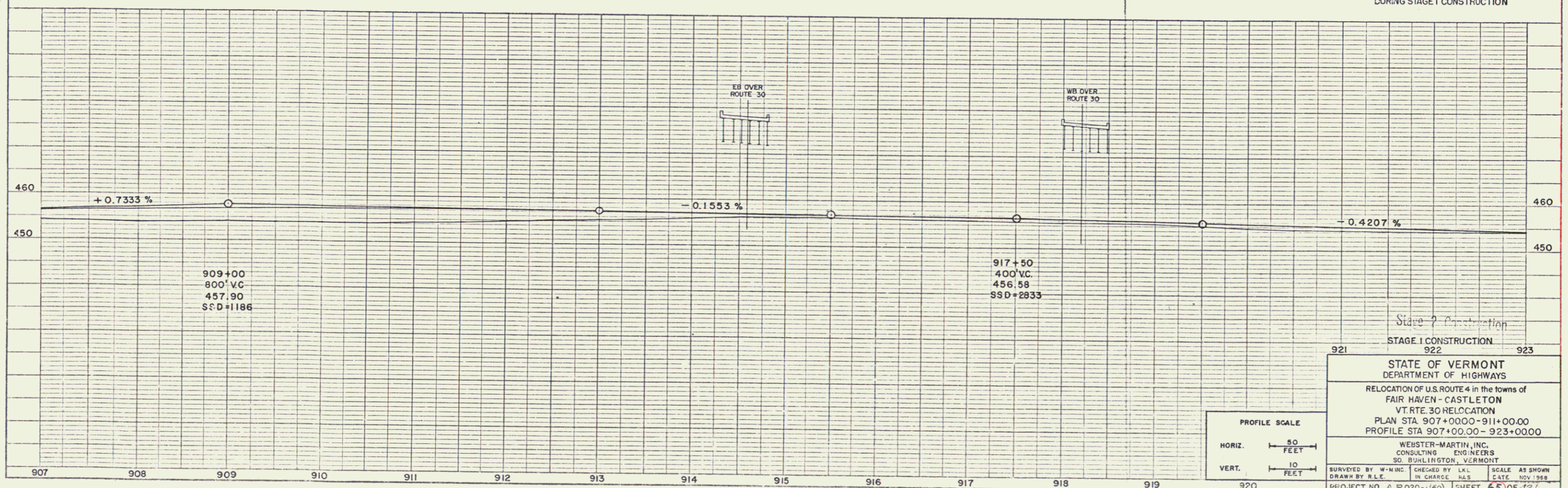
STATION	STATION	POS.
908+39.22	911+00	-

STATION	STATION	POS.
907+23		RT

STATION	STATION	POS.
909+10.6	910+68.8	RT

STATION	STATION	POS.
907+00	911+00	-

STATION	STATION	RAMP
907+39.22	0+00	P



Stage 1 Construction
 STAGE 1 CONSTRUCTION
 921 922 923

STATE OF VERMONT
 DEPARTMENT OF HIGHWAYS

RELOCATION OF U.S. ROUTE 4 in the towns of
 FAIR HAVEN - CASTLETON
 VT. RTE. 30 RELOCATION
 PLAN STA. 907+00.00 - 911+00.00
 PROFILE STA. 907+00.00 - 923+00.00

WEBSTER-MARTIN, INC.
 CONSULTING ENGINEERS
 50 BURLINGTON, VERMONT

SURVEYED BY: W-M-INC. CHECKED BY: LKL SCALE: AS SHOWN
 DRAWN BY: RLE IN CHARGE: HSS DATE: NOV. 1988
 PROJECT NO. A P 020-1(90) SHEET 65 OF 121

of Sheets
 40