

TREATED TIMBER CURB ITEM 556		
STATION	STATION	POS
813+25	814+25	LI
813+25	814+25	LI

TOP SOIL ITEM 621		
STATION	STATION	POS
811+70	813+25	LI

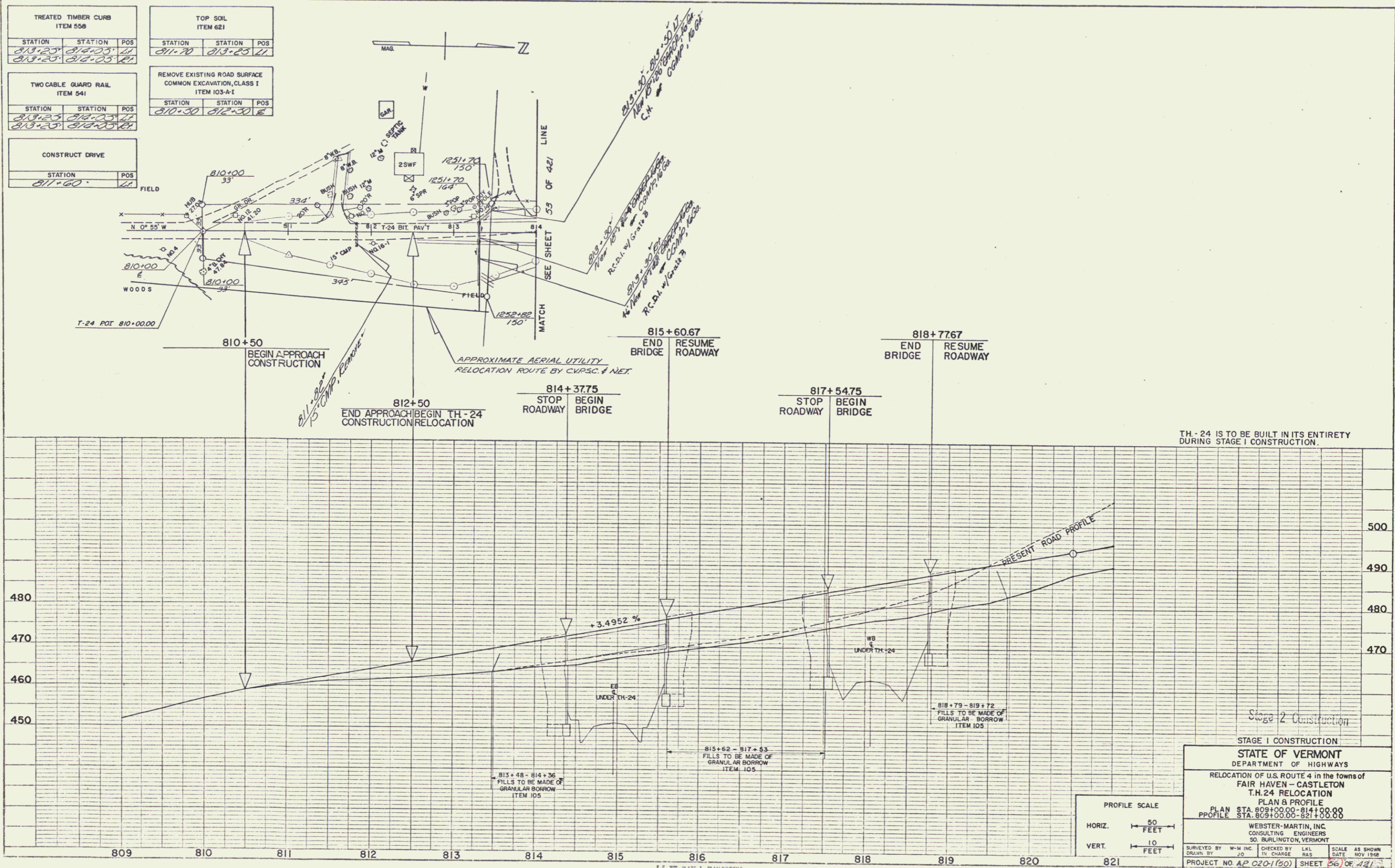
TWO CABLE GUARD RAIL ITEM 541		
STATION	STATION	POS
810+25	814+25	LI
813+25	814+25	LI

REMOVE EXISTING ROAD SURFACE COMMON EXCAVATION, CLASS I ITEM 103-A-1		
STATION	STATION	POS
810+30	812+30	E

CONSTRUCT DRIVE	
STATION	POS
811+60	LI

PLAN
REVISIONS
DATE
BY
CHECKED
BY
DATE
NO. 1

PROFILE
DATE
BY
CHECKED
BY
DATE
NO. 1



TH - 24 IS TO BE BUILT IN ITS ENTIRETY DURING STAGE I CONSTRUCTION.

STAGE 1 CONSTRUCTION
STATE OF VERMONT
 DEPARTMENT OF HIGHWAYS
 RELOCATION OF U.S. ROUTE 4 in the towns of
 FAIR HAVEN - CASTLETON
 T.H. 24 RELOCATION
 PLAN & PROFILE
 PLAN STA. 809+00.00 - 814+00.00
 PROFILE STA. 809+00.00 - 821+00.00
 WESTER-MARTIN, INC.
 CONSULTING ENGINEERS
 50 BURLINGTON, VERMONT
 SURVEYED BY W-M INC. CHECKED BY LKL SCALE AS SHOWN
 DRAWN BY J-D IN CHANGE FILE DATE NOV 1968
 PROJECT NO. AP 0201(80) SHEET 56 OF 49

PLATE 1, PLAN PROFILE
 SUPPL. & PRINT. CO.