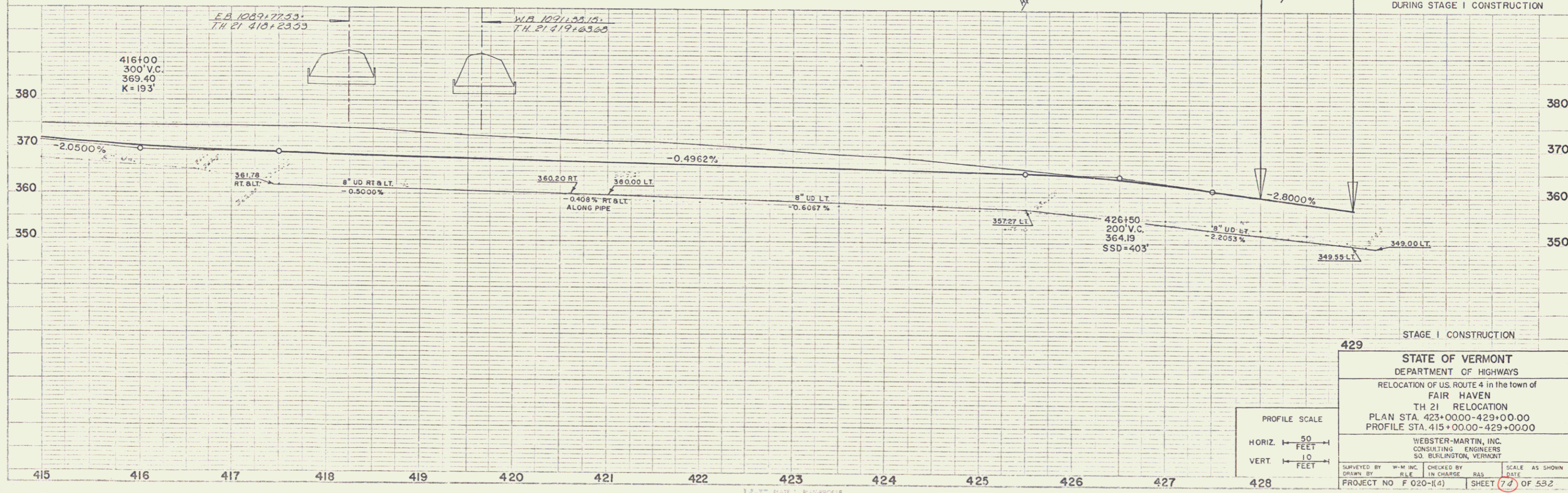
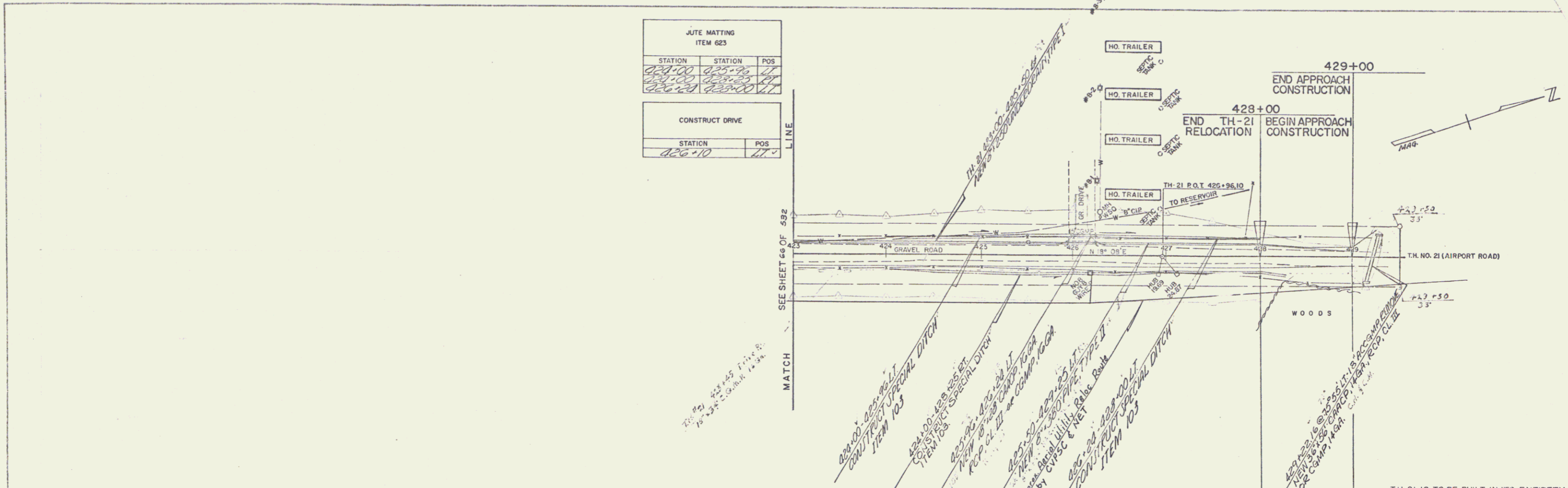


JUTE MATTING ITEM 623		
STATION	STATION	POS
428+00	428+75	LT
428+00	428+75	RT
428+75	429+00	LT
428+75	429+00	RT

CONSTRUCT DRIVE	
STATION	POS
428+10	LT



429 STAGE I CONSTRUCTION

STATE OF VERMONT
DEPARTMENT OF HIGHWAYS
RELOCATION OF U.S. ROUTE 4 in the town of FAIR HAVEN
TH 21 RELOCATION
PLAN STA. 423+00.00-429+00.00
PROFILE STA. 415+00.00-429+00.00

WEBSTER-MARTIN, INC.
CONSULTING ENGINEERS
50 BURLINGTON, VERMONT

SURVEYED BY: W.M. INC. CHECKED BY: RAS. SCALE AS SHOWN
DRAWN BY: R.L.E. IN CHARGE: RAS. DATE: 11/11/10
PROJECT NO. F 020-(14) SHEET 7 OF 53.2

PLAN
SCALE: 1" = 40'
DATE: 11/11/10
BY: W.M. INC.

PROFILE
SCALE: 1" = 10'
DATE: 11/11/10
BY: W.M. INC.

PLATE 1: PROFILE
SCALE: 1" = 10'
DATE: 11/11/10
BY: W.M. INC.