

GRANITE SLOPE EDGING ITEM 556-A		
STATION	STATION	POS

STONE FILL FOR SLOPE PROTECTION (LIGHT TYPE) ITEM 512		
STATION	STATION	POS
EB 1020+00	1020+00	LT
EB 1020+00	1020+00	RT
WB 1020+00	1020+00	LT
WB 1020+00	1020+00	RT

THREE CABLE GUARD RAIL * WITH LIGHT STEEL POSTS ITEM 538		
STATION	STATION	POS
EB 1020+00	1020+00	LT
EB 1020+00	1020+00	RT
WB 1020+00	1020+00	LT
WB 1020+00	1020+00	RT

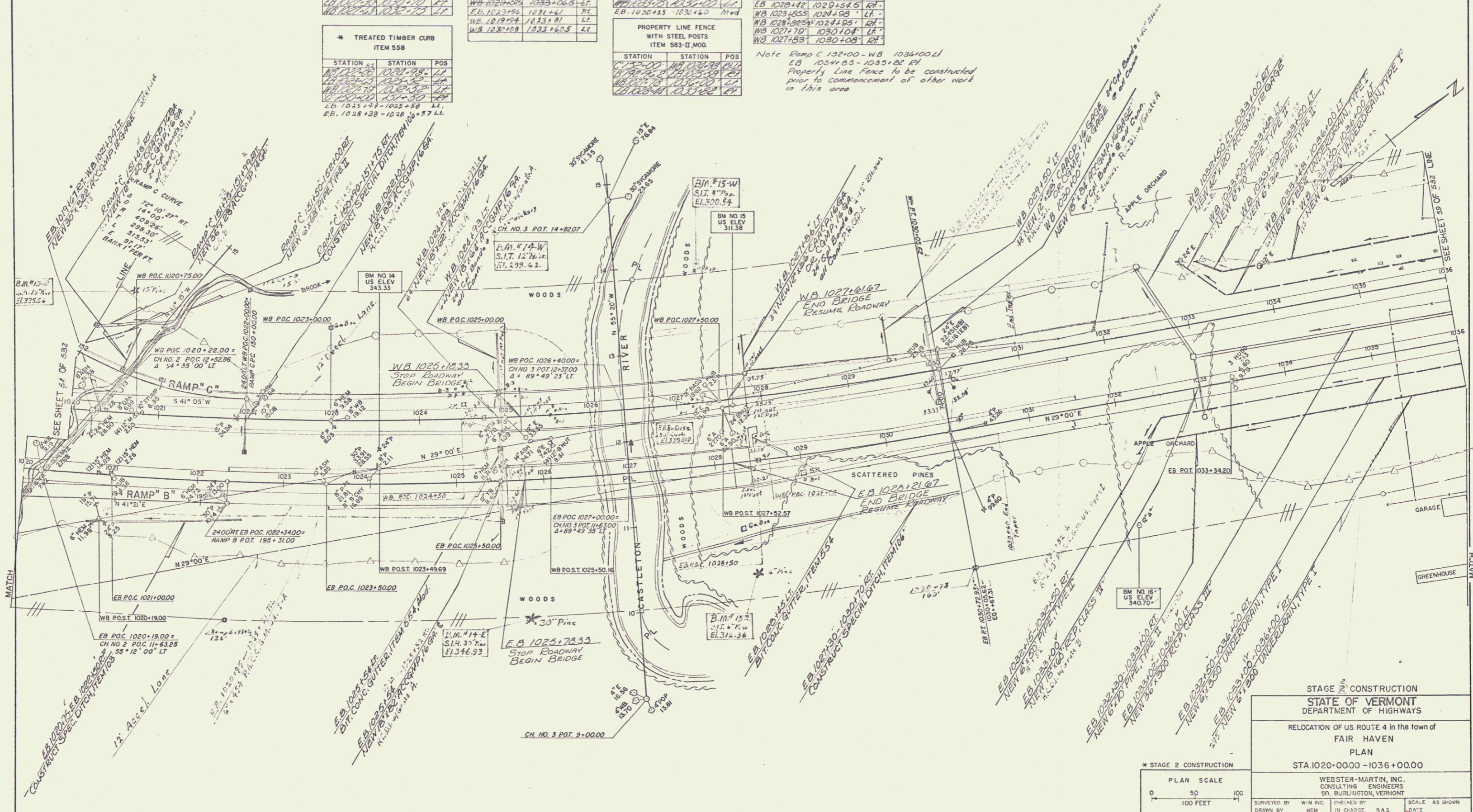
JUTE MATTING ITEM 623		
STATION	STATION	POS
EB 1020+00	1020+00	LT
EB 1020+00	1020+00	RT
WB 1020+00	1020+00	LT
WB 1020+00	1020+00	RT

* BRIDGE RAILING (FOR BRIDGE APPROACHES) ITEM 572		
STA	STA	POS
EB 1023+31	1025+56	RT
EB 1023+35	1025+60	LT
EB 1023+39	1029+64	LT
EB 1023+42	1029+54	RT
WB 1023+55	1024+08	LT
WB 1023+55	1024+08	RT
WB 1024+10	1030+10	LT
WB 1024+10	1030+10	RT

* TREATED TIMBER CURB ITEM 558		
STATION	STATION	POS
EB 1020+00	1020+00	LT
EB 1020+00	1020+00	RT
WB 1020+00	1020+00	LT
WB 1020+00	1020+00	RT

PROPERTY LINE FENCE WITH STEEL POSTS ITEM 583-II, MOD		
STATION	STATION	POS
EB 1020+00	1020+00	LT
EB 1020+00	1020+00	RT
WB 1020+00	1020+00	LT
WB 1020+00	1020+00	RT

Note Ramp C 102100-WB 1036100L1  
EB 1034100-1035100 RT  
Property line fence to be constructed  
prior to commencement of other work  
in this area.



STAGE 2 CONSTRUCTION  
STATE OF VERMONT  
DEPARTMENT OF HIGHWAYS  
RELOCATION OF U.S. ROUTE 4 in the town of  
FAIR HAVEN  
PLAN  
STA 1020+0000 - 1036+0000

WEBSTER-MARTIN, INC.  
CONSULTING ENGINEERS  
50 BURLINGTON, VERMONT

SURVEYED BY: W.M. INC. CHECKED BY: H.C.M. IN CHARGE: R.A.S. DATE: AS SHOWN  
DRAWN BY: H.C.M. IN CHARGE: R.A.S. DATE: 6/27/53  
PROJECT NO. F 020-K(1)(A) SHEET 67 OF 233

