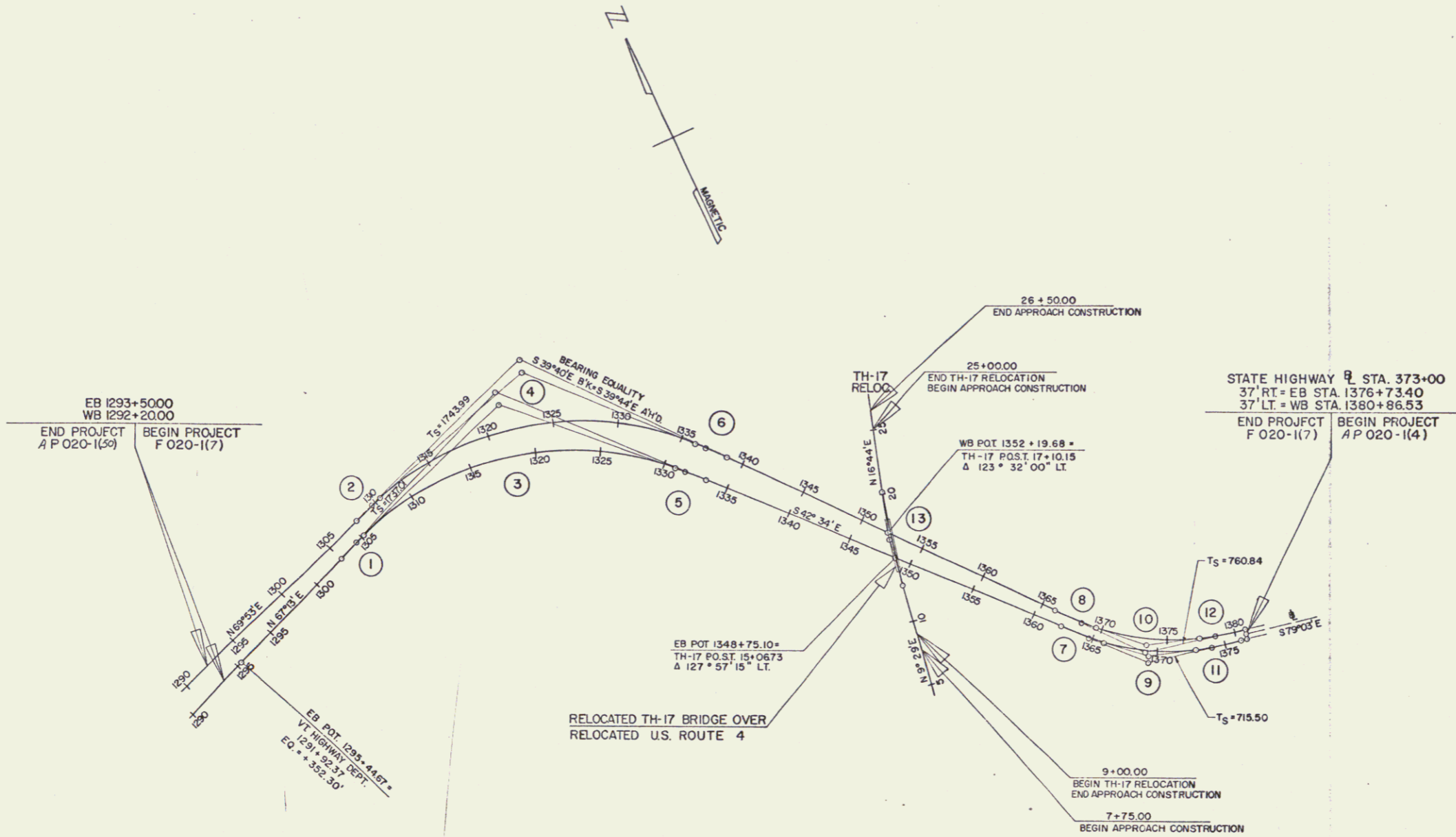


SPIRAL CURVE ① EB $\theta_s$ 3° 07' 30" RT. $D_s$ 2° 30' 00" LT 166.69 ST 83.36 LS 250.00 TS 1302+73.97 SC 1305+23.97 SPI 1304+40.66 1304+40.61	SPIRAL CURVE ② WB $\theta_s$ 3° 07' 30" RT. $D_s$ 2° 30' 00" LT 166.69 ST 83.36 LS 250.00 TS 1308+01.27 SC 1310+51.27 SPI 1309+67.96 1309+67.91	CURVE ③ EB $\Delta$ 63° 58' 00" RT $D$ 2° 30' 00" $R$ 2291.83 $T$ 1431.17 $L$ 2558.67 $E$ 410.15 BANK 7/8" PER FOOT SC 1310+51.27 CS 1330+82.64 PI 1319+55.14 1316+51.47	CURVE ④ WB $\Delta$ 64° 12' 00" RT. $D$ 2° 30' 00" $R$ 2291.83 $T$ 1437.66 $L$ 2568.00 $E$ 413.60 BANK 7/8" PER FOOT SC 1310+51.27 CS 1336+19.27 PI 1324+88.93 1321+81.61	SPIRAL CURVE ⑤ EB $\theta_s$ 3° 07' 30" RT. $D_s$ 2° 30' 00" LT 166.69 ST 83.36 LS 250.00 TS 1330+82.64 SC 1333+32.64 SPI 1331+66.00 1331+65.95	SPIRAL CURVE ⑥ WB $\theta_s$ 3° 07' 30" RT. $D_s$ 2° 30' 00" LT 166.69 ST 83.36 LS 250.00 TS 1336+19.27 SC 1339+69.27 SPI 1337+02.63 1337+02.58	SPIRAL CURVE ⑦ EB $\theta_s$ 6° 07' 30" LT. $D_s$ 3° 30' 00" LT 233.47 ST 116.79 LS 350.00 TS 1366+10.65 SC 1369+60.65 SPI 1368+44.12 1368+43.86	SPIRAL CURVE ⑧ WB $\theta_s$ 6° 07' 30" LT. $D_s$ 3° 30' 00" LT 233.47 ST 116.79 LS 350.00 TS 1362+34.80 SC 1365+84.80 SPI 1364+68.27 1364+68.01	CURVE ⑨ EB $\Delta$ 24° 14' 00" LT. $D$ 3° 30' 00" $R$ 1637.02 $T$ 351.44 $L$ 692.38 $E$ 37.30 BANK 1" PER FOOT SC 1372+77.18 CS 1377+33.98 PI 1369+36.24 1369+25.74	CURVE ⑩ WB $\Delta$ 27° 04' 00" LT. $D$ 3° 30' 00" $R$ 1637.02 $T$ 394.02 $L$ 773.33 $E$ 46.75 BANK 1" PER FOOT SC 1372+77.18 CS 1377+33.98 PI 1373+54.67 1373+52.96	SPIRAL CURVE ⑪ EB $\theta_s$ 6° 07' 30" LT. $D_s$ 3° 30' 00" LT 233.47 ST 116.79 LS 350.00 TS 1372+77.18 SC 1376+27.18 SPI 1373+93.71 1373+93.71	SPIRAL CURVE ⑫ WB $\theta_s$ 6° 07' 30" LT. $D_s$ 3° 30' 00" LT 233.47 ST 116.79 LS 350.00 TS 1377+33.98 SC 1380+83.98 SPI 1378+50.77 1378+50.51	CURVE ⑬ TH-17 $\Delta$ 7° 15' 40" RT. $D$ 1° 00' 00" $R$ 5729.58 $T$ 363.54 $L$ 726.11 $E$ 11.52 BANK 1/4" PER FOOT PC 12+89.81 PT 20+15.92 PI 16+53.35 16+52.38
--	--	---	--	--	--	---	---	---	---	---	---	---



STAGE I CONSTRUCTION  
 STATE OF VERMONT  
 DEPARTMENT OF HIGHWAYS  
 RELOCATION OF U.S. ROUTE 4 in the town of  
 CASTLETON  
 ALIGNMENT DATA SHEET

PLAN SCALE  
 0 500 1000  
 1000 FEET

WEBSTER-MARTIN INC.  
 CONSULTING ENGINEERS  
 50, BURLINGTON, VERMONT

DESIGNED BY W.H. INC. CHECKED BY L.K.L. SCALE AS SHOWN  
 DRAWN BY J.D. IN CHARGE P.A.S. DATE JUNE 1968  
 PROJECT NO. F 020-1(7) SHEET 2 OF 206