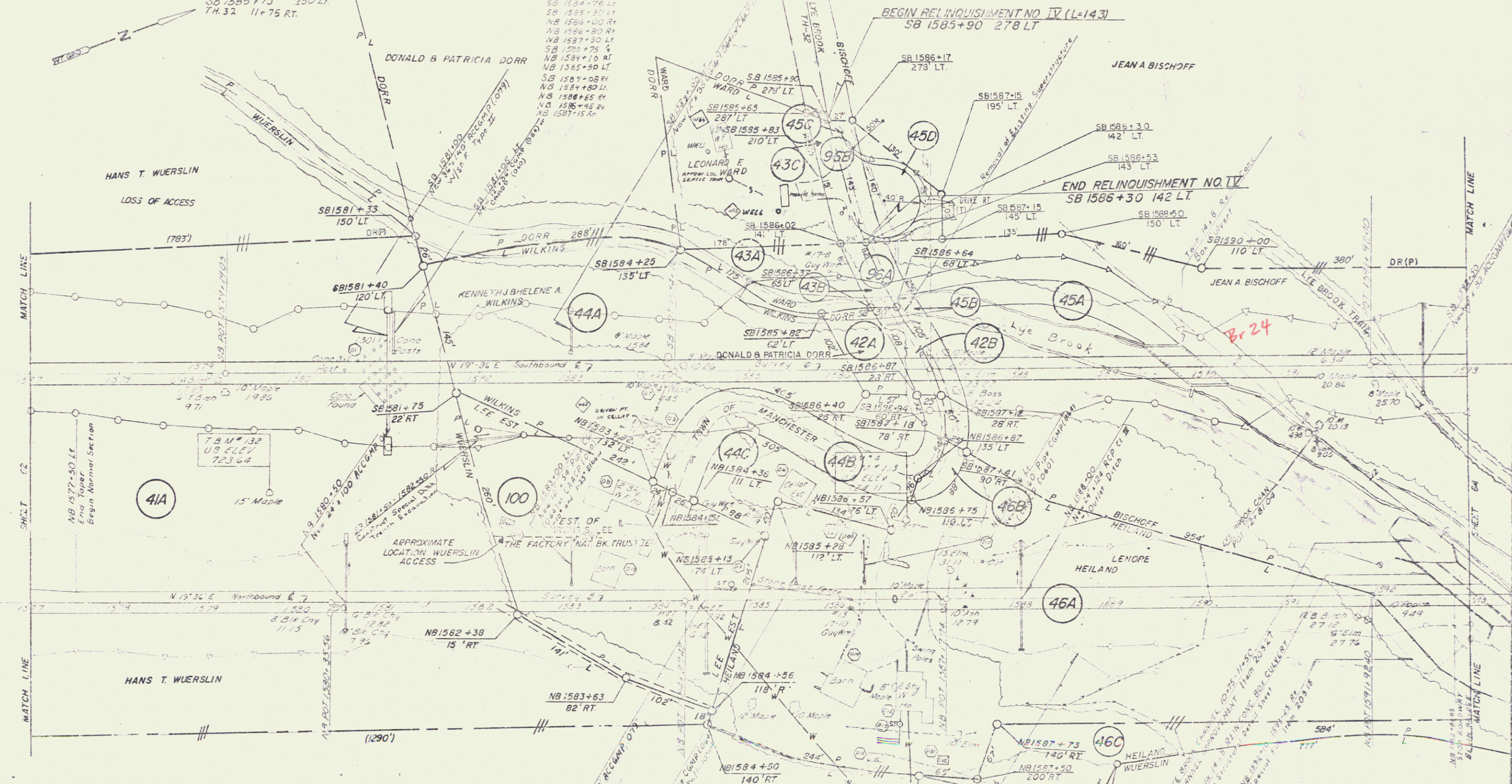


ALL DRIVES AS INDICATED ON PLANS ARE SUBJECT TO PERMITS PURSUANT TO TITLE 19, SECTION 43, VSA

- CONSTRUCT TURNAROUND FOR DEAD END S.R. 1586 +30 LT.
- Plank Guard Rail with Wood Posts Item 621D NB 1586+00 R.
- Demolition & Disposal of Blue Iron 20210 NB 1582+30 LT NB 1583+40 LT SB 1583+50 R NB 1583+75 LT SB 1584+00 R SB 1584+76 LT SB 1585+30 LT NB 1586+00 R NB 1587+30 LT SB 1587+75 L NB 1587+10 R NB 1585+50 LT SB 1587+08 R NB 1587+80 LT NB 1588+65 R NB 1586+45 R NB 1587+15 R
- Stone Fill Type Item 613 LYE BROOK CHANNEL 10+75 - 11+50
- Stone Fill Type Item 613 NB 1580+75 - 1585+90 R.
- Just Milling Item 65410 NB 1577+00 - 1580+48 R
- Treated Timber Curb Item 61635 NB 1578+24 - 1586+26 LT
- Three Cable Guard Rail Light Steel Posts Item 62121 NB 1578+00 - 1586+28 LT NB 1591+10 - 1593+00 LT NB 1592+10 - 1593+00 R



NOTE: DISPOSAL NOS. 1, 3, 4, 8, 12, DELETED

* Stage II Construction	
STATE OF VERMONT	
DEPARTMENT OF HIGHWAYS	
SUNDERLAND MANCHESTER	
MCFARLAND JOHNSON	
DESIGNED BY	DRAWN BY
CHECKED BY	DATE
PROJECT No. 709 1/2	SHEET 63 OF 112
CONTRACT No. 2	