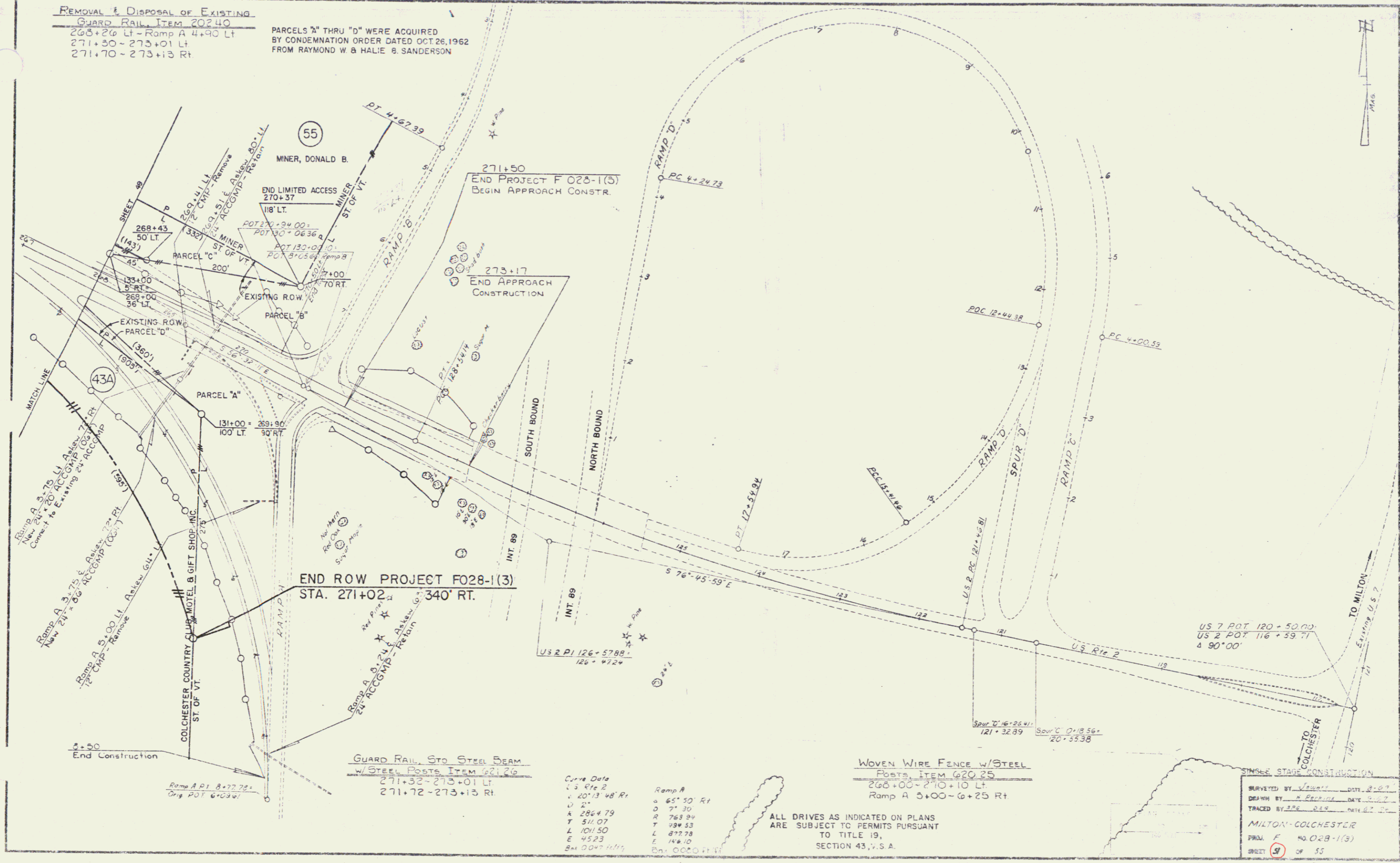


**REMOVAL & DISPOSAL OF EXISTING
GUARD RAIL, ITEM 20240**
 268+26 Lt - Ramp A 4+90 Lt
 271+30 - 273+01 Lt
 271+70 - 273+13 Rt

PARCELS "A" THRU "D" WERE ACQUIRED
 BY CONDEMNATION ORDER DATED OCT. 26, 1962
 FROM RAYMOND W & HALIE B. SANDERSON



Curve Data
 US Rte 2
 2013 48' Rt
 V 21
 A 2864.79
 T 511.07
 L 1011.50
 E 4523
 B.M. 0047 H/11

Ramp A
 65' 50' Rt
 D 7' 30
 R 763.94
 T 939.53
 L 872.78
 E 146.10
 B.M. 0020 H/11

ALL DRIVES AS INDICATED ON PLANS
 ARE SUBJECT TO PERMITS PURSUANT
 TO TITLE 19,
 SECTION 43, V.S.A.

SINGLE STAGE CONSTRUCTION

SURVEYED BY	Venard	DATE	8-2-7
DESIGNED BY	A. Equinox	DATE	8-2-7
TRACED BY	SPB, DCS	DATE	8-2-7
MILTON-COLCHESTER			
PROJ.	F 028-1(3)		
SHEET	9	OF 55	