

Guard Rail, 3 Cows 4 Lt Wood Posts*
 NB 467+00 - 471+98 Rt
 SB 467+00 - 476+12 Lt

Guard Rail, Std Steel Beam Wood Posts, Type II*
 NB 475+12 - 483+02 Rt
 NB 475+25 - 481+02 Lt
 SB 476+00 - 483+12 Rt
 SB 476+28 - 482+75 Lt

Drilling & Blasting of Solid Rock Subgrade

Woven Wire Fence 4 Steel Posts
 NB 467+00 - 476+92 Rt
 SB 467+00 - 476+94 Lt
 NB 477+04 - 483+00 Rt
 SB 477+08 - 483+00 Lt

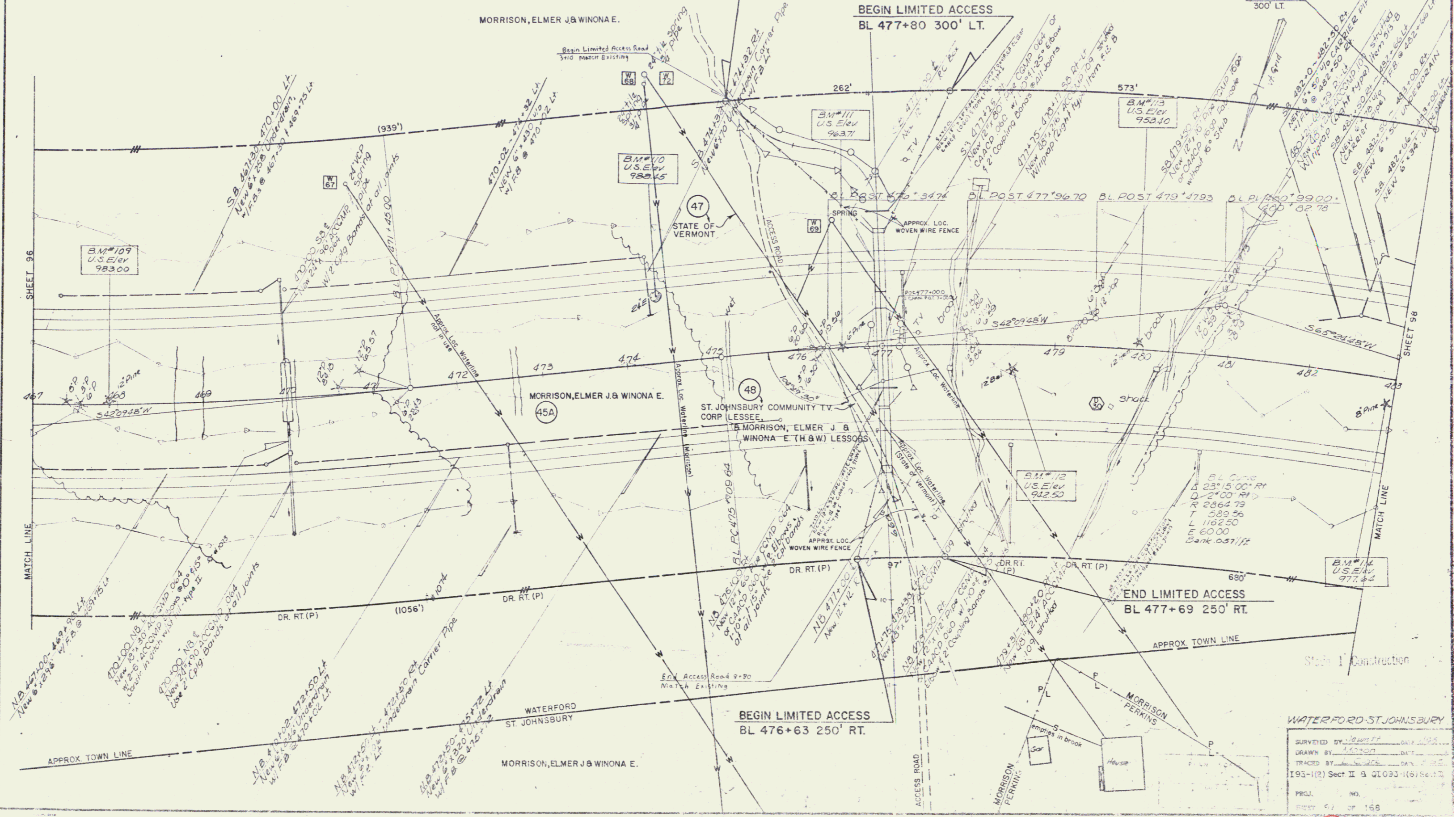
Drive Gate for Woven Wire Fence
 NB 477+00 Rt, SB 477+00 Lt
 Note: Gates to be placed @ entrance to RC Boxes to open inwards for ease of operation during winter months

* Denotes Stage I Construction

END LIMITED ACCESS
 BL 475+42 300' LT.

BEGIN LIMITED ACCESS
 BL 477+80 300' LT.

BL 483+00
 300' LT.



WATERFORD-ST. JOHNSBURY	
SURVEYED BY	...
DRAWN BY	...
TRACED BY	...
193-1(2) Sect II & Q1033-1(6) 56.12	
PROJ. NO.	...
SHEET 97 OF 168	...

97

92