

STONE FILL TYPE III
STA 50+00 LT - 51+00 LT

NOTE: FOR BRIDGE PAV. STATIONING
SEE CAT. G.

REV. CURVE #1 DATA
Δ 17°-18'-30"
D 9'
T 96.59'
R 636.62
L 192.31
E 7.33
Bank 0.04' MEET

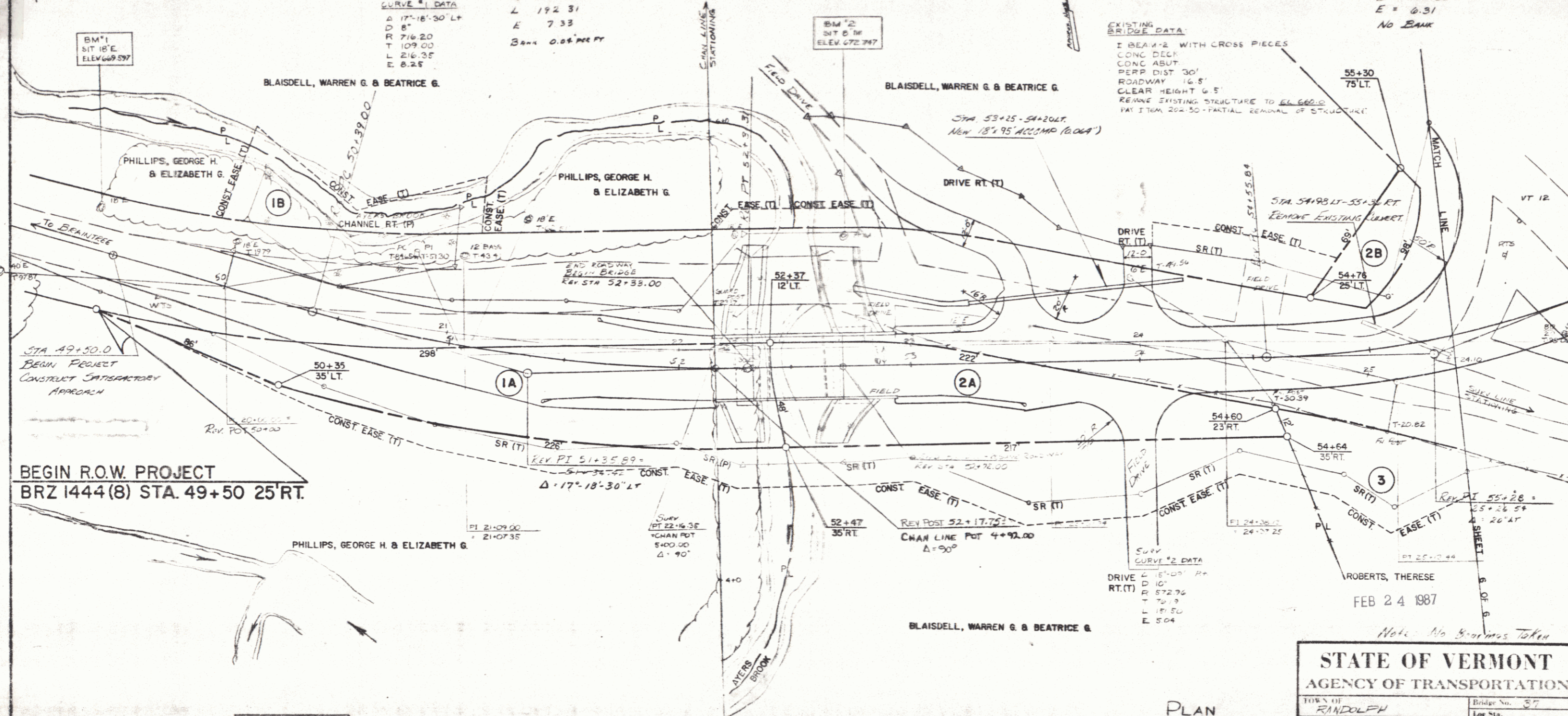
SURV. CURVE #1 DATA
Δ 17°-18'-30" LT
D 8'
R 716.20
T 109.00
L 216.35
E 8.25

CONSTRUCT FIELD DRIVE
REV. STA 53+48 LT
REV. STA 54+00 LT
REV. STA 54+00 RT
CONSTRUCT DRIVES w/ 1 on 1 1/2 SLOPES
WIDTHS AS NOTED.

REV. CURVE #2 DATA
Δ = 20° LT
D = 14'
T = 72.16
R = 409.26
L = 142.86
E = 6.31
NO BANK

EXISTING BRIDGE DATA

I BEAM #2 WITH CROSS PIECES
CONC DECK
CONC ABUT
PERP DIST 30'
ROADWAY 16.5'
CLEAR HEIGHT 6.5'
REMOVE EXISTING STRUCTURE TO EL. 666.0
PAV. FROM 202.50 - PARTIAL REMOVAL OF STRUCTURE



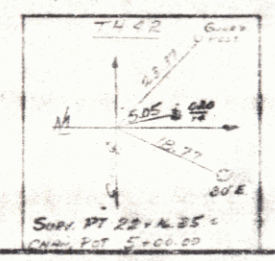
BEGIN R.O.W. PROJECT
BRZ 1444 (8) STA. 49+50 25' RT.

FEB 24 1987

Note: No Bearings Taken

STATE OF VERMONT AGENCY OF TRANSPORTATION	
TOWN OF RANDOLPH	Bridge No. 57
HIGHWAY NO. TH 40	Log Sta.
PLAN	
THRU BRZ OVER AYERS BROOK	
Designed by P. J. GARDNER	Drawn by D. E. HERITT
Checked by	Bridge Design Specialist
PROJECT RANDOLPH	PROJECT NO. BRZ 1444 (8)
Bridge Sheet No.	Sheet 5 of 6

PLAN
SCALE 1" = 20' HORIZONTAL
1" = 10' VERTICAL



5