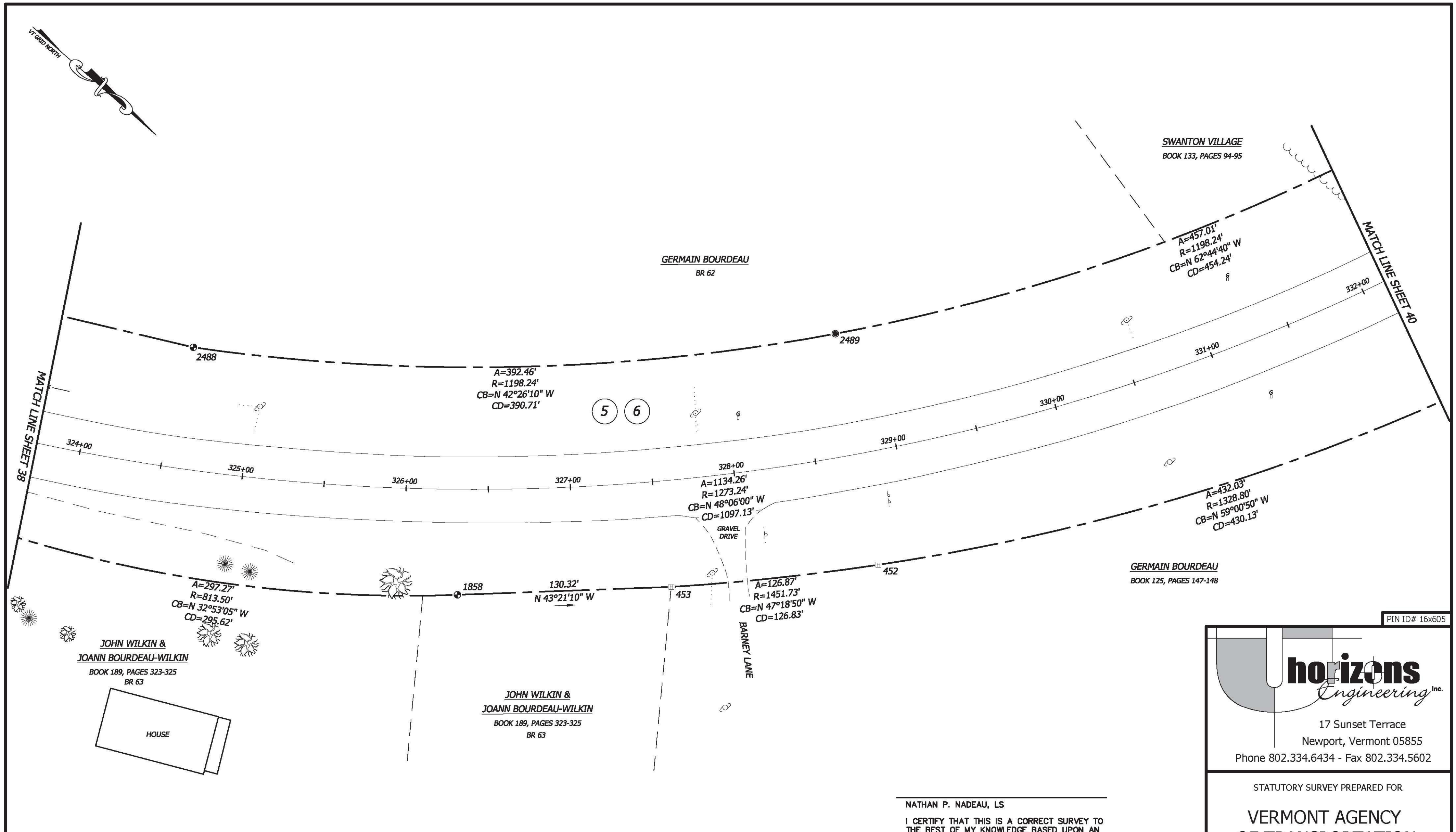


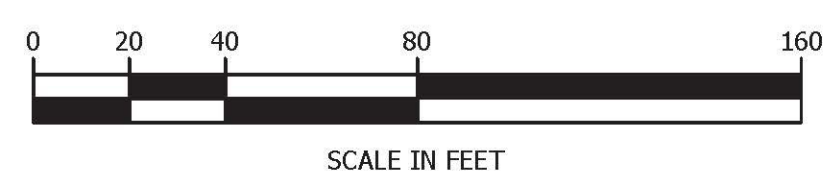
HORIZONS ENGINEERING INC. CERTIFIES THAT THIS DRAWING WAS PRODUCED AS AN ORIGINAL INK ON MYLAR

SIGNATURE



MONUMENT DETAIL TABLE			
MON. NO.	COORDINATE	STATION	DESCRIPTION
2488	N 878281.84 E 1484748.73	324+59.30 74.10' LEFT	FENO TYPE MONUMENT SET 0.4' ABOVE GRADE
1858	N 878501.90 E 1484756.12	326+31.65 64.23' RIGHT	FENO TYPE MONUMENT SET 0.9' ABOVE GRADE
453	N 878596.53 E 1484666.61	327+55.74 64.71' RIGHT	4"x4" CONCRETE HIGHWAY MONUMENT FOUND 0.3' ABOVE GRADE SCRIBED "VTHD"
2489	N 878570.20 E 1484485.10	328+76.06 74.40' LEFT	5/8" REBAR SET 0.4' ABOVE GRADE
452	N 878682.51 E 1484573.38	328+76.24 68.59' RIGHT	4"x4" CONCRETE HIGHWAY MONUMENT FOUND 0.3' ABOVE GRADE SCRIBED "VTHD"

NATHAN P. NADEAU, LS
 I CERTIFY THAT THIS IS A CORRECT SURVEY TO THE BEST OF MY KNOWLEDGE BASED UPON AN EDM TOTAL STATION AND GPS FIELD SURVEY AND TOWN OF SAINT ALBANS, TOWN OF SWANTON AND REFERENCED LAND AND HIGHWAY RECORDS. THIS PLAT MEETS THE REQUIREMENTS OF 27 VSA SECTION 1403.



PIN ID# 16x605

horizons
Engineering Inc.

17 Sunset Terrace
Newport, Vermont 05855
Phone 802.334.6434 - Fax 802.334.5602

STATUTORY SURVEY PREPARED FOR
VERMONT AGENCY OF TRANSPORTATION
 1 NATIONAL LIFE DRIVE
 MONTPELIER, VT 05633-5001
 OF U.S. ROUTE 7
 TOWN OF ST. ALBANS, TOWN OF SWANTON
 FRANKLIN COUNTY, VERMONT

	DATE:	PROJECT #:
	1/12/2017	15522
	SURV'D BY:	DRAWN BY:
	JN, AN, JB	JN, NN
CHECK'D BY:	SCALE:	
AN	1"=40'	
SHEET 39 OF 43		

© 2017 horizons Engineering Inc.
 All rights reserved