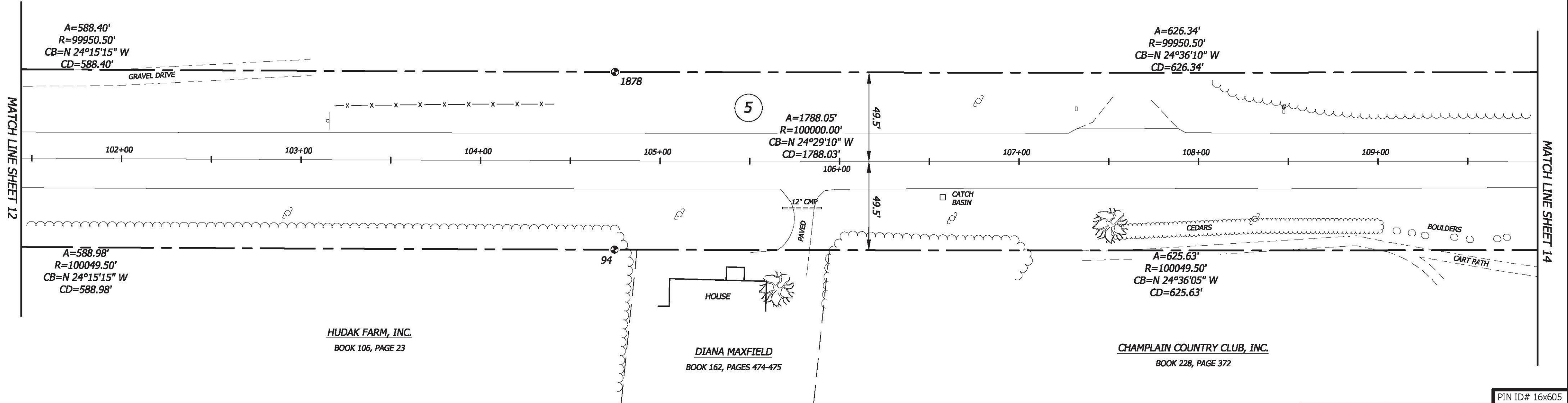


HUDAK FARM, INC.
BOOK 106, PAGE 23



MATCH LINE SHEET 12

MATCH LINE SHEET 14

PIN ID# 16x605

horizons
Engineering Inc.

17 Sunset Terrace
Newport, Vermont 05855
Phone 802.334.6434 - Fax 802.334.5602

STATUTORY SURVEY PREPARED FOR

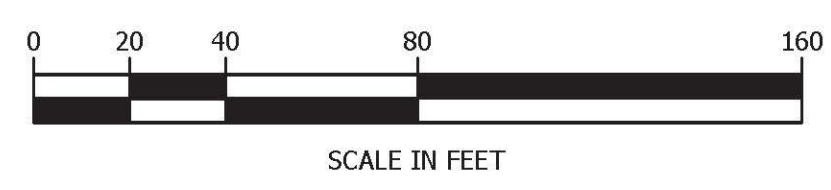
**VERMONT AGENCY
OF TRANSPORTATION**

1 NATIONAL LIFE DRIVE
MONTPELIER, VT 05633-5001

OF U.S. ROUTE 7
TOWN OF ST. ALBANS, TOWN OF SWANTON
FRANKLIN COUNTY, VERMONT

	DATE:	PROJECT #:
	1/12/2017	15522
	SURV'D BY:	DRAWN BY:
	JN, AN, JB	JN, NN
CHECK'D BY:	SCALE:	
AN	1"=40'	
SHEET 13 OF 43		

MONUMENT DETAIL TABLE			
MON. NO.	COORDINATE	STATION	DESCRIPTION
94	N 857832.94 E 1487304.80	104+74.71 49.50' RIGHT	FENO TYPE MONUMENT SET 0.9' ABOVE GRADE
1878	N 857792.01 E 1487214.66	104+74.71 49.50' LEFT	FENO TYPE MONUMENT SET AT GRADE



NATHAN P. NADEAU, LS

I CERTIFY THAT THIS IS A CORRECT SURVEY TO THE BEST OF MY KNOWLEDGE BASED UPON AN EDM TOTAL STATION AND GPS FIELD SURVEY AND TOWN OF SAINT ALBANS, TOWN OF SWANTON AND REFERENCED LAND AND HIGHWAY RECORDS. THIS PLAT MEETS THE REQUIREMENTS OF 27 VSA SECTION 1403.

© 2017
horizons
Engineering
All rights reserved

HORIZONS ENGINEERING INC. CERTIFIES THAT THIS DRAWING WAS PRODUCED AS AN ORIGINAL INK ON MYLAR SIGNATURE