

STEEL BEAM GUARDRAIL, GALVANIZED W/8 FEET POSTS

STA 51+88.02 - 54+40.00, RT  
STA 52+37.99 - 54+40.00, LT

ANCHOR FOR STEEL BEAM RAIL  
52+50.00, LT

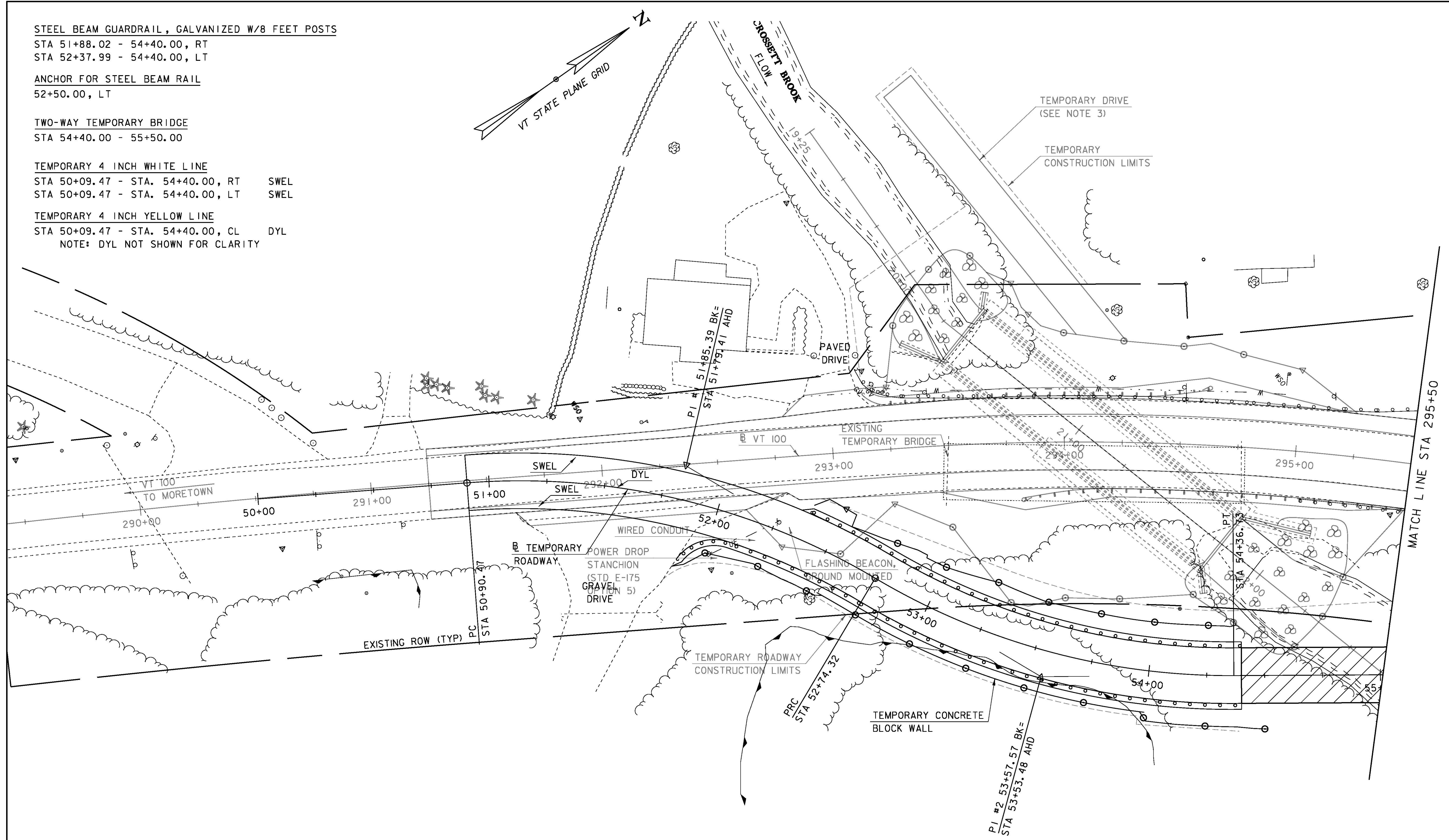
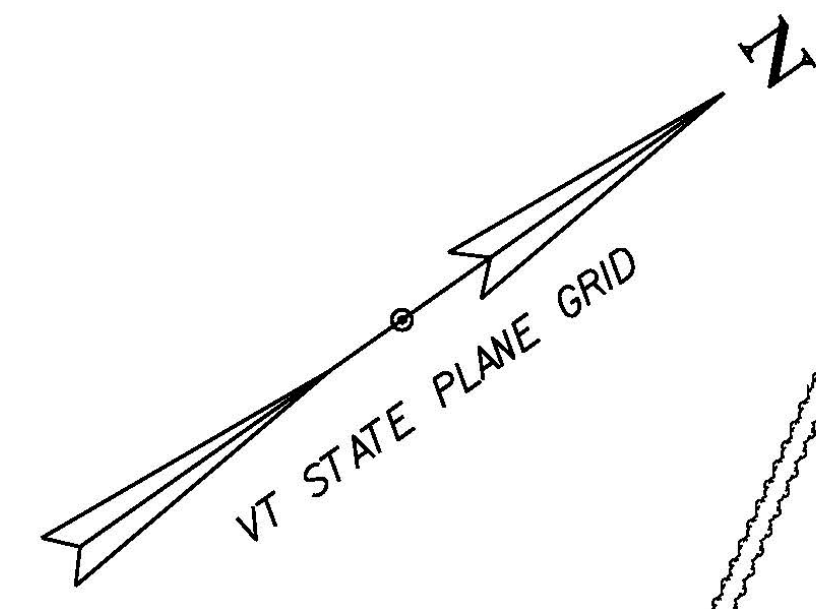
TWO-WAY TEMPORARY BRIDGE  
STA 54+40.00 - 55+50.00

TEMPORARY 4 INCH WHITE LINE

STA 50+09.47 - STA. 54+40.00, RT SWEL  
STA 50+09.47 - STA. 54+40.00, LT SWEL

TEMPORARY 4 INCH YELLOW LINE

STA 50+09.47 - STA. 54+40.00, CL DYL  
NOTE: DYL NOT SHOWN FOR CLARITY



TEMPORARY ROADWAY LAYOUT I

SCALE 1" = 20'-0"  
20 0 20



NOTE: ITEM DESCRIPTIONS AND STATION RANGES PROVIDED ARE TO AID IN THE LAYOUT AND CONSTRUCTION OF THE TEMPORARY ROADWAY. ALL ITEMS ARE INCIDENTAL TO ITEM 528.II, "TWO-WAY TEMPORARY BRIDGE."

PROJECT NAME: DUXBURY  
PROJECT NUMBER: BF 013-4(47)

FILE NAME: r16b001tempplay1.dgn  
PROJECT LEADER: K. HIGGINS  
DESIGNED BY: TYLIN  
TEMPORARY ROADWAY SHEET I

PLOT DATE: 05-MAY-2016  
DRAWN BY: TYLIN  
CHECKED BY: TYLIN  
SHEET 12 OF 19