

- 1. REMOVAL OF STRUCTURE
STA 293+51.47 LT - 294+90.57 RT
- 2. WIRED CONDUIT (1") (SCH 80 PVC)
292+43.20, RT TO 292+74.57, RT
- 3. CONSTRUCT DRIVES **CHAMPNEY, LINDA H.**
291+61.79 RT - 292+78.98, LT
6' PAVED APRON
292+79.23 LT - 293+16.67 LT
8' PAVED APRON
- 4. POWER DROP STANCHION, STREET LIGHTING
292+43.20, RT
- 5. DUCTILE IRON PIPE, CEMENT LINED (8" DIA)
(CLASS 52)
292+60.00 - 294+95.00, LT
- 6. REMOVE MAILBOX, SINGLE SUPPORT
292+75.00, LT
- 7. RELOCATE MAILBOX, SINGLE SUPPORT
292+75.00, LT
- 8. NO VEHICLES ALLOWED SECTION, FLARED
THIS PROPERTY
- 9. MANUFACTURED TERMINAL
STA 294+20.80, RT
STA 294+26.01, LT
- 10. ELECTRICAL LINES TO BE REMOVED, TELEPHONE AND CABLE LINES TO REMAIN
- 11. NO TRIMMING OF THIS ROW OF HEDGES
- 12. BEGIN APPROACH
STA. 291+25.00
MATCH EXISTING
- 13. REMOVE MAILBOX
- 14. REMOVE MAILBOX
- 15. REMOVE MAILBOX
- 16. REMOVE MAILBOX
- 17. REMOVE MAILBOX
- 18. REMOVE MAILBOX
- 19. REMOVE MAILBOX
- 20. REMOVE MAILBOX
- 21. REMOVE MAILBOX
- 22. REMOVE MAILBOX
- 23. REMOVE MAILBOX
- 24. REMOVE MAILBOX
- 25. REMOVE MAILBOX
- 26. REMOVE MAILBOX
- 27. REMOVE MAILBOX
- 28. REMOVE MAILBOX
- 29. REMOVE MAILBOX
- 30. REMOVE MAILBOX
- 31. REMOVE MAILBOX
- 32. REMOVE MAILBOX
- 33. REMOVE MAILBOX
- 34. REMOVE MAILBOX
- 35. REMOVE MAILBOX
- 36. REMOVE MAILBOX
- 37. REMOVE MAILBOX
- 38. REMOVE MAILBOX
- 39. REMOVE MAILBOX
- 40. REMOVE MAILBOX
- 41. REMOVE MAILBOX
- 42. REMOVE MAILBOX
- 43. REMOVE MAILBOX
- 44. REMOVE MAILBOX
- 45. REMOVE MAILBOX
- 46. REMOVE MAILBOX
- 47. REMOVE MAILBOX
- 48. REMOVE MAILBOX
- 49. REMOVE MAILBOX
- 50. REMOVE MAILBOX
- 51. REMOVE MAILBOX
- 52. REMOVE MAILBOX
- 53. REMOVE MAILBOX
- 54. REMOVE MAILBOX
- 55. REMOVE MAILBOX
- 56. REMOVE MAILBOX
- 57. REMOVE MAILBOX
- 58. REMOVE MAILBOX
- 59. REMOVE MAILBOX
- 60. REMOVE MAILBOX
- 61. REMOVE MAILBOX
- 62. REMOVE MAILBOX
- 63. REMOVE MAILBOX
- 64. REMOVE MAILBOX
- 65. REMOVE MAILBOX
- 66. REMOVE MAILBOX
- 67. REMOVE MAILBOX
- 68. REMOVE MAILBOX
- 69. REMOVE MAILBOX
- 70. REMOVE MAILBOX
- 71. REMOVE MAILBOX
- 72. REMOVE MAILBOX
- 73. REMOVE MAILBOX
- 74. REMOVE MAILBOX
- 75. REMOVE MAILBOX
- 76. REMOVE MAILBOX
- 77. REMOVE MAILBOX
- 78. REMOVE MAILBOX
- 79. REMOVE MAILBOX
- 80. REMOVE MAILBOX
- 81. REMOVE MAILBOX
- 82. REMOVE MAILBOX
- 83. REMOVE MAILBOX
- 84. REMOVE MAILBOX
- 85. REMOVE MAILBOX
- 86. REMOVE MAILBOX
- 87. REMOVE MAILBOX
- 88. REMOVE MAILBOX
- 89. REMOVE MAILBOX
- 90. REMOVE MAILBOX
- 91. REMOVE MAILBOX
- 92. REMOVE MAILBOX
- 93. REMOVE MAILBOX
- 94. REMOVE MAILBOX
- 95. REMOVE MAILBOX
- 96. REMOVE MAILBOX
- 97. REMOVE MAILBOX
- 98. REMOVE MAILBOX
- 99. REMOVE MAILBOX
- 100. REMOVE MAILBOX

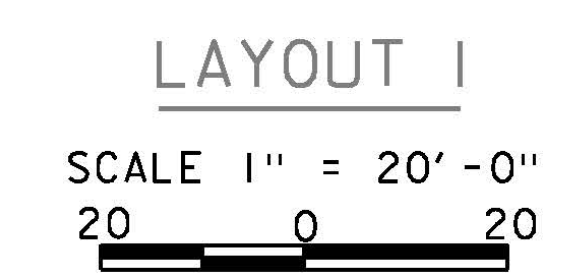
- 1. CURVE (1)
DELTA = 2°00'00"
D = 1°00'00"
R = 5729.58'
T = 100.01'
L = 200.00'
E = 0.87'
- 2. NO TRIMMING OF THIS ROW OF HEDGES
- 3. BEGIN APPROACH
STA. 291+25.00
MATCH EXISTING
- 4. REMOVE MAILBOX
- 5. REMOVE MAILBOX
- 6. REMOVE MAILBOX
- 7. REMOVE MAILBOX
- 8. REMOVE MAILBOX
- 9. REMOVE MAILBOX
- 10. REMOVE MAILBOX
- 11. REMOVE MAILBOX
- 12. REMOVE MAILBOX
- 13. REMOVE MAILBOX
- 14. REMOVE MAILBOX
- 15. REMOVE MAILBOX
- 16. REMOVE MAILBOX
- 17. REMOVE MAILBOX
- 18. REMOVE MAILBOX
- 19. REMOVE MAILBOX
- 20. REMOVE MAILBOX
- 21. REMOVE MAILBOX
- 22. REMOVE MAILBOX
- 23. REMOVE MAILBOX
- 24. REMOVE MAILBOX
- 25. REMOVE MAILBOX
- 26. REMOVE MAILBOX
- 27. REMOVE MAILBOX
- 28. REMOVE MAILBOX
- 29. REMOVE MAILBOX
- 30. REMOVE MAILBOX
- 31. REMOVE MAILBOX
- 32. REMOVE MAILBOX
- 33. REMOVE MAILBOX
- 34. REMOVE MAILBOX
- 35. REMOVE MAILBOX
- 36. REMOVE MAILBOX
- 37. REMOVE MAILBOX
- 38. REMOVE MAILBOX
- 39. REMOVE MAILBOX
- 40. REMOVE MAILBOX
- 41. REMOVE MAILBOX
- 42. REMOVE MAILBOX
- 43. REMOVE MAILBOX
- 44. REMOVE MAILBOX
- 45. REMOVE MAILBOX
- 46. REMOVE MAILBOX
- 47. REMOVE MAILBOX
- 48. REMOVE MAILBOX
- 49. REMOVE MAILBOX
- 50. REMOVE MAILBOX
- 51. REMOVE MAILBOX
- 52. REMOVE MAILBOX
- 53. REMOVE MAILBOX
- 54. REMOVE MAILBOX
- 55. REMOVE MAILBOX
- 56. REMOVE MAILBOX
- 57. REMOVE MAILBOX
- 58. REMOVE MAILBOX
- 59. REMOVE MAILBOX
- 60. REMOVE MAILBOX
- 61. REMOVE MAILBOX
- 62. REMOVE MAILBOX
- 63. REMOVE MAILBOX
- 64. REMOVE MAILBOX
- 65. REMOVE MAILBOX
- 66. REMOVE MAILBOX
- 67. REMOVE MAILBOX
- 68. REMOVE MAILBOX
- 69. REMOVE MAILBOX
- 70. REMOVE MAILBOX
- 71. REMOVE MAILBOX
- 72. REMOVE MAILBOX
- 73. REMOVE MAILBOX
- 74. REMOVE MAILBOX
- 75. REMOVE MAILBOX
- 76. REMOVE MAILBOX
- 77. REMOVE MAILBOX
- 78. REMOVE MAILBOX
- 79. REMOVE MAILBOX
- 80. REMOVE MAILBOX
- 81. REMOVE MAILBOX
- 82. REMOVE MAILBOX
- 83. REMOVE MAILBOX
- 84. REMOVE MAILBOX
- 85. REMOVE MAILBOX
- 86. REMOVE MAILBOX
- 87. REMOVE MAILBOX
- 88. REMOVE MAILBOX
- 89. REMOVE MAILBOX
- 90. REMOVE MAILBOX
- 91. REMOVE MAILBOX
- 92. REMOVE MAILBOX
- 93. REMOVE MAILBOX
- 94. REMOVE MAILBOX
- 95. REMOVE MAILBOX
- 96. REMOVE MAILBOX
- 97. REMOVE MAILBOX
- 98. REMOVE MAILBOX
- 99. REMOVE MAILBOX
- 100. REMOVE MAILBOX

- 1. TOWN OF DUXBURY
- 2. BEGIN R.O.W. PROJECT
DUXBURY BF 013-4(47)
STA. 290+77, 26' LT
- 3. R=5762.58
L=40.02
289+90.81
32.92' LT
289+51.01
32.89' LT
- 4. HVCTRL #4
EL 524.38
- 5. PC N 663627.56
E 1572803.88
289+51.08, 70.11' RT
- 6. 289+36.08
70.12' RT
- 7. R=5659.58
L=197.56'
- 8. PT 291+51.08
69.97' RT
- 9. STA 291+51.36
- 10. STA 291+51.36
- 11. 174.20'
N30°52'18"E
- 12. PC 293+25.29
69.85' RT
- 13. R=1021.95
L=219.46'
- 14. 295+19.23
69.77' RT
- 15. 295+02.37
90.80' RT
- 16. S 90.80' RT
- 17. TYPE III (TYP)

- 1. FLOODWAY AND FLOOD FRINGE DELINEATION BOUNDARIES ARE APPROXIMATED FROM PUBLISHED NATIONAL FLOOD INSURANCE PROGRAM (NFIP) MAPS DATED MARCH 19, 2013.
- 2. THE BASE FLOOD ELEVATION (Q100) AT THE BRIDGE INLET IS APPROXIMATELY 505.0 IN NAVD 88 PER FEMA FIS NO 50023CV002A.
- 3. ANR RIVER CORRIDOR DELINEATION BOUNDARIES ARE APPROXIMATED FROM MAPS PRODUCED BY "FLOOD READY VERMONT" STATE PROGRAM.

- NOTES:**
1. DRIVE APRONS SHALL BE ONE LIFT, 3" THICK, TYPE IVS, TO BE PAID UNDER ITEM 900.680, "SPECIAL PROVISION (BITUMINOUS CONCRETE PAVEMENT, SMALL QUANTITY)".
 2. DISTURBED PORTIONS OF THE GRAVEL DRIVE NEAR STA 292+14, RT SHALL BE RECONSTRUCTED IN ACCORDANCE WITH STANDARD B-71 AFTER REMOVAL OF TEMPORARY ROADWAY.
 3. TEMPORARY DRIVE FOR UTILITY ACCESS SHALL BE CONSTRUCTED PRIOR TO COMMENCEMENT OF EXCAVATION FOR THE PROPOSED BRIDGE. THE DRIVE SHALL BE 15 FT WIDE AND CONSIST OF 1 FT OF "SUBBASE OF GRAVEL" PLACED ON "GEOTEXTILE UNDER STONE FILL". PAYMENT WILL BE INCIDENTAL.

SEE WITH HSD-621.06.



EXISTING CULVERT DATA
SINGLE 15'-10" X 10'-8" CGMPA
CONSTRUCTED IN 1977
STRUCTURE LENGTH = 158'-0"

FOR R.O.W. USE ONLY

LINES SHOWN ON THIS PLAN AS EXISTING PROPERTY LINES P/L ARE BELIEVED TO BE ACCURATE BUT SHOULD NOT BE RELIED UPON FOR PURPOSES UNRELATED TO THE STATE OF VERMONT'S ACQUISITION OF LAND AND RIGHTS FOR THIS PROJECT.

PROJECT NAME: DUXBURY	PLOT DATE: 06-JUN-2016
PROJECT NUMBER: BF 013-4(47)	DRAWN BY: T. POLK
FILE NAME: r16b001lay1.dgn	CHECKED BY: S. PATTERSON
PROJECT LEADER: K. HIGGINS	SHEET 4 OF 19
DESIGNED BY: TYLIN	
R.O.W. LAYOUT SHEET 1 OF 2	