

INDEX OF SHEETS

SHEET NO.	TITLE PAGE
1	TITLE PAGE
2	TYPICAL CROSS-SECTION OF IMPROVEMENT (GRADINGS, BASE & DRAINAGE WITH DOUBLE TACK COAT OF REFINED TAR-ITEM 29)
3	BANKING AND WIDENING TABLES
4-9	PLAN AND PROFILE SHEETS
10	STANDARD STRUCTURE SHEET 3-20; PIPE CULVERTS
11	" " " " 3-29; BOX CULVERTS
12	" " " " 3-30; GUTTER RAIL
13	" " " " 3-31; DOUBLE LANE MARKERS
14	" " " " 3-40; BARRIERS, SIGNS & LIGHTS
15-16	DETAILS OF 4' x 6' R.C. BOX STA. 557 + 12
17-40	CROSS-SECTIONS

Standard Structure Sheets approved by the Chief Engineer.

329	July 11, 1933
329	July 11, 1933
330	Aug 15, 1934
331	July 25, 1934

FED. ROAD DIST. NO.	STATE	FED. AID PROJ. NO.	FISCAL YEAR	SHEET NO.	TOTAL SHEETS
9	VT.	1007	1937	1	40

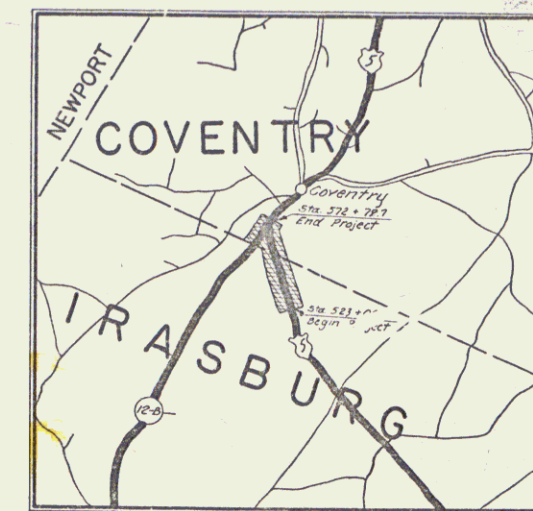
STATE OF VERMONT  
STATE HIGHWAY DEPARTMENT

PLAN AND PROFILE OF PROPOSED  
STATE HIGHWAY  
FEDERAL AID PROJECT

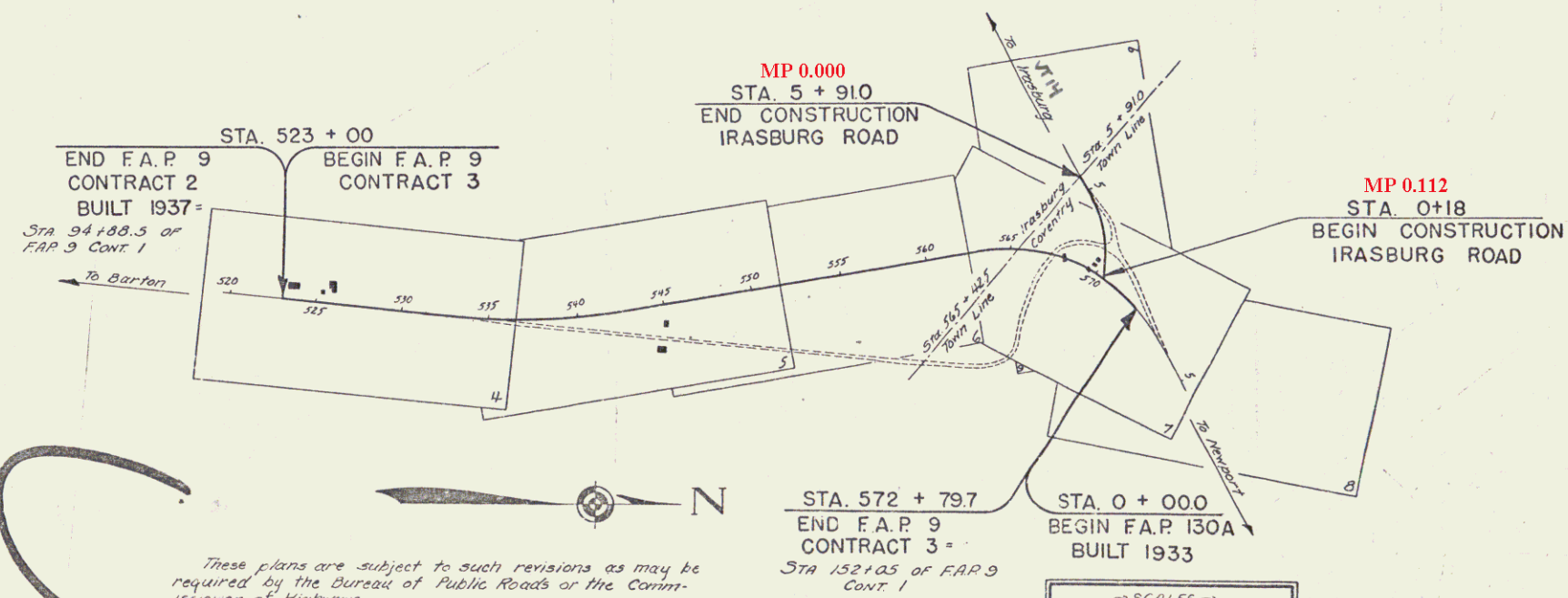
TOWNS OF IRASBURG & COVENTRY

BARTON-NEWPORT ROAD

BEGINNING AT A POINT 4239.4 FT. SOUTH OF THE IRASBURG-COVENTRY TOWN LINE AND EXTENDING NORTHERLY 0.942 MILES TO A POINT 737.2 FT. NORTH OF THE IRASBURG-COVENTRY TOWN LINE.



LENGTH OF PROJECT 4976.6 FEET = 0.942 MILES



CONVENTIONAL SIGNS

COUNTY LINE	.....
TOWN LINE	.....
FENCE LINE	.....
STONE WALL	.....
UNFENCED PROPERTY	.....
GUARD RAIL	.....
TRAVELED WAY	.....
RAILROAD	.....
RETAINING WALL	.....
CENTER LINE	.....
SURVEY LINE	.....
CULVERT	.....
DROP INLET	.....
TROLLEY POLE	.....
POWER POLE	.....
TELEPHONE POLE	.....
TREES	.....
HEDGE	.....

GROUND ELEVATION	BATHY LINE
GRADE ELEVATION	.....

CURVE DATA

DEFLECTION ANGLE	.....
DEGREE OF CURVE	.....
RADIUS OF CURVE	.....
TANGENT DISTANCE	.....
LENGTH OF CURVE	.....
EXTERNAL DISTANCE	.....
POINT OF INTERSECTION	.....
POINT OF CURVE	.....
POINT OF TANGENT	.....
POINT ON TANGENT	.....

These plans are subject to such revisions as may be required by the Bureau of Public Roads or the Commissioner of Highways. Construction is to be carried on in accordance with the plans and Standard Road & Bridge Specifications of 1934, as approved December 23, 1934, by the Bureau of Public Roads, including all subsequent approved revisions and such revised specifications and special provisions as are submitted with the plans.

SCALES

TITLE	1" = 500'
TYPICAL	1" = 2'
PLAN	1" = 50'
PROFILE	1" = 50'
CROSS-SECTIONS	1" = 2'

APPROVED: June 18, 1937  
W. Edgerton  
COMMISSIONER OF HIGHWAYS

SUBMITTED BY ORDER OF THE STATE HIGHWAY BOARD

Pin: 14R999  
Project: FAP 9C.3  
Route: VT14  
Date: 06/10/1937

RECOMMENDED: [Signature]  
DISTRICT ENGINEER BUREAU OF PUBLIC ROADS

RECOMMENDED FOR APPROVAL: [Signature]  
CHIEF ENGINEER BUREAU OF PUBLIC ROADS

APPROVED: [Signature]  
DIRECTOR - BUREAU OF PUBLIC ROADS

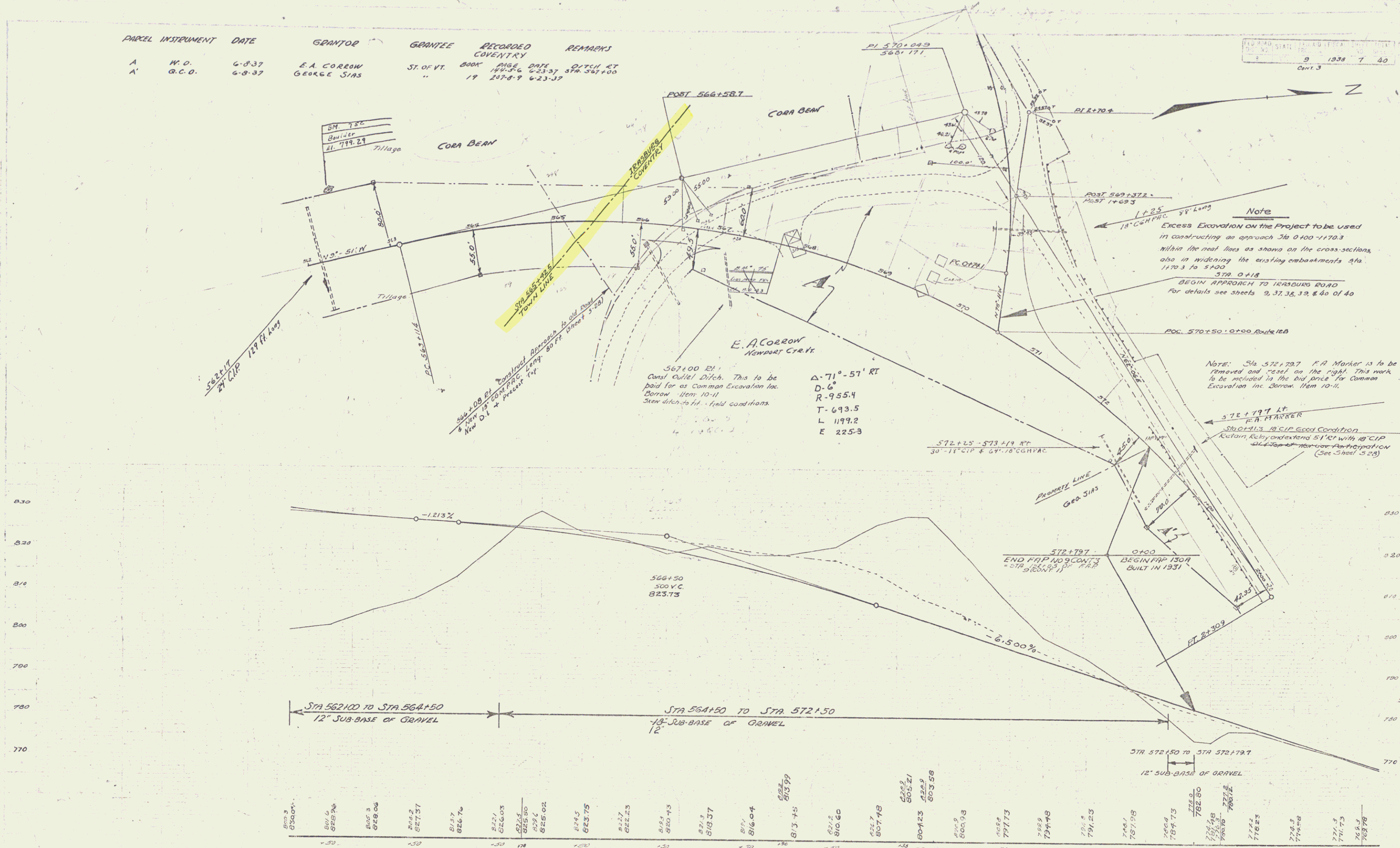
APPROVED: June 10, 1937  
[Signature]  
DISTRICT HIGHWAY COMMISSIONER

CORRECT: June 10, 1937  
[Signature]  
Road Engineer

SERIES FAP NO. 9 (cont.) FILED  
SHEET 1 OF 40

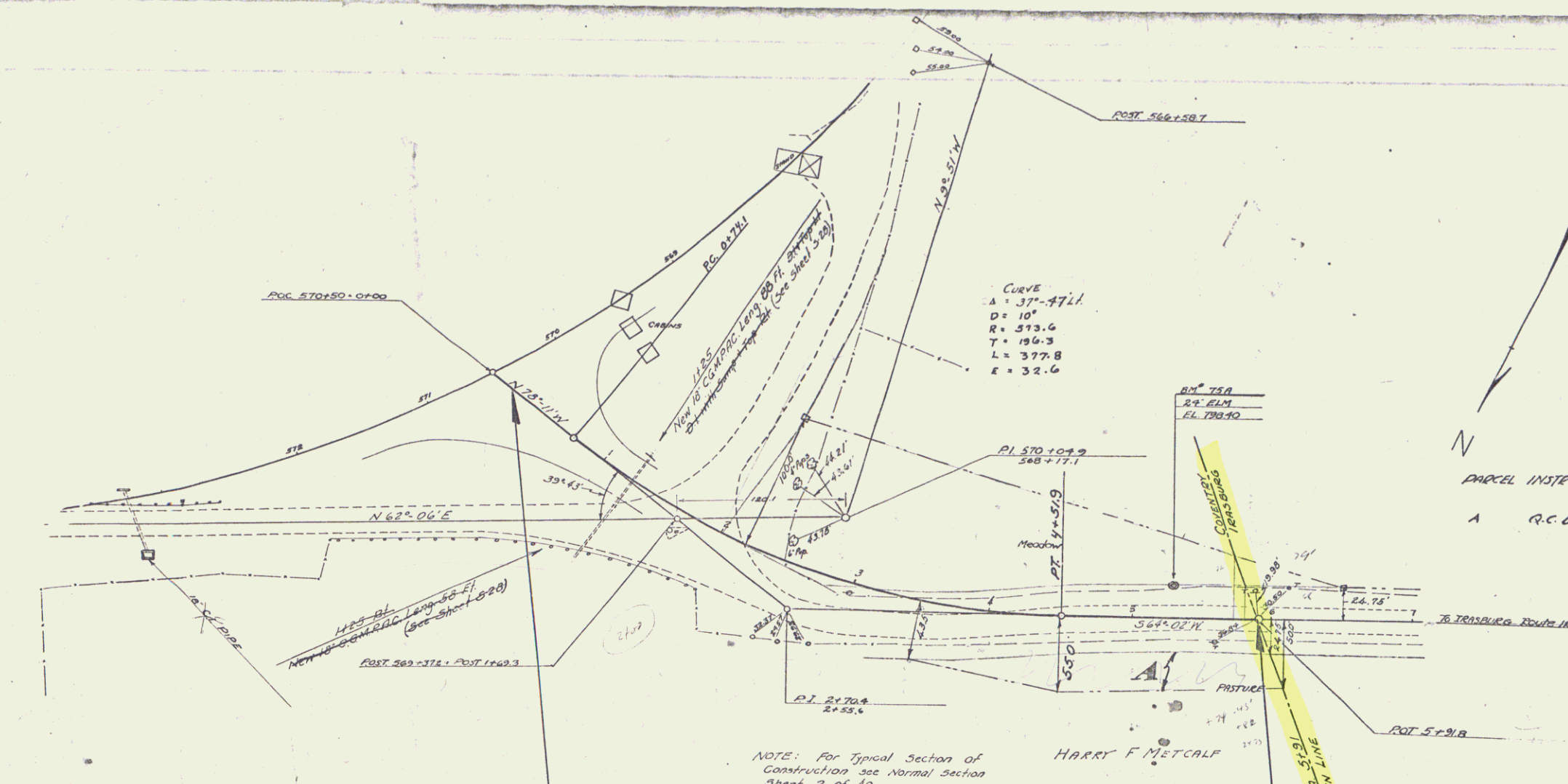
PARCEL	INSTRUMENT	DATE	GRANTOR	GRANTEE	RECORDED COVENTRY	REMARKS
A	W.O.	6-8-37	E.A. CORROW	ST. OF VT.	BOOK PAGE DATE DITCH RT	
A'	O.C.O.	6-8-37	GEORGE SIAS	"	144-56 6-23-37 STA 367+00	
					19 247-8 6-23-37	

NEW HAMPSHIRE  
 STATE ENGINEERING  
 9 1938 T 40  
 Cont. 3



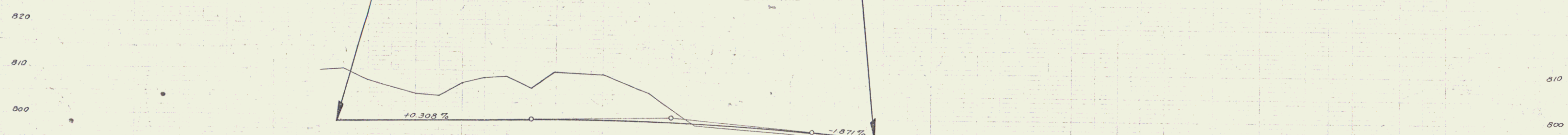
BM 75 SPOT ON SW CORNER GAS PUMP FOUNDATION 13 FT LT OF STA 567+60 EL. 819.43

SERIES F.A.P. NO. 9 CONTRACT 3  
 SHEET 7 OF 40



PARCEL	INSTRUMENT	DATE	GRANTOR	GRANTEE	RECORDED	REMARKS
A	R.C.D.	11-37	HARRY METCALF	STOFF	BOOK 19 PAGE 20	1920 11-6-37

NOTE: For Typical Section of Construction see Normal Section Sheet 2 of 40.



Sta 0+18 to Sta 5+91  
12" Sub-Base of Gravel

STATION	ELEVATION
0+00	798.39
0+10	799.00
0+20	797.7
0+30	799.08
0+40	795.23
0+50	795.31
0+60	795.23
0+70	799.39
0+80	799.46
0+90	799.54
1+00	799.62
1+10	799.67
1+20	799.64
1+30	799.43
1+40	799.26
1+50	799.04
1+60	798.96
1+70	798.72
1+80	797.24
1+90	796.81
2+00	796.0
2+10	795.67
2+20	794.3
2+30	794.35
2+40	793.4
2+50	793.00

BM 75A Spike in Root of 24" Elm 23' Lt. Sta 5+20 Elev. 798.40