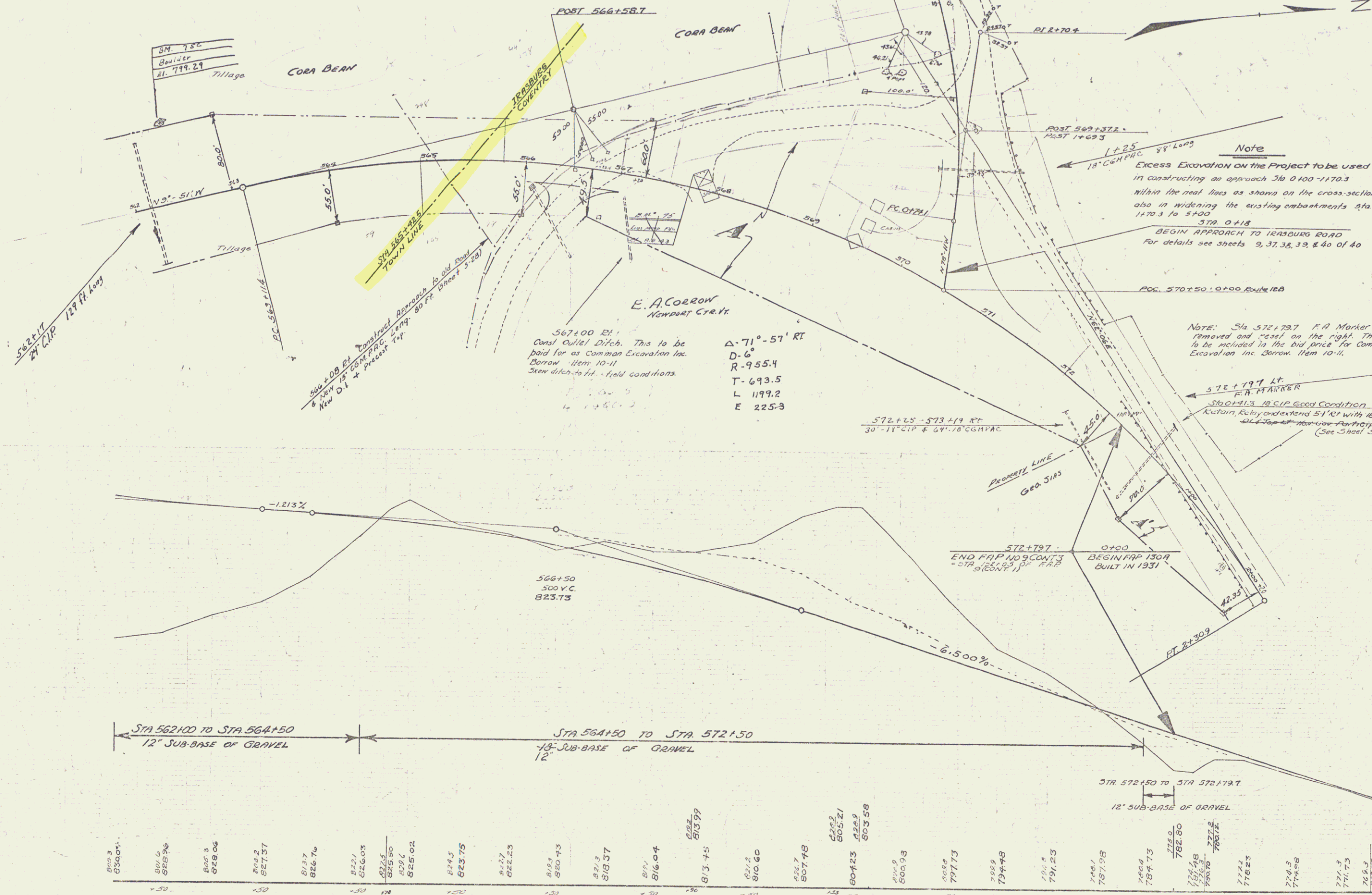


PARCEL	INSTRUMENT	DATE	GRANTOR	GRANTEE	RECORDED COVENTRY	REMARKS
A	W.O.	6-8-37	E.A. CORROW	ST. OF VT.	BOOK PAGE DATE DITCH RT	
A'	O.C.O.	6-8-37	GEORGE SIAS	"	19 148-56 6-23-37 STA 367+00	

NEW ROAD STATE ROAD 1338 T 40
 Cont. 3

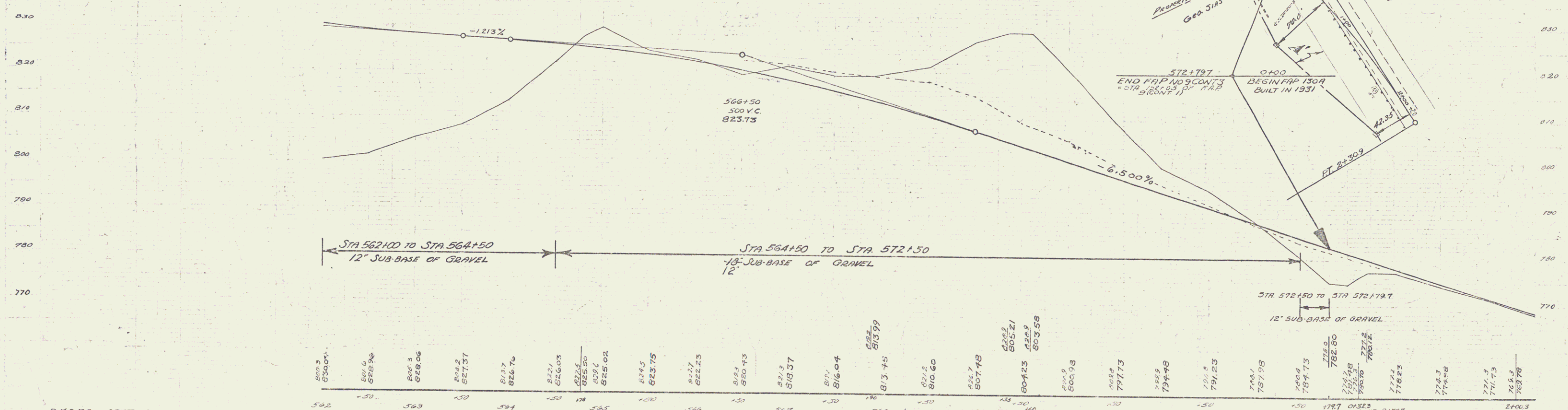


Note
 Excess Excavation on the Project to be used in constructing an approach Sta 0+00-1+70.3 within the neat lines as shown on the cross-sections also in widening the existing embankments Sta 1+70.3 to 5+00.0 STA 0+18
 BEGIN APPROACH TO HENNING ROAD For details see sheets 9, 37, 38, 39, & 40 of 40

Note: Sta 572+70.7 F.A. Marker is to be removed and "reset" on the right. This work to be included in the bid price for Common Excavation inc. Borrow Item 10-11.

Sta 0+13.18 CIP Good Condition
 Custom, Eddy extend 5' 11" with 18" CIP
 ALL TOP SURFACE PARTICIPATION (See Sheet 3-28)

567+00 El.
 Canal Outlet Ditch. This to be paid for as Common Excavation inc. Borrow Item 10-11. Sten ditch to fit field conditions.
 Δ-71°-57' RT
 D-6
 R-955.4
 T-693.5
 L-1199.2
 E-225.8



BM 75 SPOT ON SW CORNER GAS PUMP FOUNDATION 13 FT LT OF STA 567+60 EL. 819.43

SERIES F.A.P. NO. 9 CONTRACT 3
 SHEET 7 OF 40