

INDEX OF SHEETS

SHEET NO.	TITLE PAGE
1	TITLE PAGE
2	TYPICAL CROSS-SECTION OF IMPROVEMENT (GRADINGS, BASE & DRAINAGE WITH DOUBLE TACK COAT OF REFINED TAR-ITEM 29)
3	BANKING AND WIDENING TABLES
4-9	PLAN AND PROFILE SHEETS
10	STANDARD STRUCTURE SHEET 3-20; PIPE CULVERTS
11	" " " " 3-29; BOX CULVERTS
12	" " " " 3-30; GUT TO RAIL
13	" " " " 3-31; DOUBLE LANE MARKERS
14	" " " " 3-40; BARRIERS, SIGNS & LIGHTS
15-16	DETAILS OF 4' x 6' R.C. BOX STA. 557 + 12
17-40	CROSS-SECTIONS

Standard Structure Sheets approved by the Chief Engineer:

529	July 11, 1933
529	July 11, 1933
530	Aug 15, 1934
531	July 25, 1934

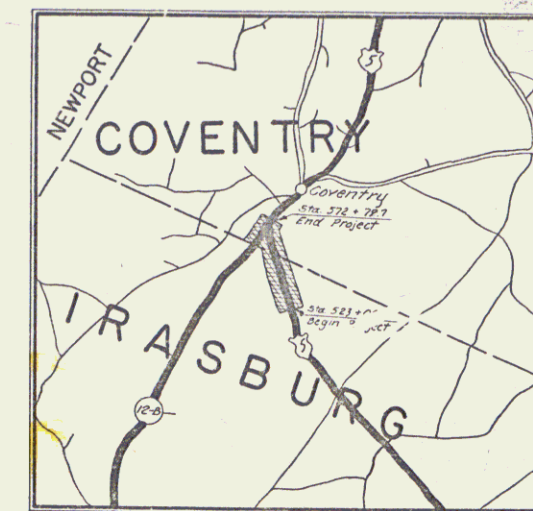
FED. ROAD DIST. NO.	STATE	FED. AID PROJ. NO.	FISCAL YEAR	SHEET NO.	TOTAL SHEETS
9	VT.	1007	1937	1	40

STATE OF VERMONT
 STATE HIGHWAY DEPARTMENT
PLAN AND PROFILE OF PROPOSED STATE HIGHWAY
 FEDERAL AID PROJECT

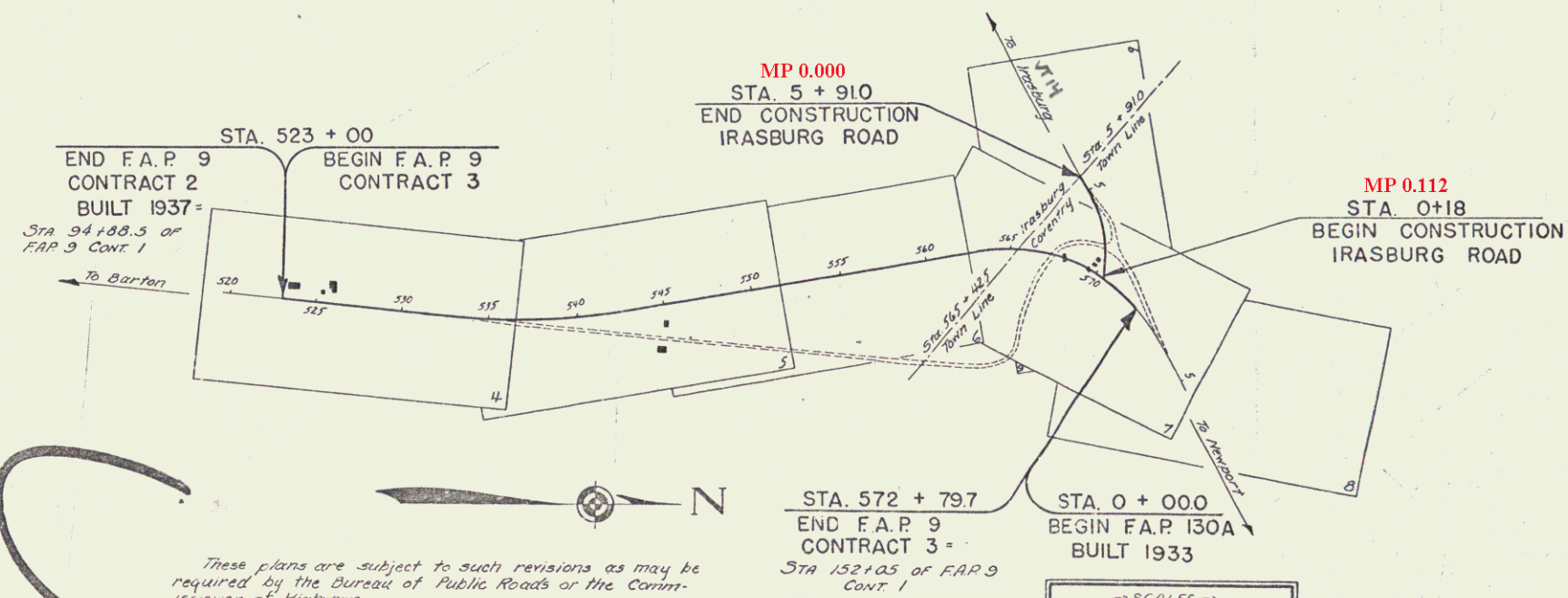
TOWNS OF IRASBURG & COVENTRY

BARTON-NEWPORT ROAD

BEGINNING AT A POINT 4239.4 FT. SOUTH OF THE IRASBURG-COVENTRY TOWN LINE AND EXTENDING NORTHERLY 0.942 MILES TO A POINT 737.2 FT. NORTH OF THE IRASBURG-COVENTRY TOWN LINE.



LENGTH OF PROJECT 4976.6 FEET = 0.942 MILES



CONVENTIONAL SIGNS

- COUNTY LINE
- TOWN LINE
- FENCE LINE
- STONE WALL
- UNFENCED PROPERTY
- GUARD RAIL
- TRAVELED WAY
- RAILROAD
- RETAINING WALL
- CENTER LINE
- SURVEY LINE
- CULVERT
- DROP INLET
- TROLLEY POLE
- POWER POLE
- TELEPHONE POLE
- TREES
- HEDGE

- GROUND ELEVATION
- GRADE ELEVATION

CURVE DATA

- DEFLECTION ANGLE
- RADIUS OF CURVE
- TANGENT DISTANCE
- LENGTH OF CURVE
- EXTERNAL DISTANCE
- POINT OF INTERSECTION
- POINT OF CURVE
- POINT OF TANGENT
- POINT ON TANGENT

These plans are subject to such revisions as may be required by the Bureau of Public Roads or the Commissioner of Highways. Construction is to be carried on in accordance with the plans and Standard Road & Bridge Specifications of 1934, as approved December 23, 1934, by the Bureau of Public Roads, including all subsequent approved revisions and such revised specifications and special provisions as are submitted with the plans.

SCALES

TITLE	1" = 500'
TYPICAL	1" = 2'
PLAN	1" = 50'
PROFILE	1" = 50'
CROSS-SECTIONS	1" = 5'

APPROVED: June 18, 1937
W. Edgerton
 COMMISSIONER OF HIGHWAYS

SUBMITTED BY ORDER OF THE STATE HIGHWAY BOARD

Pin: 14R999
 Project: FAP 9C.3
 Route: VT14
 Date: 06/10/1937

RECOMMENDED: [Signature]
 DISTRICT ENGINEER BUREAU OF PUBLIC ROADS

RECOMMENDED FOR APPROVAL: [Signature]
 CHIEF ENGINEER BUREAU OF PUBLIC ROADS

APPROVED: [Signature]
 DIRECTOR - BUREAU OF PUBLIC ROADS

APPROVED: June 10, 1937
C. O. [Signature]
 DISTRICT HIGHWAY COMMISSIONER

CORRECT: June 10, 1937
[Signature]
 ROAD ENGINEER

SERIES F.A.P. NO. 9 (cont.) FILED
 SHEET 1 OF 40