

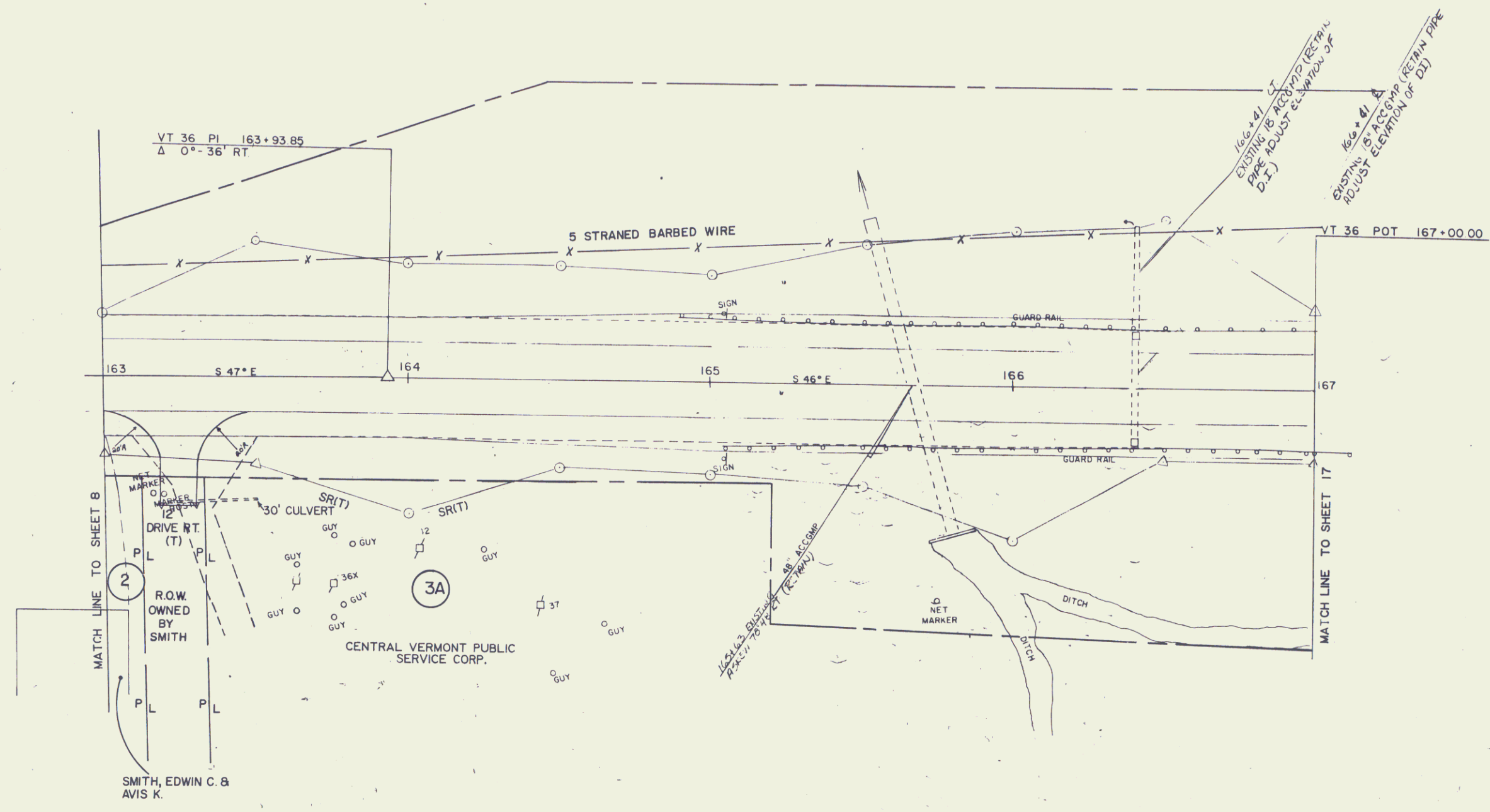
REMOVING & RESETTING  
GUARD RAIL  
163+99 ~ 167+00 RT  
164+13.5 ~ 167+00 LT

165+00 ~ 167+00  
Remove existing Bituminous material  
and add Subbase, Base, and surface  
courses as necessary.

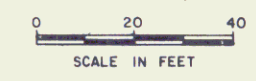
CONSTRUCT DRIVE  
163+25 RT

TREATED TIMBER CURB  
166+41 LT ~ 167+00 LT  
166+41 RT ~ 167+00 RT

CHANGING ELEVATION OF DROP INLETS  
CATCH BASINS OR MANHOLES  
166+41 LT  
166+41 RT



DATUM  
VERTICAL NGVD 1929  
HORIZONTAL N/A



R.O.W. PLANS  
VT 36 STA 163+00 - STA 167+00

ST. ALBANS  
RS 0279(2)  
SHEET 14 OF 17