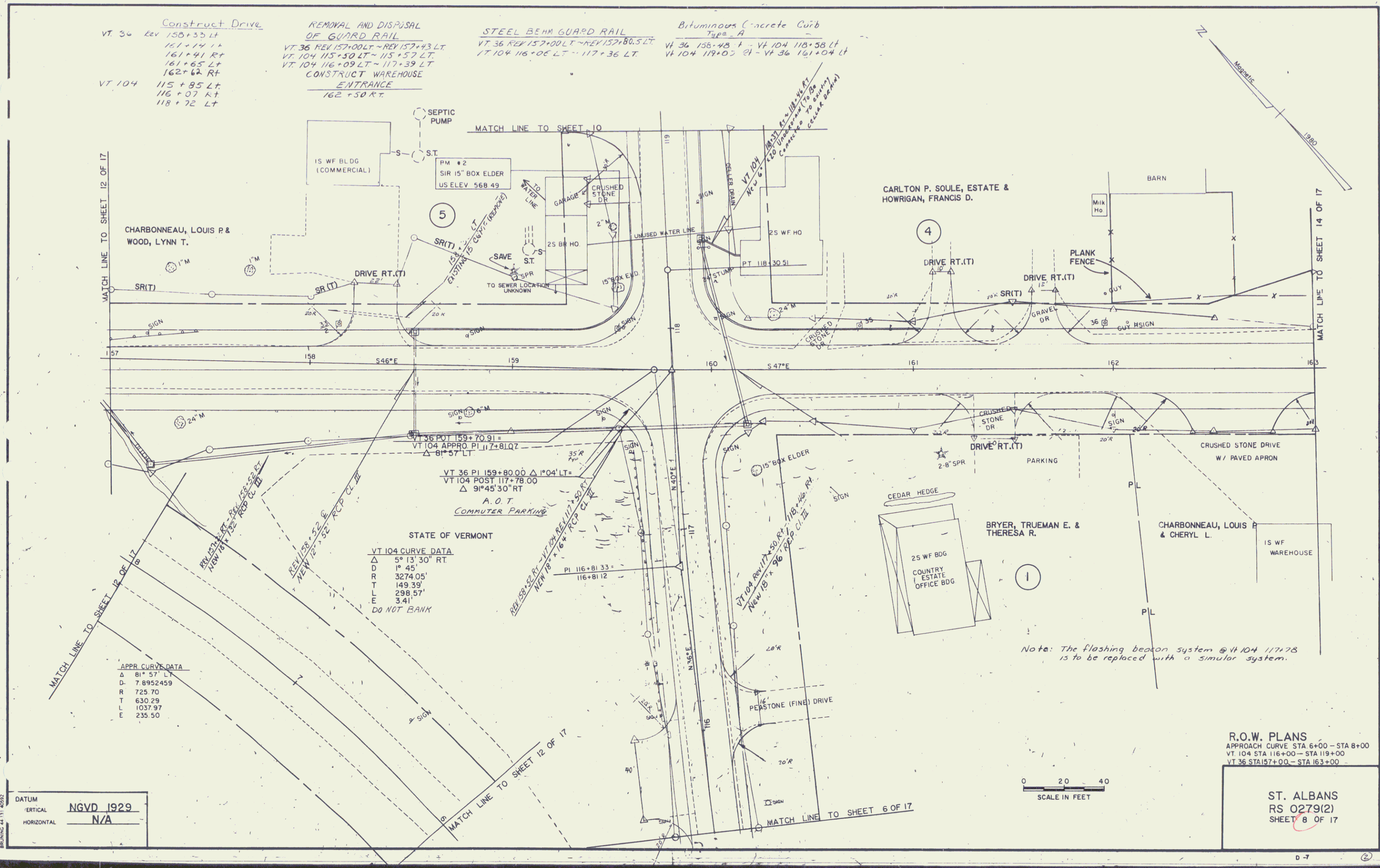


Construct Drive
 VT 36 Rev 158+33 LT
 161+41 RT
 161+65 RT
 162+62 RT
 VT 104 115+85 LT
 116+07 RT
 118+72 LT

REMOVAL AND DISPOSAL
 OF GUARD RAIL
 VT 36 REV 157+00 LT - REV 157+43 LT
 VT 104 113+50 LT - 113+57 LT
 VT 104 116+09 LT - 117+39 LT
 CONSTRUCT WAREHOUSE
 ENTRANCE
 162+50 RT

STEEL BEAM GUARD RAIL
 VT 36 REV 157+00 LT - REV 157+80.5 LT
 VT 104 116+06 LT - 117+36 LT

Bituminous Concrete Curb
 Type A
 VT 36 158+48 F - VT 104 118+38 LT
 VT 104 119+02 RT - VT 36 161+04 LT



MATCH LINE TO SHEET 12 OF 17

MATCH LINE TO SHEET 14 OF 17

MATCH LINE TO SHEET 12 OF 17

MATCH LINE TO SHEET 12 OF 17

MATCH LINE TO SHEET 6 OF 17

APPR CURVE DATA

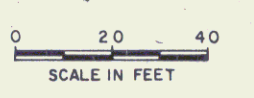
Δ	81° 57' LT
D	7.8952459
R	725.70
T	630.29
L	1037.97
E	235.50

STATE OF VERMONT
VT 104 CURVE DATA

Δ	5° 13' 30" RT
D	1° 45'
R	3274.05'
T	149.39'
L	298.57'
E	3.41'

DO NOT BANK

Note: The flashing beacon system @ VT 104 117+78 is to be replaced with a similar system.



DATUM

VERTICAL	NGVD 1929
HORIZONTAL	N/A

R.O.W. PLANS
 APPROACH CURVE STA 6+00 - STA 8+00
 VT 104 STA 116+00 - STA 119+00
 VT 36 STA 157+00 - STA 163+00

ST. ALBANS
 RS 0279(2)
 SHEET 8 OF 17