

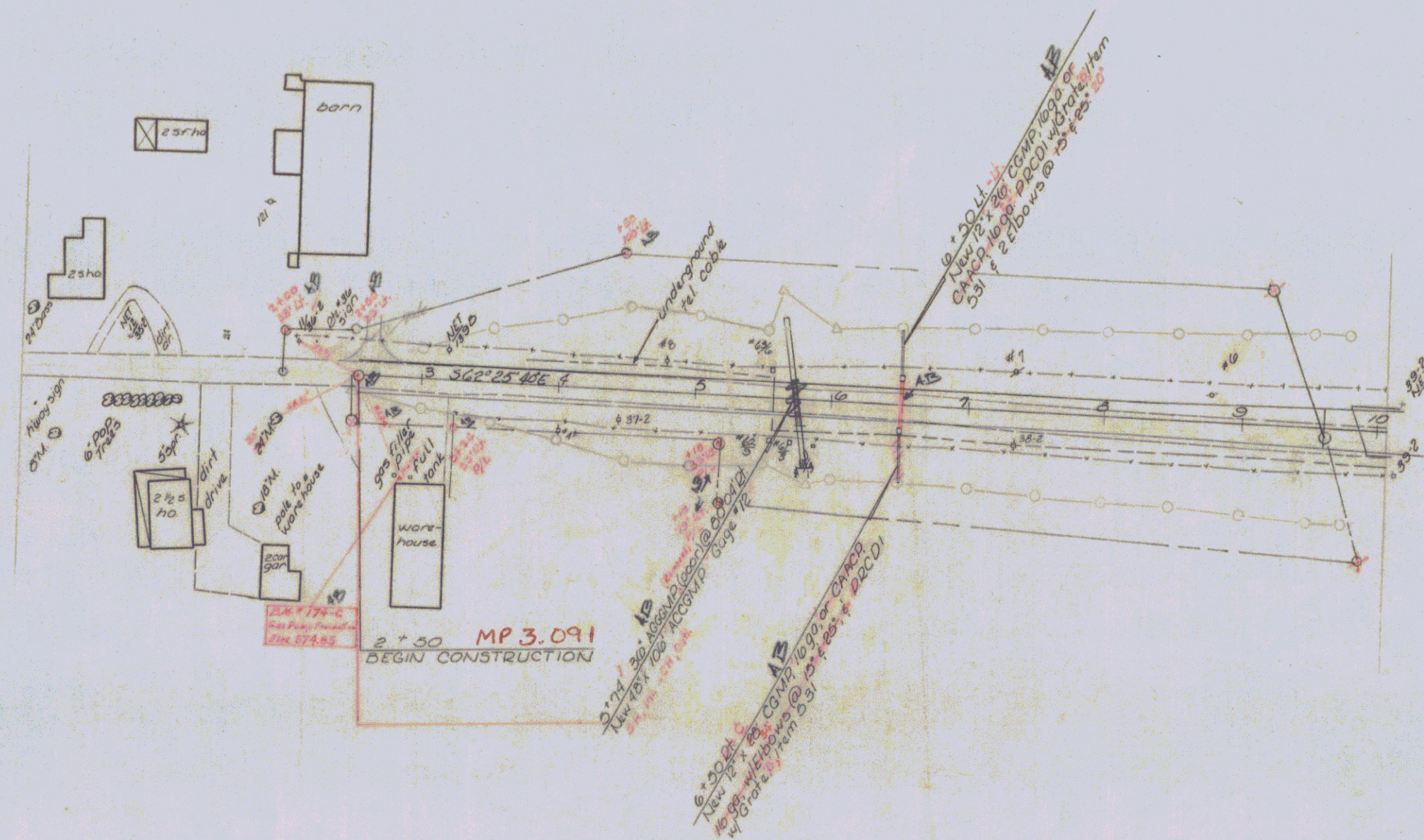
CONSTRUCT DRIVE  
2' 0" LT - 3' 52" RT.

THREE CABLE GUARD RAIL  
W/ STEEL POSTS, ITEM 542  
4' 10" - 9' 17" LT  
4' 0" - 9' 22" RT  
2' 13" - 9' 25" LT  
2' 08" - 9' 28" RT

TREATED TIMBER CURB  
ITEM 550  
0' 49" - 9' 12" LT  
0' 49" - 9' 03" RT

BITUM CONC SURFACE FOR  
GUTTERS AND TRAFFIC ISLAND  
ITEM 554  
0' 50" RT.

STA. 100' OFFSET  
VT. 36 2400 LT. 50' DRILLED WELL

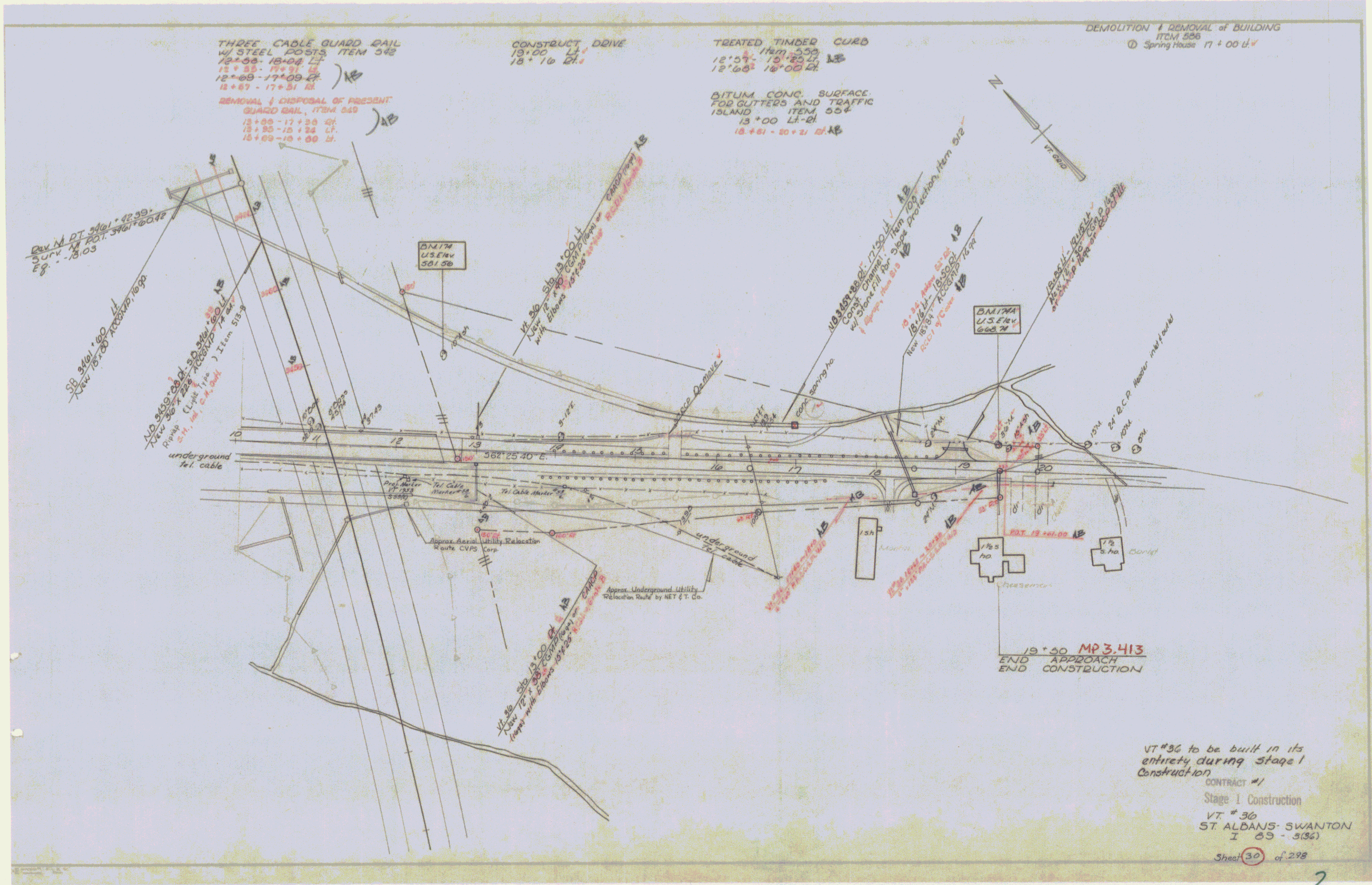


TOWN OF ST. ALBANS  
PIN: 14R994  
PROJECT: I 89-3(36)C1  
ROUTE: VT36  
DATE: 1/1/1967

MP 3.091 - 3.413

VT #36 to be built in its  
entirety during stage 1  
construction

CONTRACT #1  
Stage 1 Construction  
ST ALBANS - SKANTON  
State Highway #36  
I 89 - 3(36)  
Sheet 29 of 298

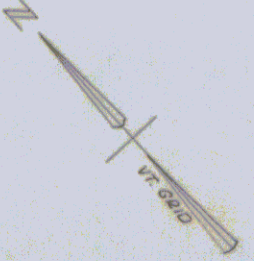


THREE CABLE GUARD RAIL  
W/ STEEL POSTS ITEM 542  
12+00-16+04 LF  
12+25-17+51 LF  
12+00-17+09 LF  
13+67-17+51 LF  
REMOVAL & DISPOSAL OF PRESENT  
GUARD RAIL, ITEM 540  
13+00-17+20 LF  
13+25-15+24 LF  
13+00-15+00 LF

CONSTRUCT DRIVE  
13+00 LF  
13+10 LF

TREATED TIMBER CURB  
Item 550  
12+07-12+20 LF  
12+00-16+00 LF  
BITUM CONC. SURFACE  
FOR GUTTERS AND TRAFFIC  
ISLAND ITEM 554  
13+00 LF  
13+61-20+21 LF

DEMOLITION & REMOVAL of BUILDING  
ITEM 556  
Spring House 17+00 LF



VT #36 to be built in its  
entirety during Stage I  
Construction  
CONTRACT #1  
Stage I Construction  
VT #36  
ST. ALBANS-SWANTON  
I 89 - 3(36)  
Sheet 30 of 298