

INDEX OF SHEETS

1	TITLE PAGE
2	TYPICAL CROSS-SECTION OF IMPROVEMENT CRUSHED GRAVEL MIXED-IN-PLACE SURFACE COURSE WITH OUTSIDE ASPHALT, ITEM 342 (900)
3	BANKING AND WIDENING TABLES
4	QUANTITY SHEET (ITEMS)
5	QUANTITY SHEET (DRAINAGE)
6-7	EARTHWORK SHEETS
8-11	PLAN AND PROFILE SHEETS
12	DETAILS - 120° CORR. GALV. METAL PLATE PIPE
13	CONSTRUCTION DETAILS (DRAINAGE AND MARKERS)
14	CONSTRUCTION DETAILS CD 1 (DITCHES)
15	CONSTRUCTION DETAILS CD 2 (TYPICAL GRADING)
16	CONSTRUCTION DETAILS CD 4 (GRANITE CURB)
17	STANDARD STRUCTURE SHEET S 40 (BARRICADES, SIGNS AND LIGHTS)
18	STANDARD STRUCTURE SHEET S 46-46 (THREE CABLE GUARD RAIL W/STEEL POSTS)
18A	STANDARD STRUCTURE SHEET (DEAD END ANCHORAGE AT BRIDGE APPROACH)
19	STANDARD STRUCTURE SHEET 53-48 (PRECAST DROP INLETS)
20-41	CROSS SECTIONS
42	PRELIMINARY INFORMATION SHEET
43	BRIDGE PLAN & ELEVATION
44	CUBICAL SPIRAL-EASEMENT CURVE
45	DETAILS OF ABUTMENT NO. 1
46	DETAILS OF PIER NO. 1
47	DETAILS OF PIER NO. 2
48	DETAILS OF PIER NO. 3
49	DETAILS OF PIER NO. 4
50	DETAILS OF ABUTMENT NO. 2
51	SUPERSTRUCTURE SO APPROACH SPAN
52	SUPERSTRUCTURE CONTINUOUS SPAN
53	DETAILS OF BM. DIAPH. BRGS. CONT. SPAN.
54	SUPERSTRUCTURE NO. APPROACH SPAN
55	SIDEWALK EXP. JOINT ABUTMENT NOS. 1 & 2
56	SIDEWALK EXP. JOINT PIER NOS. 1 & 4
57	LAYOUT OF BRIDGE RAIL
58	DETAILS OF POST AND RAILING AND SUMMARY OF EST. QUANTITY
59	SO. APPROACH SLAB
60	NO. APPROACH SLAB
61	STANDARD STRUCTURE SHEET SB-20 (DETAIL D. L. N.)
62	STANDARD STRUCTURE SHEET SB-11 (BARRICADES, SIGNS AND LIGHTS)
63-68	NO. CHANNEL SECTIONS
69-70	NO. CHANNEL SECTIONS

STATE OF VERMONT  
STATE HIGHWAY DEPARTMENT

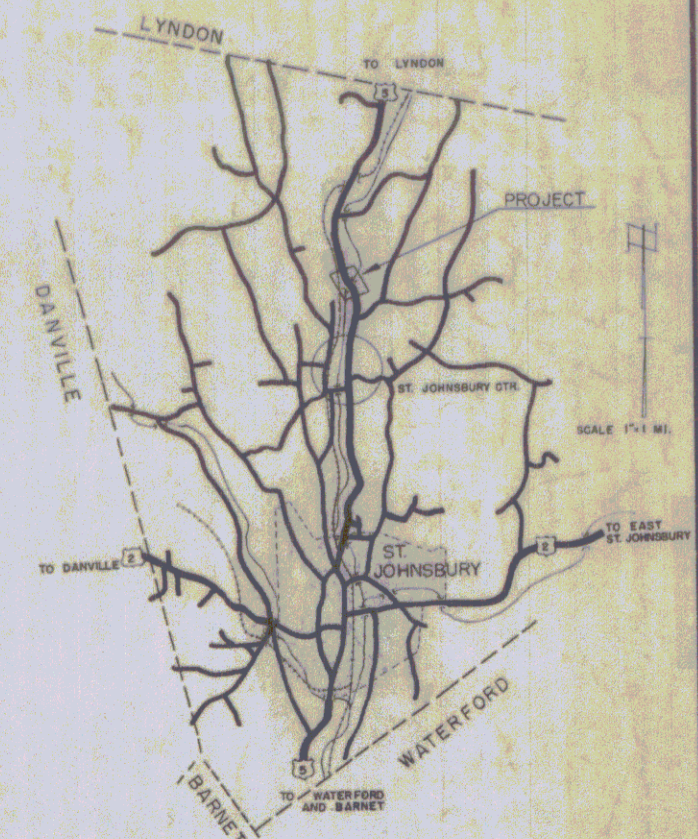
PLAN AND PROFILE OF PROPOSED  
STATE HIGHWAY

FEDERAL INTERSTATE PROJECT  
**TOWN OF ST. JOHNSBURY,**  
COUNTY OF CALEDONIA  
**U.S. ROUTE 5**  
ST. JOHNSBURY-LYNDONVILLE ROAD

BEGINNING AT A POINT 12,110.0 FEET NORTHERLY OF THE NORTHERLY VILLAGE LIMITS OF THE VILLAGE OF ST. JOHNSBURY AND EXTENDING NORTHERLY 2,550.0 FT.

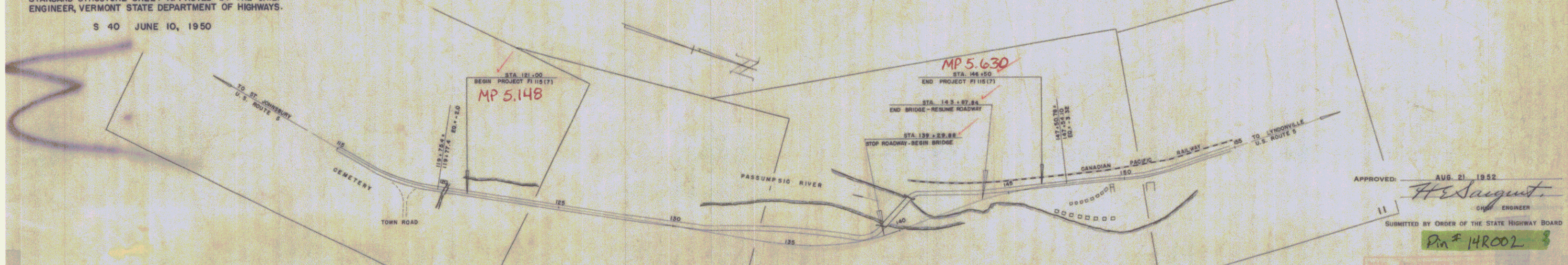
LENGTH OF ROADWAY 2092.04 FT = 0.396 MI.  
LENGTH OF BRIDGE 457.96 FT = 0.087 MI.  
LENGTH OF PROJECT 2550.0 FT = 0.483 MI.

POST MILE	STATE	FEED NO.	FEED SHEET NO.	TOTAL SHEETS
1	VT.	FL 115 (7)	1	70



STANDARD STRUCTURE SHEET APPROVED BY THE CHIEF ENGINEER, VERMONT STATE DEPARTMENT OF HIGHWAYS.

S 40 JUNE 10, 1950



APPROVED: AUG 21 1952  
*H. E. Saquet*  
CHIEF ENGINEER  
SUBMITTED BY ORDER OF THE STATE HIGHWAY BOARD  
Plan # 14R002

COUNTY LINE	---
TOWN LINE	---
FEN - LINE	---
STONE WALL	---
UNFENCED PROPERTY	---
GUARD RAIL	---
TRAVELED WA	---
RAILROAD	---
RETAINING WALL	---
CENTER LINE	---
SURVEY LINE	---
CULVERT	---
DROP INLET	---
TROLLEY POLE	---
POWER POLE	---
TELEPHONE POLE	---
TREES	---
HEDGE	---

GROUND ELEVATION	DATUM	FEET
GRADE ELEVATION	DATUM	FEET

CURVE DATA

DEFLECTION ANGLE	Δ
DEGREE OF CURVE	D
RADIUS OF CURVE	R
TANGENT DISTANCE	T
LENGTH OF CURVE	L
EXTERNAL DISTANCE	E
POINT OF INTERSECTION	P. I.
POINT OF CURVE	P. C.
POINT OF TANGENT	P. T.
POINT ON TANGENT	P. O. T.

PROJECT NAME & NUMBER	TYPE	PAVEMENT AREA	
ST. JOHNSBURY FL 115 (7)	M.P. SURFACE	5330 S.Y.	
RECORD PLANS			
MATERIALS			
SUB-BASE OF GRAVEL	CALEDONIA SAND & GRAVEL CO., WATERFORD	REINF. STEEL BETHLEHEM STEEL CO., BOSTON, MASS.	
CONC. AGGREGATES	SOC. VERRILL, E. PROV., R.I.	RCP VT CONCRETE PIPE CORR. WINDSOR	
STRUC. STEEL	VT. STRUCT. STEEL CO., BURLINGTON	ACCGMP NEW ENG. MET. CO., BOSTON, MASS.	
ASPHALT	SOC. VERRILL, E. PROV., R.I.	CABLE FOR G. R. WEST & WIRE CO., NEW HAVEN, CONN.	
CEMENT	DRAGON PORT CEM. CO., THOMASTON, MAINE	M.P. AGGREGATES CAL. SA. & GR. CO., WATERFORD	
CONTRACTOR	OSCAR L. OLSON, MONTPELIER	CONTRACT DATED	OCTOBER 14, 1952
RESIDENT ENGR.	H. N. BAKER	CONTRACT STARTED	NOVEMBER 20, 1952
INSPECTORS		CONTRACT COMPLETED	SEPTEMBER 8, 1954
RECORD PLANS	J. N. TURNER, FEB. 24, 1955	CONTRACT ACCEPTED	SEPTEMBER 8, 1954

THESE PLANS ARE SUBJECT TO SUCH REVISIONS AS MAY BE REQUIRED BY THE BUREAU OF PUBLIC ROADS OR THE COMMISSIONER OF HIGHWAYS.

CONSTRUCTION IS TO BE CARRIED ON IN ACCORDANCE WITH THE PLANS AND THE STANDARD ROAD AND BRIDGE SPECIFICATIONS OF 1948, AS APPROVED JULY 25, 1949 BY THE BUREAU OF PUBLIC ROADS INCLUDING ALL SUBSEQUENT APPROVED REVISIONS AND SUCH REVISED SPECIFICATIONS AND SPECIAL PROVISIONS AS ARE SUBMITTED WITH THE PLANS.

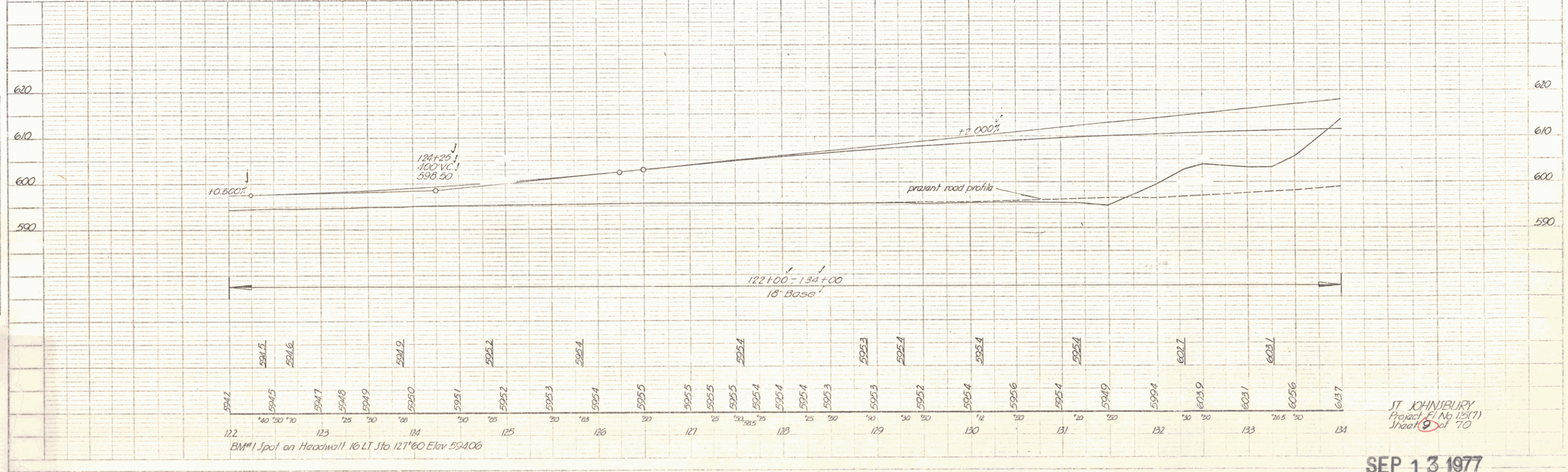
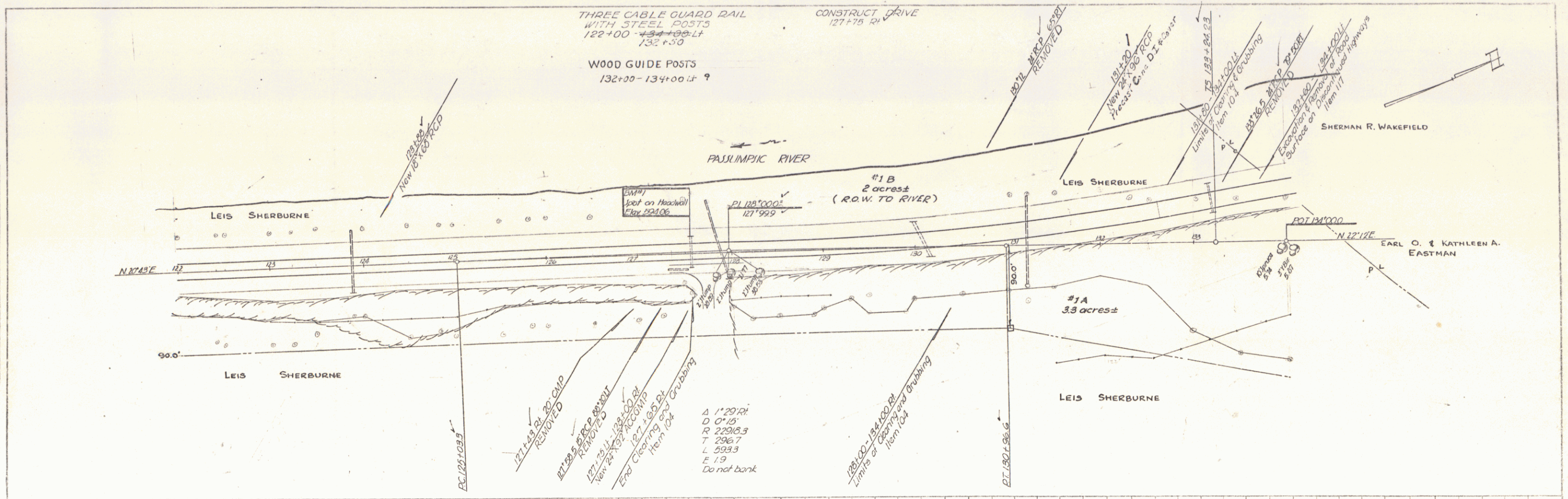
DEPARTMENT OF COMMERCE	BUREAU OF PUBLIC ROADS
RECOMMENDED FOR APPROVAL	
DISTRICT ENGINEER	DATE
APPROVED	
DIVISION ENGINEER	DATE
PROJECT FILE NO. 115 (7)	FILED
SHEET (1) OF 70	

APPROVED	APPROVED	APPROVED	APPROVED
CONSTRUCTION ENGINEER	BRIDGE ENGINEER	HIGHWAY ENGINEER	DISTRICT ENGINEER
<i>[Signature]</i>	<i>[Signature]</i>	<i>[Signature]</i>	<i>[Signature]</i>
		JULY 11 1952	AUG 20 1952



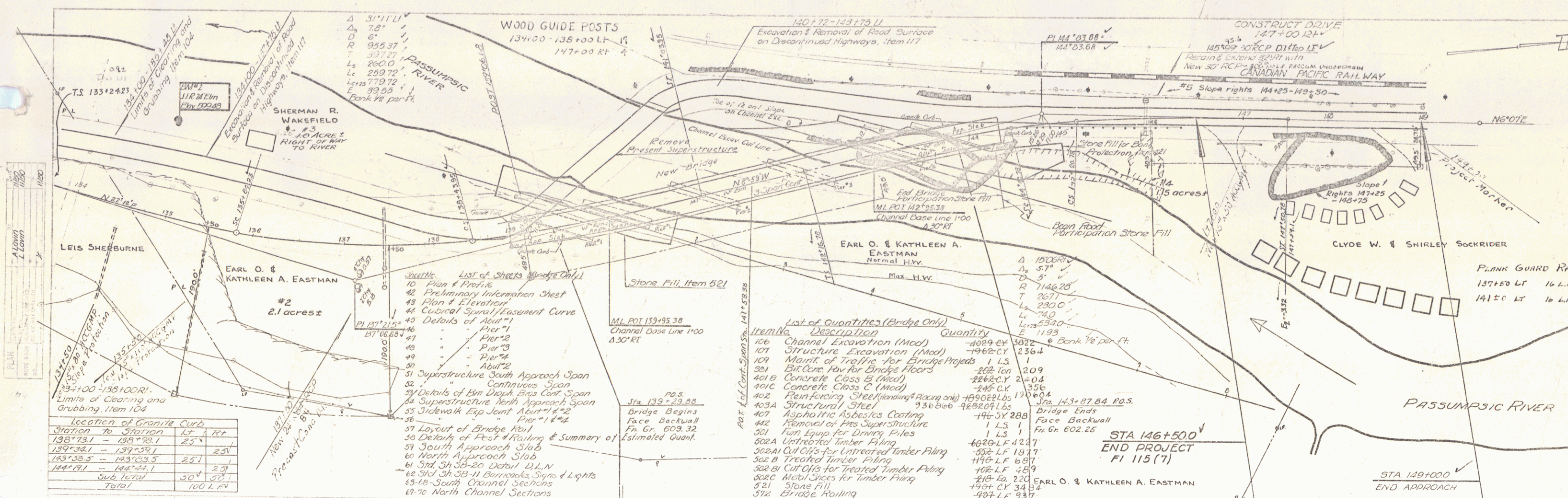
PLAN  
 SHEET NO. 1184  
 DATE 11/84  
 PROJECT NO. 1184  
 DRAWN BY A. Lavin  
 CHECKED BY J. J. J.

PROFILE  
 SHEET NO. 1185  
 DATE 11/84  
 PROJECT NO. 1184  
 DRAWN BY A. Lavin  
 CHECKED BY J. J. J.



JT JOHNRIERY  
 Project #1 No 1184(1)  
 Sheet 9 of 70

SEP 13 1977



ALAN L. LOWN  
11/20  
11/50

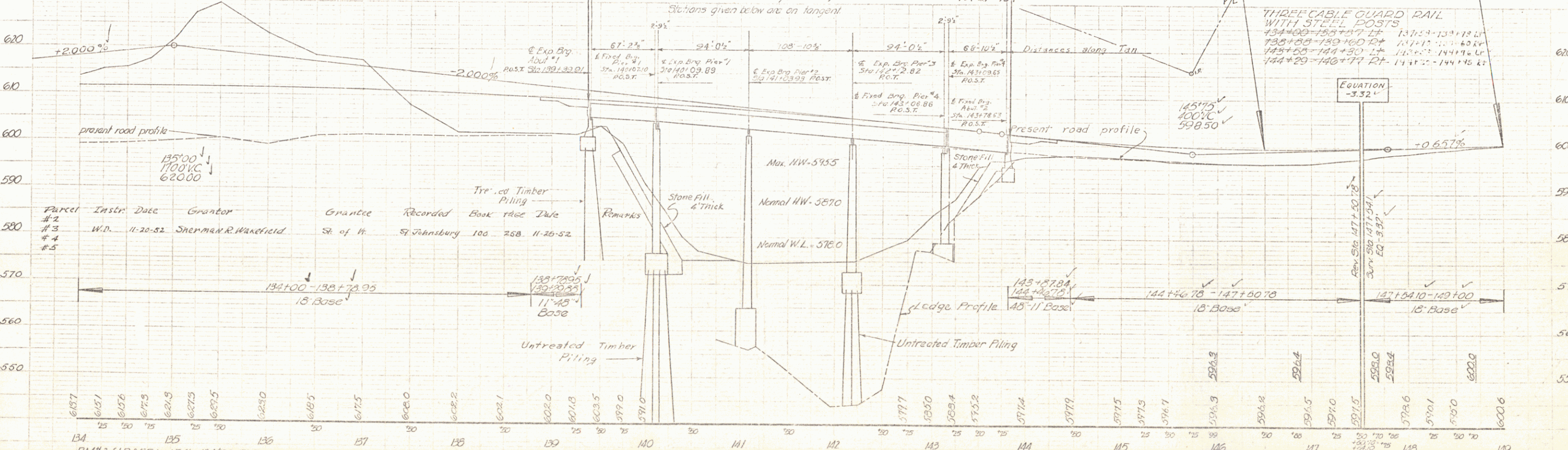
ALAN L. LOWN Jr.  
11/20  
11/50

Location of Granite Curb

Station to Station	LT	RT
138+73.1 - 138+98.1	25'	25'
139+38.1 - 139+39.1	25'	25'
143+38.3 - 143+39.3	25'	25'
144+19.1 - 144+24.1	30'	25'
Sub. Total	30'	25'
Total	100 L.F.	

- List of Sheets (Bridge Only)**
- 10 Plan & Profile
  - 42 Preliminary Information Sheet
  - 43 Plan & Elevation
  - 44 Curved Spiral Easement Curve
  - 40 Details of Abut.
  - 41 Pier #1
  - 42 Pier #2
  - 43 Pier #3
  - 44 Pier #4
  - 45 Abut. #2
  - 51 Superstructure South Approach Span
  - 52 Continuous Span
  - 53 Details of Box Girder Box Conf. Span
  - 54 Superstructure North Approach Span
  - 55 Sidewalk Exp. Joint Abut. #2
  - 56 Pier #1 & #2
  - 57 Layout of Bridge Piling
  - 58 Details of Pier #1 Piling & Summary of
  - 59 South Approach Slab
  - 60 North Approach Slab
  - 61 Std. Sh. 36-20 Detail D.L.N.
  - 62 Std. Sh. 36-11 Borings, Signs & Lights
  - 63-68 South Channel Sections
  - 69-70 North Channel Sections

- List of Quantities (Bridge Only)**
- | Item No. | Description                                   | Quantity    |
|----------|---|-------------|
| 106      | Channel Excavation (Mod)                      | 4089 CY     |
| 107      | Structure Excavation (Mod)                    | 1962 CY     |
| 109      | Maint. of Traffic for Bridge Projects         | 1 LS        |
| 381      | Ext. Stone for Bridge Floors                  | 282 Ton     |
| 401B     | Concrete Class C (Mod)                        | 2442 CY     |
| 401C     | Concrete Class C (Mod)                        | 248 CY      |
| 402      | Reinforcing Steel (including 4' spacing only) | 199022 Lbs. |
| 403A     | Structural Steel                              | 936 Lbs.    |
| 407      | Asphaltic Asbestos Coating                    | 1 LS        |
| 442      | Removal of Present Superstructure             | 1495 CY     |
| 501      | Truck Equip. for Driving Piles                | 1 LS        |
| 502A     | Untreated Timber Piling                       | 6020 LF     |
| 502B     | Cut Cuts for Untreated Timber Piling          | 502 LF      |
| 502C     | Treated Timber Piling                         | 1145 LF     |
| 502D     | Cut Cuts for Treated Timber Piling            | 108 LF      |
| 502E     | Metal Slices for Timber Piling                | 210 Ea.     |
| 521      | Stone Fill                                    | 1994 CY     |
| 576      | Bridge Rolling                                | 497 LF      |



Parcel #	Instr. Date	Grantor	Grantee	Recorded Book	Page	Date	Remarks
#2							
#3	W.D. 11-20-52	Sherman R. Wakefield	St. of H.	St. Johnsbury 100	258	11-26-52	
#4							
#5							

SEP 12 1977  
SEP 13 1977  
STATE OF VERMONT - DEPT. OF HIGHWAYS  
4