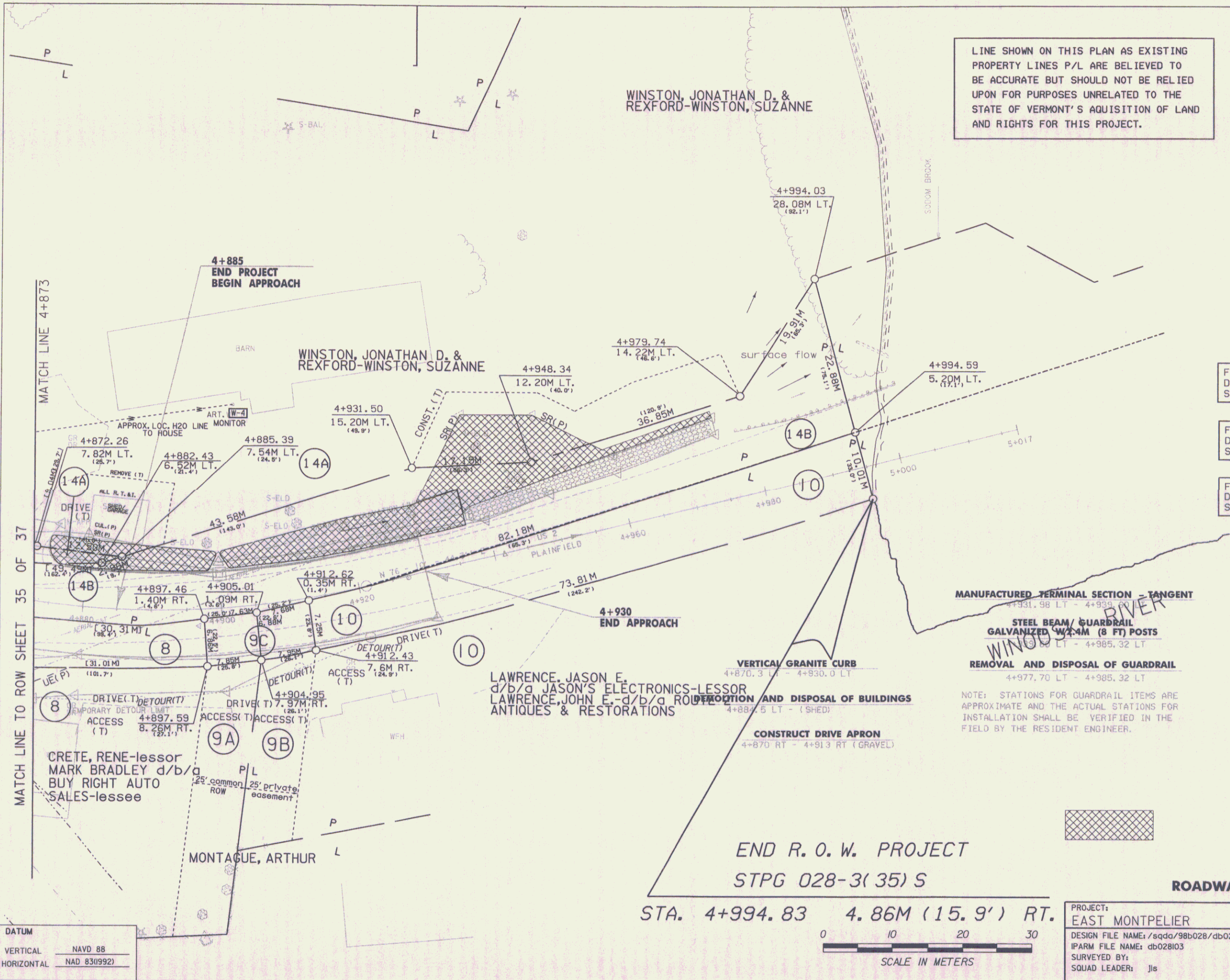


LINE SHOWN ON THIS PLAN AS EXISTING PROPERTY LINES P/L ARE BELIEVED TO BE ACCURATE BUT SHOULD NOT BE RELIED UPON FOR PURPOSES UNRELATED TO THE STATE OF VERMONT'S ACQUISITION OF LAND AND RIGHTS FOR THIS PROJECT.



FOR EROSION CONTROL  
DETAIL SEE R O W  
SHEET 13-19 OF 37

FOR DRAINAGE  
DETAIL SEE R O W  
SHEET 25-28 OF 37

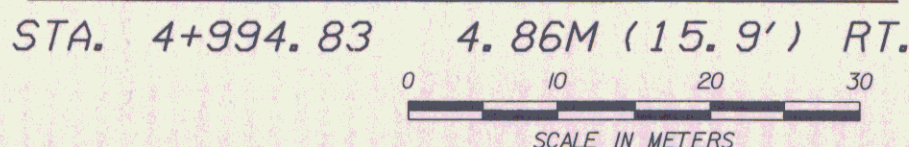
FOR LANDSCAPE  
DETAIL SEE R O W  
SHEET 20-24 OF 37

MANUFACTURED TERMINAL SECTION - TANGENT  
STEEL BEAM / GUARDRAIL  
GALVANIZED W/24M (8 FT) POSTS  
REMOVAL AND DISPOSAL OF GUARDRAIL

NOTE: STATIONS FOR GUARDRAIL ITEMS ARE APPROXIMATE AND THE ACTUAL STATIONS FOR INSTALLATION SHALL BE VERIFIED IN THE FIELD BY THE RESIDENT ENGINEER.



END R. O. W. PROJECT  
STPG 028-3(35) S



DATUM  
VERTICAL NAVD 88  
HORIZONTAL NAD 83(1992)

PROJECT: EAST MONTPELIER	PROJECT NO. 1: STPG 028-3(35)S
DESIGN FILE NAME: /sqda/98b028/db028...bdr,nul,top...dgn	PLOT DATE: 01-JUL-2008
IPARM FILE NAME: db028i03	SURVEY DATE: 8/98
SURVEYED BY:	DRAWN BY: jfg
SQUAD LEADER: jls	ROW SHEET 36 OF 37