

Original Drawing – Ink on Polymer meeting the requirements of 27 V.S.A. § 1403

R. O. W. PLANS

INDEX OF SHEETS

1	TITLE
2	LEGEND
3	DETAIL
4	LAYOUT
5	PI SHEET
6	TYPICAL - BRIDGE
7	TYPICAL - ROADWAY
8	TYPICAL - EARTHWORKS
9	TIE
10	ALIGNMENT
11-12	PROFILES
13	UTILITY
14	EPSC CONSTRUCTION

STATE OF VERMONT AGENCY OF TRANSPORTATION



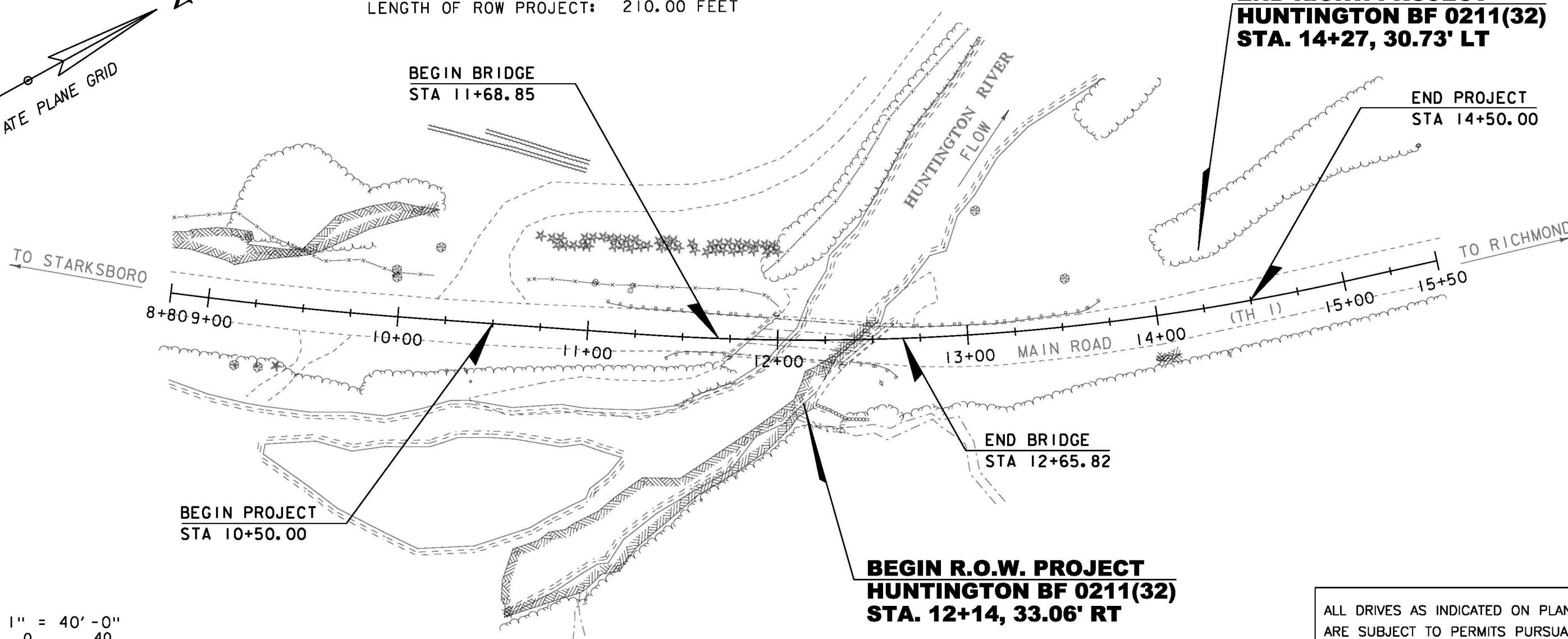
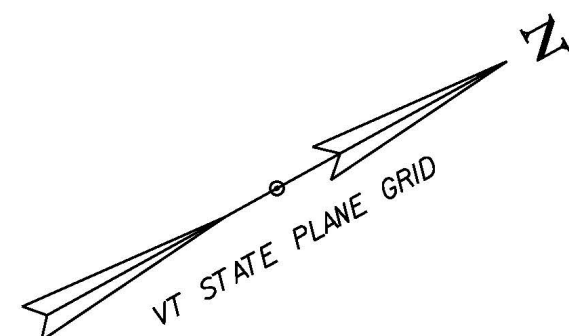
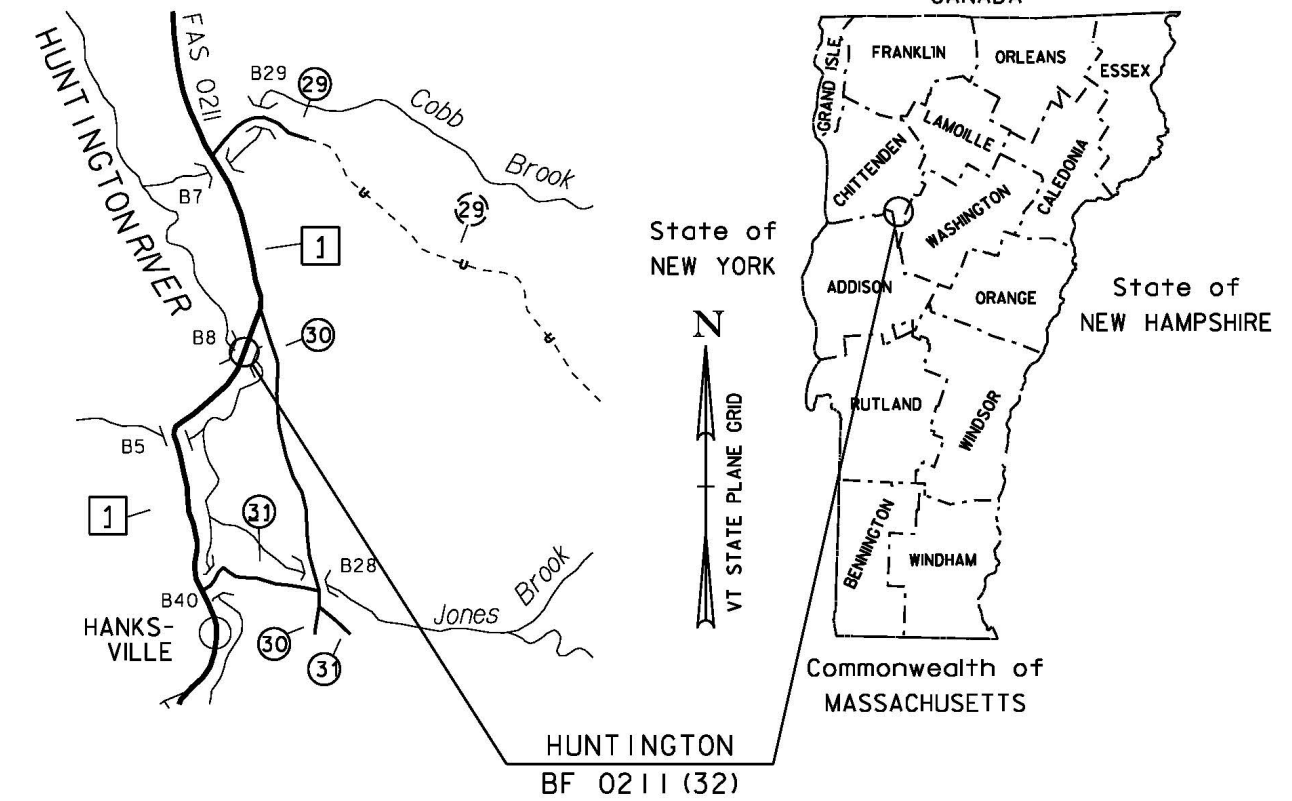
PROPOSED IMPROVEMENT BRIDGE PROJECT

TOWN OF HUNTINGTON
COUNTY OF CHITTENDEN
TH-1, RURAL MAJOR COLLECTOR, FAS ROUTE 0211, BRIDGE NO 8

PROJECT LOCATION: LOCATED IN THE COUNTY OF CHITTENDEN, TOWN OF HUNTINGTON, ON TH 1 (FAS 0211), BRIDGE NO. 8 OVER HUNTINGTON RIVER, APPROXIMATELY 3.9 MILES NORTH OF TH 1'S JUNCTION WITH VT ROUTE 17.

PROJECT DESCRIPTION: WORK TO BE PERFORMED UNDER THIS PROJECT INCLUDES REMOVAL AND REPLACEMENT OF BRIDGE NO. 8 ON A NEW ALIGNMENT WITH ASSOCIATED ROADWAY AND CHANNEL WORK.

LENGTH OF STRUCTURE: 96.97 FEET
LENGTH OF ROADWAY: 303.03 FEET
LENGTH OF PROJECT: 400.00 FEET
LENGTH OF ROW PROJECT: 210.00 FEET



CONSTRUCTION IS TO BE CARRIED ON IN ACCORDANCE WITH THESE PLANS AND THE STANDARD SPECIFICATIONS FOR CONSTRUCTION DATED 2011, AS APPROVED BY THE FEDERAL HIGHWAY ADMINISTRATION ON JULY 20, 2011 FOR USE ON THIS PROJECT, INCLUDING ALL SUBSEQUENT REVISIONS AND SUCH REVISED SPECIFICATIONS AND SPECIAL PROVISIONS AS ARE INCORPORATED IN THESE PLANS.

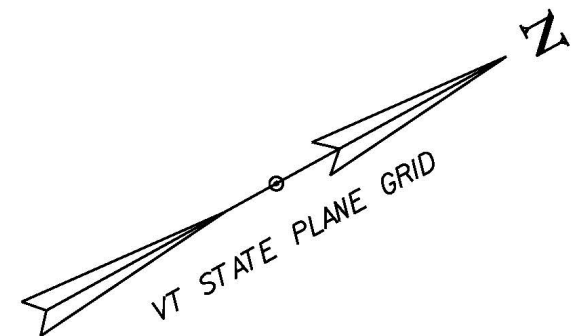
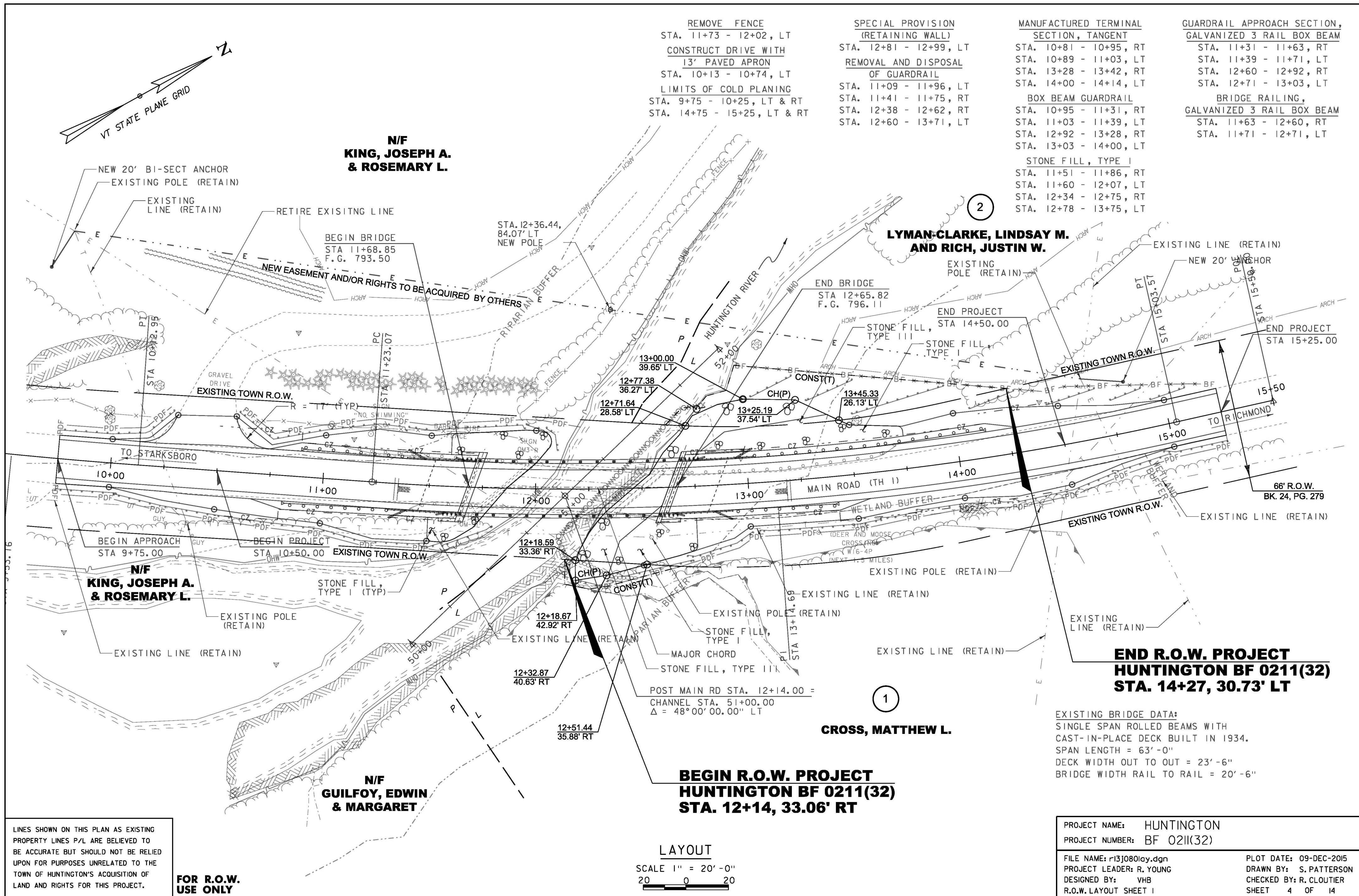
QUALITY ASSURANCE PROGRAM : LEVEL	
SURVEYED BY :	L. ORVIS
SURVEYED DATE :	06-17-2013
DATUM	
VERTICAL	NAVD88
HORIZONTAL	NAD 83 (2011)

SCALE 1" = 40' - 0"

CHIEF OF RIGHT OF WAY	
APPROVED	ROBERT M. WHITE DATE 11-23-15
PROJECT MANAGER :	ROBERT YOUNG, P. E.
PROJECT NAME :	HUNTINGTON
PROJECT NUMBER :	BF 0211 (32)
SHEET	1 OF 14 SHEETS

ALL DRIVES AS INDICATED ON PLANS ARE SUBJECT TO PERMITS PURSUANT TO TITLE 19 V.S.A. § 1111.

Original Drawing - Ink on Polymer meeting the requirements of 27 V.S.A. § 1403



REMOVE FENCE
 STA. 11+73 - 12+02, LT
 CONSTRUCT DRIVE WITH
 13' PAVED APRON
 STA. 10+13 - 10+74, LT
 LIMITS OF COLD PLANING
 STA. 9+75 - 10+25, LT & RT
 STA. 14+75 - 15+25, LT & RT

SPECIAL PROVISION
 (RETAINING WALL)
 STA. 12+81 - 12+99, LT
 REMOVAL AND DISPOSAL
 OF GUARDRAIL
 STA. 11+09 - 11+96, LT
 STA. 11+41 - 11+75, RT
 STA. 12+38 - 12+62, RT
 STA. 12+60 - 13+71, LT

MANUFACTURED TERMINAL
 SECTION, TANGENT
 STA. 10+81 - 10+95, RT
 STA. 10+89 - 11+03, LT
 STA. 13+28 - 13+42, RT
 STA. 14+00 - 14+14, LT
 BOX BEAM GUARDRAIL
 STA. 10+95 - 11+31, RT
 STA. 11+03 - 11+39, LT
 STA. 12+92 - 13+28, RT
 STA. 13+03 - 14+00, LT
 STONE FILL, TYPE I
 STA. 11+51 - 11+86, RT
 STA. 11+60 - 12+07, LT
 STA. 12+34 - 12+75, RT
 STA. 12+78 - 13+75, LT

GUARDRAIL APPROACH SECTION,
 GALVANIZED 3 RAIL BOX BEAM
 STA. 11+31 - 11+63, RT
 STA. 11+39 - 11+71, LT
 STA. 12+60 - 12+92, RT
 STA. 12+71 - 13+03, LT
 BRIDGE RAILING,
 GALVANIZED 3 RAIL BOX BEAM
 STA. 11+63 - 12+60, RT
 STA. 11+71 - 12+71, LT

**N/F
 KING, JOSEPH A.
 & ROSEMARY L.**

**LYMAN-CLARKE, LINDSAY M.
 AND RICH, JUSTIN W.**

**N/F
 KING, JOSEPH A.
 & ROSEMARY L.**

**N/F
 GUILFOY, EDWIN
 & MARGARET**

CROSS, MATTHEW L.

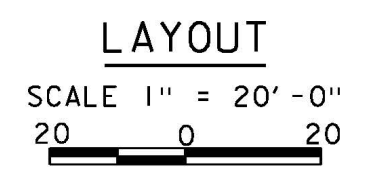
**BEGIN R.O.W. PROJECT
 HUNTINGTON BF 0211(32)
 STA. 12+14, 33.06' RT**

**END R.O.W. PROJECT
 HUNTINGTON BF 0211(32)
 STA. 14+27, 30.73' LT**

EXISTING BRIDGE DATA:
 SINGLE SPAN ROLLED BEAMS WITH
 CAST-IN-PLACE DECK BUILT IN 1934.
 SPAN LENGTH = 63'-0"
 DECK WIDTH OUT TO OUT = 23'-6"
 BRIDGE WIDTH RAIL TO RAIL = 20'-6"

LINES SHOWN ON THIS PLAN AS EXISTING
 PROPERTY LINES P/L ARE BELIEVED TO
 BE ACCURATE BUT SHOULD NOT BE RELIED
 UPON FOR PURPOSES UNRELATED TO THE
 TOWN OF HUNTINGTON'S ACQUISITION OF
 LAND AND RIGHTS FOR THIS PROJECT.

**FOR R.O.W.
 USE ONLY**



PROJECT NAME: HUNTINGTON	FILE NAME: r13j080lay.dgn	PLOT DATE: 09-DEC-2015
PROJECT NUMBER: BF 0211(32)	PROJECT LEADER: R. YOUNG	DRAWN BY: S. PATTERSON
	DESIGNED BY: VHB	CHECKED BY: R. CLOUTIER
	R.O.W. LAYOUT SHEET 1	SHEET 4 OF 14

GPS CONTROL POINTS

SHAKE AZ MK
 NORTH = 650571.420
 EAST = 1518446.317
 ELEV. = 710.960

SHAKE AZ MK
 TO REACH FROM THE INTERSECTION OF VT ROUTE 116 AND HINESBURG HOLLOW ROAD IN SOUTH HUNTINGTON, GO EAST ALONG HINESBURG HOLLOW ROAD FOR 5.0MI TO THE T-INTERSECTION OF MAIN ROAD (HUNTINGTON ROAD). TURN RIGHT AND GO SOUTH ALONG MAIN ROAD FOR 2.7MI TO THE SITE OF THE MARK ON THE LEFT ABOUT 40 M (131.2 FT) SOUTH OF HOUSE NO 5726.

THE MARK IS SET 20 CM (8 INCHES) BELOW GROUND SURFACE IN THE TOP OF A FENO STYLE MONUMENT.

IT IS 5.9 M (19.4 FT) EAST OF AND ABOUT 0.3 M (1.0 FT) LOWER THAN THE CENTERLINE OF MAIN ROAD, 13.3 M (43.6 FT) EAST OF AND ACROSS THE ROAD FROM POLE NO 33/119A AND 72.1 M (236.5 FT) SOUTH OF TELEPHONE JUNCTION BOX NO 5/50.

SHAKE
 NORTH = 651682.260
 EAST = 1518644.275
 ELEV. = 709.745

SHAKE
 TO REACH FROM THE INTERSECTION OF VT ROUTE 116 AND HINESBURG HOLLOW ROAD IN SOUTH HUNTINGTON, GO EAST ALONG HINESBURG HOLLOW ROAD FOR 5.0MI TO THE T-INTERSECTION OF MAIN ROAD (HUNTINGTON ROAD). TURN RIGHT AND GO SOUTH ALONG MAIN ROAD FOR 2.5MI TO THE SITE OF THE MARK ON THE RIGHT ABOUT 35 M (114.8 FT) NORTHEAST OF THE INTERSECTION OF SHAKER MOUNTAIN ROAD RIGHT.

THE MARK IS SET 20 CM (8 INCHES) BELOW GROUND SURFACE IN THE TOP OF A FENO STYLE MONUMENT.

IT IS 5.3 M (17.4 FT) NORTHWEST OF AND ABOUT 5 CM (2 INCHES) LOWER THAN THE CENTERLINE OF MAIN ROAD, 20.7 M (67.9 FT) NORTHEAST OF POLE NO 48/00, 1.4 M (4.6 FT) NORTHWEST OF THE NORTHWEST EDGE OF PAVEMENT OF MAIN ROAD AND 42.0 M (137.8 FT) NORTHEAST OF THE EAST END OF A BRIDGE CURB.

SHELDRAKE
 NORTH=644259.00
 EAST 1520182.804
 ELEV: 815.258

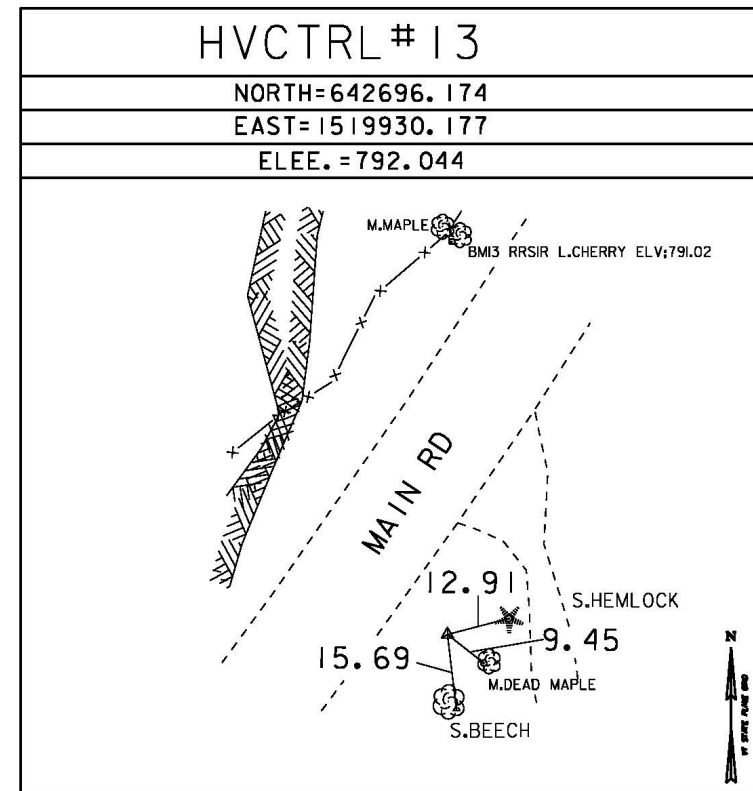
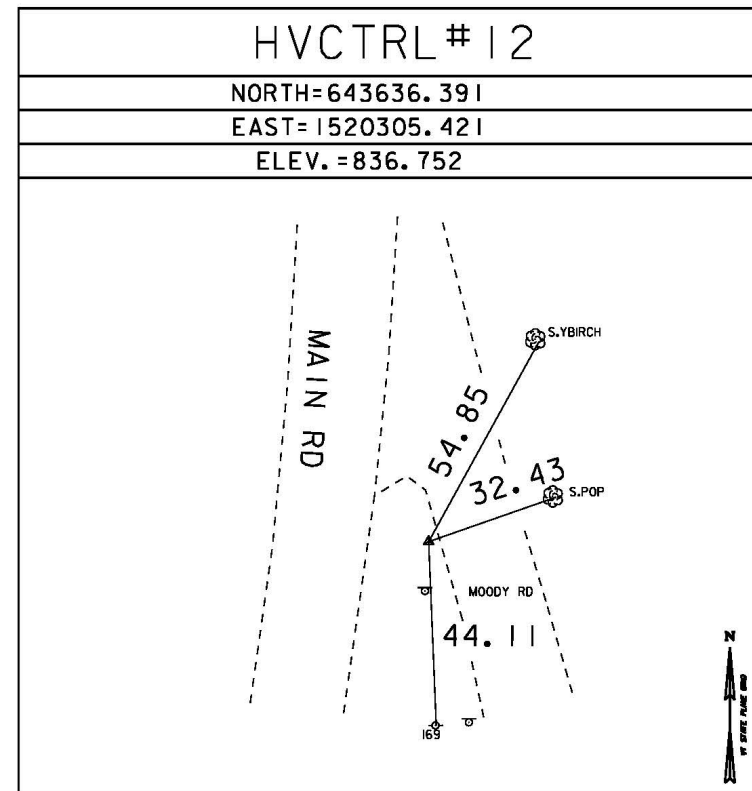
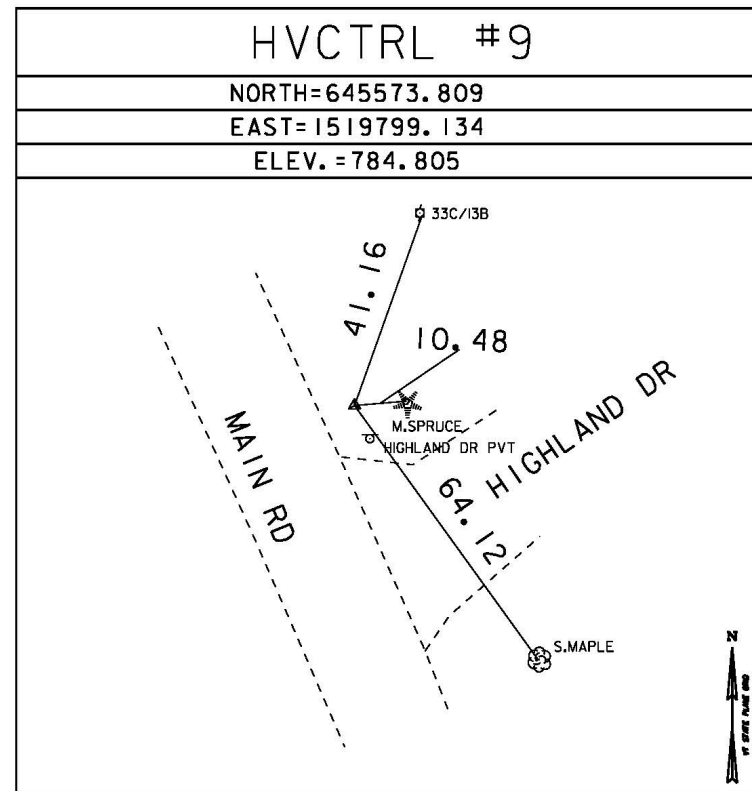
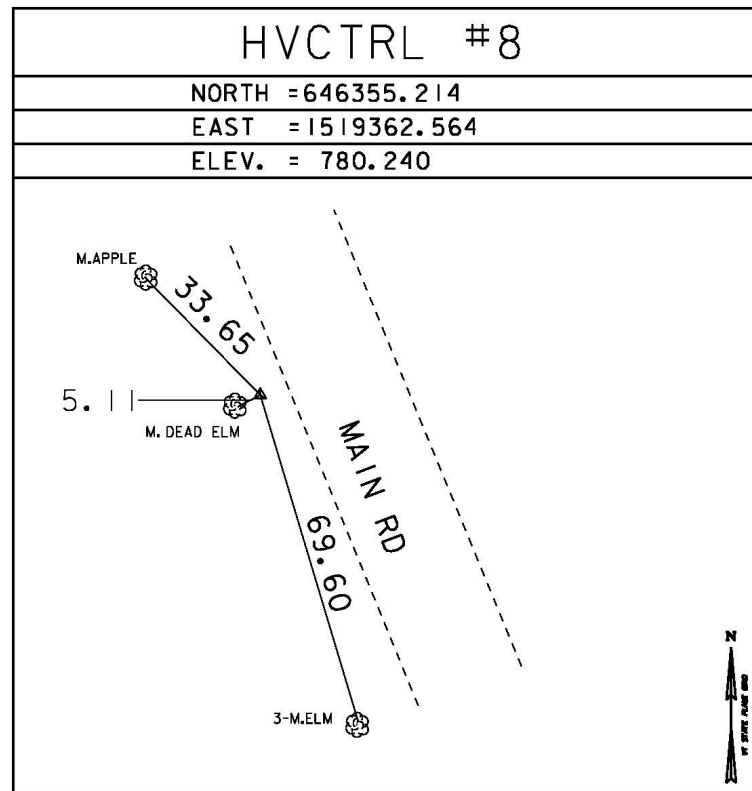
TO REACH FROM THE INTERSECTION OF US ROUTE 2 AND VT ROUTE 100 NORTH IN WATERBURY, GO WEST ALONG US ROUTE 2 FOR 9.6 MI (15.4 KM) TO THE INTERSECTION OF STAGE ROAD RIGHT AND COCHRAN PAVED ROAD LEFT, IN JONESVILLE. TURN LEFT, IMMEDIATELY CROSSING THE NEW ENGLAND CENTRAL RAILROAD AND THE COCHRAN ROAD BRIDGE OVER THE WINDOSKI RIVER AND GO SOUTH AND WEST ALONG COCHRAN ROAD FOR 0.45 MI (0.7 KM) TO THE Y-INTERSECTION OF THE ROAD TO HUNTINGTON GORGE (DUGWAY ROAD) LEFT AND COCHRAN ROAD RIGHT. BEAR LEFT AND GO SOUTHWEST ALONG DUGWAY ROAD FOR 3.2 MI (5.1 KM) TO THE INTERSECTION OF HUNTINGTON MAIN ROAD. BEAR LEFT AND GO SOUTH ALONG HUNTINGTON MAIN ROAD FOR 5.4 MI (8.7 KM) TO THE INTERSECTION OF CAMELS HUMP ROAD LEFT, IN HUNTINGTON CENTER. CONTINUE STRAIGHT AHEAD AND GO SOUTH ALONG HUNTINGTON MAIN ROAD FOR 2.2 MI (3.5 KM) TO THE SITE OF THE MARK ON THE RIGHT. IT IS JUST SOUTH OF THE SHELDRAKE ONE AND ONE-HALF STORY HOUSE AND BARN.

THE MARK IS SET FLUSH WITH THE GROUND SURFACE IN THE TOP OF A FENO STYLE MONUMENT.

IT IS 5.7 M (18.7 FT) WEST OF AND ABOUT 0.2 M (0.7 FT) LOWER THAN THE CENTERLINE OF HUNTINGTON MAIN ROAD, 29.2 M (95.8 FT) NORTHEAST OF THE NORTHEAST CORNER OF THE HOUSE, 39.9 M (130.9 FT) NORTHWEST OF POLE NO 167, 51.4 M (168.6 FT) SOUTH-SOUTHWEST OF POLE NO CTC 5/166 AND 0.6 M (2.0 FT) EAST OF A FIBERGLASS WITNESS POST.

GPS CONTROL SET BY VTRANS GSU JUNE 6,2013

TRAVERSE TIES



NORTH =
EAST =
ELEV. =

TRAVERSE COMPLETED BY L. ORVIS PC/H. MCGOWAN JUNE 17, 2013

ALIGNMENT TIES

NORTH =
EAST =
ELEV. =

NORTH =
EAST =
ELEV. =

NORTH =
EAST =
ELEV. =

NORTH =
EAST =
ELEV. =

NORTH =
EAST =
ELEV. =

DATUM	
VERTICAL	NAVD 88
HORIZONTAL	NAD 83 (2011)
ADJUSTMENT	COMPASS

PROJECT NAME:	HUNTINGTON
PROJECT NUMBER:	BF 0211(32)
FILE NAME:	r13j080+1e.dgn
PROJECT LEADER:	R. YOUNG
DESIGNED BY:	VHB
TIE SHEET	
PLOT DATE:	23-NOV-2015
DRAWN BY:	VHB
CHECKED BY:	VHB
SHEET	9 OF 14