

GPS CONTROL POINTS

SHAKE AZ MK
 NORTH = 650571.420
 EAST = 1518446.317
 ELEV. = 710.960

SHAKE AZ MK
 TO REACH FROM THE INTERSECTION OF VT ROUTE 116 AND HINESBURG HOLLOW ROAD IN SOUTH HUNTINGTON, GO EAST ALONG HINESBURG HOLLOW ROAD FOR 5.0MI TO THE T-INTERSECTION OF MAIN ROAD (HUNTINGTON ROAD). TURN RIGHT AND GO SOUTH ALONG MAIN ROAD FOR 2.7MI TO THE SITE OF THE MARK ON THE LEFT ABOUT 40 M (131.2 FT) SOUTH OF HOUSE NO 5726.

THE MARK IS SET 20 CM (8 INCHES) BELOW GROUND SURFACE IN THE TOP OF A FENO STYLE MONUMENT.

IT IS 5.9 M (19.4 FT) EAST OF AND ABOUT 0.3 M (1.0 FT) LOWER THAN THE CENTERLINE OF MAIN ROAD, 13.3 M (43.6 FT) EAST OF AND ACROSS THE ROAD FROM POLE NO 33/119A AND 72.1 M (236.5 FT) SOUTH OF TELEPHONE JUNCTION BOX NO 5/50.

SHAKE
 NORTH = 651682.260
 EAST = 1518644.275
 ELEV. = 709.745

SHAKE
 TO REACH FROM THE INTERSECTION OF VT ROUTE 116 AND HINESBURG HOLLOW ROAD IN SOUTH HUNTINGTON, GO EAST ALONG HINESBURG HOLLOW ROAD FOR 5.0MI TO THE T-INTERSECTION OF MAIN ROAD (HUNTINGTON ROAD). TURN RIGHT AND GO SOUTH ALONG MAIN ROAD FOR 2.5MI TO THE SITE OF THE MARK ON THE RIGHT ABOUT 35 M (114.8 FT) NORTHEAST OF THE INTERSECTION OF SHAKER MOUNTAIN ROAD RIGHT.

THE MARK IS SET 20 CM (8 INCHES) BELOW GROUND SURFACE IN THE TOP OF A FENO STYLE MONUMENT.

IT IS 5.3 M (17.4 FT) NORTHWEST OF AND ABOUT 5 CM (2 INCHES) LOWER THAN THE CENTERLINE OF MAIN ROAD, 20.7 M (67.9 FT) NORTHEAST OF POLE NO 48/00, 1.4 M (4.6 FT) NORTHWEST OF THE NORTHWEST EDGE OF PAVEMENT OF MAIN ROAD AND 42.0 M (137.8 FT) NORTHEAST OF THE EAST END OF A BRIDGE CURB.

SHELDRAKE
 NORTH=644259.00
 EAST 1520182.804
 ELEV: 815.258

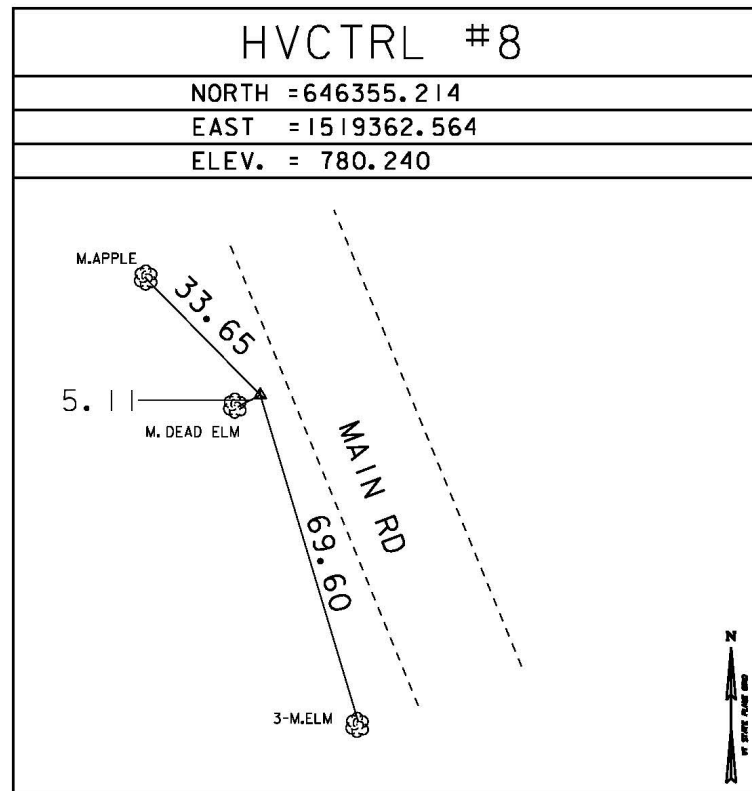
TO REACH FROM THE INTERSECTION OF US ROUTE 2 AND VT ROUTE 100 NORTH IN WATERBURY, GO WEST ALONG US ROUTE 2 FOR 9.6 MI (15.4 KM) TO THE INTERSECTION OF STAGE ROAD RIGHT AND COCHRAN PAVED ROAD LEFT, IN JONESVILLE. TURN LEFT, IMMEDIATELY CROSSING THE NEW ENGLAND CENTRAL RAILROAD AND THE COCHRAN ROAD BRIDGE OVER THE WINOOSKI RIVER AND GO SOUTH AND WEST ALONG COCHRAN ROAD FOR 0.45 MI (0.7 KM) TO THE Y-INTERSECTION OF THE ROAD TO HUNTINGTON GORGE (DUGWAY ROAD) LEFT AND COCHRAN ROAD RIGHT. BEAR LEFT AND GO SOUTHWEST ALONG DUGWAY ROAD FOR 3.2 MI (5.1 KM) TO THE INTERSECTION OF HUNTINGTON MAIN ROAD. BEAR LEFT AND GO SOUTH ALONG HUNTINGTON MAIN ROAD FOR 5.4 MI (8.7 KM) TO THE INTERSECTION OF CAMELS HUMP ROAD LEFT, IN HUNTINGTON CENTER. CONTINUE STRAIGHT AHEAD AND GO SOUTH ALONG HUNTINGTON MAIN ROAD FOR 2.2 MI (3.5 KM) TO THE SITE OF THE MARK ON THE RIGHT. IT IS JUST SOUTH OF THE SHELDRAKE ONE AND ONE-HALF STORY HOUSE AND BARN.

THE MARK IS SET FLUSH WITH THE GROUND SURFACE IN THE TOP OF A FENO STYLE MONUMENT.

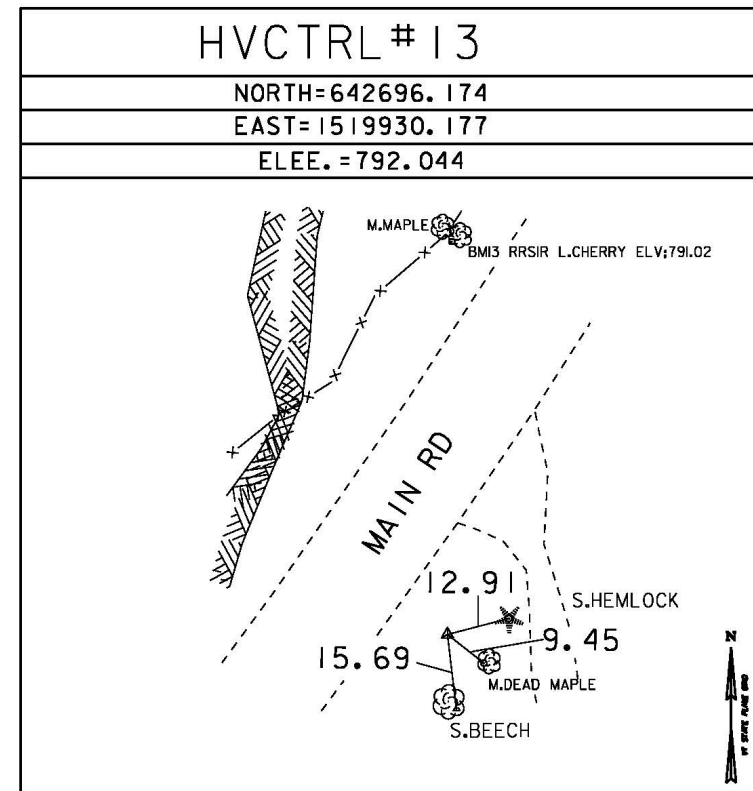
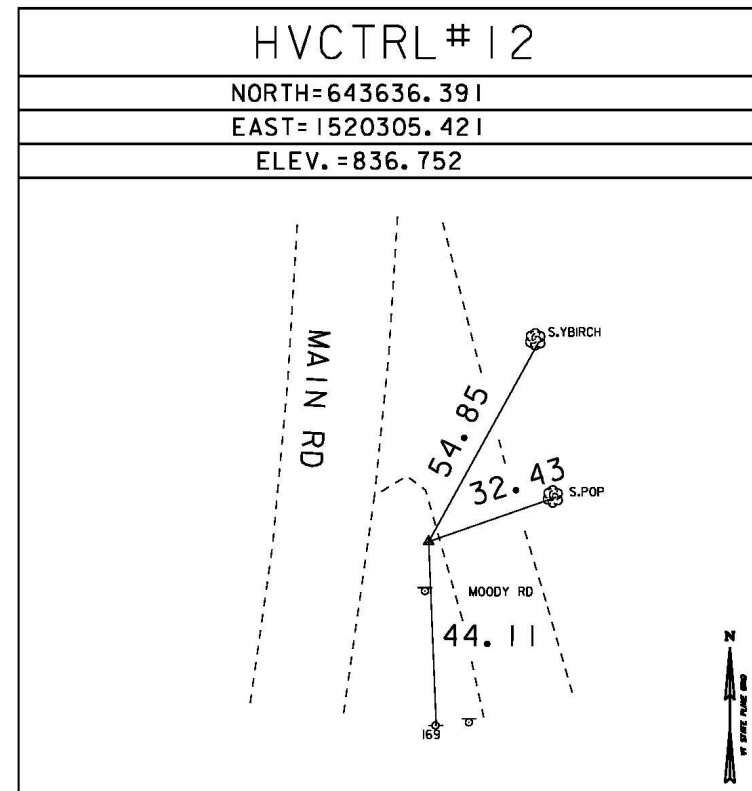
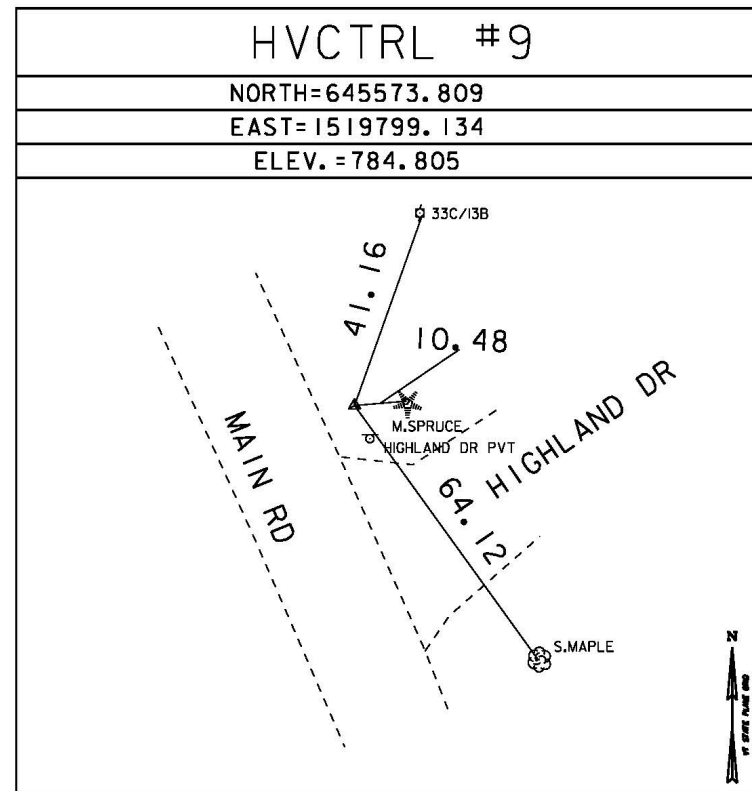
IT IS 5.7 M (18.7 FT) WEST OF AND ABOUT 0.2 M (0.7 FT) LOWER THAN THE CENTERLINE OF HUNTINGTON MAIN ROAD, 29.2 M (95.8 FT) NORTHEAST OF THE NORTHEAST CORNER OF THE HOUSE, 39.9 M (130.9 FT) NORTHWEST OF POLE NO 167, 51.4 M (168.6 FT) SOUTH-SOUTHWEST OF POLE NO CTC 5/166 AND 0.6 M (2.0 FT) EAST OF A FIBERGLASS WITNESS POST.

GPS CONTROL SET BY VTRANS GSU JUNE 6,2013

TRAVERSE TIES



TRAVERSE COMPLETED BY L. ORVIS PC/H. MCGOWAN JUNE 17,2013



NORTH =
EAST =
ELEV. =

ALIGNMENT TIES

NORTH =
EAST =
ELEV. =

NORTH =
EAST =
ELEV. =

NORTH =
EAST =
ELEV. =

NORTH =
EAST =
ELEV. =

NORTH =
EAST =
ELEV. =

DATUM	
VERTICAL	NAVD 88
HORIZONTAL	NAD 83 (2011)
ADJUSTMENT	COMPASS

PROJECT NAME:	HUNTINGTON
PROJECT NUMBER:	BF 0211(32)
FILE NAME:	r13j080+1e.dgn
PROJECT LEADER:	R. YOUNG
DESIGNED BY:	VHB
TIE SHEET	
PLOT DATE:	23-NOV-2015
DRAWN BY:	VHB
CHECKED BY:	VHB
SHEET	9 OF 14