

INDEX OF SHEETS

1	TITLE SHEET
2	TYPICAL CROSS SECTION OF IMPROVEMENT (1/2" x 3/4" BITUMINOUS CONCRETE)
3	QUANTITY SHEET (TOTAL)
4	QUANTITY SHEET (DRAINAGE)
5-6	EARTHWORK SHEETS
7	STANDARD SHEET B-1 (DRAINAGE TABLES)
8	STANDARD SHEET B-5 (TYPICAL SLOPE GRADINGS)
9	STANDARD SHEET B-6 (MUCK EXCAVATION)
10	STANDARD SHEET B-16 (DIVISIONAL ISLAND)
11	STANDARD SHEET C-1 (CURBS, BITUMINOUS CONCRETE SIDEWALK)
12	STANDARD SHEET D-2 (CONCRETE WALLS & UNDERDRAINS)
13	STANDARD SHEET D-3 (TREATED BATTERS)
14	STANDARD SHEET D-8 (REINFORCED CONCRETE GROP INLET)
15	STANDARD SHEET D-9 (GROPS WITH GRANITE CURB)
16	STANDARD SHEET D-10 (GROPS WITH GRANITE SLOPE EDGING)
17	STANDARD SHEET D-11 (GROP INLET GRATES)
18	STANDARD SHEET E-1 (SIGNAGE, SIGNS, & LIGHTS)
19	STANDARD SHEET E-9 (FEDERAL-AID CONSTRUCTION IDENTIFICATION SIGN)
20	STANDARD SHEET G-3 (THREE CABLE GUARD RAIL)
21	STANDARD SHEET G-4 (STEEL MARKER POST)
22	STANDARD SHEET J-1 (PROJECT & BOUNDARY MARKERS)
23	STANDARD SHEET SCB-30-60
24	STANDARD SHEET SCB-D-60
25	STANDARD SHEET SB-50-60
26	STANDARD SHEET SB-20-60
27	STANDARD SHEET SB-22-60
28-39	DETAILS OF BRIDGE @ STA. 186+92.50
40-41	DETAILS OF 9'6" x 6'6" x 110' 0" GCMPPA @ STA. 208+50
42-47	PLAN & PROFILE SHEETS
48-63	CROSS SECTION SHEETS
64	CURVE BANKING TRANSITION DIAGRAMS

STATE OF VERMONT
DEPARTMENT OF HIGHWAYS
PROPOSED IMPROVEMENT

TOWN OF SOUTH BURLINGTON
COUNTY OF CHITTENDEN
SHELBURNE-SO. BURLINGTON ROAD

FEDERAL AID URBAN PROJECT
BEGINNING AT THE JUNCTION OF INTERSTATE ROUTES 1-89 AND I-89 AND EXTENDING SOUTHEASTERLY 4,410.85 FEET.

LENGTH OF ROADWAY = 4243.85 FEET 0.804 MILES
LENGTH OF BRIDGE = 16700 FEET 0.032 MILES
LENGTH OF PROJECT = 4410.85 FEET 0.836 MILES

1980 ADT INTERCHANGE TO DORSET ST. = 930
1980 ADT (DORSET ST TO RTE 118) = 925
1980 DHV = 110
V = 50 MPH
D = 64 %
T = 5 %

PROJECT NAME & NUMBER TYPE PAVMT. AREA.
SO. BURLINGTON U 528-2(2) BIT. CONC. 22,910 S.Y.
RECORD PLANS
MATERIALS

SUBBASE OF GRAVEL - CASEY PIT - HINESBURG, VT.
SUBBASE OF SAND - S.T. GRISWOLD PIT - WILLISTON, VT.
SUBBASE OF CRUSHED ROCK & PENETRATION MACADAM
CRUSHED STONE BASE COURSE - LANE QUARRY - WILLISTON, VT.
ASPHALT - HUMBLE OIL & REFINING CO. - EVERETT, MASS.
BITUMINOUS CONCRETE - L.M. PIKE & SON INC. (PLANT) - WILLISTON, VT.
CONCRETE CLASS "B" - THREE CABLE GUARD RAIL, STEEL MARKER POSTS, PROJECT & BOUNDARY MARKERS - S.T. GRISWOLD & CO. INC. - WILLISTON, VT.
REINFORCING & STRUCTURAL STEEL - VERMONT STRUCTURAL STEEL CORP. - BURLINGTON, VT.
REINFORCED CONCRETE PIPE - CASS-WARNER CORP. - ESSEX JUNCTION, VT.
ACC.G. METAL PIPE - NEW ENGLAND METAL PIPE CO. - WHITE RIVER JCT., VT.
SEEDS, COMMERCIAL FERTILIZER & MULCH - A.J. CAMERON LANDSCAPING SERVICE, INC. - FARMINGTON, N.H.

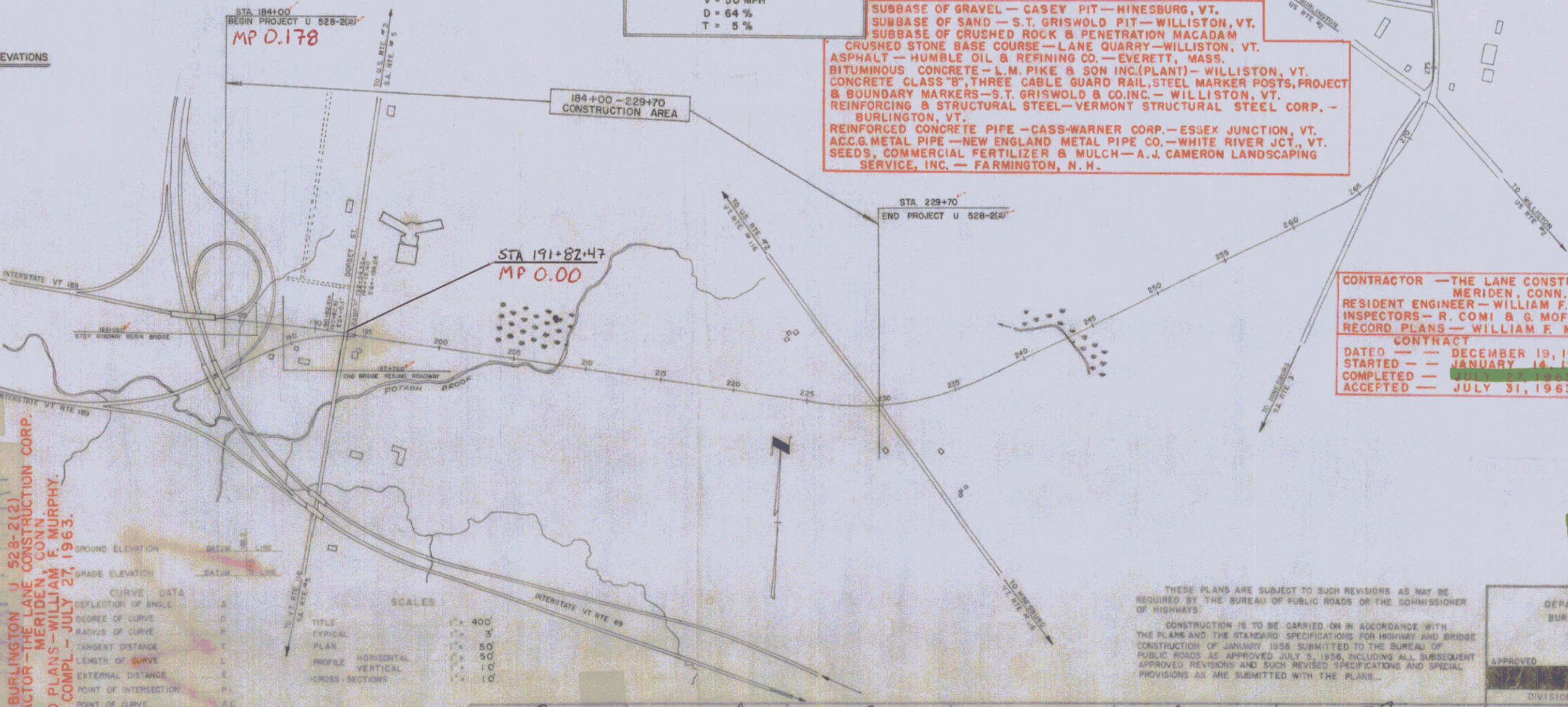
CONTRACTOR - THE LANE CONSTRUCTION CORP.
MERIDEN, CONN.
RESIDENT ENGINEER - WILLIAM F. MURPHY.
INSPECTORS - R. COMI & G. MOFFATT.
RECORD PLANS - WILLIAM F. MURPHY.
CONTRACT
DATED - DECEMBER 19, 1961.
STARTED - JANUARY 14, 1962.
COMPLETED - JULY 31, 1963.
ACCEPTED - JULY 31, 1963.

BENCH MARK DATA FROM USGS ELEVATIONS

RIGHT OF WAY
SLOPE
TOP
SIDEWALK
STONE
UNIFORM
GUARD
RAIL
CENTER
SURVEY
CROWN
DRAIN
TRENCH
POWER
TELEPHONE
TREE
MEDIAN

SOUTH BURLINGTON
PROJECT U 528-2(2) SA
BITUMINOUS CONCRETE PAVEMENT
THE LANE CONSTRUCTION CORP.
MERIDEN, CONN.
3317 BOX 186
U 528-2(2)
CONTRACTOR - THE LANE CONSTRUCTION CORP.
RESIDENT ENGINEER - WILLIAM F. MURPHY.
INSPECTORS - R. COMI & G. MOFFATT.
RECORD PLANS - WILLIAM F. MURPHY.
CONST. COMPLETED - JULY 27, 1963.

Location: Beginning of Interstate Routes 1-89 and I-89 and extending southeasterly 4,410.85 feet.

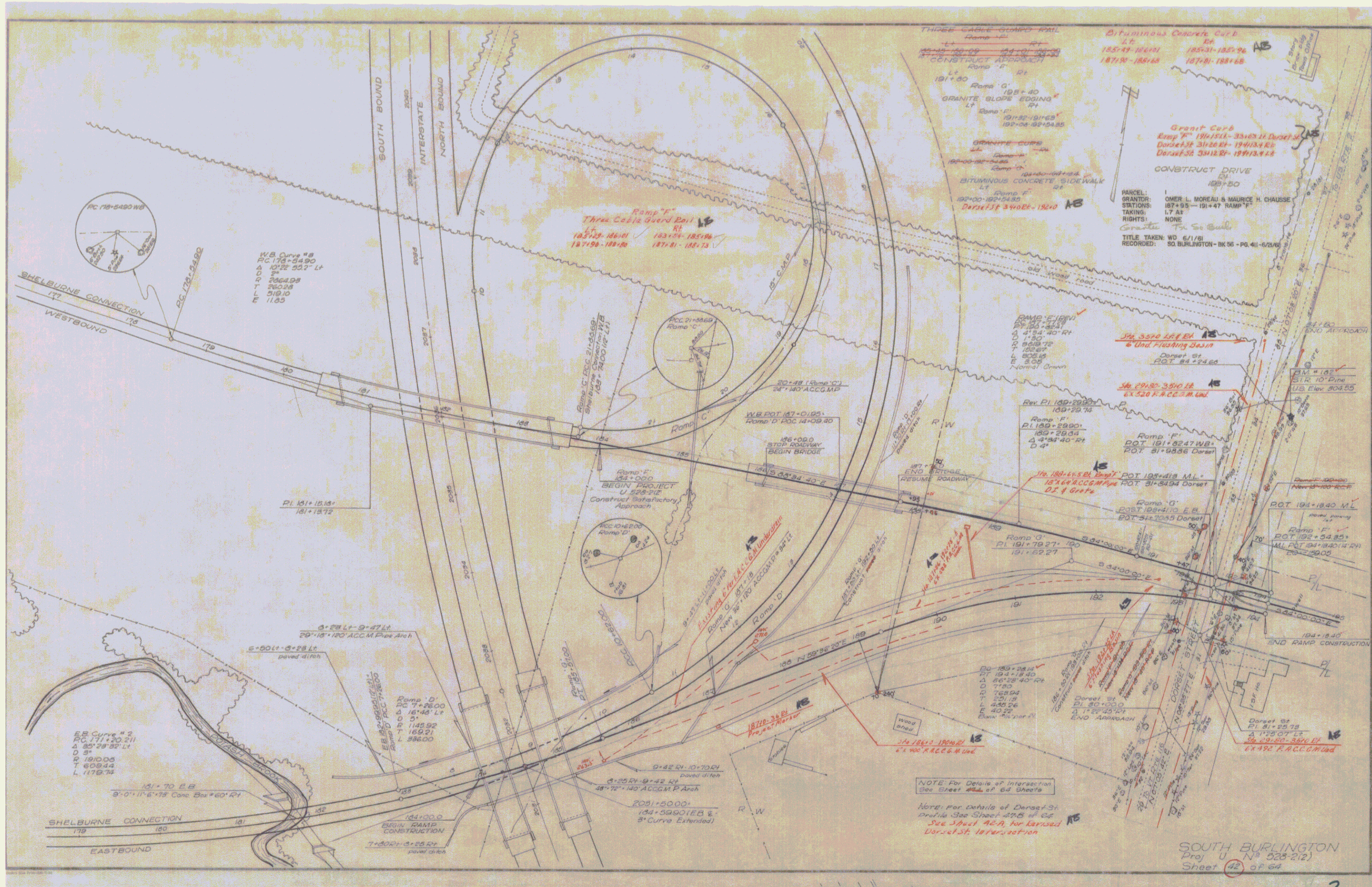


THESE PLANS ARE SUBJECT TO SUCH REVISIONS AS MAY BE REQUIRED BY THE BUREAU OF PUBLIC ROADS OR THE COMMISSIONER OF HIGHWAYS.
CONSTRUCTION IS TO BE CARRIED ON IN ACCORDANCE WITH THE PLANS AND THE STANDARD SPECIFICATIONS FOR HIGHWAY AND BRIDGE CONSTRUCTION OF JANUARY 1956 SUBMITTED TO THE BUREAU OF PUBLIC ROADS AS APPROVED JULY 3, 1956, INCLUDING ALL SUBSEQUENT APPROVED REVISIONS AND SUCH REVISED SPECIFICATIONS AND SPECIAL PROVISIONS AS ARE SUBMITTED WITH THE PLANS.

Pin # 13R379
Route 189 R-E

APPROVED: *[Signature]* DATE: Nov. 9, 1961
APPROVED: *[Signature]* DATE: Nov. 9, 1961
APPROVED: *[Signature]* DATE: Nov. 13, 1961
APPROVED: *[Signature]* DATE: Nov. 9, 1961
APPROVED: *[Signature]* DATE: Nov. 9, 1961
APPROVED: *[Signature]* DATE: Nov. 10, 1961

DEPARTMENT OF COMMERCE BUREAU OF PUBLIC ROADS	
APPROVED	DATE
DIVISION ENGINEER	
SHEET 1 OF 64 SHEETS	



SOUTH BURLINGTON
 Proj U N 925-212
 Sheet 42 of 64