

INDEX OF SHEETS

STATE OF VERMONT DEPARTMENT OF HIGHWAYS



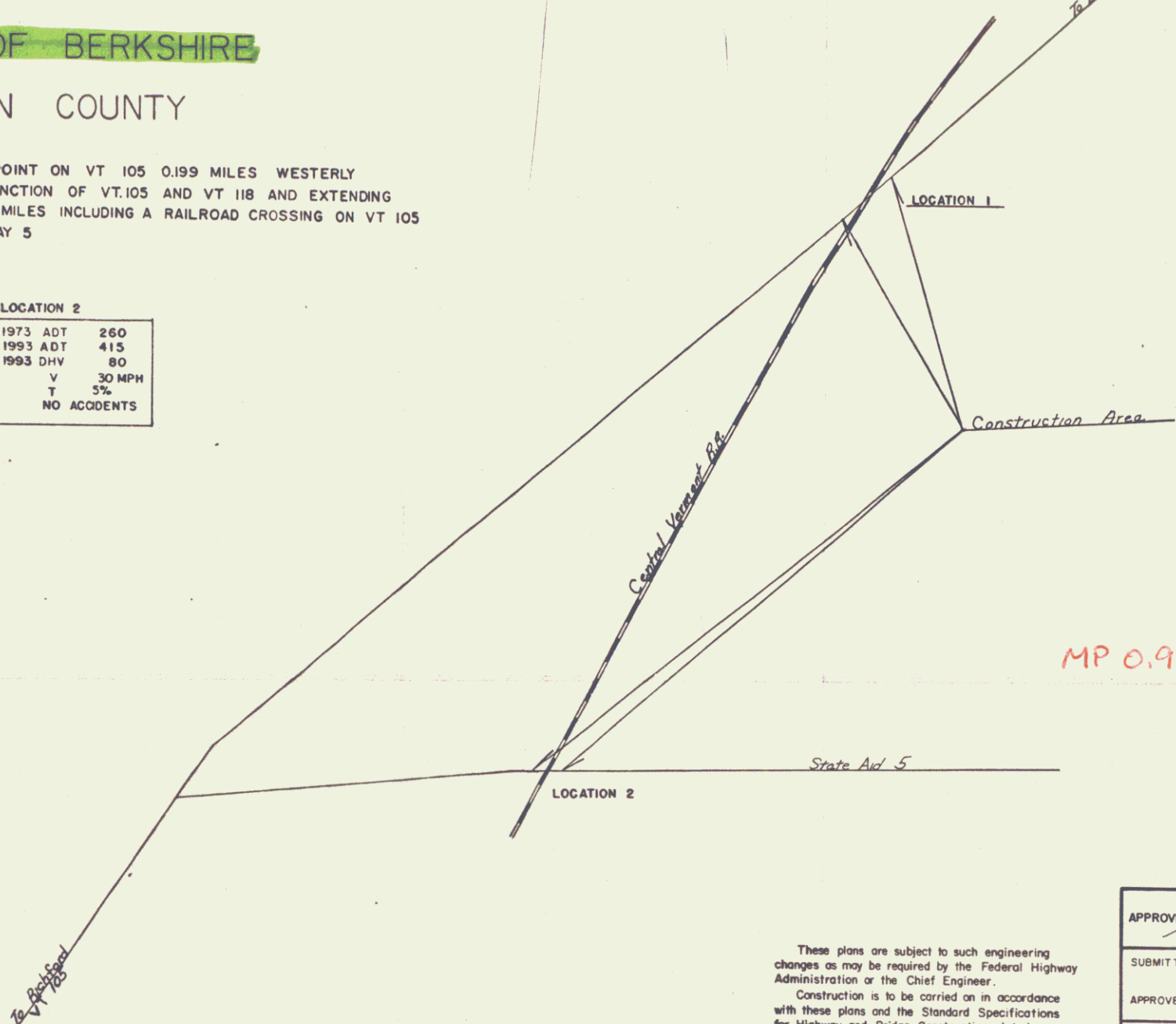
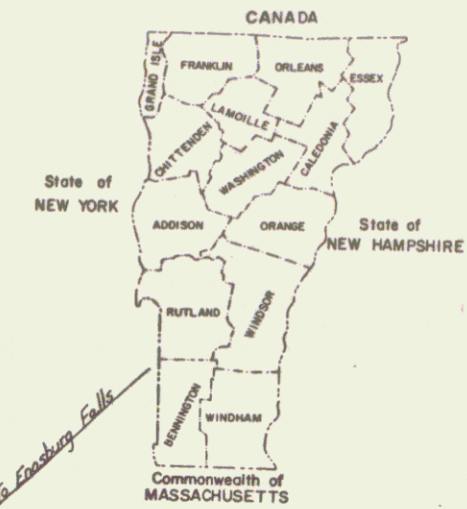
PROPOSED IMPROVEMENT

TOWN OF BERKSHIRE

FRANKLIN COUNTY

BEGINNING AT A POINT ON VT 105 0.199 MILES WESTERLY OF THE ROAD JUNCTION OF VT.105 AND VT 118 AND EXTENDING WESTERLY 0.004 MILES INCLUDING A RAILROAD CROSSING ON VT 105 AND TOWN HIGHWAY 5

LOCATION 1		LOCATION 2	
1973 ADT	2000	1973 ADT	260
1993 ADT	3180	1993 ADT	415
1993 DHV	440	1993 DHV	80
V	50 MPH	V	30 MPH
T	12%	T	5%
1 ACCIDENT 1959-72		NO ACCIDENTS	



MP 0.992-0.670

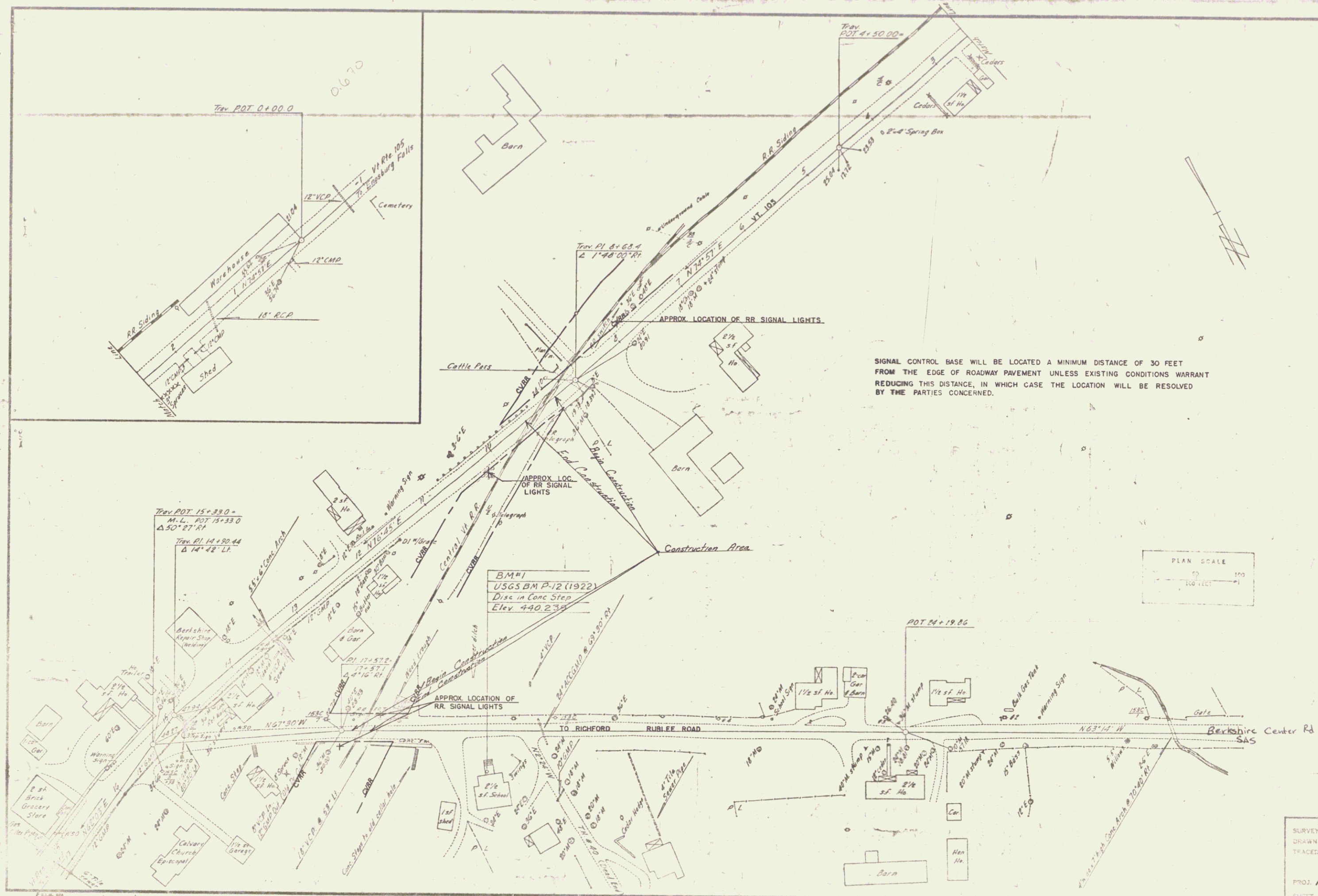
- CONVENTIONAL SIGNS
- COUNTY LINE ————
 - TOWN LINE ————
 - LIMITS OF ACCESS ————
 - POINT OF ACCESS — X
 - FENCE LINE ————
 - STONE WALL ————
 - TRAVELED WAY ————
 - GUARD RAIL ————
 - RAILROAD ————
 - SURVEY LINE ————
 - CULVERT ————
 - POWER POLE ————
 - TELEPHONE POLE ————
 - TREES ————
 - F.A. CONST IDENTIFICATION SIGNS ————
 - PROPERTY LINE ————
 - R.O.W TAKING LINE ————
 - SLOPE RIGHTS — SR ————
 - TOP OF CUT ————
 - TOE OF SLOPE ————

These plans are subject to such engineering changes as may be required by the Federal Highway Administration or the Chief Engineer. Construction is to be carried on in accordance with these plans and the Standard Specifications for Highway and Bridge Construction dated January 3, 1972 as approved by the Federal Highway Administration on December 28, 1971 for use on this project, including all subsequent revisions and such revised specification and special provisions as are incorporated in these plans.

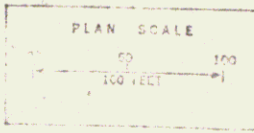
APPROVED *J.R. Jenkins* DATE 3-18-75
 ROW DIRECTOR
 SUBMITTED BY ORDER OF THE STATE HIGHWAY BOARD
 APPROVED *E.H. Steinhilber* DATE 3-18-75
 CHIEF ENGINEER
 DEPARTMENT OF TRANSPORTATION
 FEDERAL HIGHWAY ADMINISTRATION
 APPROVED _____ DATE _____
 DIVISION ENGINEER
 PROJECT RRS NO. 0005(3)
 SHEET 1 OF SHEETS

Pin# 13R248
Route VT105

15-14



SIGNAL CONTROL BASE WILL BE LOCATED A MINIMUM DISTANCE OF 30 FEET FROM THE EDGE OF ROADWAY PAVEMENT UNLESS EXISTING CONDITIONS WARRANT REDUCING THIS DISTANCE, IN WHICH CASE THE LOCATION WILL BE RESOLVED BY THE PARTIES CONCERNED.



SURVEYED BY: Stevens
 DRAWN BY: Stevens
 TRACED BY:
 BERKSHIRE
 PROJ. RRS NO. 0005(3)
 SHEET 2 OF 2