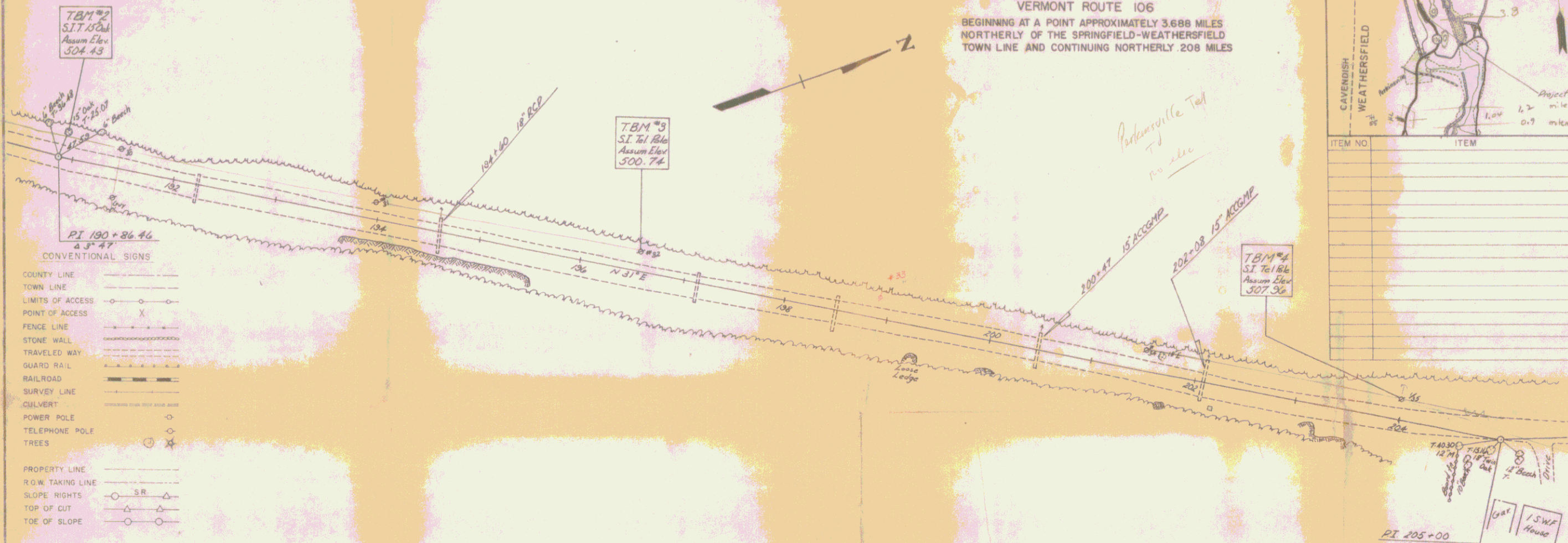
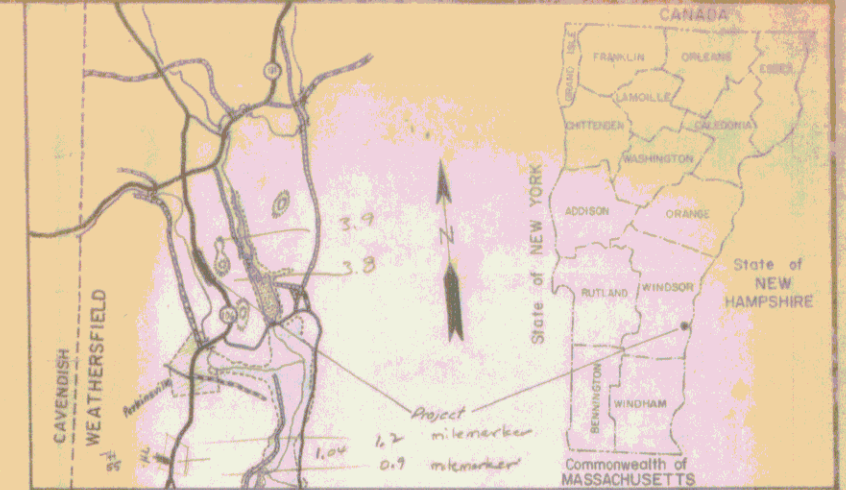


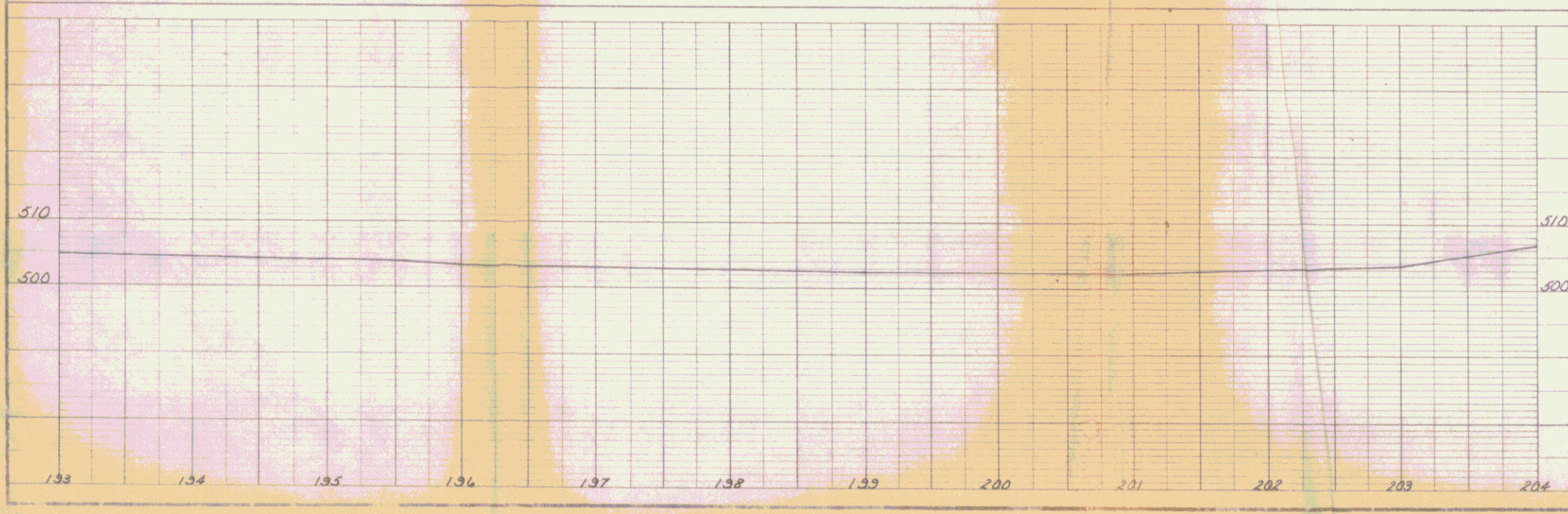
INDEX OF SHEETS

**TOWN OF WEATHERSFIELD  
COUNTY OF WINDSOR**

**VERMONT ROUTE 106**  
BEGINNING AT A POINT APPROXIMATELY 3.688 MILES  
NORTHERLY OF THE SPRINGFIELD-WEATHERSFIELD  
TOWN LINE AND CONTINUING NORTHERLY .208 MILES



- CONVENTIONAL SIGNS
- COUNTY LINE
  - TOWN LINE
  - LIMITS OF ACCESS
  - POINT OF ACCESS
  - FENCE LINE
  - STONE WALL
  - TRAVELED WAY
  - GUARD RAIL
  - RAILROAD
  - SURVEY LINE
  - CULVERT
  - POWER POLE
  - TELEPHONE POLE
  - TREES
  - PROPERTY LINE
  - R.O.W. TAKING LINE
  - SLOPE RIGHTS
  - TOP OF CUT
  - TOE OF SLOPE



ITEM NO.	ITEM	UNIT	NET	TOTAL	FINAL

FIELD CHECKED  
8/20/95 WGM

UTILITIES  
PARKVILLE SERV CORP  
PARKVILLE ELECTRIC NOW  
CIPSC  
YOUNG Community Television  
Corp. S.I. Young, Pres.

STATE OF VERMONT  
DEPARTMENT OF HIGHWAYS

TOWN OF WEATHERSFIELD RTE NO. VT. 106

BRIDGE NO. \_\_\_\_\_  
LOG STA. \_\_\_\_\_  
SURV STA. \_\_\_\_\_

DESIGNED BY \_\_\_\_\_ DATE \_\_\_\_\_  
DRAWN BY Burton DATE 3/75  
CHECKED BY \_\_\_\_\_ DATE \_\_\_\_\_  
Design Supervisor \_\_\_\_\_ DATE \_\_\_\_\_

PROJECT ROS PROJ NO 0181(3) 2533

SUBMITTED BY ORDER OF THE STATE HIGHWAY BOARD

APPROVED \_\_\_\_\_ CHIEF ENGINEER DATE \_\_\_\_\_

DEPARTMENT OF TRANSPORTATION  
FEDERAL HIGHWAY ADMINISTRATION

APPROVED \_\_\_\_\_ DIVISION ENGINEER DATE \_\_\_\_\_

SHEET **4A**