

INDEX OF SHEETS

STATE OF VERMONT DEPARTMENT OF HIGHWAYS



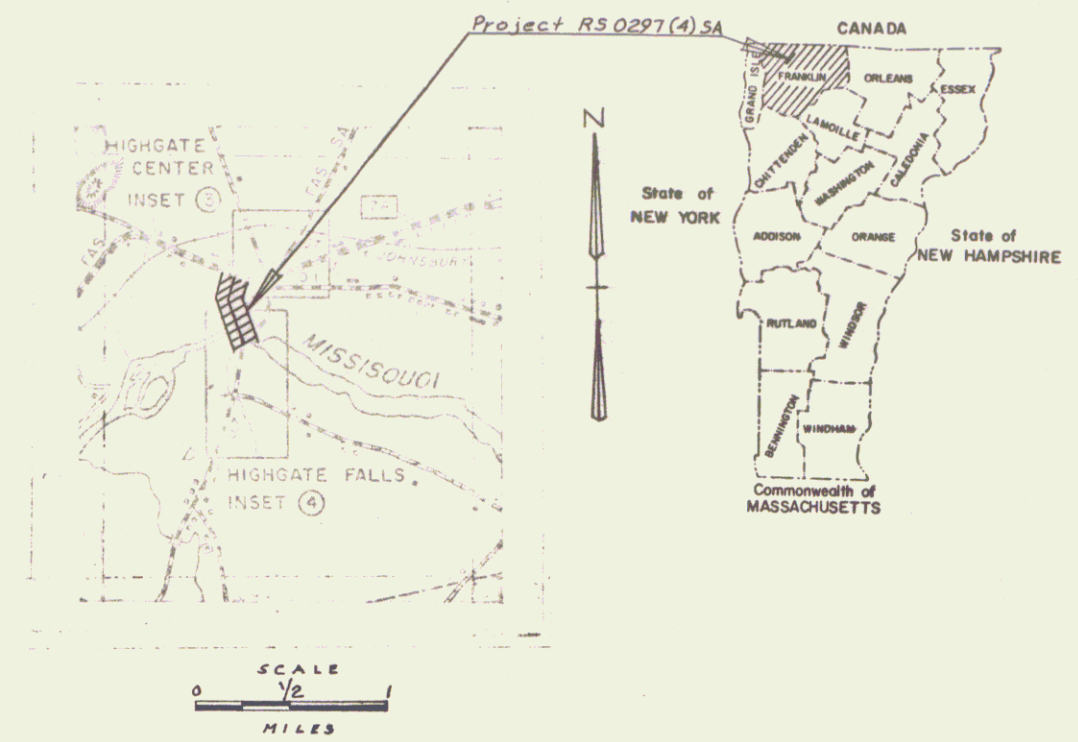
PROPOSED IMPROVEMENT TOWN OF HIGHGATE COUNTY OF FRANKLIN STATE AID ROUTE 2

BEGINNING AT A POINT ON SA ROUTE 2 APPROXIMATELY 293'
SOUTH OF THE MISSISQUOI RIVER BRIDGE TO A POINT ON
VT ROUTE 78 1000' WEST OF THE INTERSECTION OF VT 78
AND SA 2

LENGTH OF ROADWAY FEET= MILES
LENGTH OF BRIDGE FEET= MILES
LENGTH OF PROJECT 2058 FEET= 0.39 MILES

1975 ADT	= 975
1995 ADT	= 1,520
1995 DHV	= 215
D	= 56%
T	= 5%
V	= 40 MPH

Project RS 0297(4)
Pin # 132241
Route VT207
Date 1/1/1976

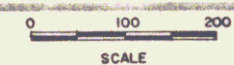


BEGIN PROJECT STA 5150
MP 1.601

END PROJECT STA 2610P
MP 1.991

CONVENTIONAL SIGNS

- COUNTY LINE
- TOWN LINE
- LIMITS OF ACCESS
- POINT OF ACCESS
- FENCE LINE
- STONE WALL
- TRAVELED WAY
- GUARD RAIL
- RAILROAD
- SURVEY LINE
- CULVERT
- POWER POLE
- TELEPHONE POLE
- TREES
- F.A. CONST IDENTIFICATION SIGNS
- PROPERTY LINE
- R.O.W. TAKING LINE
- SLOPE RIGHTS
- TOP OF CUT
- TOE OF SLOPE



Construction Limits
2+00 to 26+08

These plans are subject to such engineering changes as may be required by the Federal Highway Administration or the Chief Engineer.
Construction is to be carried on in accordance with these plans and the Standard Specifications for Highway and Bridge Construction dated January 3, 1972 as approved by the Federal Highway Administration on December 28, 1971 for use on this project, including all subsequent revisions and such revised specification and special provisions as are incorporated in these plans.

SUBMITTED BY ORDER OF THE STATE HIGHWAY BOARD

APPROVED _____ DATE _____
CHIEF ENGINEER

DEPARTMENT OF TRANSPORTATION
FEDERAL HIGHWAY ADMINISTRATION

APPROVED _____ DATE _____
DIVISION ENGINEER

PROJECT RS # 0297(4) SA

SHEET 1 OF SHEETS

D-10 SRS 12/17/70

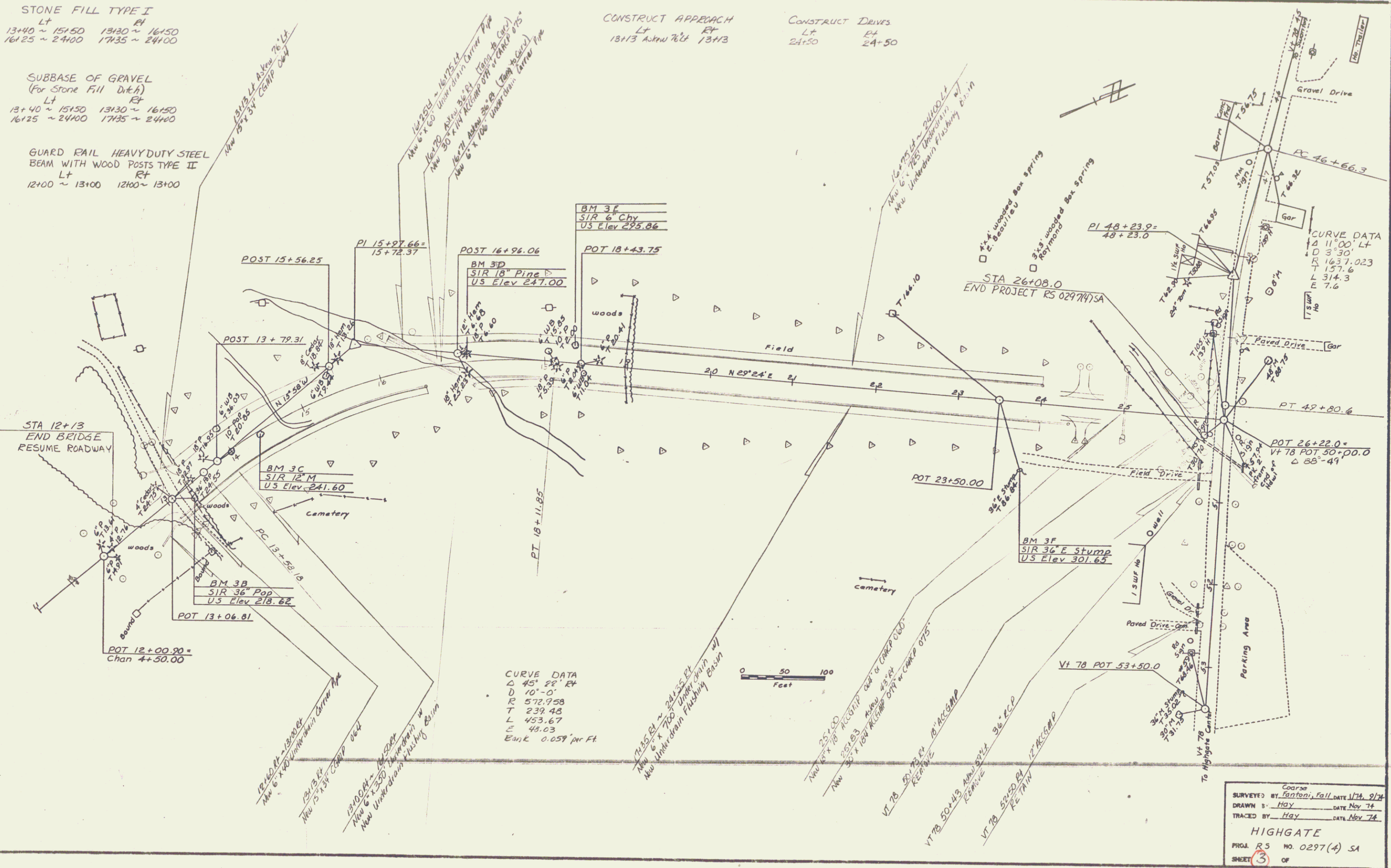
STONE FILL TYPE I
 LT RT
 13+40 ~ 15+50 13+30 ~ 16+50
 16+25 ~ 24+00 17+35 ~ 24+00

SUBBASE OF GRAVEL
 (For Stone Fill Ditch)
 LT RT
 13+40 ~ 15+50 13+30 ~ 16+50
 16+25 ~ 24+00 17+35 ~ 24+00

GUARD RAIL HEAVY DUTY STEEL
 BEAM WITH WOOD POSTS TYPE II
 LT RT
 12+00 ~ 13+00 12+00 ~ 13+00

CONSTRUCT APPROACH
 LT RT
 13+13 ASPHALT 13+13

CONSTRUCT DRIVES
 LT RT
 24+50 24+50



CURVE DATA
 Δ 11°00' LT
 D 3°30'
 R 1637.023
 T 157.6
 L 314.3
 E 7.6

CURVE DATA
 Δ 45° 52' RT
 D 10' - 0"
 R 572.958
 T 239.48
 L 453.67
 E 48.03
 Bank 0.05' per Ft

Cooper
 SURVEYED BY Cooper DATE 1/21, 9/74
 DRAWN BY Hay DATE Nov 74
 TRACED BY Hay DATE Nov 74
HIGHGATE
 PROJ. R5 NO. 0297(4) SA
 SHEET 3 OF 7
 D-7